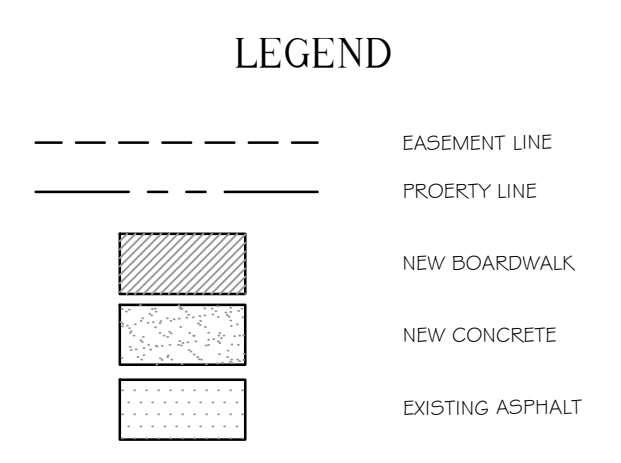
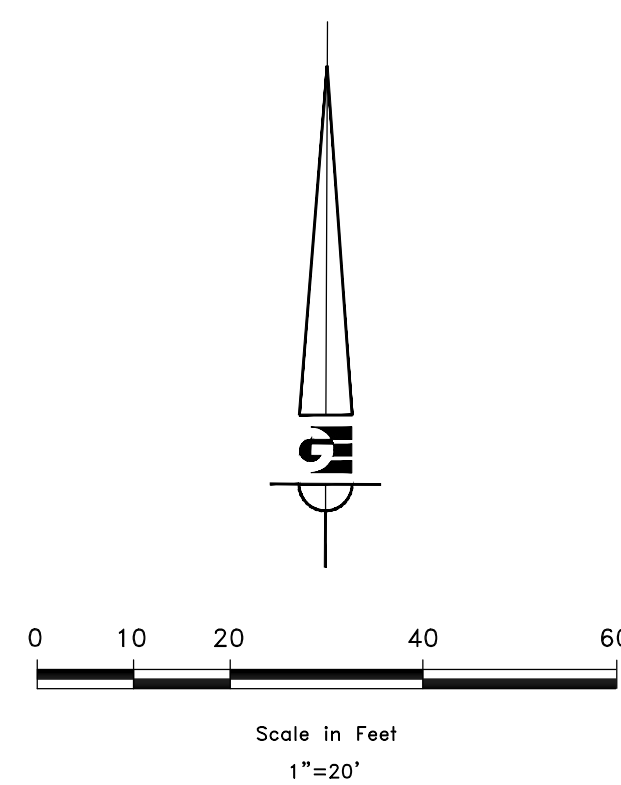
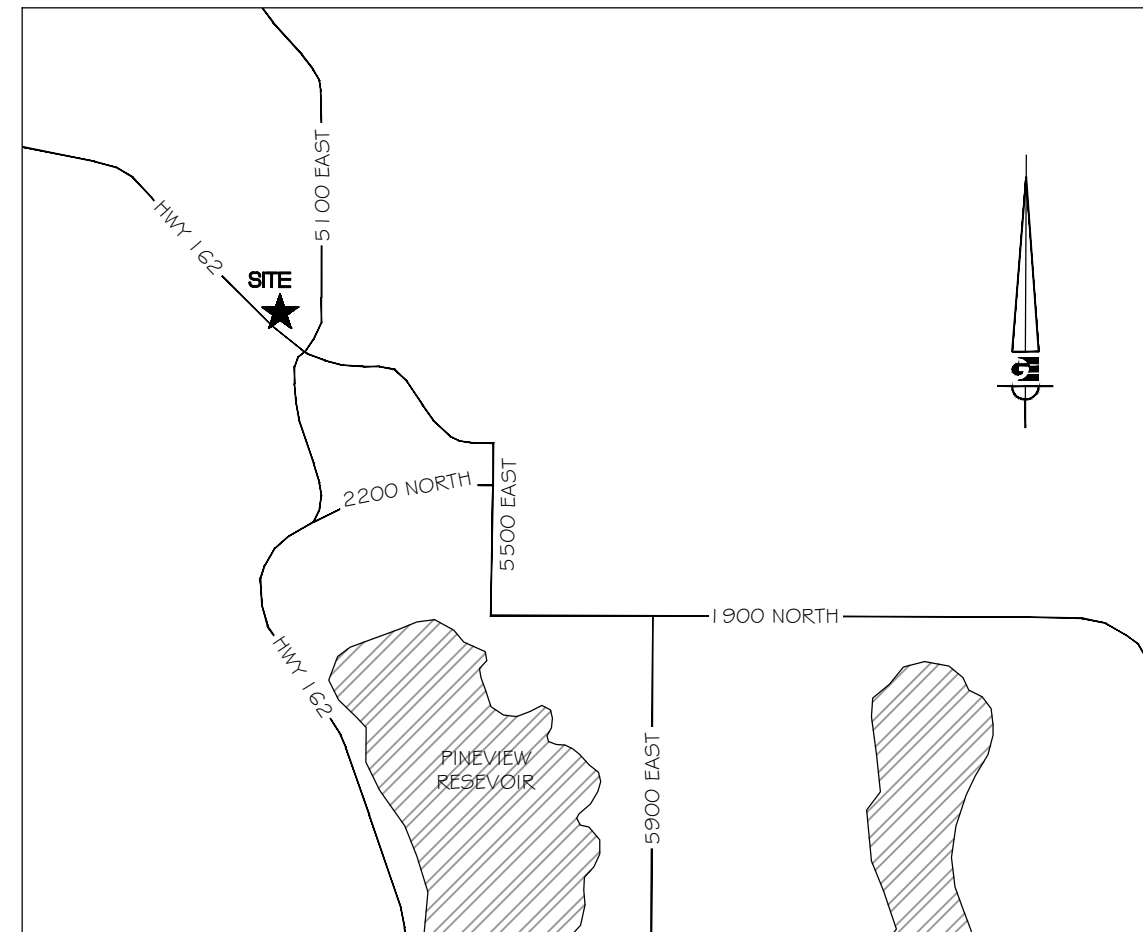
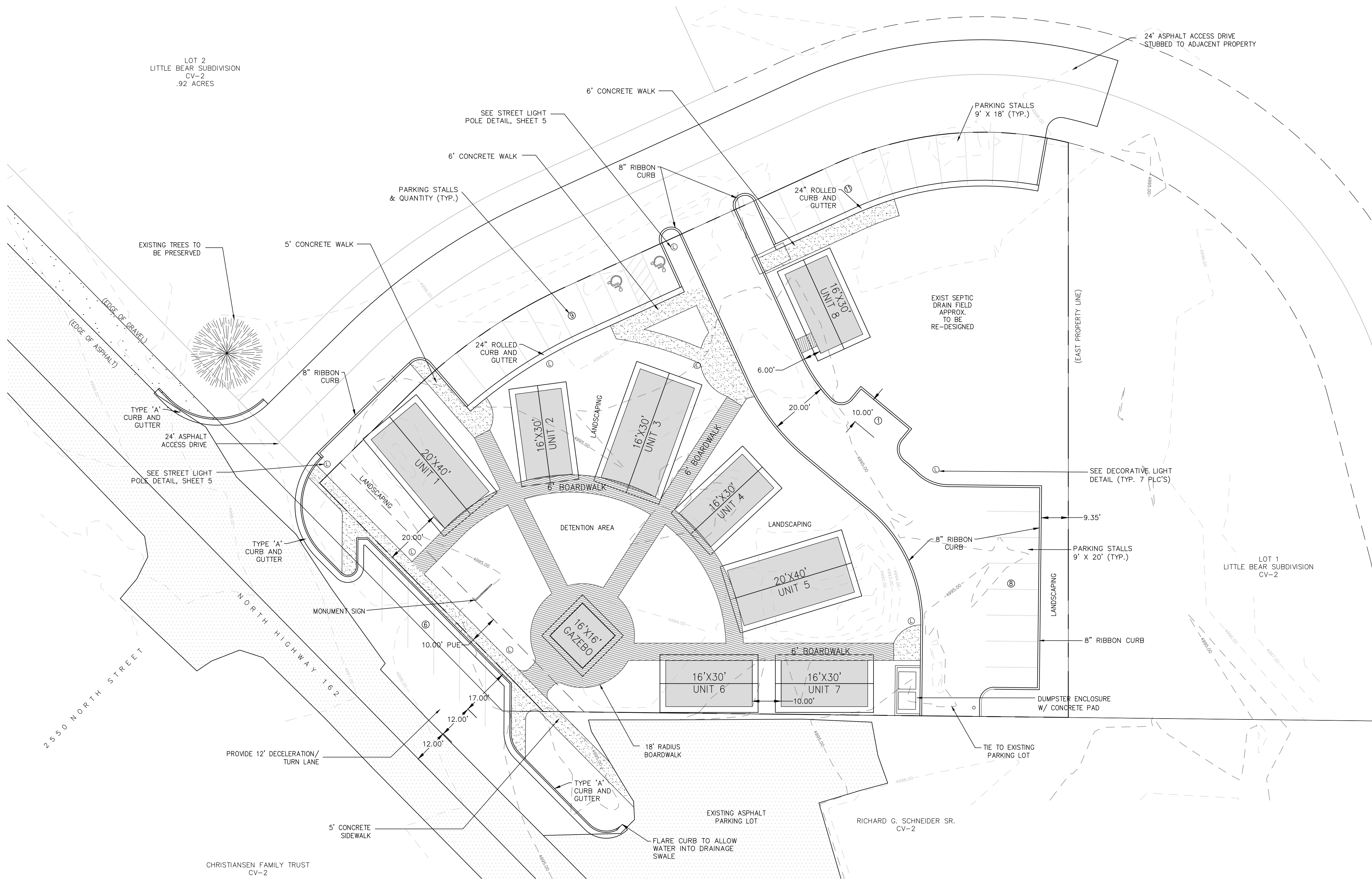


SITE PLAN  
EDEN CENTER

PART OF THE NORTHWEST QUARTER OF  
SECTION 34 T7N, R1E, SLB & M, U.S. SURVEY  
EDEN CITY, WEBER COUNTY, UTAH  
JUNE 2012



DEVELOPMENT DATA

PARCEL NUMBER	22-154-0003
EXISTING ZONING	CV-2
PARCEL ACREAGE	.89 ACRES
HARD SURFACE AREA	25,122 SF (47.5%)
BUILDING AREA	6,968 SF (13.2%)
LANDSCAPE AREA	20,831 SF (39.3%)
PROPOSED PARKING	35 STALLS

GENERAL NOTES

- ALL MATERIALS, WORKMANSHIP AND CONSTRUCTION OF SITE IMPROVEMENTS SHALL MEET OR EXCEED THE STANDARDS AND SPECIFICATIONS SET FORTH BY WEBER COUNTY ENGINEERING, PLANNING, CODES AND SPECIFICATIONS AND APPLICABLE STATE AND FEDERAL REGULATIONS. WHERE THERE IS CONFLICT BETWEEN THESE PLANS AND SPECIFICATIONS, OR ANY APPLICABLE STANDARDS, THE HIGHER QUALITY STANDARD SHALL APPLY.
  - THE CONTRACTOR IS SPECIFICALLY CAUTIONED THAT THE LOCATION AND OR ELEVATION OF EXISTING UTILITIES, AS SHOWN ON THESE PLANS IS BASED ON RECORDS OF THE VARIOUS UTILITY COMPANIES AND WHERE POSSIBLE, MEASUREMENTS TAKEN IN THE FIELD. THE INFORMATION IS NOT TO BE RELIED UPON AS BEING EXACT OR COMPLETE. THE CONTRACTOR MUST CALL THE LOCAL UTILITY LOCATION CENTER AT LEAST 48 HOURS BEFORE ANY EXCAVATION TO REQUEST EXACT FIELD LOCATIONS OF THE UTILITIES. PRIOR TO CONSTRUCTION, THE CONTRACTOR SHALL VERIFY PERTINENT LOCATIONS AND ELEVATIONS, ESPECIALLY AT THE CONNECTION POINTS AND AT POTENTIAL UTILITY CONFLICTS. IT SHALL BE THE RESPONSIBILITY OF THE CONTRACTOR TO RELOCATE ALL EXISTING UTILITIES THAT CONFLICT WITH THE PROPOSED IMPROVEMENTS SHOWN ON THESE PLANS.
  - THE CONTRACTOR SHALL COORDINATE AND COOPERATE WITH WEBER COUNTY AND ALL UTILITY COMPANIES INVOLVED WITH REGARD TO RELOCATIONS OR ADJUSTMENTS OF EXISTING UTILITIES DURING CONSTRUCTION AND TO ASSURE THAT THE WORK IS ACCOMPLISHED IN A TIMELY FASHION AND WITH A MINIMUM DISRUPTION OF SERVICE.
  - THE CONTRACTOR SHALL HAVE ONE (1) COPY OF APPROVED PLANS, AND ONE (1) COPY OF THE APPROPRIATE STANDARDS AND SPECIFICATIONS AND A COPY OF ANY PERMITS AND EXTENSION AGREEMENTS NEEDED FOR THE JOB, ON SITE AT ALL TIMES.
  - THE CONTRACTOR SHALL BE RESPONSIBLE FOR ALL ASPECTS OF SAFETY INCLUDING BUT NOT LIMITED TO, EXCAVATION, TRENCHING, SHORING, TRAFFIC CONTROL, AND SECURITY.
  - IF DURING THE CONSTRUCTION PROCESS CONDITIONS ARE ENCOUNTERED BY THE CONTRACTOR, HIS SUBCONTRACTORS, OR OTHER AFFECTED PARTIES, WHICH COULD INDICATE A SITUATION THAT IS NOT IDENTIFIED IN THE PLANS OR SPECIFICATIONS, THE CONTRACTOR SHALL CONTACT THE ENGINEER IMMEDIATELY.
  - THE CONTRACTOR IS RESPONSIBLE FOR PROVIDING ALL LABOR AND MATERIALS NECESSARY FOR THE COMPLETION OF THE INTENDED IMPROVEMENTS SHOWN ON THESE DRAWINGS OR DESIGNATED TO BE PROVIDED, INSTALLED, CONSTRUCTED, REMOVED AND RELOCATED UNLESS SPECIFICALLY NOTED OTHERWISE.
  - THE CONTRACTOR SHALL BE RESPONSIBLE FOR KEEPING ROADWAYS FREE AND CLEAR OF ALL CONSTRUCTION DEBRIS AND DIRT TRACKED FROM THE SITE.
  - THE CONTRACTOR SHALL BE RESPONSIBLE FOR RECORDING AS-BUILT DRAWINGS ON A SET OF RECORD DRAWINGS KEPT AT THE CONSTRUCTION SITE, AND AVAILABLE TO THE WEBER COUNTY INSPECTOR AT ALL TIMES.
  - THE CONTRACTOR SHALL SEQUENCE INSTALLATION OF UTILITIES IN SUCH A MANNER AS TO MINIMIZE POTENTIAL UTILITY CONFLICTS. IN GENERAL, STORM SEWER AND SANITARY SEWER SHOULD BE CONSTRUCTED PRIOR TO INSTALLATION OF WATER LINES AND DRY UTILITIES.
  - IT SHALL BE THE RESPONSIBILITY OF THE CONTRACTOR TO COORDINATE ALL UTILITY RELOCATIONS CONSISTENT WITH THE CONTRACTORS SCHEDULE FOR THIS PROJECT, WHETHER SHOWN OR NOT SHOWN AS IT RELATES TO THE CONSTRUCTION ACTIVITIES CONTEMPLATED IN THESE PLANS.
- NOTE: ALL CONSTRUCTION TO CONFORM TO WEBER COUNTY STANDARDS AND SPECIFICATIONS.

NOTICE:  
EXISTING UTILITIES ARE SHOWN ON PLANS FOR THE CONVENIENCE OF THE CONTRACTOR ONLY. THE CONTRACTOR IS RESPONSIBLE FOR THE PROTECTION OF ALL UTILITIES. THE ENGINEER BEARS NO RESPONSIBILITY FOR THE UTILITIES NOT SHOWN OR SHOWN INCORRECTLY.

Call BLUE STAKES BEFORE YOU Dig  
1-800-662-4111  
UNDERGROUND SERVICE CORP.

DEVELOPER  
WOP WOM, LLC.  
ERIC SMITH  
212 MERCHANT ST. #330  
HONOLULU, HI 96813  
PHONE: (808) 524-3551  
FAX: (808) 524-8803

SCALE: 1" = 20'	DATE: AUGUST 2012	DESIGN: TMN/SCC	DRAWN: SCC	CHECKED: TMN
REVISIONS	DATE	DESCRIPTION	DWG. SEE PLOT STAMP AT LEFT	

REGISTERED PROFESSIONAL ENGINEER  
No. 4859845  
TYLER M. NIELSON  
STATE OF UTAH

WOP WOM LLC  
EDEN CENTER  
SITE PLAN  
EDEN CITY, WEBER COUNTY, UTAH

Gardner Engineering  
PLANNING  
ENGINEERING  
LAND SURVEYING  
ALTERNATIVE ENERGY

5875 South Adams Ave. Parkway, Suite 200 • Ogden, UT 84405  
• Phone (801) 476 0202 • Fax (801) 476-0066



Eden Center  
Eden, Weber County, Utah

Lat= 41.3061 Long=-111.8281

Areas	Sq Ft	Area	C
Hard Surface	25,122	0.5767	0.85
Building	6,968	0.1600	0.90
Landscape	20,831	0.4782	0.10

Total/Weighted 52,921 1.2149 0.56



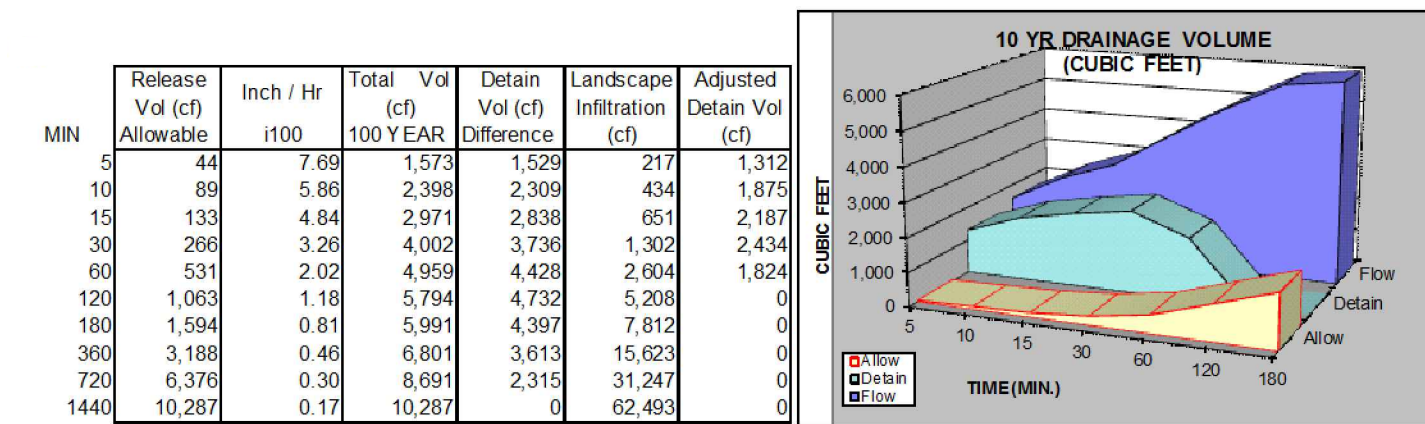
## GRADING & DRAINAGE PLAN

# EDEN CENTER

PART OF THE NORTHWEST QUARTER OF  
SECTION 34 T7N, R1E, SLB & M, U.S. SURVEY

EDEN CITY, WEBER COUNTY, UTAH

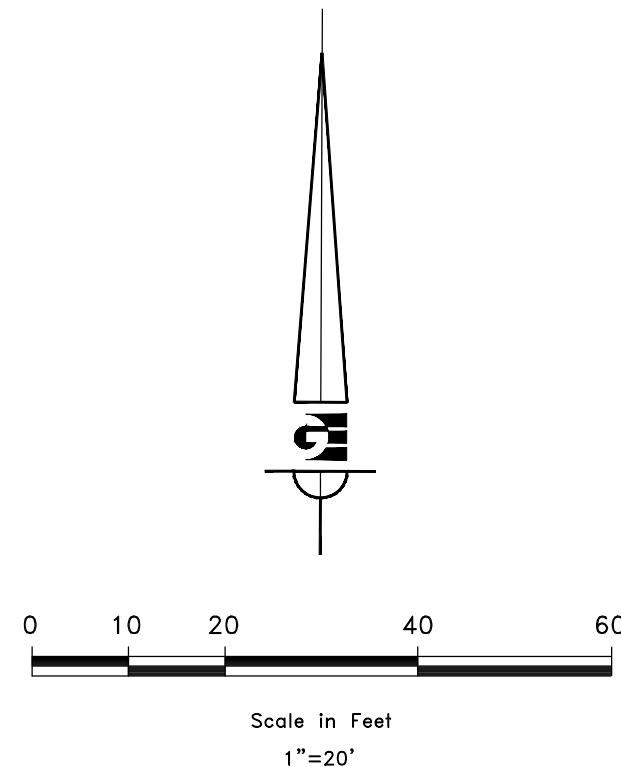
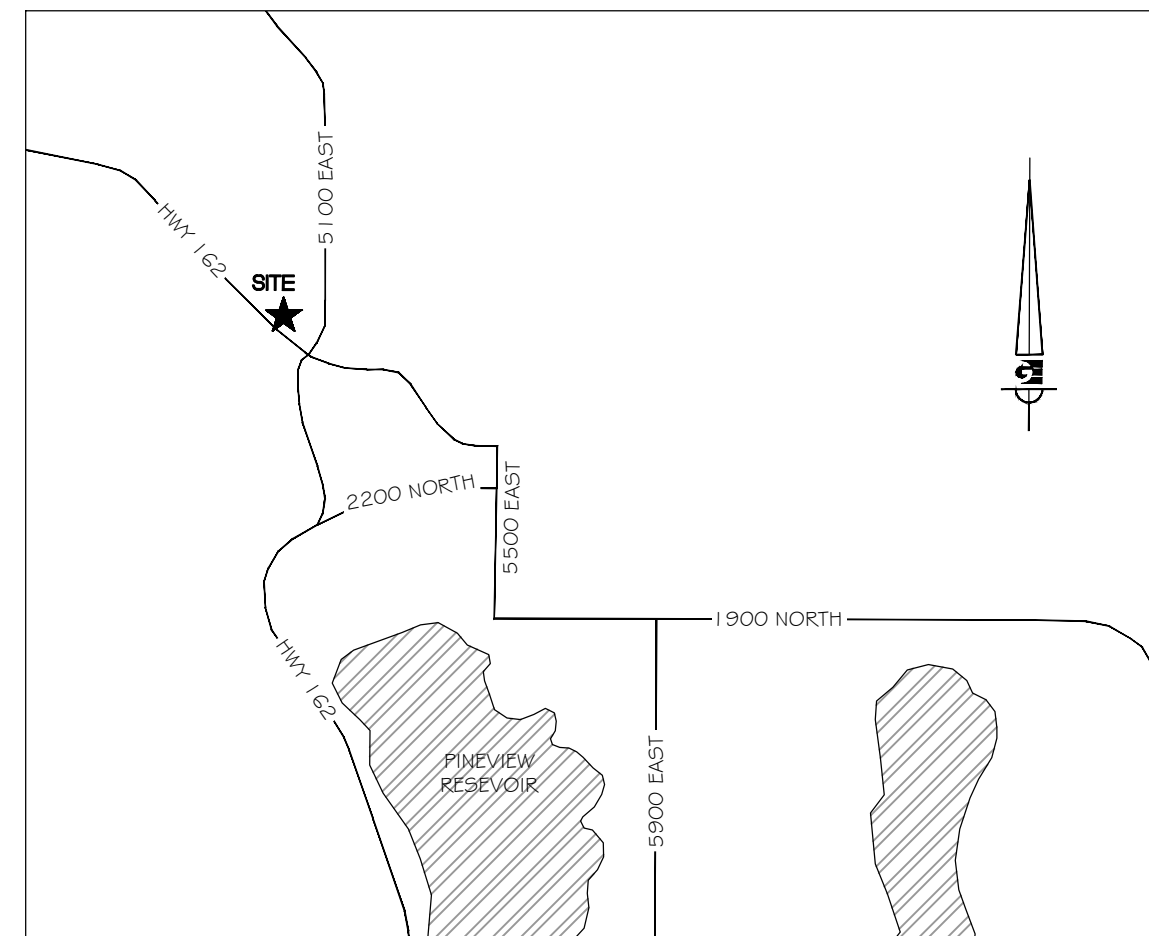
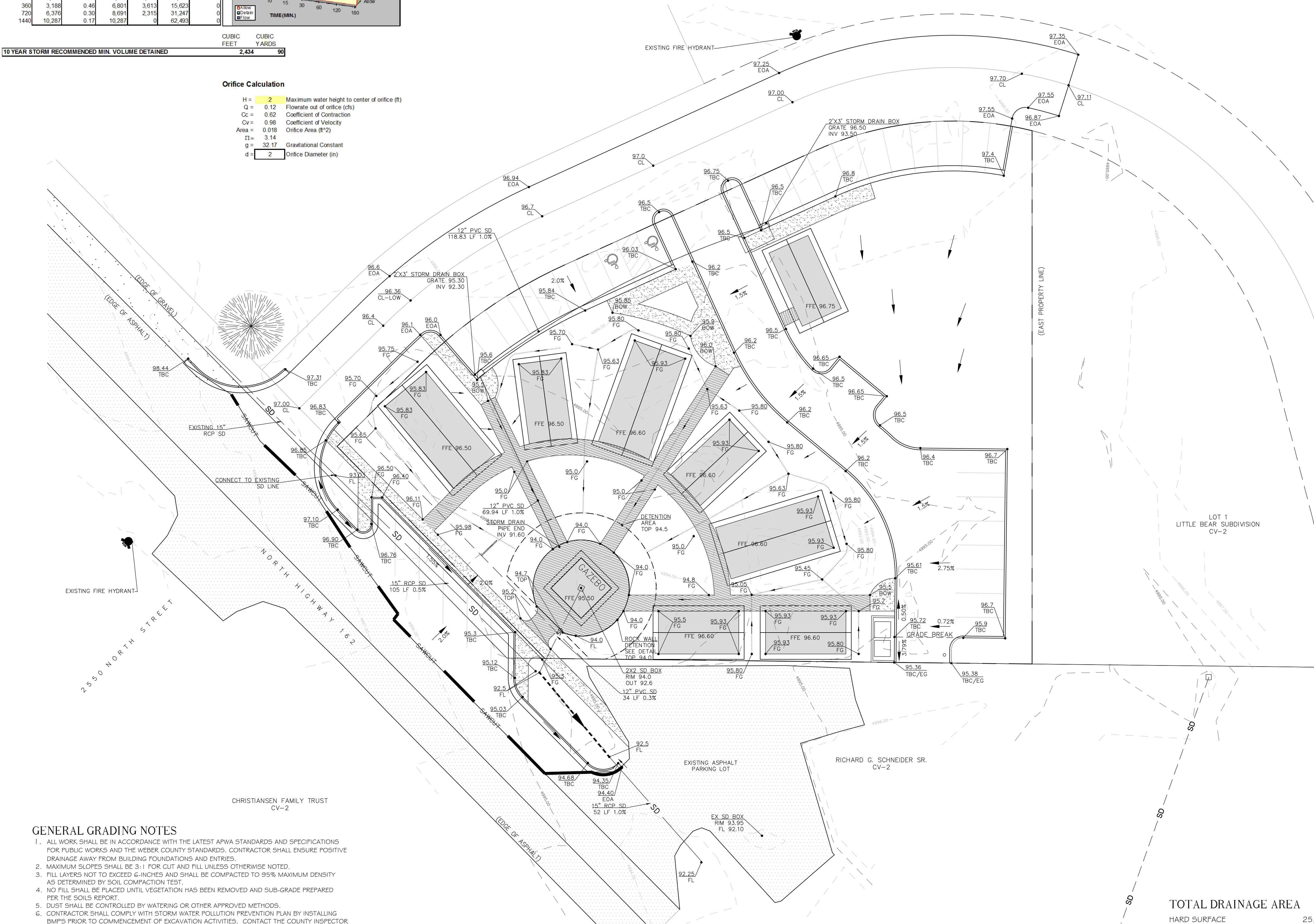
JUNE 2012



10 YEAR STORM RECOMMENDED MIN. VOLUME DETAINED  
CUBIC FEET 2,434  
YARDS 90

### Orifice Calculation

H = 2 Maximum water height to center of orifice (ft)  
Q = 0.12 Flowrate out of orifice (cfs)  
Cc = 0.62 Coefficient of Contraction  
Cv = 0.98 Coefficient of Velocity  
Area = 0.018 Orifice Area (ft<sup>2</sup>)  
TI = 3.14 Gravitational Constant  
g = 32.17  
d = 2 Orifice Diameter (in)



### LEGEND

---	EASEMENT LINE
---	PROPERTY LINE
SD	PROPOSED STORM DRAIN
SD	EXISTING STORM DRAIN
---	DRAINAGE DIRECTION
---	DRAINAGE SWALE
---	STORAGE SWALE
TBC	TOP BACK OF CURB
EG	EXISTING GROUND
FG	FINISH GROUND
BOW	BACK OF WALK
EOA	EDGE OF ASPHALT
FL	FLOW LINE
CL	CENTERLINE

### GENERAL GRADING NOTES

- ALL WORK SHALL BE IN ACCORDANCE WITH THE LATEST APWA STANDARDS AND SPECIFICATIONS FOR PUBLIC WORKS AND THE WEBER COUNTY STANDARDS. CONTRACTOR SHALL ENSURE POSITIVE DRAINAGE AWAY FROM BUILDING FOUNDATIONS AND ENTRIES.
- MAXIMUM SLOPES SHALL BE 3:1 FOR CUT AND FILL UNLESS OTHERWISE NOTED.
- FILL LAYERS NOT TO EXCEED 6-INCHES AND SHALL BE COMPACTED TO 95% MAXIMUM DENSITY AS DETERMINED BY SOIL COMPACTION TEST.
- NO FILL SHALL BE PLACED UNTIL VEGETATION HAS BEEN REMOVED AND SUB-GRADE PREPARED PER THE SOILS REPORT.
- DUST SHALL BE CONTROLLED BY WATERING OR OTHER APPROVED METHODS.
- CONTRACTOR SHALL COMPLY WITH STORM WATER POLLUTION PREVENTION PLAN BY INSTALLING BMPs PRIOR TO COMMENCEMENT OF EXCAVATION ACTIVITIES. CONTACT THE COUNTY INSPECTOR FOR INSPECTION.
- ALL RECOMMENDATIONS OF THE GEOTECHNICAL REPORT AND ALL SUBSEQUENT REPORTS, ADDENDUM ETC. SHALL BE CONSIDERED A PART OF THIS GRADING PLAN AND SHALL BE COMPLIED WITH.
- THE CONTRACTOR SHALL CONTACT BLUE STAKES FOR LOCATION MARKING PRIOR TO COMMENCING EXCAVATION ACTIVITIES.
- WEBER COUNTY MAY REQUIRE A PRE-CONSTRUCTION MEETING BEFORE A PERMIT IS ISSUED.
- STREETS ADJACENT TO THE PROJECT SHALL BE CLEAN AT ALL TIMES.
- CONTRACTOR IS RESPONSIBLE FOR ARRANGING FOR ALL REQUIRED INSPECTIONS.
- PRIOR TO TAKING WATER FROM A FIRE HYDRANT, THE CONTRACTOR SHALL MAKE ARRANGEMENTS WITH WATER UTILITY TO OBTAIN A WATER METER.
- ELEVATIONS SHOWN ON BUILDINGS ARE FINISHED FLOOR LOWEST LEVEL.
- SAWCUT 12" OFF OF EXISTING ASPHALT PRIOR TO NEW INSTALLING NEW PAVEMENT.

NOTE: ALL CONSTRUCTION TO CONFORM TO WEBER COUNTY STANDARDS AND SPECIFICATIONS.

### TOTAL DRAINAGE AREA

HARD SURFACE 25,122 SF  
BUILDING 6,968 SF  
LANDSCAPE 20,831 SF

RELEASE RATE 0.10 CFS/ACRE  
INFILTRATION RATE 1.51 CFS/ACRE  
REQUIRED DETENTION 2,434 CF  
CAPACITY 3,729 CF

NOTICE:  
EXISTING UTILITIES ARE SHOWN ON PLANS FOR THE CONVENIENCE OF THE CONTRACTOR. THE CONTRACTOR IS RESPONSIBLE FOR THE PROTECTION OF ALL UTILITIES. THE ENGINEER BEARS NO RESPONSIBILITY FOR THE UTILITIES NOT SHOWN OR SHOWN INCORRECTLY.

Call BLUE STAKES BEFORE YOU Dig

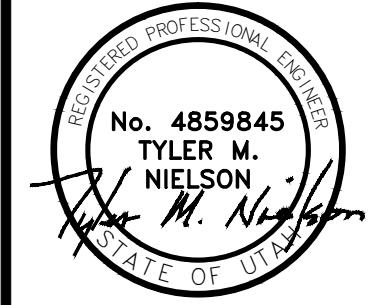
1-800-662-4111  
UNDERGROUND SERVICE CORP.

### DEVELOPER

WOP WOM, LLC.  
ERIC SMITH  
212 MERCHANT ST. #330  
HONOLULU, HI 96813  
PHONE: (808) 524-3551  
FAX: (808) 524-8803

REVISIONS	DESCRIPTION
DATE	

DATE	DESCRIPTION



WOP WOM LLC  
EDEN CENTER  
GRADING PLAN  
EDEN CITY, WEBER COUNTY, UTAH

Gardner Engineering  
PLANNING  
CIVIL ENGINEERING  
LAND SURVEYING  
ALTERNATIVE ENERGY

5875 South Adams Ave. Parkway, Suite 200 • Ogden, UT 84405  
• Phone (801) 476 0202 • Fax (801) 476-0066

2

5



REVISIONS	
DATE	DESCRIPTION

SCALE: 1" = 20'
DATE: DECEMBER 2011
DESIGN: EL
DRAWN: EL
CHECKED:

DWG:
------

WOP WOM LLC
EDEN CENTER LANDSCAPE PLAN
EDEN CITY, WEBER COUNTY, UTAH

$$\frac{3}{5}$$

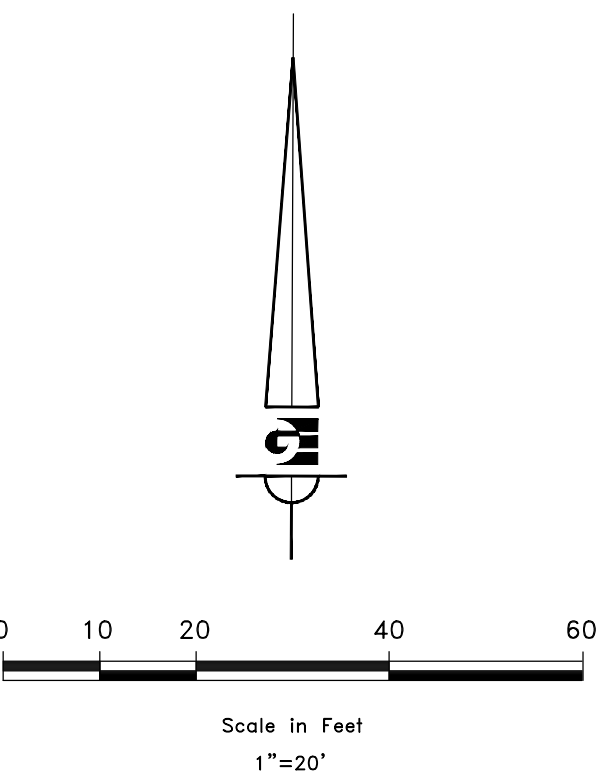
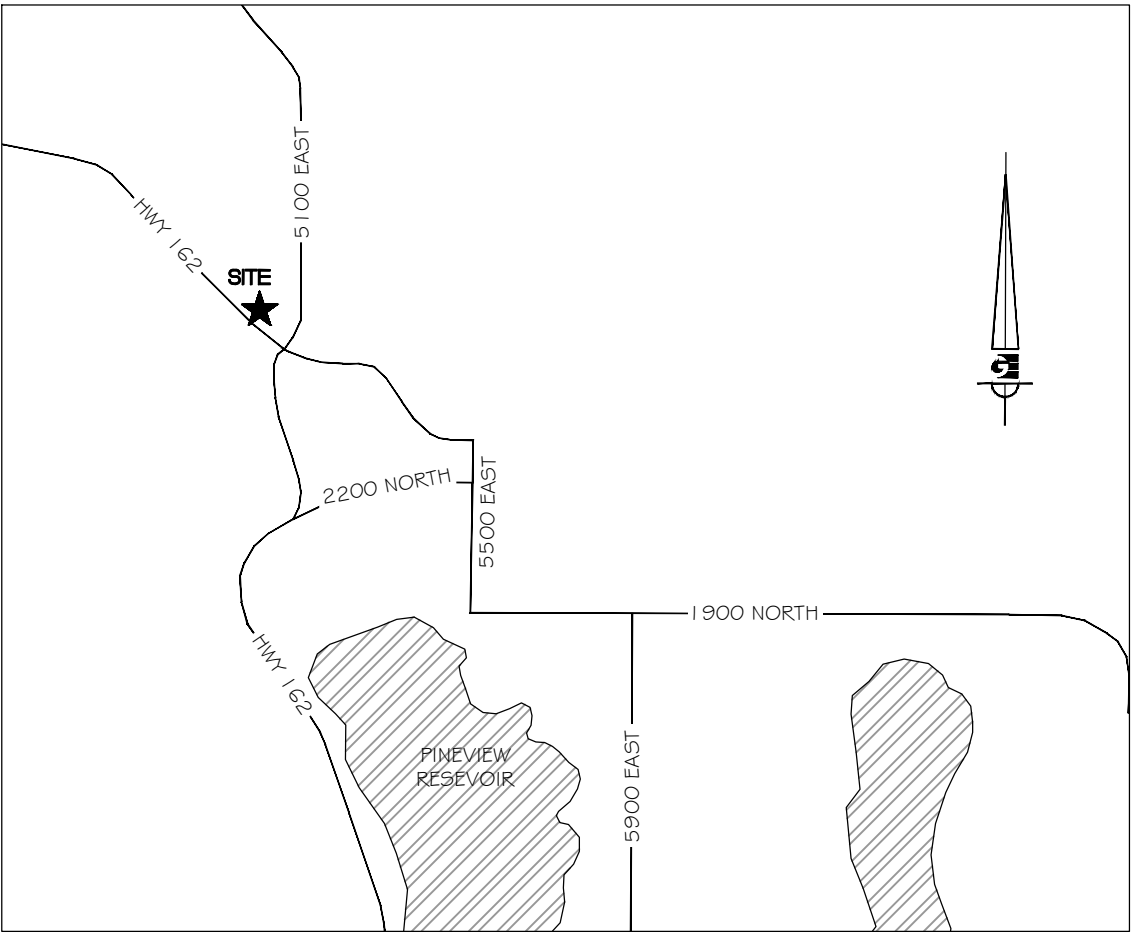
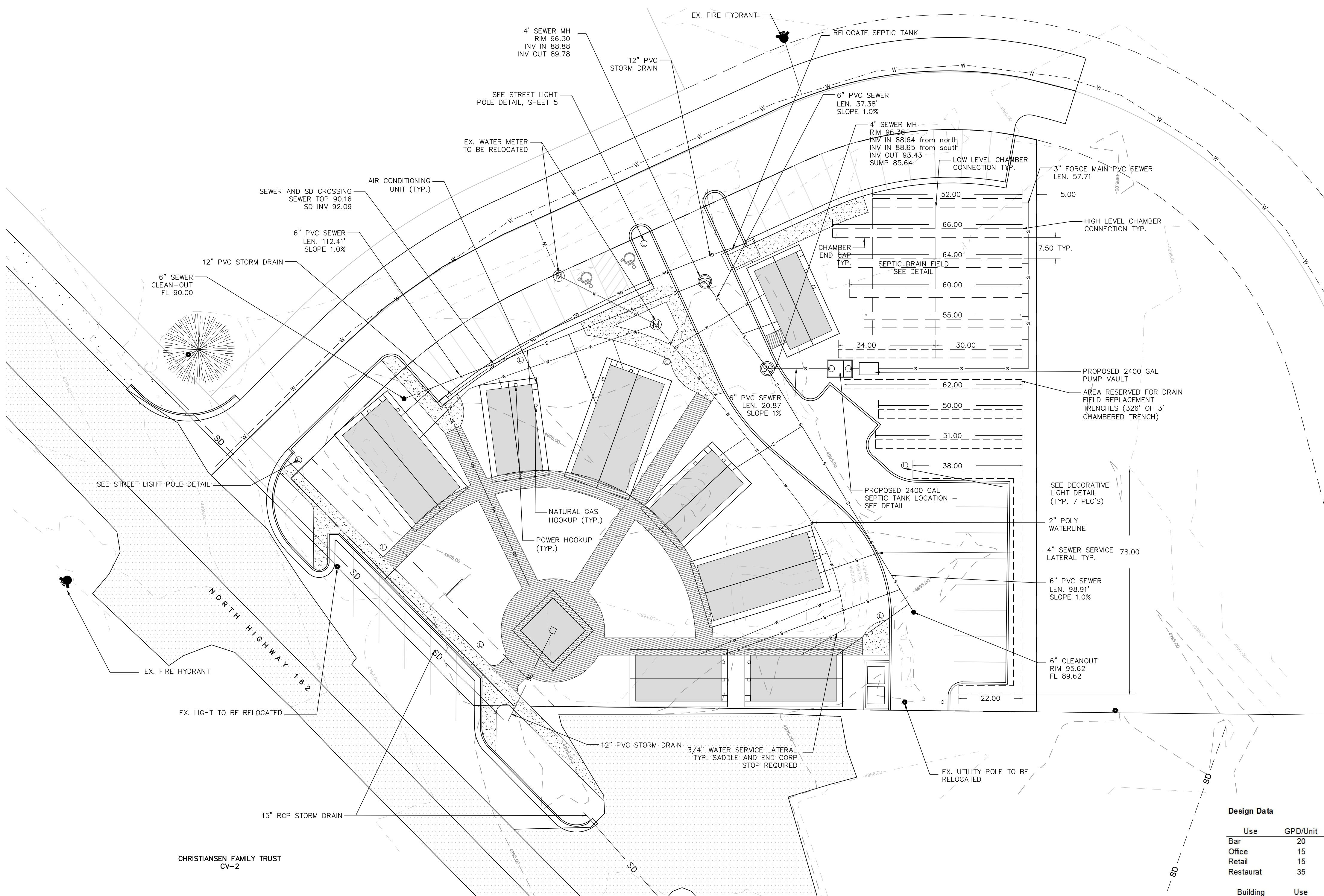

SCALE: 1"=20'

LANDSCAPE DATA	
TOTAL PROJECT AREA	.89 ACRES – 38,768 SF
LANDSCAPE AREA	22,123 SF – 57.0%
TURF GRASS AREA*	3,915 SF – 10.1%
* Excludes turf outside of parcel boundary replaced or added to blend to adjacent parcels	



UTILITY PLAN  
EDEN CENTER

PART OF THE NORTHWEST QUARTER OF  
SECTION 34 T7N, R1E, SLB & M, U.S. SURVEY  
EDEN CITY, WEBER COUNTY, UTAH  
JUNE 2012



LEGEND

---	EASEMENT LINE
---	PROPERTY LINE
---	EXISTING WATERLINE
---	PROPOSED WATERLINE
---	EXISTING SEWER
---	PROPOSED SEWER
---	PROPOSED STORM DRAIN
---	FIRE HYDRANT
---	EXISTING UTILITY POLE
---	WATER METER
---	SEWER MANHOLE
---	PROPOSED LIGHT POLE
---	EXISTING ASPHALT

Design Data

Use	GPD/Unit	Units	
Bar	20	per seat	
Office	15	per employee	
Retail	15	per employee	
Restaurant	35	per seat	

Building	Use	Units	GPD
1	Bar	20	400
2	Retail	2	30
3	Office	6	90
4	Retail	2	30
5	Office	5	75
6	Retail	2	30
7	Retail	2	30
8	Food To Go	12	420
Total			1105

Obsorption Rate (40 MP)	0.8 GPD/SF
Gravel Obsorption Area Required	1381 SF
Gravel Trench Required	460.4 LF
Chambered Trench Required	322.3 LF
Planned Chambered Trench Length	326 LF

NOTICE:

EXISTING UTILITIES ARE SHOWN ON PLANS FOR THE CONVENIENCE OF THE CONTRACTOR ONLY. THE CONTRACTOR IS RESPONSIBLE FOR THE PROTECTION OF ALL UTILITIES. THE ENGINEER BEARS NO RESPONSIBILITY FOR THE UTILITIES NOT SHOWN OR SHOWN INCORRECTLY.

Call BLUE STAKES BEFORE YOU Dig

1-800-662-4111

DEVELOPER

WOP WOM, LLC.  
ERIC SMITH  
212 MERCHANT ST. #330  
HONOLULU, HI 96813  
PHONE: (808) 524-3551  
FAX: (808) 524-8803

CULINARY WATER NOTES

- ALL INSTALLATION AND MATERIALS SHALL CONFORM TO WEBER COUNTY STANDARDS AND SPECIFICATIONS AND PLANS.
- DISINFECTION TESTS SHALL BE PERFORMED WITH COOPERATION FROM THE CONTRACTOR IN PERFORMING ANY NECESSARY EXCAVATION AND SUBSEQUENT BACKFILLING.
- UNLESS OTHERWISE SPECIFIED, ALL WATERLINES SHALL BE AWWA C900 PVC CLASS 150, PER ASTM D2241.
- CONTRACTOR SHALL LOCATE VALVES PRIOR TO CONNECTION WITH EXISTING SYSTEM, BUT SHALL NOT OPERATE ANY VALVE WITHOUT PERMISSION.
- ALL WATER MAINS, VALVES, FIRE HYDRANTS, SERVICES AND APPURTENANCES SHALL BE INSTALLED, TESTED, AND APPROVED PRIOR TO PAVING.

SANITARY SEWER NOTES

- THE LOCATION OF EXISTING UTILITIES SHOWN ARE APPROXIMATE ONLY, AND THE CONTRACTOR SHALL VERIFY THE LOCATION AND ELEVATION OF ALL UTILITIES SHOWN OR NOT SHOWN ON THESE PLANS.
- ALL UTILITY CONSTRUCTION SHALL BE IN CONFORMANCE WITH WEBER COUNTY STANDARDS AND SPECIFICATIONS.
- ALL GRAVITY SANITARY SEWER LINES SHALL BE SDR-35 PVC MATERIAL. SEWER LINE CONSTRUCTION AND MATERIALS SHALL CONFORM TO ASTM STANDARDS AND SPECIFICATIONS.
- CONTRACTOR IS RESPONSIBLE TO PROTECT ALL EXISTING STRUCTURES AND IMPROVEMENTS DURING INSTALLATION OF SANITARY SEWER LINE.

SEPTIC NOTES

- MAINTAIN 5' MIN OF EARTH BETWEEN TRENCH AND PROPERTY LINES
- MAINTAIN 5' MIN OF UNDISTURBED EARTH BETWEEN SEPTIC TANK AND BUILDING FOUNDATION.
- MAINTAIN 100' SEPARATION BETWEEN ANY TRENCH, AND DITCH, OR WATER WELL.
- THESE PLANS ARE INTENDED TO SATISFY STATE AND COUNTY REQUIREMENTS FOR ONSITE WASTEWATER SYSTEM APPROVAL. ADDITIONAL CIVIL DESIGN OR CONTRACTOR SERVICES MAY BE REQUIRED.

NOTE: ALL CONSTRUCTION TO CONFORM TO WEBER COUNTY STANDARDS AND SPECIFICATIONS.

SCALE: 1" = 20'

DATE: AUGUST 2012

DESIGN: TMN/SCC

DRAWN: SCC

CHECKED: TMN

REVISIONS

DATE	DESCRIPTION

Professional Engineer Seal

No. 4859845

TYLER M. NIELSON

STATE OF UTAH

WOP WOM LLC

EDEN CENTER

UTILITY PLAN

EDEN CITY, WEBER COUNTY, UTAH

Gardner Engineering

PLANNING

CIVIL ENGINEERING

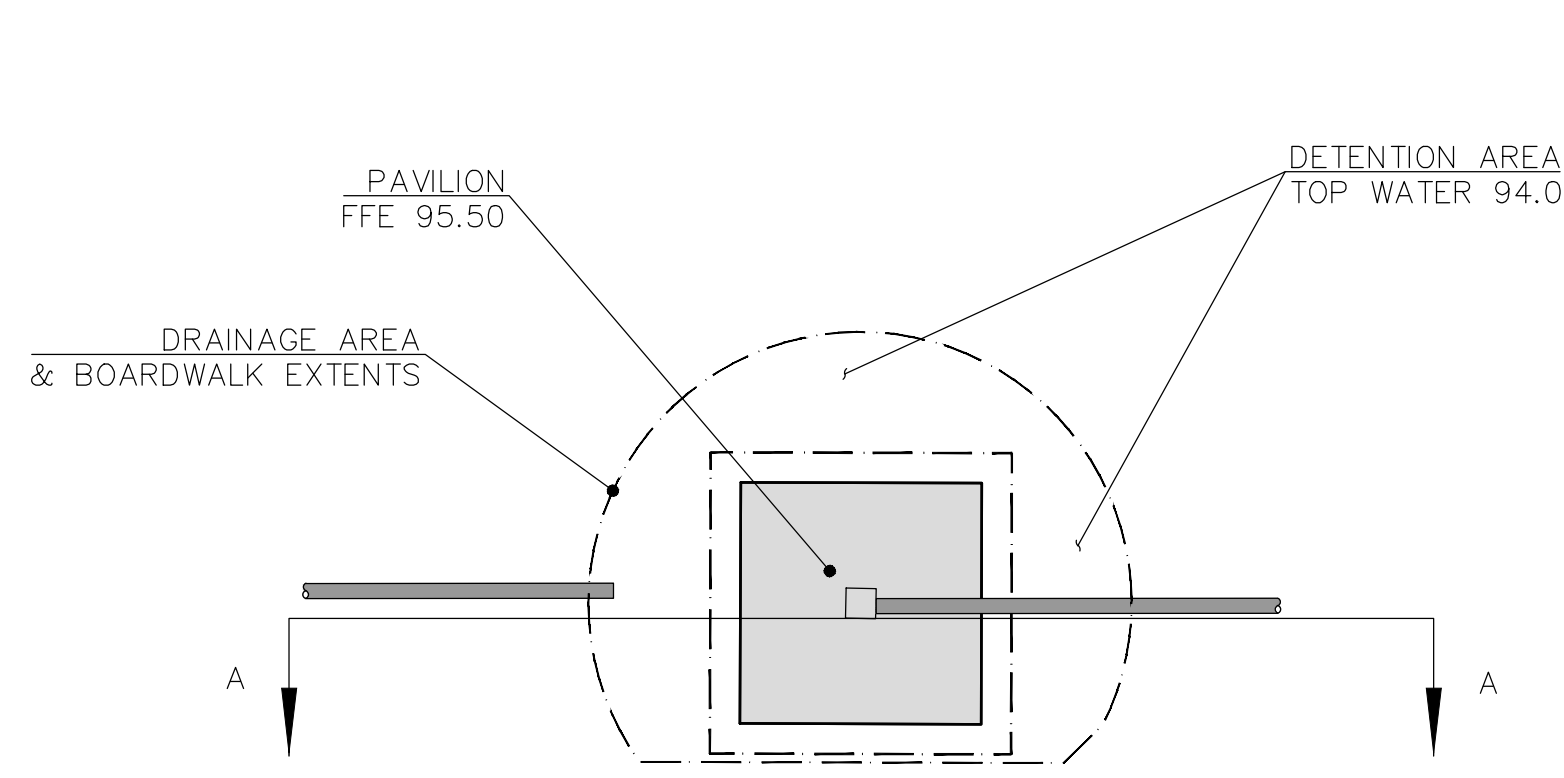
LAND SURVEYING

ALTERNATIVE ENERGY

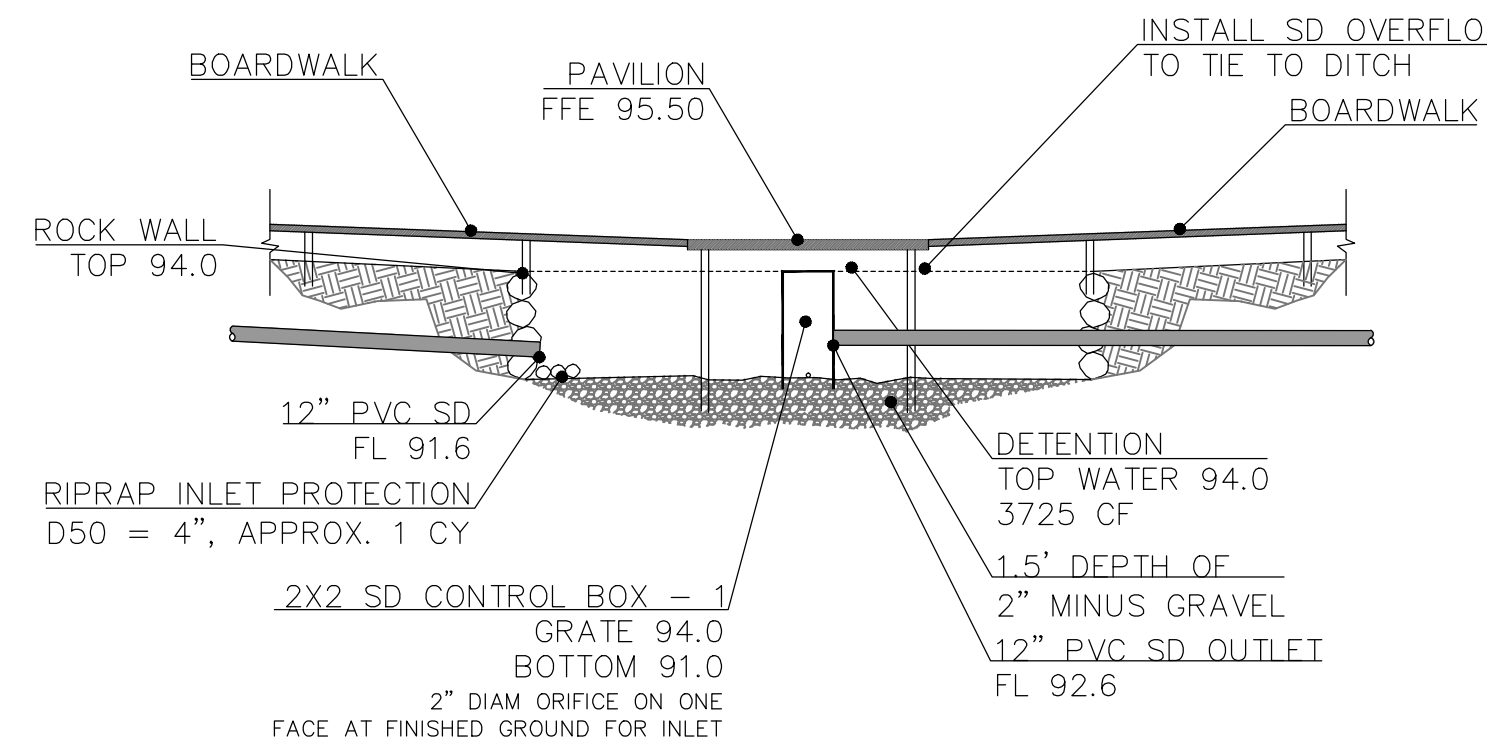
5875 South Adams Ave. Parkway, Suite 200 • Ogden, UT 84405

• Phone (801) 476 0202 • Fax (801) 476-0066

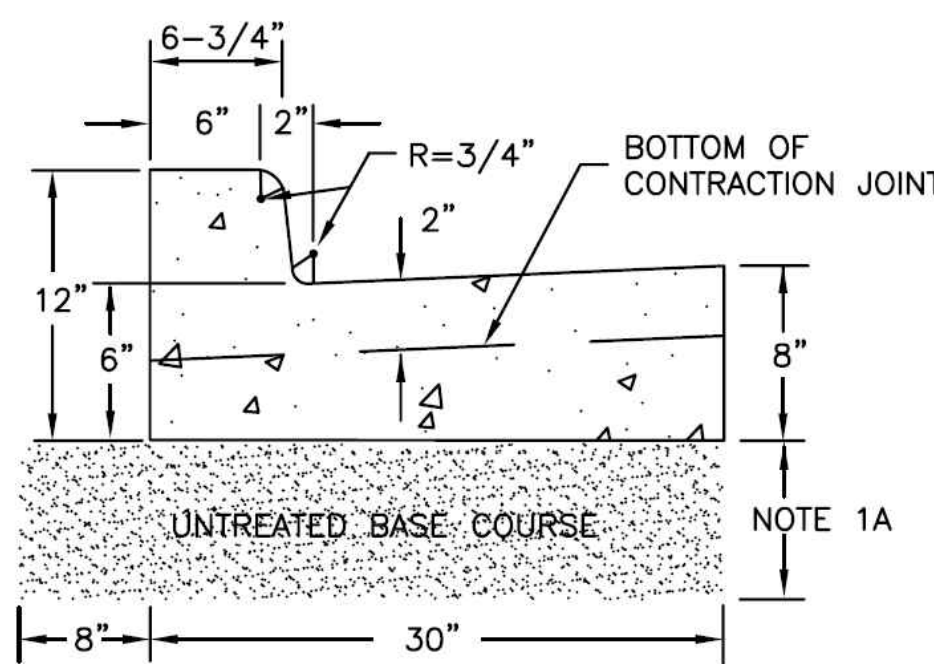




PLAN

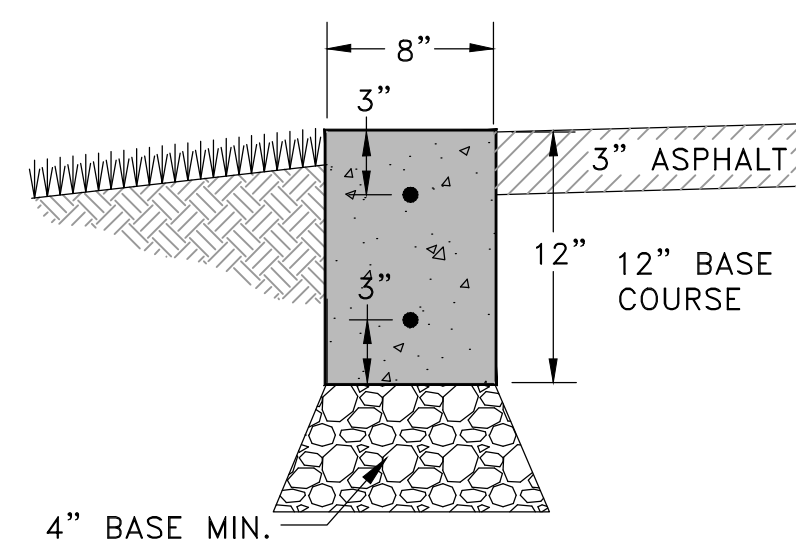


SECTION A-A  
AREA 1 - DETENTION

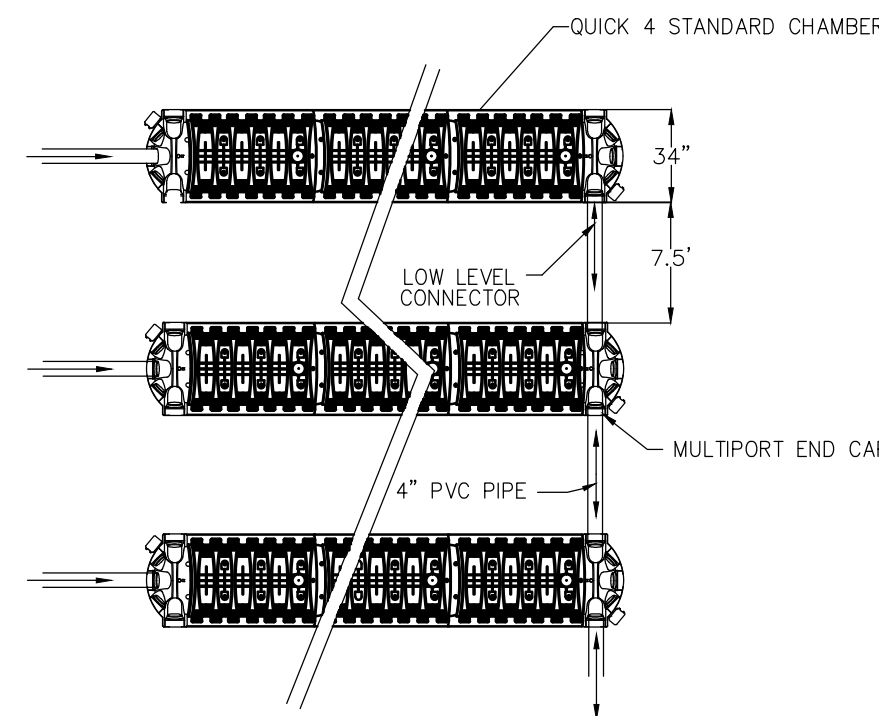
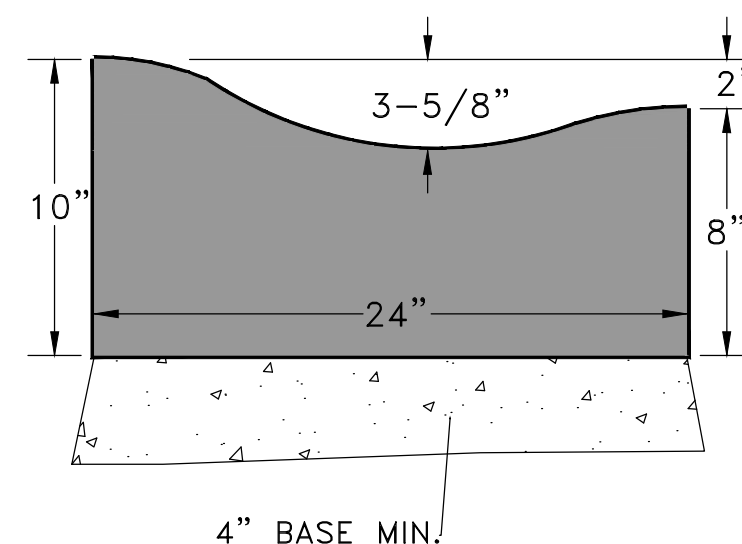


CONCRETE AREA = 1.665 SQ. FT.

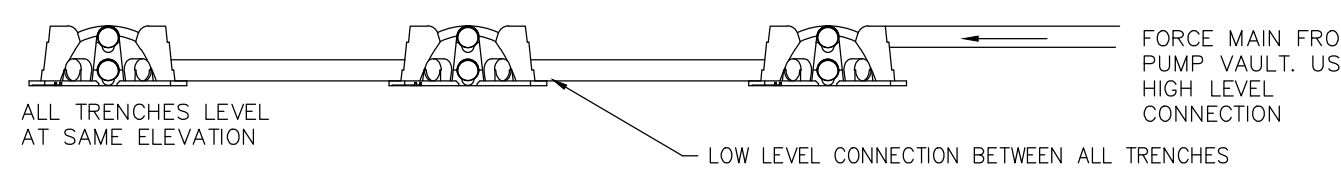
TYPE A CURB AND GUTTER



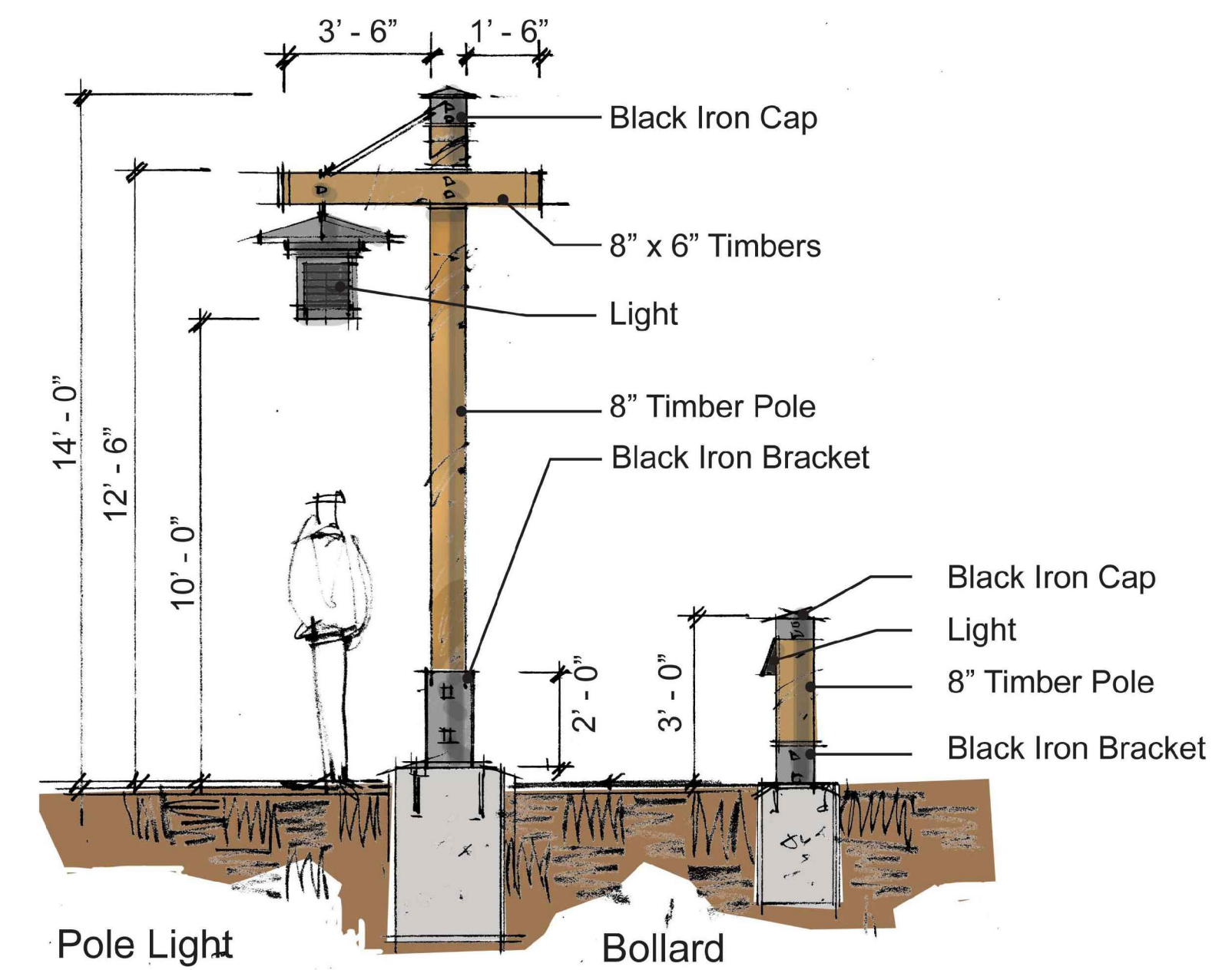
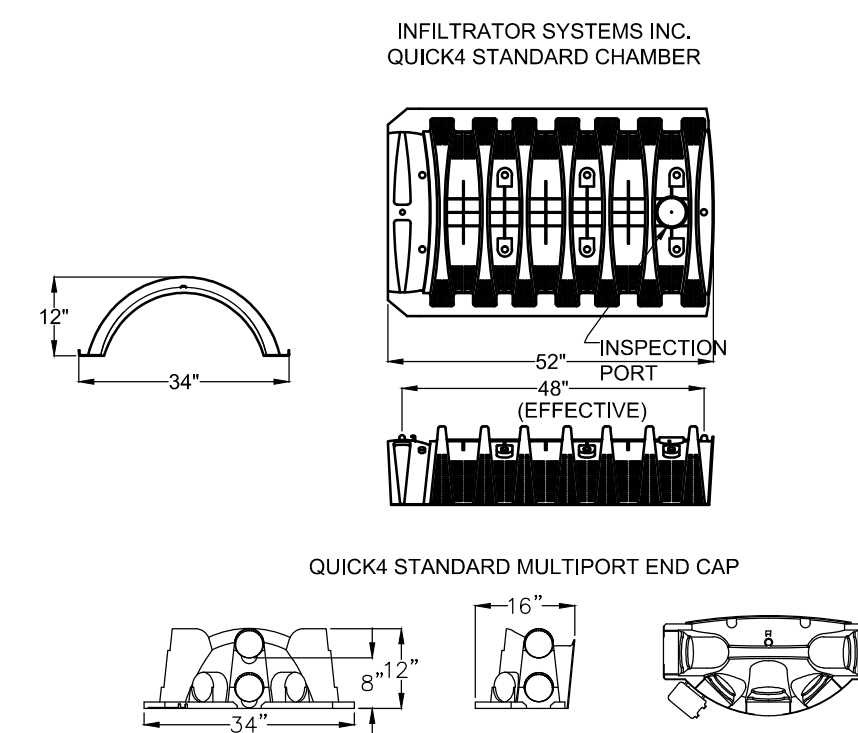
8" RIBBON CURB DETAIL 24" ROLLED CURB & GUTTER DETAIL



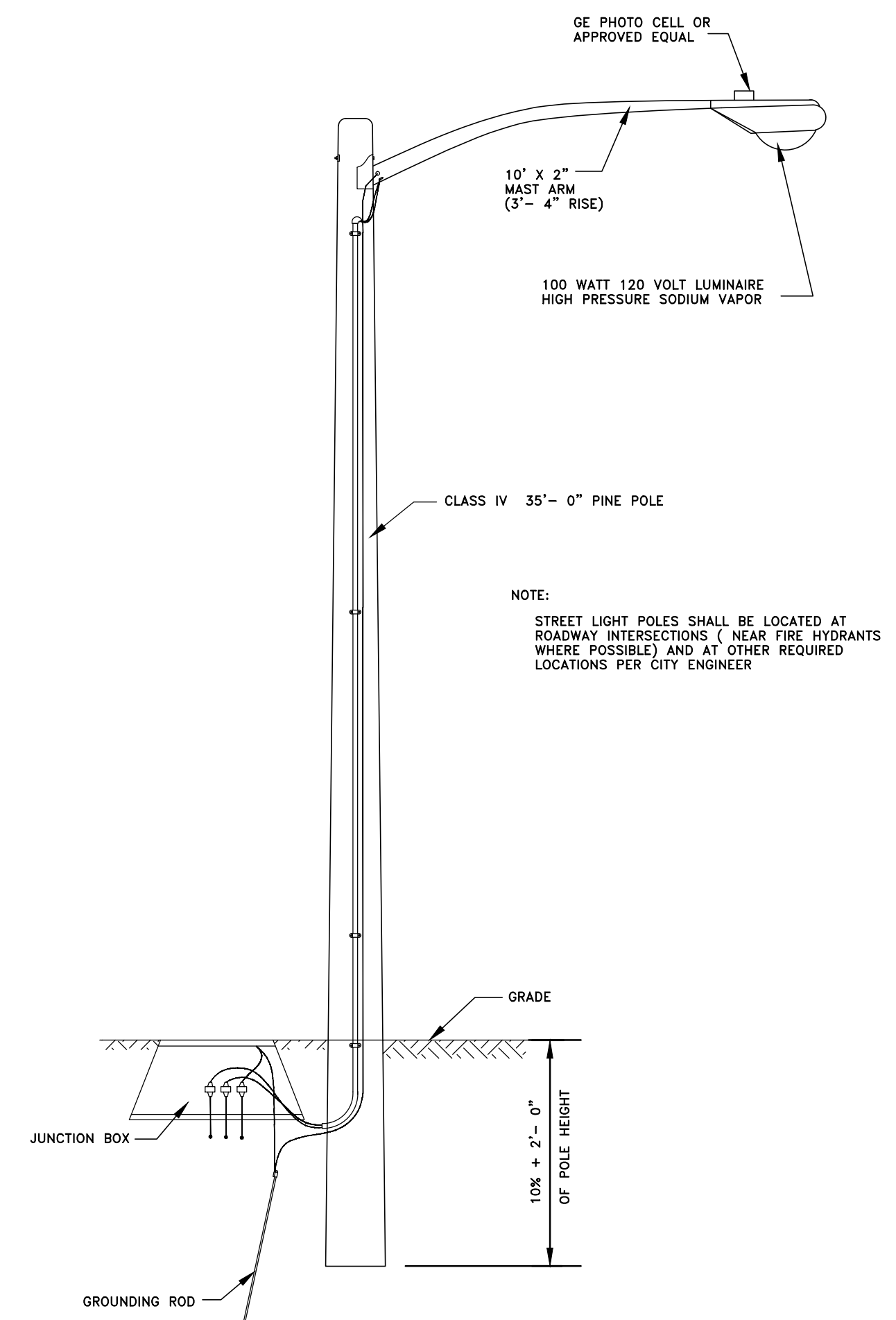
SEPTIC TANK & DRAIN FIELD STANDARD DETAILS



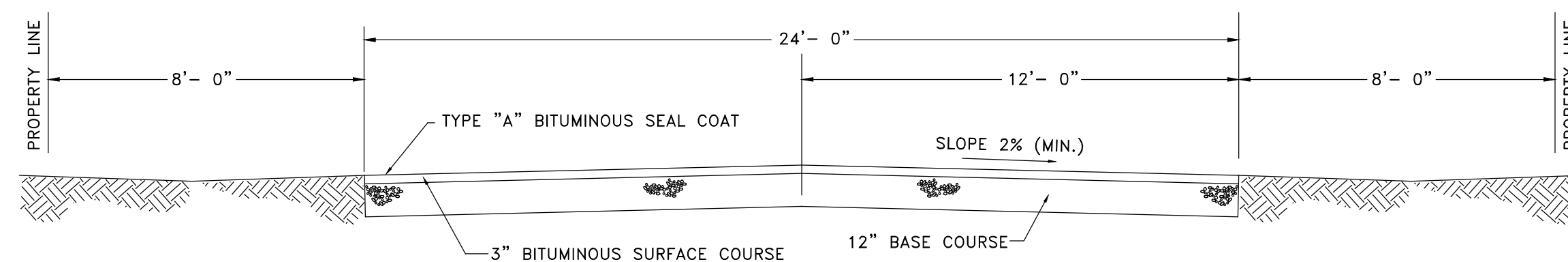
PRODUCT DETAIL EXAMPLE  
(NOT TO SCALE)



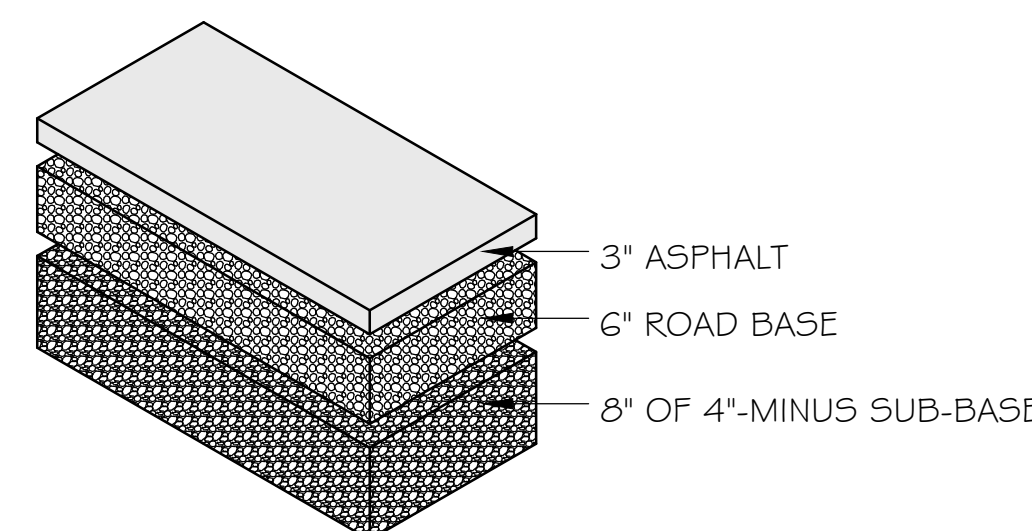
DECORATIVE LIGHT DETAIL



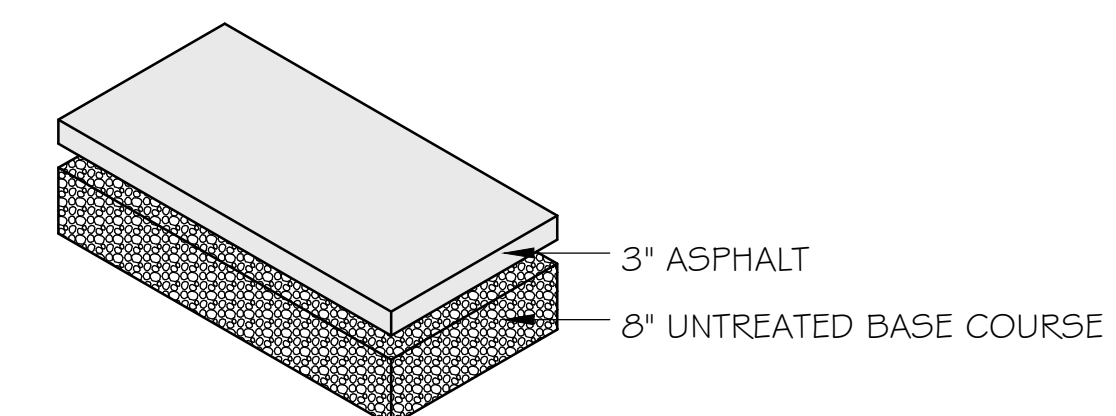
STREET LIGHT POLE DETAIL



TYPICAL ROAD SECTION



SR-162 ROW ASPHALT SECTION



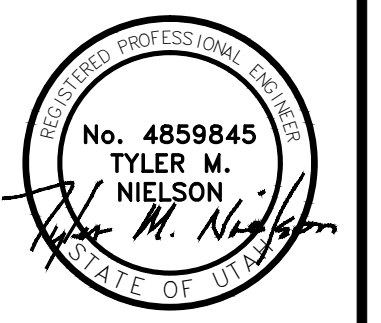
TYPICAL ON-SITE ASPHALT SECTION

DEVELOPER

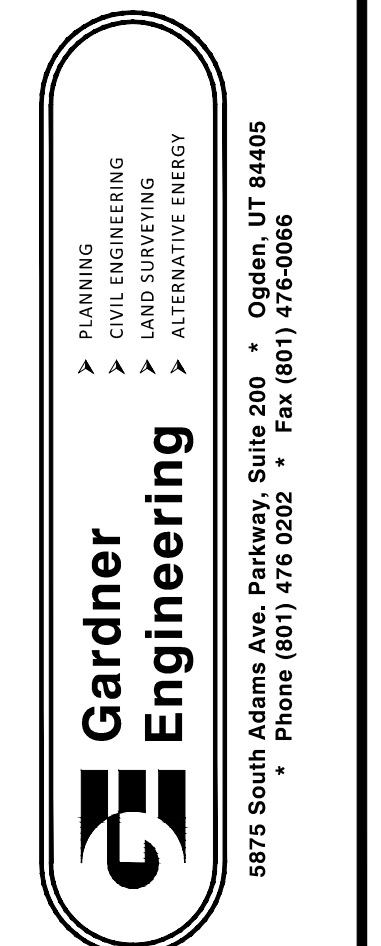
WOP WOM, LLC.  
ERIC SMITH  
212 MERCHANT ST., #330  
HONOLULU, HI 96813  
PHONE: (808) 524-3551  
FAX: (808) 524-8803

SCALE: NOT TO SCALE
DATE: AUGUST 2012
DESIGN: TMN/SCC
DRAWN: RC/SCC
CHECKED: TMN

REVISIONS	DESCRIPTION
DATE	

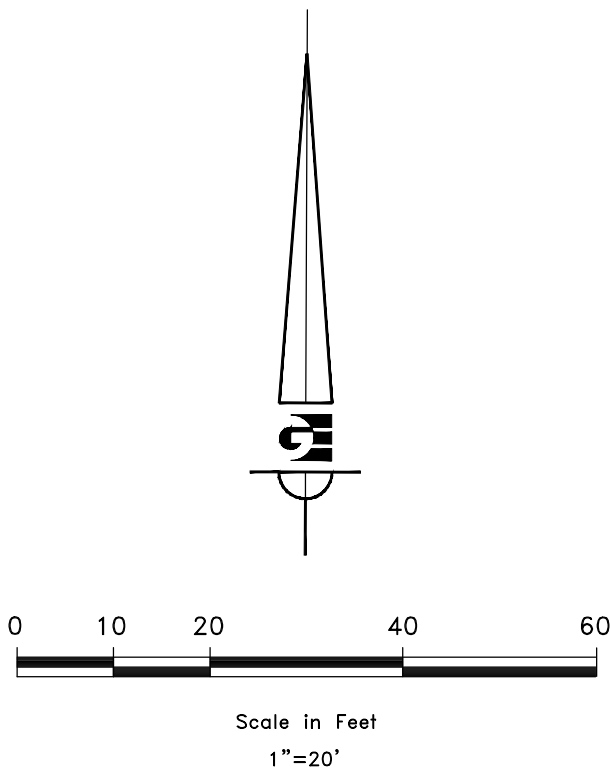


WOP WOM LLC
EDEN CENTER
DETAILS
EDEN CITY, WEBER COUNTY, UTAH



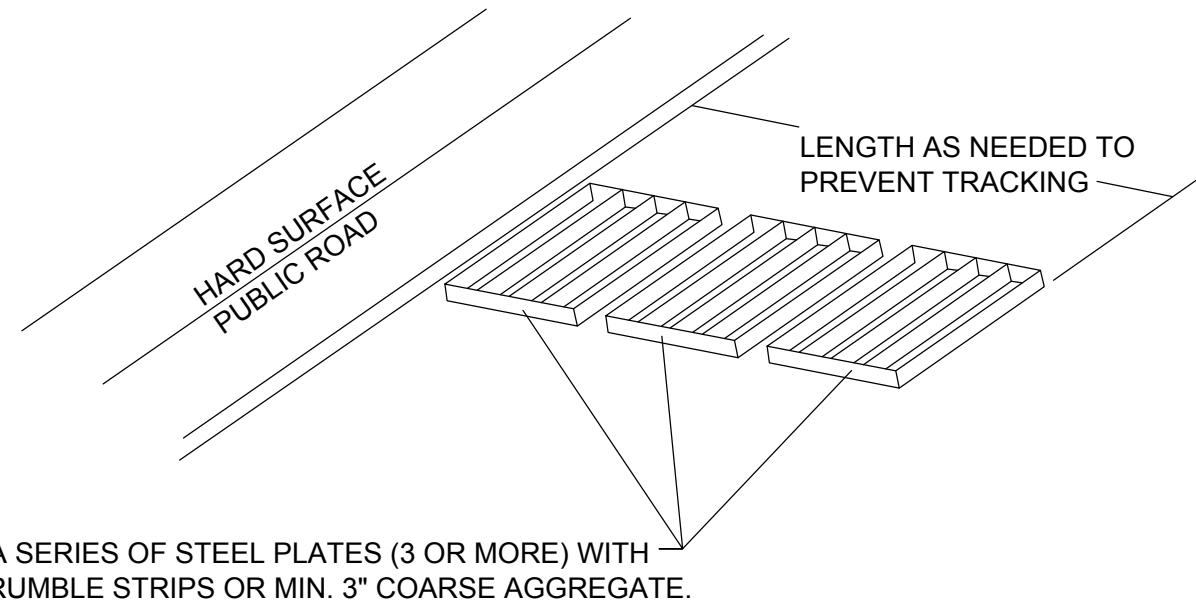


STORM WATER POLLUTION PREVENTION PLAN  
EDEN CENTER  
PART OF THE NORTHWEST QUARTER OF  
SECTION 34 T7N, R1E, SLB & M, U.S. SURVEY  
EDEN CITY, WEBER COUNTY, UTAH  
JUNE 2012



**EROSION CONTROL NOTES:**

1. SANDBAGS WILL BE PLACED AT DISCHARGE LOCATIONS TO CONTAIN AND DIVERT STORM WATER THROUGH THE INLET PROTECTION.
2. AN EARTHEN BERM 6" HIGH WILL BE CONSTRUCTED TO CONTAIN THE STORM WATER AND DIVERT IT TO DISCHARGE AREAS.
3. STORM WATER WILL BE DISCHARGED INTO AN EXISTING DRAINAGE SYSTEM. EXISTING LINES SHALL BE INSPECTED PRIOR TO CERTIFICATE OF OCCUPANCY AND CLEANED IF NECESSARY.
4. THE STORM WATER PREVENTION PLAN SHALL CONFORM TO ALL STATE DIVISION OF ENVIRONMENTAL PROTECTION REGULATIONS.

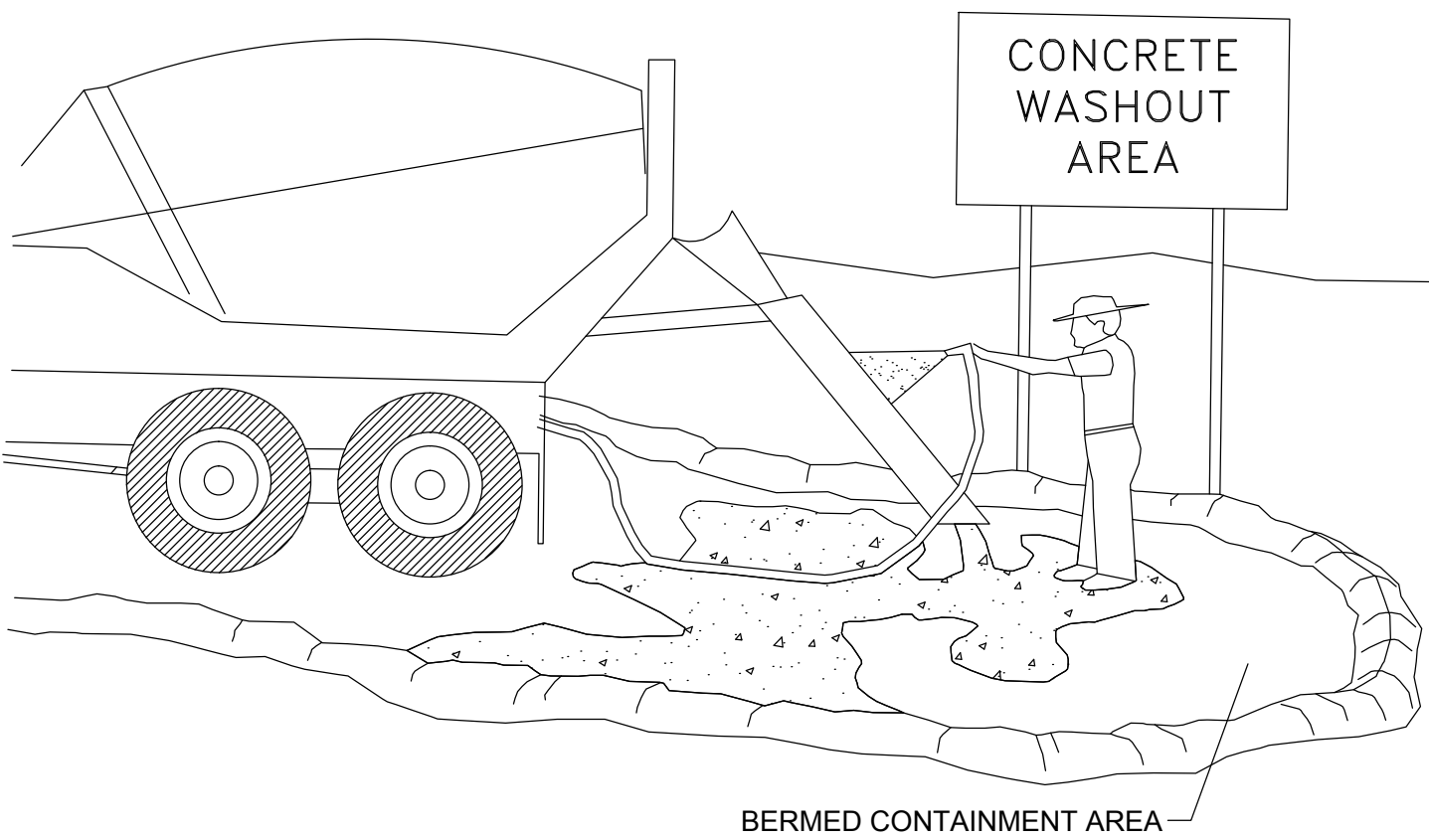


**ENTRANCE STABILIZATION NOTES:**

1. SEDIMENTS AND OTHER MATERIALS SHALL NOT BE TRACKED FROM THE SITE BY VEHICLE TRAFFIC. THE CONSTRUCTION ENTRANCE ROADWAYS SHALL BE STABILIZED SO AS TO PREVENT SEDIMENTS FROM BEING DEPOSITED INTO THE STORM DRAIN SYSTEMS. DEPOSITIONS MUST BE SWEEPED UP IMMEDIATELY AND MAY NOT BE WASHED DOWN BY RAIN OR OTHER MEANS INTO THE STORM DRAIN SYSTEM.
2. STABILIZED CONSTRUCTION ENTRANCE SHALL BE:
  - a. LOCATED AT ANY POINT WHERE TRAFFIC WILL BE ENTERING OR LEAVING A CONSTRUCTION SITE TO OR FROM A PUBLIC RIGHT-OF-WAY, STREET, ALLEY AND SIDEWALK OR PARKING AREA.
  - b. A SERIES OF STEEL PLATES WITH "RUMBLE STRIPS", AND/OR MIN. 3" COARSE AGGREGATE WITH LENGTH, WIDTH AND THICKNESS AS NEEDED TO ADEQUATELY PREVENT ANY TRACKING ONTO PAVED SURFACES.
3. ADDING A WASH RACK WITH A SEDIMENT TRAP LARGE ENOUGH TO COLLECT ALL WASH WATER CAN GREATLY IMPROVE EFFICIENCY.
4. ALL VEHICLES ACCESSING THE CONSTRUCTION SITE SHALL UTILIZE THE STABILIZED CONSTRUCTION ENTRANCE SITES.

**STREET MAINTENANCE:**

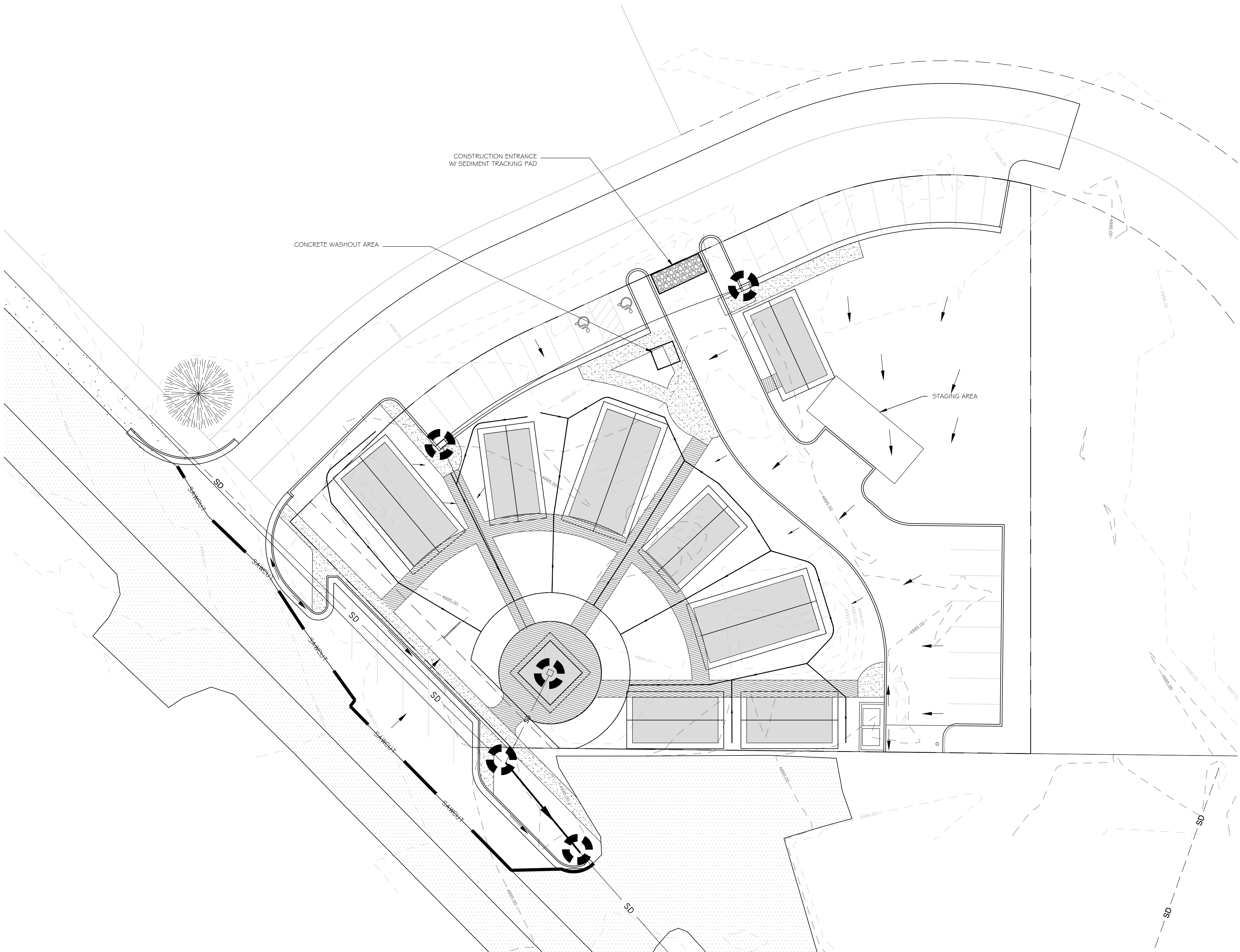
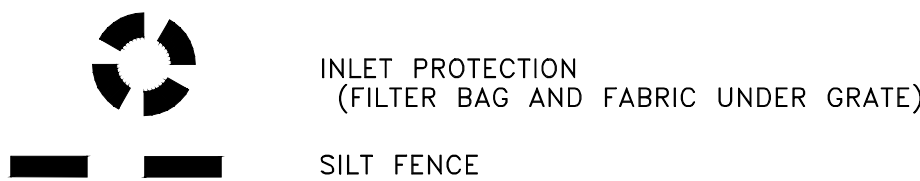
1. REMOVE ALL SEDIMENT DEPOSITED ON PAVED ROADWAYS IMMEDIATELY.
2. SWEEP PAVED AREAS THAT RECEIVE CONSTRUCTION TRAFFIC WHENEVER SEDIMENT BECOMES VISIBLE.
3. PAVEMENT WASHING WITH WATER IS PROHIBITED IF IT RESULTS IN A DISCHARGE TO THE STORM DRAIN SYSTEM.



**NOTES:**

1. EXCESS AND WASTE CONCRETE SHALL NOT BE WASHED INTO THE STREET OR INTO A DRAINAGE SYSTEM.
2. FOR WASHOUT OF CONCRETE AND MORTAR PRODUCTS, A DESIGNATED CONTAINMENT FACILITY OF SUFFICIENT CAPACITY TO RETAIN LIQUID AND SOLID WASTE SHALL BE PROVIDED ON SITE.
3. SLURRY FROM CONCRETE AND ASPHALT SAW CUTTING SHALL BE VACUUMED OR CONTAINED, DRIED, PICKED UP AND DISPOSED OF PROPERLY.

**LEGEND**



NOTICE:  
EXISTING UTILITIES ARE SHOWN ON PLANS FOR THE CONVENIENCE OF THE CONTRACTOR ONLY. THE CONTRACTOR IS RESPONSIBLE FOR THE PROTECTION OF ALL UTILITIES. THE ENGINEER BEARS NO RESPONSIBILITY FOR THE UTILITIES NOT SHOWN OR SHOWN INCORRECTLY.

Call BLUE STAKES BEFORE YOU Dig  
1-800-662-4111  
UNDERGROUND SERVICE CORP.

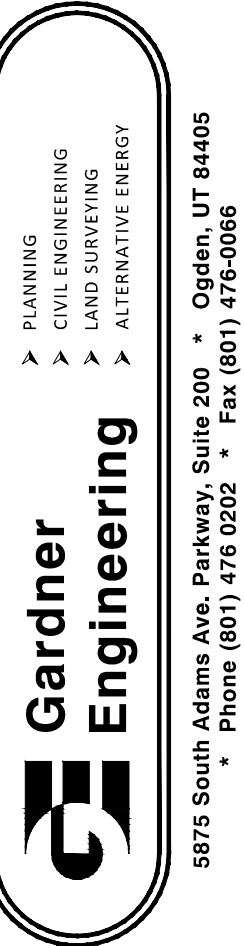
**DEVELOPER**  
WOP WOM, LLC.  
ERIC SMITH  
212 MERCHANT ST. #330  
HONOLULU, HI 96813  
PHONE: (808) 524-3551  
FAX: (808) 524-8803

SCALE: 1" = 20'		DATE: AUGUST 2012	DESIGN: TMN/SCC	DRAWN: SCC	CHECKED: TMN
REVISIONS	DESCRIPTION				
	DATE				

DWG: SEE PLOT STAMP AT LEFT



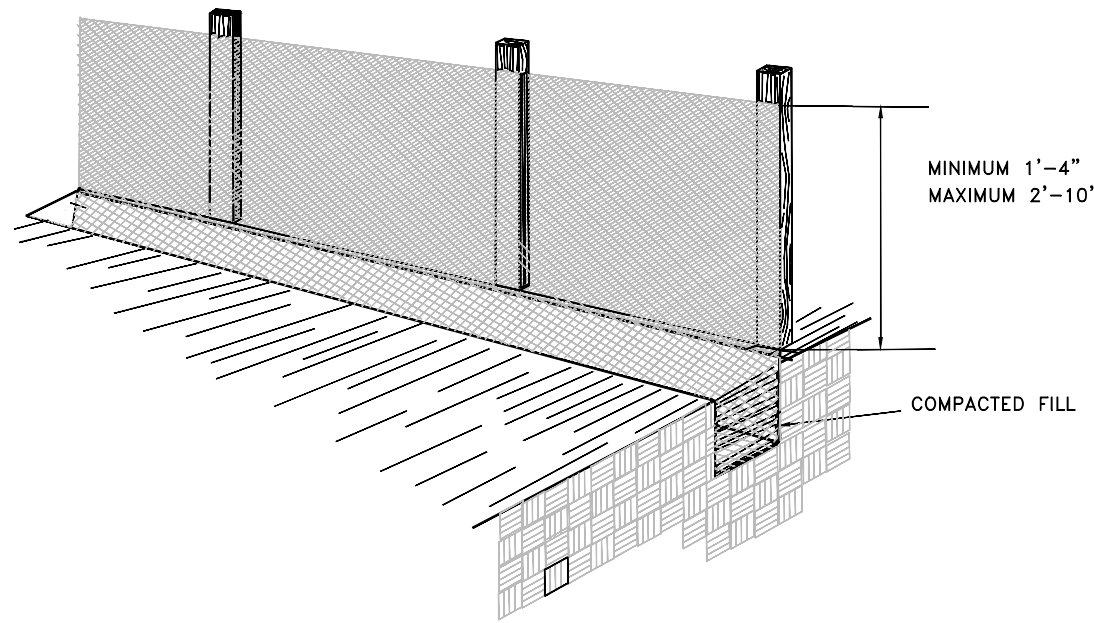
WOP WOM LLC  
EDEN CENTER  
STORM WATER POLLUTION PREVENTION PLAN  
EDEN CITY, WEBER COUNTY, UTAH



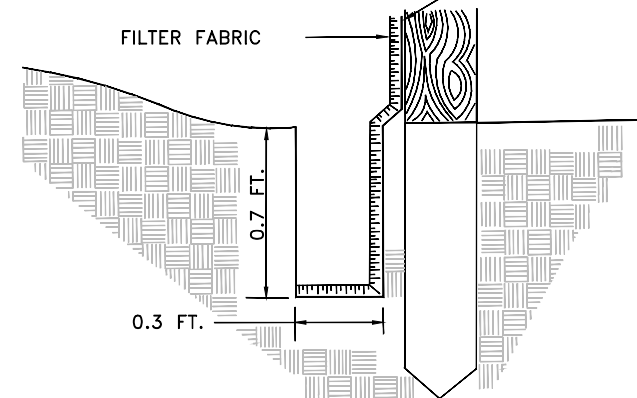
SW  
1

NOTE: ALL CONSTRUCTION TO CONFORM TO WEBER COUNTY STANDARDS AND SPECIFICATIONS.

INSTALL GALVANIZED STEEL WIRE MESH ON WOOD OR STEEL POST TO SUPPORT A SILT FENCE OR FILTER BARRIER.



EXTENSION OF FABRIC AND WIRE INTO THE TRENCH

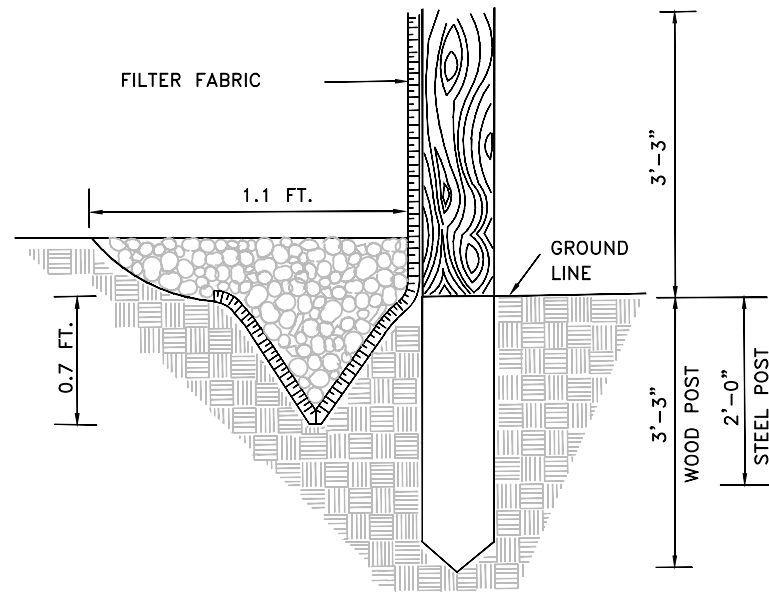


- 1-FILTER FABRIC - 3'-3" MINIMUM WIDTH
- 2-FENCE FUNCTIONS BEST IN SHEET FLOW CONDITIONS
- 3-REMOVE AND DISPOSE OF SEDIMENT WHEN ACCUMULATION REACH 50% FABRIC HEIGHT.
- 4-BACKFILL MIN 0.7 FT. THICK LAYER OF FREE DRAINING GRANULAR BACKFILL MATERIAL.

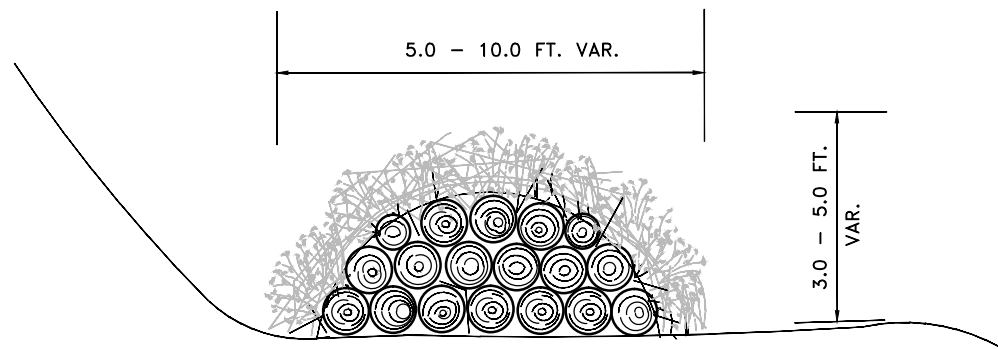
SILT FENCE  
SCALE: N.T.S.

- 1-DEFINITION: BALES OF HAY OR STRAW USED AS A MEANS OF CONTROLLING POLLUTION AND EROSION.
- 2-PURPOSE: TO OBSTRUCT THE FLOW OF WATER TO ALLOW DEPOSIT OF SEDIMENT AND/OR DIVERT WATER TO A SLOPE DRAIN, SEDIMENT BASIN, SEDIMENT TRAP, OR OTHER EROSION CONTROL STRUCTURE.
- 3-CONDITIONS WHERE APPLICABLE:
  - A-USE AT THE BOTTOM OF EMBANKMENT SLOPES TO DIVERT RUNOFF FROM SHEET FLOW AND ALSO CATCH SOME OF THE SEDIMENT PICKED UP IN THE SHEET FLOW.
  - B-AS CHECK DAMS IN SMALL DITCHES AND DRAINAGE AREAS.
  - C-ON THE LOWER SIDE OF CLEARED AREAS TO CATCH SEDIMENT FROM SHEET FLOW.
  - D-AS WATERPROOF CORES FOR STONE SEDIMENT DAMS.
- 4-DESIGN CRITERIA: NONE

- 5-CONSTRUCTION METHODS:
  - A-BALES OF HAY OR STRAW ARE UTILIZED TO CONTROL EROSION, TRAP SEDIMENT, AND DIVERT RUNOFF. THE BALES MUST BE BRACED FROM BEHIND WHEN CONDITIONS REQUIRE.
  - B-WEDGE LOOSE HAY OR STRAW BETWEEN BALES.
  - C-POINTS "A" MUST BE HIGHER THAN POINT "B".
  - D-MORE MAY BE REQUIRED, DEPENDING ON THE SPECIFIC APPLICATION.



FILTER BARRIER  
SCALE: N.T.S.

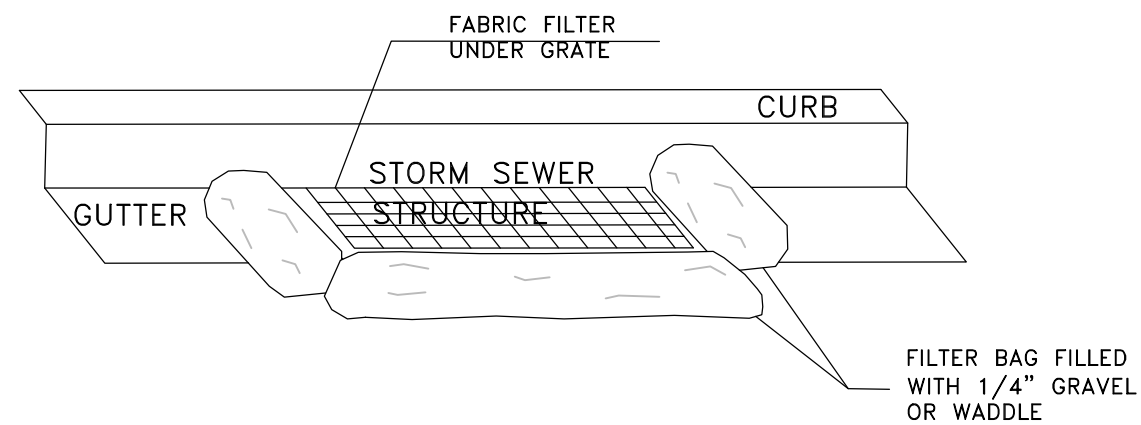


- 1- USE STAKES OR LOGS TO AVOID DISPLACEMENT OF BARRIER.
- 2- ENHANCE PERFORMANCE WITH A WRAPPING OF FILTER FABRIC.

BRUSH FILTER  
SCALE: N.T.S.

ALL DIMENSIONS ARE SHOWN IN INCHES (IN.) UNLESS OTHERWISE NOTED.

## INLET PROTECTION



### STORM WATER POLLUTION PREVENTION PLAN GENERAL NOTES

- A. PROHIBITION ON MOST NON-STORM WATER DISCHARGES  
ONLY STORM WATER FROM THE PROJECT SITE SHALL BE ALLOWED TO FLOW INTO THE ON-SITE STORM DRAIN SYSTEM. CLEAN, NON-CHLORINATED WATER FROM THE FLUSHING OF FIRE HYDRANTS, WATER MAINS, AND STORM DRAINS MAY BE DISCHARGED TO THE STORM DRAIN IF IT IS NOT ALLOWED TO COLLECT DIRT, DEBRIS, AND TRASH WHILE FLOWING TO A STORM DRAIN INLET.
- B. SOURCES OF STORM WATER POLLUTANTS  
STORM WATER POLLUTANTS INCLUDE SOIL SEDIMENT AND NUTRIENTS, OIL, GREASE, TOXIC POLLUTANTS, AND HEAVY METALS. SOURCES OF STORM WATER POLLUTANTS INCLUDE BUT ARE NOT LIMITED TO SOIL EROSION BY WATER AND/OR WIND, CLEARING OF VEGETATION, GRADING, VEHICLE AND EQUIPMENT REFUELING AND MAINTENANCE, WASHING OF CONCRETE TRUCKS, MIXERS AND HANDLING EQUIPMENT, PAINTS, SOLVENTS AND ADHESIVES, AND LANDSCAPING WORK.
- C. EROSION AND SEDIMENT CONTROLS  
1. COVER EXPOSED STOCKPILES OF SOILS, CONSTRUCTION AND LANDSCAPING MATERIAL WITH HEAVY PLASTIC SHEETING.  
2. IN LANDSCAPING AREAS WHERE THE VEGETATION HAS NOT ESTABLISHED GROWTH AND TAKEN HOLD, CONSTRUCT SANDBAG OR DIRT BERMS AROUND THEIR PERIMETER TO INSURE THAT WATER WILL BE CONTAINED INSIDE THE LANDSCAPING AREA AND THAT IT WILL NOT BE CONVEYED TO A STORM DRAIN INLET.  
3. RE-VEGETATE AREAS WHERE LANDSCAPING HAS DIED OR NOT TAKEN HOLD.  
4. DIVERT STORM WATER RUNOFF AROUND DISTURBED SOILS WITH BERMS OR DIRT SWALES.  
D. OTHER CONTROLS  
1. WASTE DISPOSAL  
A. KEEP WASTE DISPOSAL CONTAINERS COVERED.  
B. PROVIDE FOR THE WEEKLY (OR MORE FREQUENT, IF NECESSARY) DISPOSAL OF WASTE CONTAINERS.  
C. PROVIDE CONTAINERS AT CONVENIENT LOCATIONS AROUND THE SITE.  
2. SWEEPING OF SITE  
A. PROVIDE WEEKLY SWEEPING BY HAND OR MECHANICAL MEANS TO KEEP THE PAVED AREAS OF THE SITE FREE OF DUST, DIRT, AND DEBRIS.  
B. DISPOSE OF ACCUMULATED DIRT IN WASTE CONTAINERS, OR HAUL IT OFF THE SITE TO A LANDFILL.  
3. SANITARY/SEPTIC DISPOSAL  
PORTABLE TOILETS AND OTHER SANITARY FACILITIES SHALL BE SERVICED WEEKLY AND PUMPED CLEAN BY A WASTE DISPOSAL COMPANY. NO TOXIC OR HAZARDOUS WASTE SHALL BE DISPOSED IN A PORTABLE TOILET OR IN THE ON-SITE SANITARY SEWER.  
4. SPILLS  
A. STORE ADEQUATE ABSORBENT MATERIALS, RAGS, BROOMS, SHOVELS, AND WASTE CONTAINERS ON THE SITE TO CLEAN-UP SPILLS OF MATERIALS SUCH AS FUEL, PAINT, SOLVENTS, OR CLEANERS. CLEAN UP MINOR SPILLS IMMEDIATELY.  
B. FOR REPORTABLE QUANTITY OF HAZARDOUS OR TOXIC SUBSTANCE, SECURE THE SERVICES OF QUALIFIED PERSONNEL FOR CLEAN-UP AND DISPOSAL.  
5. CONTROL OF ALLOWABLE NON-STORM WATER DISCHARGES  
LANDSCAPING IRRIGATION, EROSION CONTROL MEASURES, PIPE FLUSHING AND TESTING, AND PAVEMENT WASHING ARE ALLOWED IF THEY CANNOT FEASIBLY BE ELIMINATED. COMPLY WITH THIS PLAN, DO NOT CAUSE OR CONTRIBUTE TO A VIOLATION OF WATER QUALITY STANDARDS, AND ARE NOT REQUIRED TO BE PERMITTED BY THE LOCAL REGIONAL WATER QUALITY CONTROL BOARD.  
6. VEHICLES AND EQUIPMENT  
A. FIX LEAKS OF FUEL, OIL AND OTHER SUBSTANCES IMMEDIATELY.  
B. PERFORM REFUELING AND SERVICE OF VEHICLES OR EQUIPMENT OFF-SITE WHEN POSSIBLE. IF REFUELING OR SERVICE OF EQUIPMENT IS PERFORMED ON-SITE, THEN PROVIDE AN IMPERVIOUS, CONTAINED AREA WHERE ANY SPILLS CAN BE CONTAINED WITHOUT FLOWING TO A STORM WATER INLET OR INTO THE GROUND.  
C. USE DRIP PANS TO CATCH LEAKS AND SMALL SPILLS.

### STORM WATER POLLUTION PREVENTION PLAN SPECIFIC NOTES

1. THIS STORM WATER POLLUTION PREVENTION PLAN (SWPPP) WAS DEVELOPED AT THE REQUEST OF THE OWNER, WOP WOM LLC, FOR THE CONSTRUCTION OF A COMMERCIAL SITE CALLED EDEN CENTER, LOCATED IN EDEN CITY, COUNTY OF WEBER, STATE OF UTAH.  
THIS PLAN IDENTIFIES POTENTIAL SOURCES OF POLLUTANTS OF STORM WATER, PRESENTS POLLUTION CONTROL MEASURES, AND ASSISTS IN INSURING IMPLEMENTATION AND MAINTENANCE OF THE BEST MANAGEMENT PRACTICES (BMP'S) INDICATED HEREIN.
2. A NOTICE OF INTENT HAS BEEN FILED WITH THE STATE OF UTAH WATER RESOURCES CONTROL BOARD BY THE OWNER SO THAT THIS CONSTRUCTION PROJECT MAY BE COVERED UNDER THE STATE GENERAL PERMIT. THE PERMIT IS NATIONAL POLLUTION DISCHARGE ELIMINATION SYSTEM (NPDES) GENERAL PERMIT NO. FOR STORM WATER DISCHARGES ASSOCIATED WITH CONSTRUCTION ACTIVITY.
3. IN THE EVENT OF A CHANGE OF OWNERSHIP, A NEW NOTICE OF INTENT SHALL BE FILED WITH THE STATE WATER RESOURCES CONTROL BOARD.
4. IN THE EVENT OF A RELEASE OF A REPORTABLE QUANTITY OF A POLLUTANT, THE CONTRACTOR SHALL ADVISE THE OWNER TO NOTIFY THE NATIONAL RESPONSE CENTER, WEBER COUNTY AND GARDNER ENGINEERING. IF NECESSARY, THIS POLLUTION PREVENTION PLAN SHOULD BE REVISED TO REFLECT THE CHANGE IN CONDITIONS OF THE CONSTRUCTION ACTIVITY. A REPORTABLE QUANTITY IS ESTABLISHED BY 40 CODE OF FEDERAL REGULATIONS (CFR) 117.3 OR 40 CFR 302.4.
5. ALL CONTRACTORS AND THEIR PERSONNEL WHOSE WORK CAN CONTRIBUTE TO OR CAUSE POLLUTION OF STORM WATER SHOULD BE MADE FAMILIAR WITH THIS POLLUTION PREVENTION PLAN. ADEQUATE TRAINING FOR IMPLEMENTATION OF THE MEASURES PRESENTED HEREIN SHALL BE PROVIDED TO THE CONTRACTORS AND THEIR PERSONNEL.
6. CHANGES IN CONSTRUCTION OR IN CONDITIONS WHICH ARE NOT COVERED BY THIS PLAN SHOULD BE BROUGHT TO THE ATTENTION OF THE OWNER AND GARDNER ENGINEERING. IF NECESSARY, THIS POLLUTION PREVENTION PLAN WILL BE REVISED TO REFLECT THE CHANGE IN CONSTRUCTION OR IN CONDITIONS.
7. ALL PREVENTION AND CLEAN UP MEASURES SHOULD BE CONDUCTED IN ACCORDANCE WITH OGDEN CITY ORDINANCES, AS WELL AS STATE AND FEDERAL REGULATIONS. WASTE MATERIALS SHOULD BE DISPOSED OF IN A LEGAL MANNER.
- ALL DISCHARGERS OF STORM WATER MUST COMPLY WITH THE LAWFUL REQUIREMENTS OF WEBER COUNTY AND OTHER LOCAL AGENCIES REGARDING THE DISCHARGES OF STORM WATER TO STORM DRAINS.
8. THIS PLAN DOES NOT COVER THE REMOVAL OF HAZARDOUS OR TOXIC WASTE. IN THE EVENT OF A DISCHARGE OR RELEASE OF A REPORTABLE QUANTITY OF TOXIC WASTE, WORK SHOULD BE STOPPED UNTIL THE SPILL CAN BE ASSESSED AND A MITIGATION REPORT PREPARED BY A QUALIFIED ENVIRONMENTAL CONSULTANT, AND IF NECESSARY, REVIEWED BY WEBER COUNTY AND ANY OTHER AGENCY HAVING JURISDICTION.
9. THIS SWPPP SHALL BE MADE AVAILABLE TO THE PUBLIC UNDER SECTION 306(B) OF THE CLEAN WATER ACT. UPON REQUEST BY MEMBERS OF THE PUBLIC, THE DISCHARGER SHALL MAKE AVAILABLE FOR REVIEW A COPY OF THIS SWPPP EITHER TO THE REGIONAL WATER BOARD OR DIRECTLY TO THE REQUESTER.
- THIS SWPPP MUST BE KEPT ON SITE DURING CONSTRUCTION ACTIVITY AND MADE AVAILABLE UPON REQUEST OF A REPRESENTATIVE OF THE REGIONAL WATER BOARD AND/OR THE LOCAL AGENCY.
10. CONTACTS  
OWNER/DEVELOPER  
WOP WOM LLC  
ERIC SMITH  
212 MERCHANT ST. #330  
HONOLULU, HI 96813  
(808)524-3551  
STATE OF UTAH  
DEPARTMENT OF ENVIRONMENTAL QUALITY  
DIVISION OF WATER QUALITY  
280 NORTH 1460 WEST (801) 538-6146  
P.O. BOX 144870  
SALT LAKE CITY, UTAH 84114  
U.S. EPA  
ENVIRONMENTAL PROTECTION AGENCY  
DENVER, COLORADO REGION VIII  
800-759-4372  
ENVIRONMENTAL PROTECTION AGENCY 202-475-9518  
WASHINGTON, D.C. 20460  
11. REFERENCES  
A. IMPROVEMENT PLANS PER GARDNER ENGINEERING DATED DECEMBER 2011.  
B. STORM WATER POLLUTION PREVENTION PLAN PREPARED BY GARDNER ENGINEERING DATED DECEMBER 2011.  
12. THE PROPOSED CONSTRUCTION ACTIVITY IS THE COMMERCIAL PROJECT EDEN CENTER.  
13. LOCATION OF THE SITE: EDEN CITY, WEBER COUNTY, UTAH

### DEFINITIONS

1. "BEST MANAGEMENT PRACTICES" (BMP'S) MEANS SCHEDULES OF ACTIVITIES, PROHIBITIONS OF PRACTICES, MAINTENANCE PROCEDURES, AND OTHER MANAGEMENT PRACTICES TO PREVENT OR REDUCE THE POLLUTION OF WATERS OF THE UNITED STATES. BMP'S ALSO INCLUDE TREATMENT REQUIREMENTS, OPERATING PROCEDURES, AND PRACTICES TO CONTROL SITE RUNOFF, SPILLAGE OR LEAKS, WASTE DISPOSAL, OR DRAINAGE FROM RAW MATERIAL STORAGE.
2. "CLEAN WATER ACT" ("CWA") MEANS THE FEDERAL WATER POLLUTION CONTROL ACT ENACTED BY PUBLIC LAW 92-500 AS AMENDED BY PUBLIC LAWS 95-217, 95-578, 96-483, AND 97-111, 33 USC 1251 ET SEQ.
3. "CONSTRUCTION SITE" IS THE LOCATION OF THE CONSTRUCTION ACTIVITY.
4. "NON-STORM WATER DISCHARGE" MEANS ANY DISCHARGE TO STORM DRAIN SYSTEMS THAT IS NOT COMPOSED ENTIRELY OF STORM WATER EXCEPT DISCHARGE PURSUANT TO AN NPDES PERMIT AND DISCHARGES RESULTING FROM FIRE FIGHTING ACTIVITIES.
5. "SIGNIFICANT MATERIAL" INCLUDES, BUT IS NOT LIMITED TO RAW MATERIALS, FUELS, MATERIALS SUCH AS SOLVENTS, DETERGENTS, AND PLASTIC PELLETS; FINISHED MATERIALS SUCH AS METALLIC PRODUCTS; RAW MATERIALS USED IN FOOD PROCESSING OR PRODUCTION HAZARDOUS SUBSTANCES DESIGNATED UNDER SECTION 101(14) OF THE COMPREHENSIVE ENVIRONMENTAL RESPONSE, COMPENSATION, AND LIABILITY ACT (CERCLA); ANY CHEMICAL THE FACILITY IS REQUIRED TO REPORT PURSUANT TO SECTION 313 OF TITLE II OF SUPERFUND AMENDMENTS AND REAUTHORIZATION ACT (SARA); FERTILIZERS, PESTICIDES, AND WASTE PRODUCTS SUCH AS ASHES, SLAG, AND SLUDGE THAT HAVE THE POTENTIAL TO BE RELEASED WITH STORM WATER DISCHARGES.
6. "SIGNIFICANT QUANTITIES" IS THE VOLUME, CONCENTRATIONS, OR MASS OF A POLLUTANT IN STORM WATER DISCHARGE THAT CAN CAUSE OR THREATEN TO CAUSE POLLUTION, CONTAMINATION, OR NUISANCE, ADVERSELY IMPACT HUMAN HEALTH OR THE ENVIRONMENT, AND CAUSE OR CONTRIBUTE TO A VIOLATION OF ANY APPLICABLE WATER QUALITY STANDARDS FOR THE RECEIVING WATER.
7. "STORM WATER" MEANS STORM WATER RUNOFF, SNOW MELT RUNOFF, SURFACE RUNOFF AND DRAINAGE, IT EXCLUDES INFILTRATION AND RUNOFF FROM AGRICULTURAL LAND.
8. "POLLUTION" MEANS THE "MAN-MADE OR MAN-INDUCED ALTERATION OF THE CHEMICAL, PHYSICAL, BIOLOGICAL, AND RADIOLOGICAL INTEGRITY OF WATER" (CLEAN WATER ACT SECTION 502(19)). POLLUTION ALSO MEANS "AN ALTERATION OF THE QUALITY OF THE WATERS OF THE STATE BY WASTE TO A DEGREE WHICH UNREASONABLY AFFECTS EITHER... THE WATERS FOR BENEFICIAL USES... OR FACILITIES WHICH SERVE THESE BENEFICIAL USES" (CALIFORNIA WATER CODE SECTION 13950(1)).
9. "CONTAMINATION" MEANS "AN IMPAIRMENT OF THE QUALITY OF THE WATERS OF THE STATE BY WASTE TO A DEGREE WHICH CREATES A HAZARD TO THE PUBLIC HEALTH THROUGH POISONING OR THROUGH THE SPREAD OF DISEASE, INCLUDING ANY EQUIVALENT EFFECT RESULTING FROM THE DISPOSAL OF WASTE, WHETHER OR NOT WATERS OF THE STATE ARE AFFECTED."
10. "NUISANCE" MEANS "ANYTHING WHICH MEETS ALL OF THE FOLLOWING REQUIREMENTS (1) IS INJURIOUS TO HEALTH, OR IS INCONVENIENT OR OFFENSIVE TO THE SENSES, OR AN OBSTRUCTION TO THE FREE USE OF PROPERTY, SO AS TO INTERFERE WITH THE COMFORTABLE ENJOYMENT OF LIFE AND PROPERTY; (2) AFFECTS AT THE SAME TIME AN ENTIRE COMMUNITY OR NEIGHBORHOOD OR ANY CONSIDERABLE NUMBER OF PERSONS, ALTHOUGH THE EXTENT OF THE ANNOYANCE OR DAMAGE INFLICTED UPON INDIVIDUALS MAY BE UNEQUAL; (3) OCCURS DURING OR AS A RESULT OF THE TREATMENT OR DISPOSAL OF WASTES."
11. "LOCAL AGENCY" MEANS ANY AGENCY THAT IS INVOLVED WITH REVIEW, APPROVAL, OR OVERSIGHT OF THE CONSTRUCTION SITES: (A) CONSTRUCTION ACTIVITY, (B) EROSION AND SEDIMENT CONTROLS, (C) STORM WATER DISCHARGE.

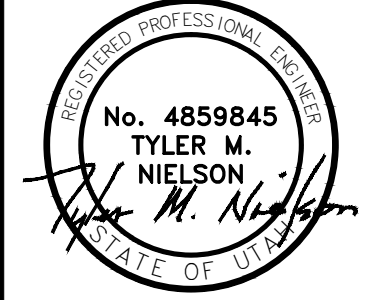
NOTICE:  
EXISTING UTILITIES ARE SHOWN ON PLANS FOR THE CONVENIENCE OF THE CONTRACTOR. THE CONTRACTOR IS RESPONSIBLE FOR THE PROTECTION OF ALL UTILITIES. THE ENGINEER BEARS NO RESPONSIBILITY FOR THE UTILITIES NOT SHOWN OR SHOWN INCORRECTLY.

Call BLUE STAKES BEFORE YOU Dig  
1-800-662-4111  
UNDERGROUND SERVICE CORP.

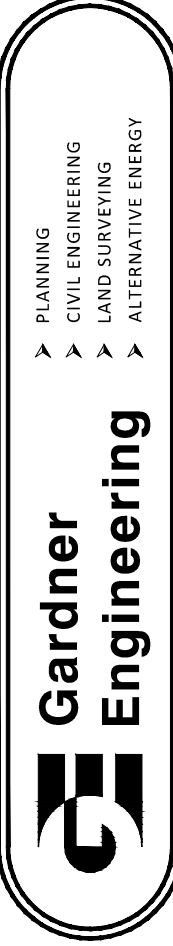
### DEVELOPER

WOP WOM, LLC.  
ERIC SMITH  
212 MERCHANT ST. #330  
HONOLULU, HI 96813  
PHONE: (808) 524-3551  
FAX: (808) 524-8803

REVISIONS	DATE	DESCRIPTION



## WOP WOM LLC EDEN CENTER STORM WATER POLLUTION PREVENTION PLAN EDEN CITY, WEBER COUNTY, UTAH



5875 South Adams Ave. Parkway, Suite 200 • Ogden, UT 84405  
• Phone (801) 476 0202 • Fax (801) 476-0066

SW

2

NOTE: ALL CONSTRUCTION TO CONFORM TO WEBER COUNTY STANDARDS AND SPECIFICATIONS.