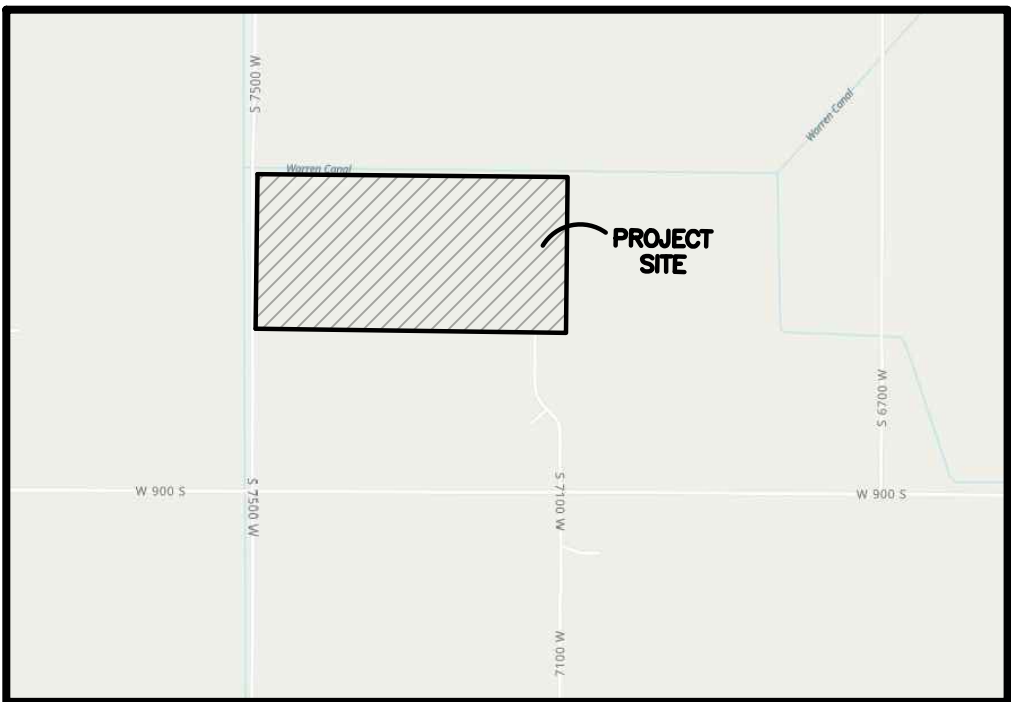
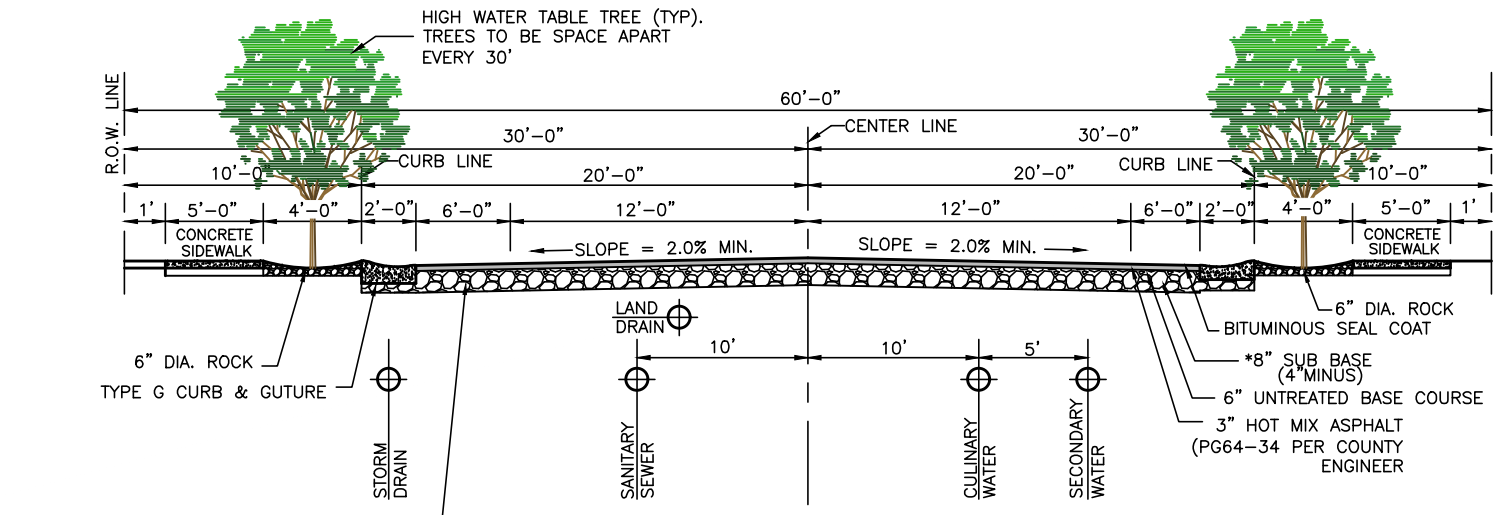
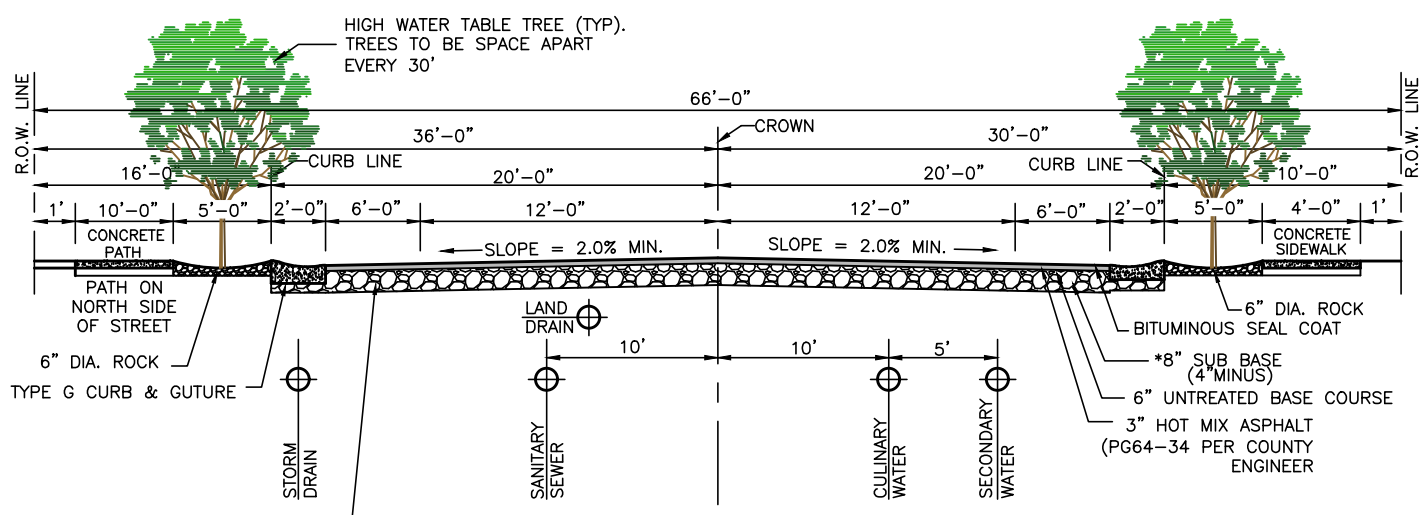
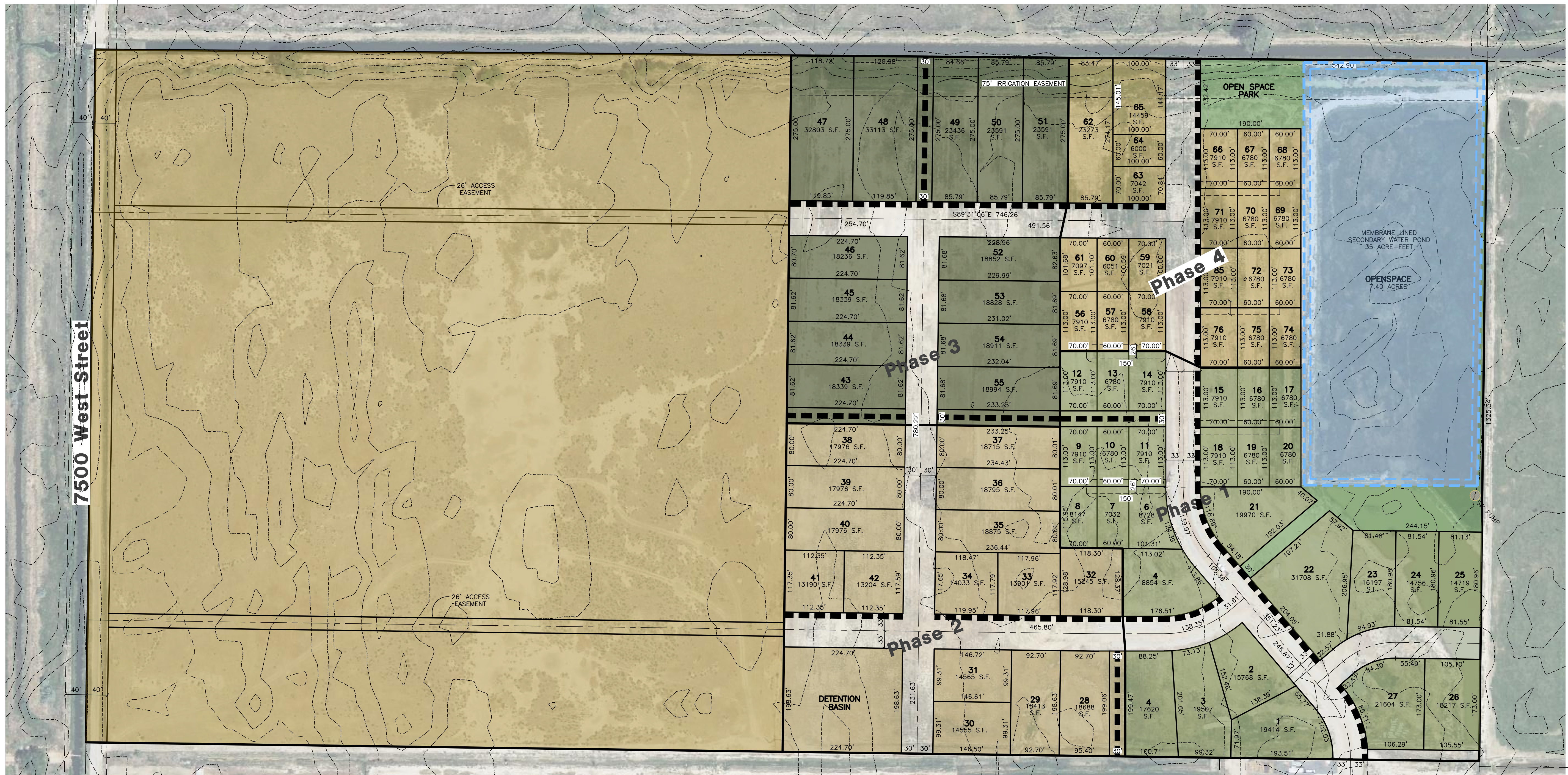


REVISIONS	DESCRIPTION

DATE	

Project Info.	
Engineer:	N. Reeve
Planner:	C. Cove
Date:	3-16-23
Name:	LONGHORN
Number:	6298-23

Sheet	2
1	Sheets



Density Calculations

Total Area.....	40.03 ac. (1,743,788 s.f.)
Pond Area.....	6.46 ac. (281,234 s.f.)
Developable Area.....	33.57 ac. (1,462,554 s.f.)
Density.....	1,462,554 s.f./15,000 s.f. = 97.50 Lots
76 Proposed Lots	

Developer:
 Pat Burns
 Lync Construction
 1946 W. 5600 S.
 Roy, UT. 84067
 (801) 710-2234

Longhorn

Weber County, Utah

