



REVISIONS	DESCRIPTION
DATE	

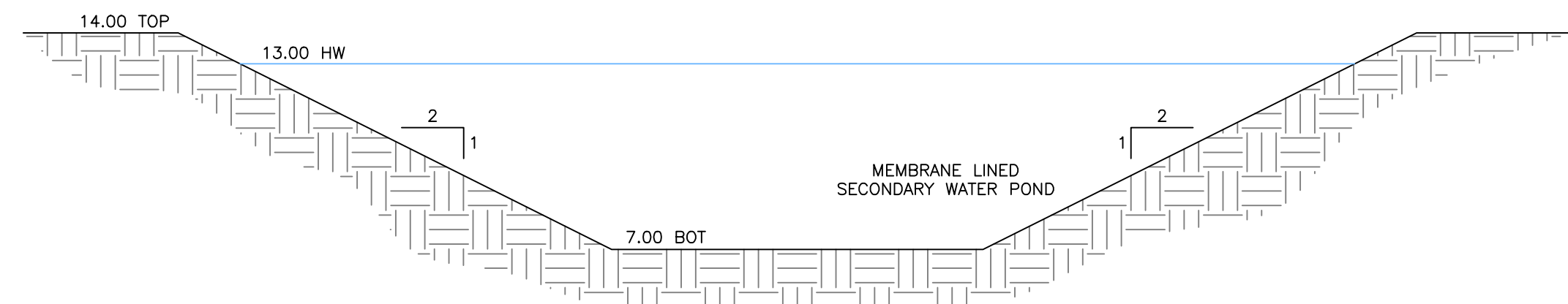
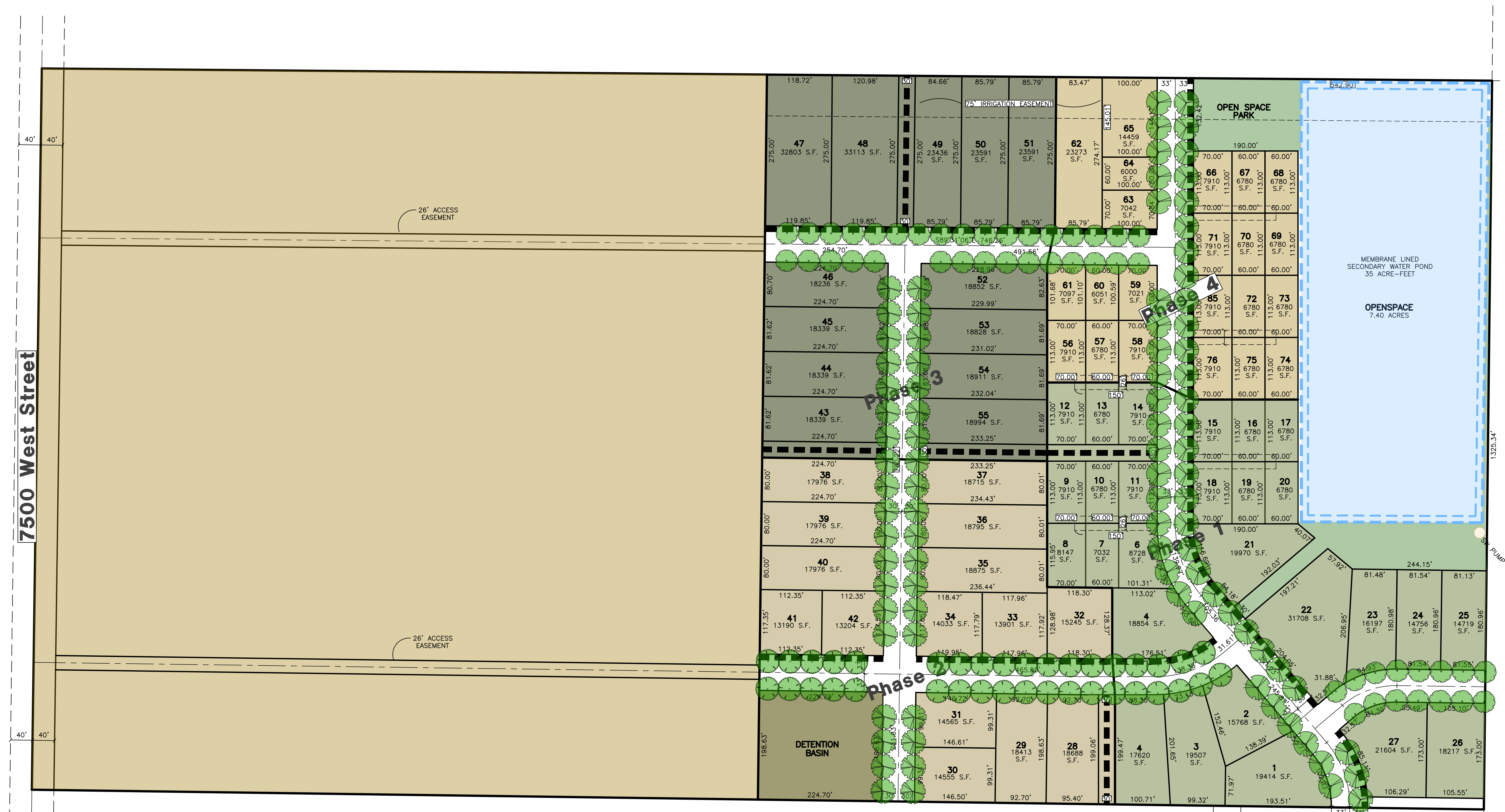
**Longhorn**  
PART OF THE SE 1/4 OF SECTION 14 T.6N, R.3W, S.LB & M., U.S. SURVEY  
WEBER COUNTY, UTAH

**Street Tree Plan**

**Project Info.**  
Engineer: N. Reeve  
Planner: C. Cove

**Developer:**  
Pat Burns  
Lync Construction  
1946 W. 5600 S.  
Roy, UT. 84067  
(801) 710-2234

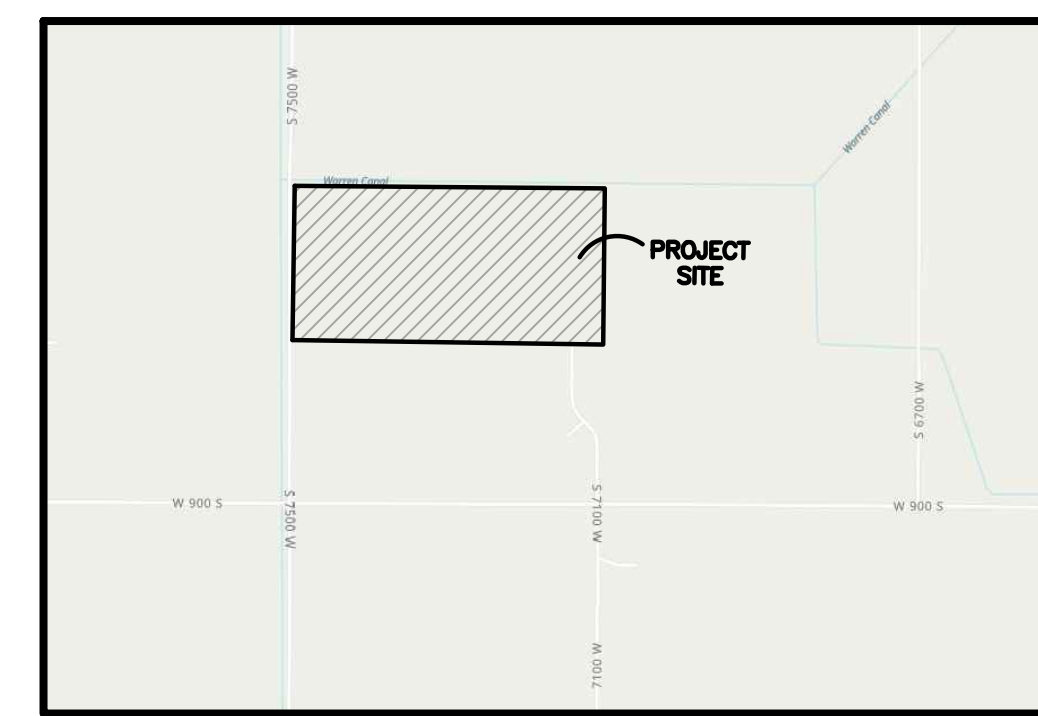
Sheet	2
2	Sheets



**Secondary Pond Detail**  
SCALE: NO SCALE

**PLANT TABLE**

Quantity	Symbol	Scientific Name	Common Name	Size
54		<i>Celtis occidentalis</i>	Common Hackberry	2" cal.
37		<i>Liquidambar styraciflua</i>	American Sweet Gum	2" cal.
47		<i>Quercus bicolor</i>	Swamp Oak	2" cal.
38		<i>Zelkova serrata 'Village Green'</i>	Village Green Zelkova	2" cal.



**VICINITY MAP**  
NO SCALE

**Longhorn**  
Weber County, Utah

**Density Calculations**

Total Area.....	40.03 ac. (1,743,788 s.f.)
Pond Area.....	6.46 ac. (281,234 s.f.)
Developable Area.....	33.57 ac. (1,462,554 s.f.)
Density...1,462,554 s.f./15,000 s.f. =	97.50 Lots
76 Proposed Lots	

