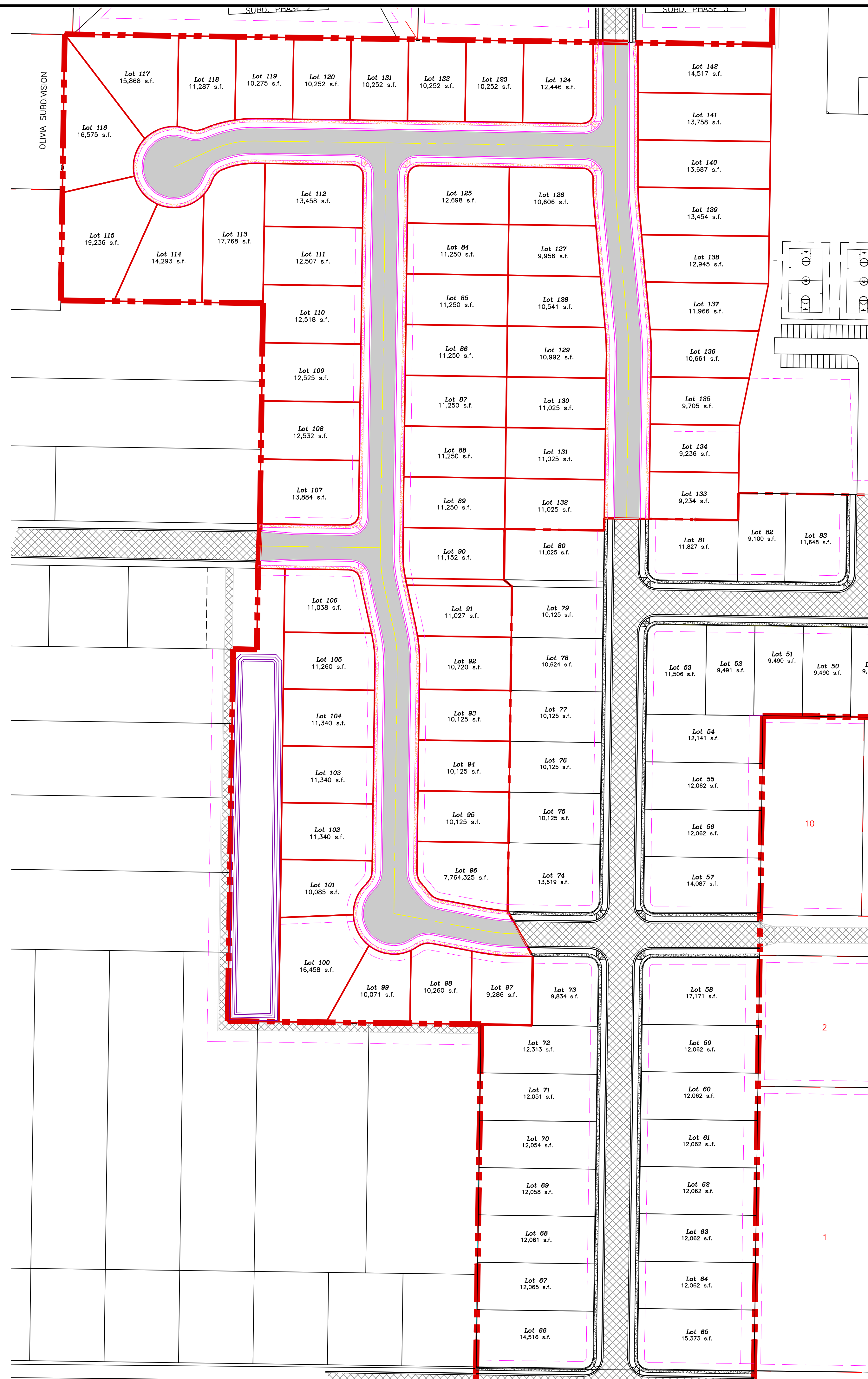
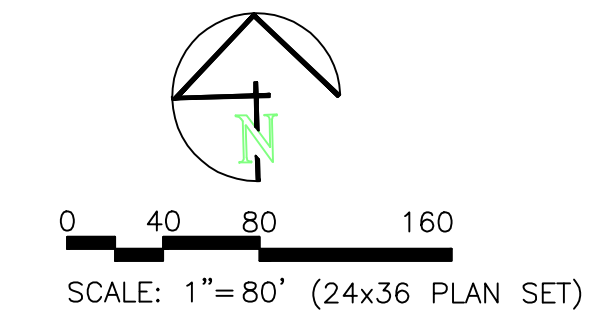


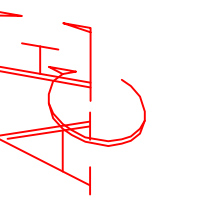
TAYLOR LANDING  
A CLUSTER SUBDIVISION  
PHASE 4/5



SEAL

ALLIANCE CONSULTING  
ENGINEERS

150 EAST 2000 NORTH SUITE P  
CITY, UT 84321  
(435) 735-9171  
allianceeng@ytco.com



CONFIDENTIALITY AND COPYRIGHT NOTICE  
UNAUTHORIZED USE, DISCLOSURE, OR COPYING OF THIS  
DRAWING IS PROHIBITED.  
CONSTRUCTION DOCUMENTS THAT ARE DISTRIBUTED FOR  
CONSTRUCTION SHALL BE RETURNED TO THE ENGINEER  
BE DESCRIBED WITHIN 30 DAYS AFTER THE BID OPENING  
BY THE PLAN HOLDER.  
COPYRIGHT 2025

NO.	REVISIONS / SUBMISSIONS	DATE

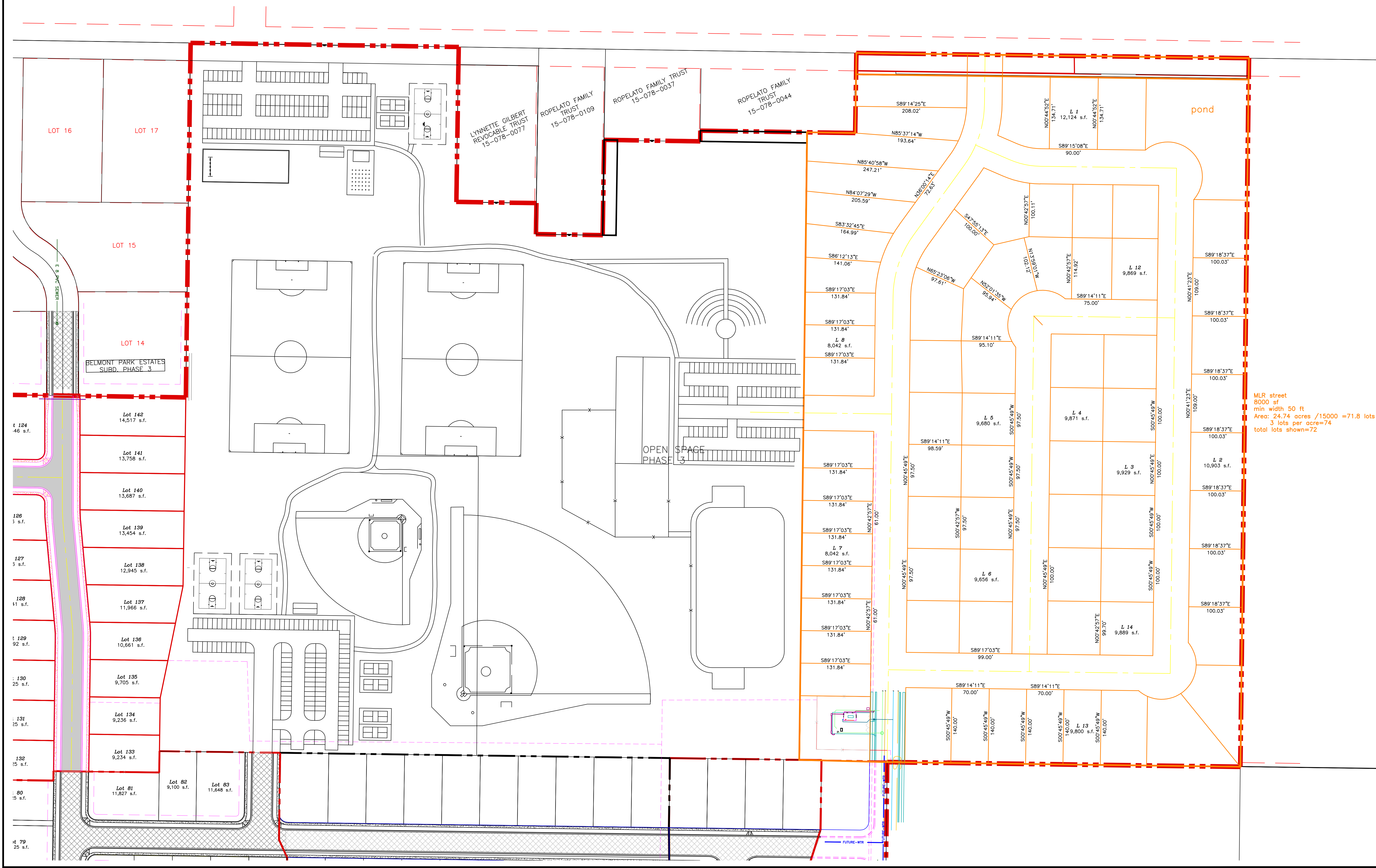
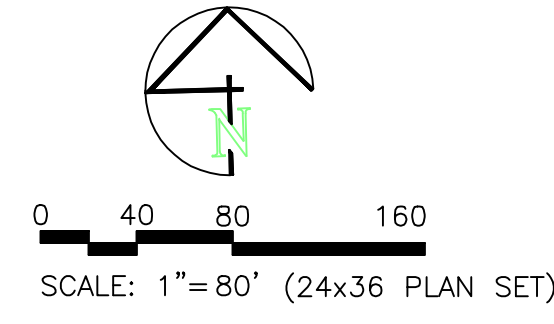
REVIEWED: \_\_\_\_\_ DRAWN: \_\_\_\_\_ PROJECT NO.: \_\_\_\_\_  
CDD FILE: \_\_\_\_\_

PROJECT TITLE  
**TAYLOR LANDING  
A CLUSTER SUBDIVISION**  
DRAWING TITLE  
**PHASE 4/5**

DATE - SEPT, 2023  
DRAWING No. **11**



TAYLOR LANDING  
A CLUSTER SUBDIVISION  
MASTERPLAN



MLR street  
8000 sf  
min width 50 ft  
Area: 24.74 acres /15000 =71.8 lots  
3 lots per acre=74  
total lots shown=72

SCALE

ALLIANCE CONSULTING ENGINEERS  
150 EAST 200 NORTH SUITE P  
LOGAN, UTAH 84321  
(435)755-5121  
allianceclogan@yahoo.com

CONFIDENTIALITY AND COPYRIGHT NOTICE  
UNAUTHORIZED USE, DISCLOSURE, OR COPYING OF THIS DRAWING IS PROHIBITED.  
CONSTRUCTION DOCUMENTS THAT ARE DISTRIBUTED FOR BIDDING PURPOSES SHALL NOT BE RETURNED AND SHALL BE DESTROYED WITHIN 30 DAYS AFTER THE BID OPENING BY THE PLAN HOLDER.  
DRAWN :  
PROJECT NO. :  
DATE :  
NO. :  
REVISIONS / SUBMISSIONS  
REVIEWED :  
CADD FILE :

DATE	
NO.	
REVISIONS / SUBMISSIONS	
REVIEWED :	
CADD FILE :	

TAYLOR LANDING  
A CLUSTER SUBDIVISION  
MASTERPLAN

PROJECT TITLE  
DATE : SEPT, 2023  
DRAWING No. 2