

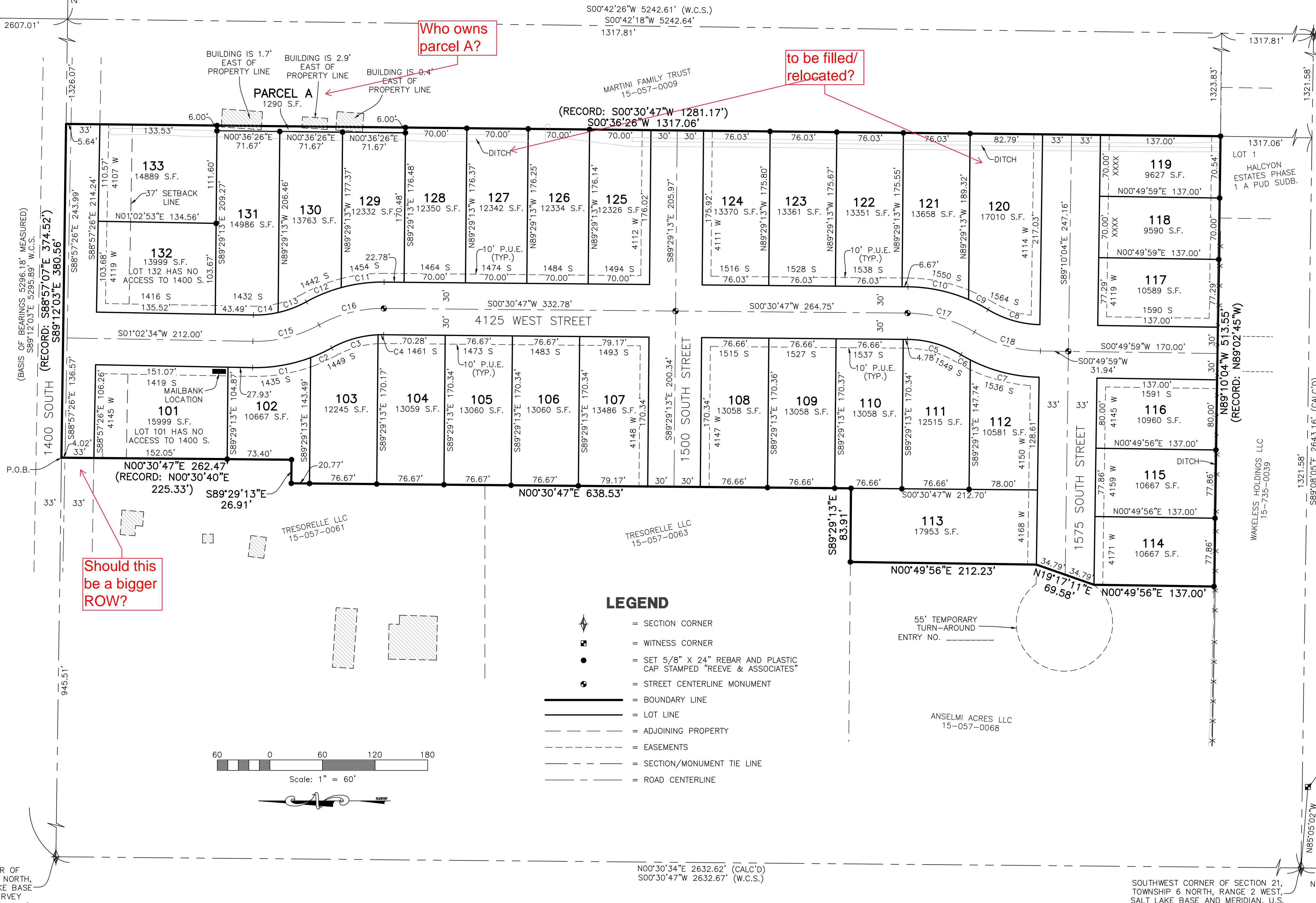
ANSEMI ACRES SUBDIVISION PHASE 1

PART OF THE SOUTHWEST QUARTER OF SECTION 21, TOWNSHIP 6 NORTH, RANGE 2 WEST, SALT LAKE BASE & MERIDIAN, U.S. SURVEY
WEBER COUNTY, UTAH
DECEMBER, 2023

EAST QUARTER CORNER OF SECTION 21, TOWNSHIP 6 NORTH, RANGE 2 WEST, SALT LAKE BASE AND MERIDIAN, U.S. SURVEY (FOUND BRASS CAP MONUMENT 0.55' UNDER RING AND LID) SEE MONUMENT DETAIL 1

NORTH QUARTER CORNER OF SECTION 21, TOWNSHIP 6 NORTH, RANGE 2 WEST, SALT LAKE BASE AND MERIDIAN, U.S. SURVEY (FOUND BRASS CAP MONUMENT) SEE MONUMENT DETAIL 2

SOUTH QUARTER CORNER OF SECTION 21, TOWNSHIP 6 NORTH, RANGE 2 WEST, SALT LAKE BASE AND MERIDIAN, U.S. SURVEY (FOUND BRASS CAP MONUMENT 0.44' UNDER RING AND LID) SEE MONUMENT DETAIL 4



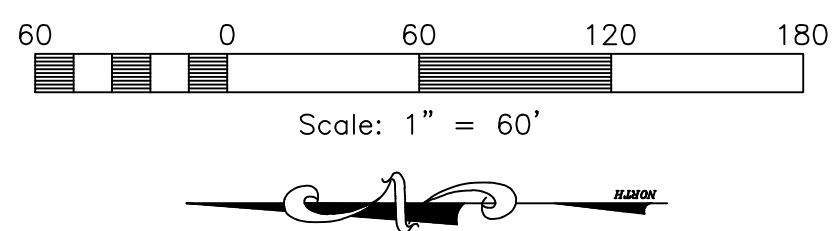
Should this be a bigger ROW?

Who owns parcel A?

to be filled/relocated?

LEGEND

- = SECTION CORNER
- = WITNESS CORNER
- = SET 5/8" X 24" REBAR AND PLASTIC CAP STAMPED "REEVE & ASSOCIATES"
- = STREET CENTERLINE MONUMENT
- = BOUNDARY LINE
- = LOT LINE
- = ADJOINING PROPERTY
- = EASEMENTS
- = SECTION/MONUMENT TIE LINE
- = ROAD CENTERLINE



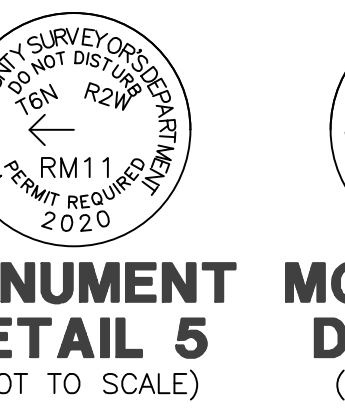
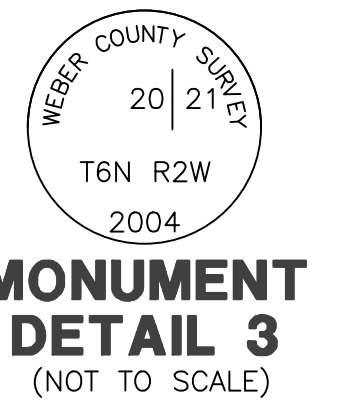
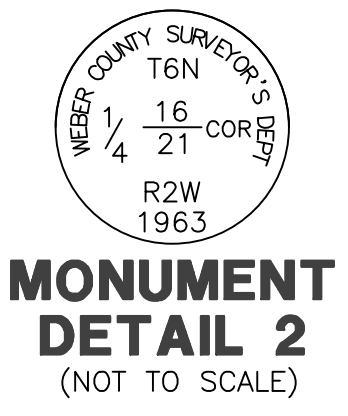
WEST QUARTER CORNER OF SECTION 21, TOWNSHIP 6 NORTH, RANGE 2 WEST, SALT LAKE BASE AND MERIDIAN, U.S. SURVEY (FOUND BRASS CAP MONUMENT) SEE MONUMENT DETAIL 3

N00°30'34\" E 2632.62' (CALC'D)
S00°30'47\" W 2632.67' (W.C.S.)

SOUTHWEST CORNER OF SECTION 21, TOWNSHIP 6 NORTH, RANGE 2 WEST, SALT LAKE BASE AND MERIDIAN, U.S. SURVEY (CALC'D NOT FOUND)

WITNESS CORNER TO THE SOUTHWEST CORNER OF SECTION 21, TOWNSHIP 6 NORTH, RANGE 2 WEST, SALT LAKE BASE AND MERIDIAN, U.S. SURVEY (FOUND BRASS CAP MONUMENT) SEE MONUMENT DETAIL 5

WITNESS CORNER TO THE SOUTHWEST CORNER OF SECTION 21, TOWNSHIP 6 NORTH, RANGE 2 WEST, SALT LAKE BASE AND MERIDIAN, U.S. SURVEY (FOUND BRASS CAP MONUMENT) SEE MONUMENT DETAIL 6



5160 S 1500 W, RIVERDALE, UTAH 84405
TEL: (801) 621-3100 FAX: (801) 621-2666 www.reeve.co

Project Info.

Surveyor: T. HATCH

Designer: N. ANDERSON

Begin Date: 4-3-2023

Name: ANSEMI ACRES SUBD. PHASE 1

Number: 7152-19

Revision:

Scale: 1\" = 60\"

Checked:

Weber County Recorder

Entry No. _____ Fee Paid _____

At _____ Filed For Record _____

Of The Official Records, Page _____

Recorded For: _____

Weber County Recorder _____

Deputy: _____