



# STAGECOACH ESTATES SUBDIVISION PHASE 3

PART OF THE SOUTHWEST QUARTER OF SECTION 21, TOWNSHIP 6 NORTH, RANGE 2 WEST, SALT LAKE BASE AND MERIDIAN, U.S. SURVEY  
WEBER COUNTY, UTAH  
JANUARY, 2024

NORTH QUARTER CORNER OF SECTION 21, TOWNSHIP 6 NORTH, RANGE 2 WEST, SALT LAKE BASE AND MERIDIAN, U.S. SURVEY (FOUND 3" BRASS CAP MONUMENT 5' BELOW SURFACE IN GOOD CONDITION DATED 1983) SEE MONUMENT DETAIL 1

WEST QUARTER CORNER OF SECTION 21, TOWNSHIP 6 NORTH, RANGE 2 WEST, SALT LAKE BASE AND MERIDIAN, U.S. SURVEY (FOUND 3" BRASS CAP MONUMENT 6' BELOW SURFACE IN GOOD CONDITION DATED 2017) SEE MONUMENT DETAIL 2

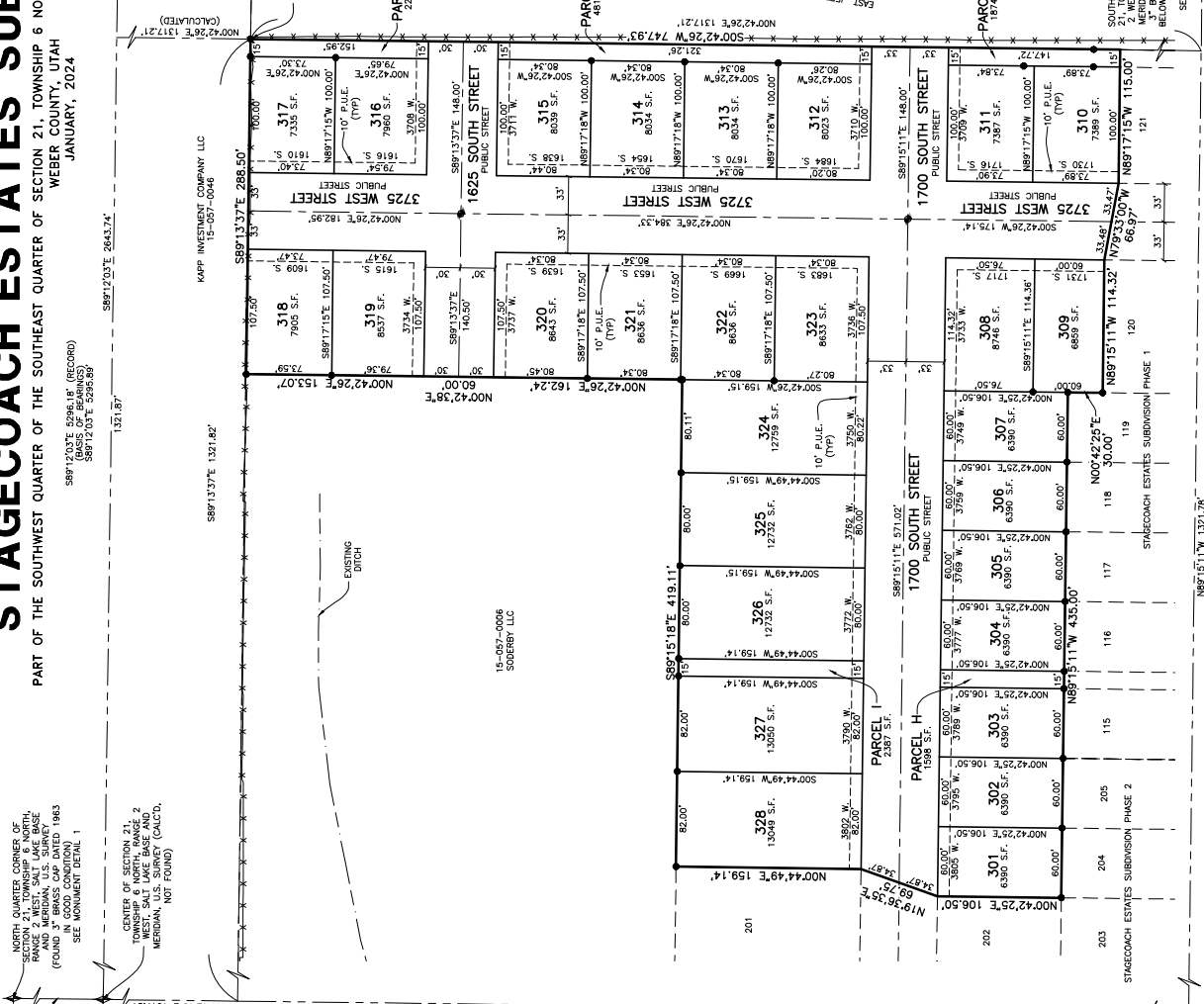
2662.4'

500°42'26"W 2608.83' (RECORD)  
500°42'18"W 2607.01'

EAST QUARTER CORNER OF SECTION 21, TOWNSHIP 6 NORTH, RANGE 2 WEST, SALT LAKE BASE AND MERIDIAN, U.S. SURVEY (FOUND 3" BRASS CAP MONUMENT 6' BELOW SURFACE IN GOOD CONDITION DATED 2017) SEE MONUMENT DETAIL 3

1321.87'

589°12'03"E 5908.41' (RECORD)  
589°12'03"E 5295.89'

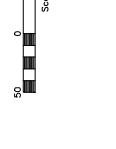
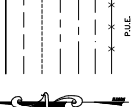
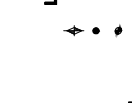


SOUTH QUARTER CORNER OF SECTION 21, TOWNSHIP 6 NORTH, RANGE 2 WEST, SALT LAKE BASE AND MERIDIAN, U.S. SURVEY (FOUND 3" BRASS CAP MONUMENT 5' BELOW SURFACE IN GOOD CONDITION) SEE MONUMENT DETAIL 5

500°42'18"E 1317.81'

589°15'11"E 571.02'

589°15'11"W 1321.78'



**Project Info**

Surveyor: J. FELT

Design: N. ANDERSON

Begin Date: 3-14-2023

Book: STAGECOACH ESTATES SUBDIVISION PHASE 3

Number: 15-05-0068-1-E-6

Scale: 1" = 50'

Checker: \_\_\_\_\_

**Weber County Recorder**

Entry No. \_\_\_\_\_

And Recorded In Book \_\_\_\_\_

Of The Official Records, Page \_\_\_\_\_

Recorded For: \_\_\_\_\_

**IRA**

**Reeve & Associates, Inc.**

1607 9th Street, Suite 200, Ogden, UT 84401

Phone: (801) 241-0338 Fax: (801) 241-0348