

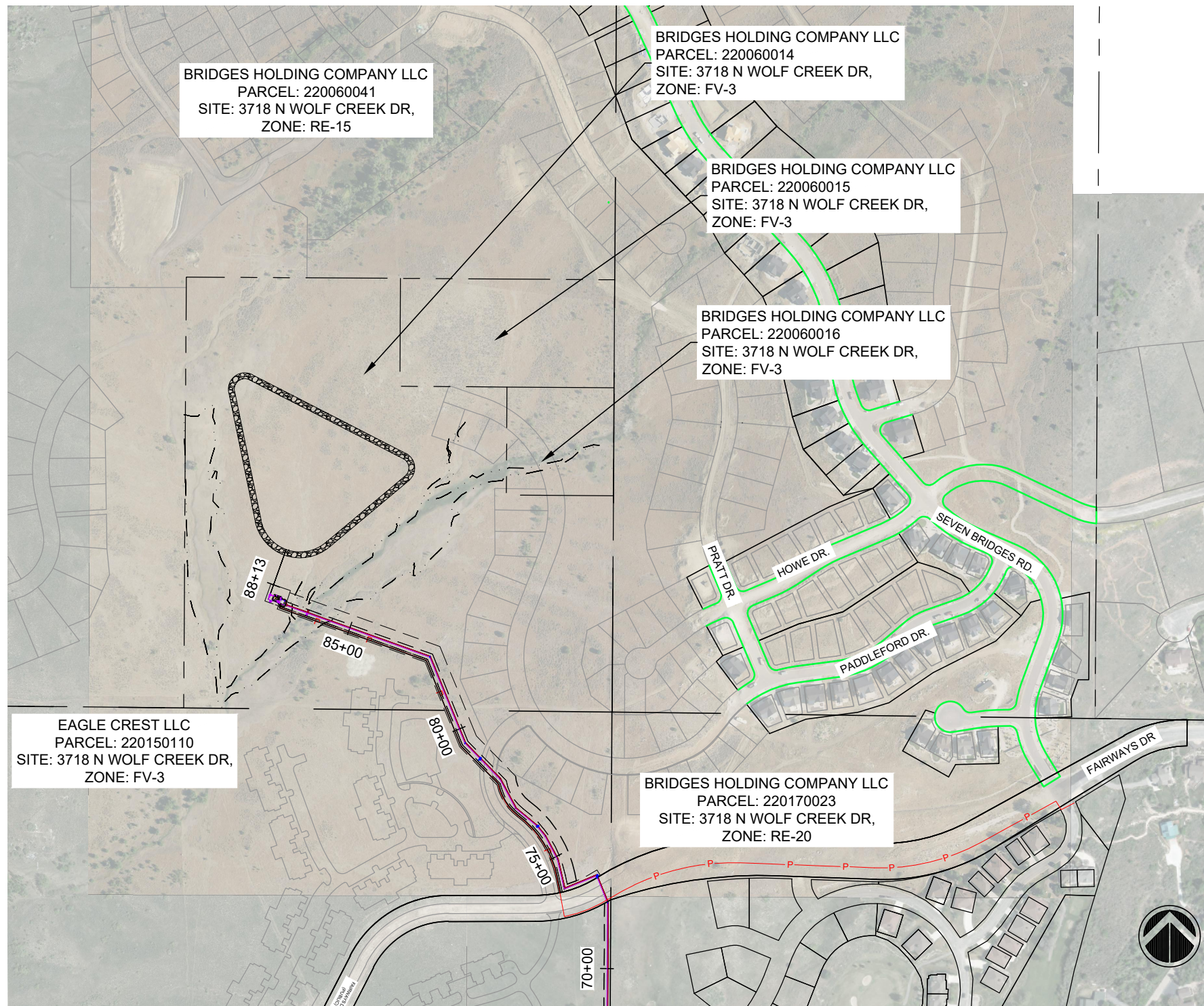
REUSE PROJECT

SCHEDULE C UPPER PUMP STATION VICINITY MAP

WOLF CREEK WATER AND SEWER IMPROVEMENT DISTRICT - WEBER, UTAH

LOCATION MAP

JANUARY 2024



SHEET INDEX:

CIVIL	
UPS1	COVER SHEET
UPS2	OVERVIEW
UPS3	SITE PLAN
UPP1	PUMP STATION DETAILS
UPP2	PUMP STATION DETAILS
UPP3	PUMP STATION DETAILS

ELECTRICAL
XX
XX



ENGINEER:
GARDNER ENGINEERING
DAN WHITE
1580 S 2100 W
WEST HAVEN, UTAH 84401
801-476-0202

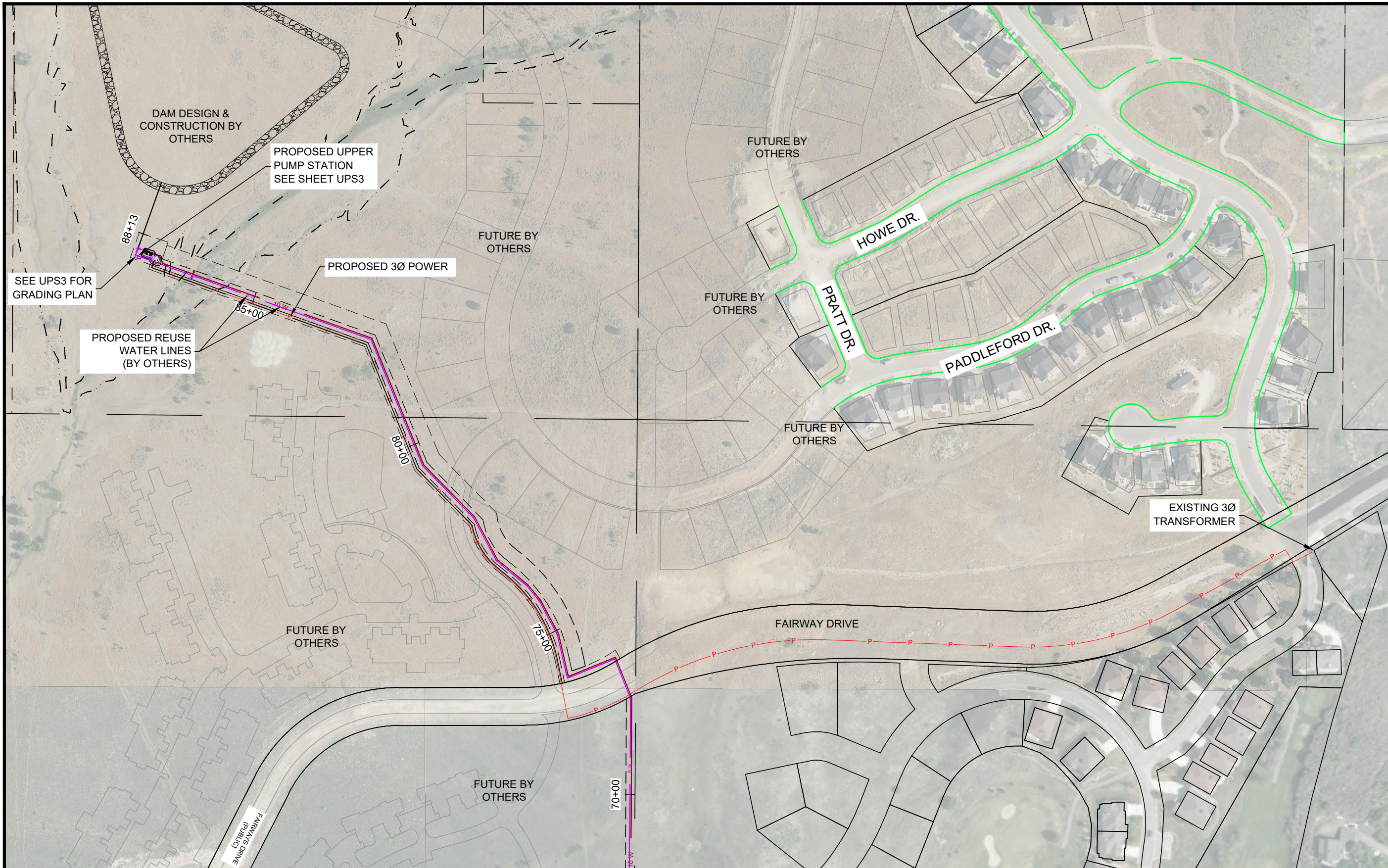
PREPARED FOR:

WOLF CREEK WATER AND SEWER
IMPROVEMENT DISTRICT

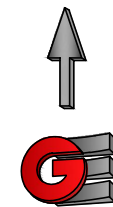
REUSE PROJECT
PRELIMINARY SUBMITTAL

UPS1

R:\2319 - WOLF CREEK WATER AND SEWER\2302 - REUSE PIPELINE\DESIGN\DWG\UPS - REUSE PLAN SET 2023_11_27.DWG



--- BOUNDARY LINE



Scale in Feet
1" = 200'

Revisions		Date	Description

Date:	1-9-24
Scale:	1" = 200'
Designed:	DW
Drafted:	PCA
Checked:	DW

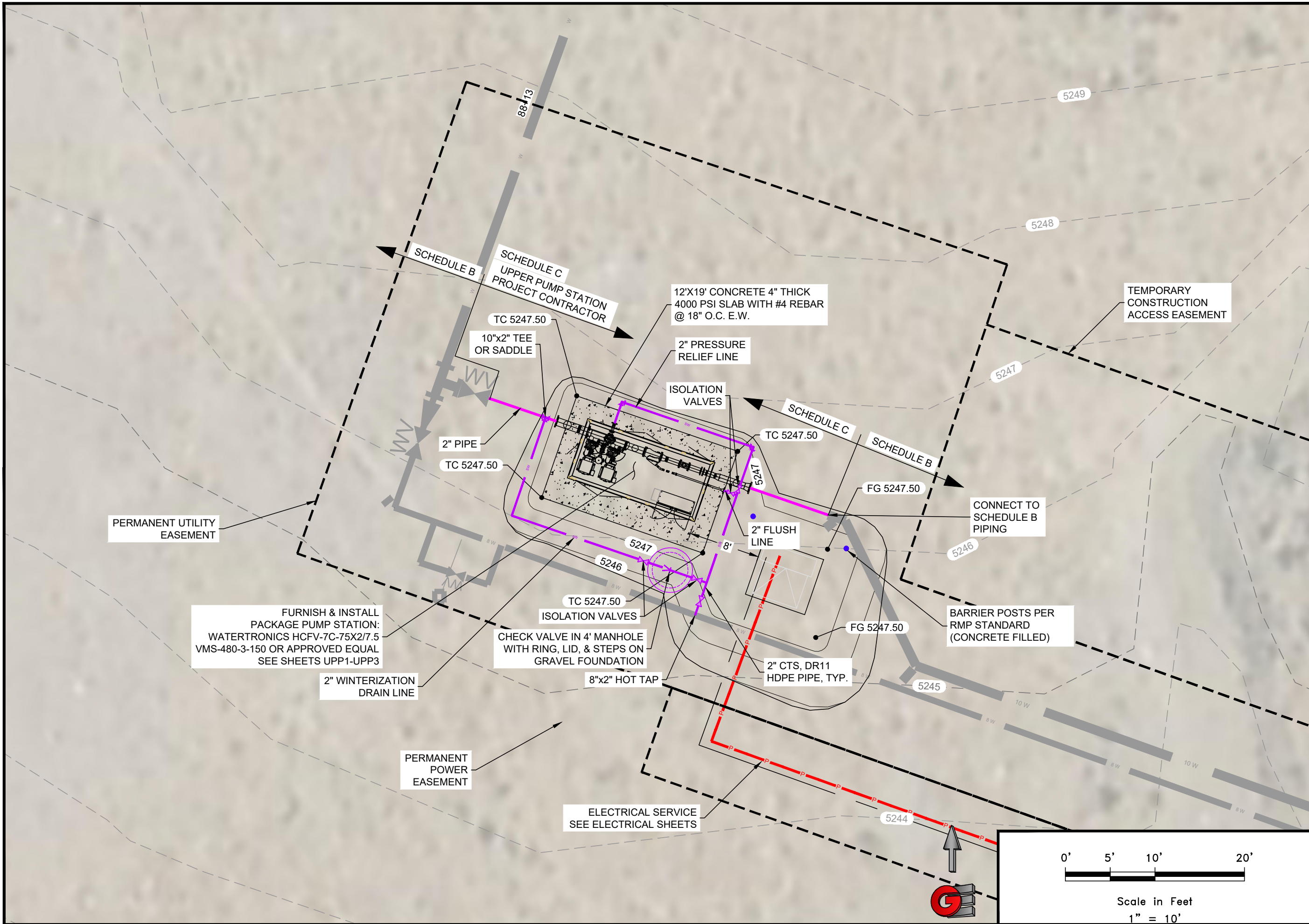
WOLF CREEK WATER AND SEWER ID,
REUSE PROJECT
UPPER PUMP STATION
OVERVIEW

GARDNER ENGINEERING
 CIVIL - LAND PLANNING
 MUNICIPAL - LAND SURVEYING
 1801 W. 2100S, WEST HAVEN, UT 84401
 P 801.476.0202 F 801.476.0066



UPS2

R:\2319 - WOLF CREEK WATER AND SEWER\2302 - REUSE PIPELINE\DESIGN\DWG\UPS - REUSE PLAN SET 2023_11_27.DWG



Revisions		Date	Description

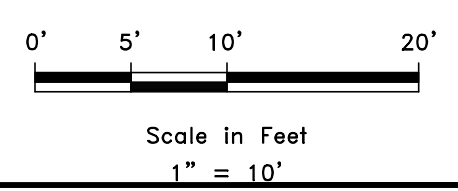
Date: 1-9-24
 Scale: 1" = 10'
 Designed: DW
 Drafted: PCA
 Checked: DW

WOLF CREEK WATER AND SEWER ID,
 REUSE PROJECT
 UPPER PUMP STATION
 SITE PLAN

GARDNER ENGINEERING
 CIVIL - LAND PLANNING
 MUNICIPAL - LAND SURVEYING
 180 W. 2100 S. WEST HAVEN, UT 84401
 P 801.476.0202 F 801.476.0066



UPS3



R:\2319 - WOLF CREEK WATER AND SEWER\2302 - REUSE PIPELINE DESIGN\DWG\UPS - REUSE PLAN SET 2023_11_27.DWG

PUMP STATION SPECIFICATIONS:
 NAME: WOLF CREEK GC
 STATION MODEL:
 HCFV-7C-75X2/7.5VMS-480-3-1000-150
 STATION TOTAL PERFORMANCE:
 1000 GPM @ 150 PSI
 FLOODED

PUMP HORSEPOWER:
 SUSTAIN PUMP: 7.5HP
 PUMP NO.1-2: 75 HP
 CHECK VALVE SIZE
 SUSTAIN: 2"
 PUMP NO.1-2: 5"
ISOLATION VALVE SIZES:
 SUSTAIN PUMP: 5"
 PUMP NO.1-2: 5"

DISCHARGE ISOLATION VALVE: 6"
 RELIEF VALVE SIZE: 3"
 PUMP STATION DISCONNECT: 400 AMP

POWER REQUIREMENTS:
 480V, 60 HZ, 3 PH, 198 FLA

EXHAUST FAN REQ'D FOR BUILDING:
 2550 CFM

INTAKE/SUCTION CONNECTION: ... 10" FL
 DISCHARGE CONNECTION: 10" FL
 NOMINAL PIPE SIZE: N/A
 ACTUAL O.D.: N/A
 TYPE:

DROP PIPE COVER: 60" DW 1/9/24

PLEASE VERIFY ALL INFO WITH
 YOUR INITIALS AND DATE

INITIAL	DATE
DW	1/9/24
DW	1/9/24
DW	1/9/24

Pump station shall be provided with the following options per Watertronics quote Wolf Creek GC HC BoosterUT_230804Q1 (See quote for full station purchase specs)

230-0000004 Filter
 VAF-V1000 - 8" Flange, 1200 GPM, 300 Micron

900-0000001 Composite Station Enclosure
 120 x 96 Inches

910-0000008 Ship Loose Disconnect
 400A Fused NEMA 3R

PLEASE USE THE SPACE BELOW FOR ANY ADDITIONAL COMMENTS:

Purchasing/installing contractor shall be entirely responsible for electrical and hydraulic connections, a fully and properly functioning pump station and providing 1 full year of communications, which contract(s) shall be assumable, transferable and renewable by the Owner, at the Owner's discretion.

- APPROVED AS SUBMITTED
- APPROVED AS NOTED
- REVISE AND RESUBMIT

REVIEWED BY: _____
 NAME: Dan White
APPROVED
 DATE: 01/09/2024

DIMENSIONS AND SIZES OF EXISTING STRUCTURES, AND/OR COMPONENTS MUST BE VERIFIED TO WATERTRONICS BEFORE STATION CONSTRUCTION BEGINS.

UNLESS SPECIFIED BY THE CUSTOMER, PUMP HOUSE/CONCRETE SLAB DIMENSIONS ARE RECOMMENDED MINIMUMS FOR NEC AND SERVICE CLEARANCE, AND ARE FOR ILLUSTRATION PURPOSES ONLY. PROJECT MANAGER SHALL BE CONSULTED ON FINAL DESIGN.

THE PUMP STATION PROPOSED HEREIN IS DESIGNED TO BE PLACED IN A PUMP HOUSE FOR PROTECTION FROM THE ENVIRONMENT. IF A PUMP HOUSE IS NOT USED, WATERTRONICS MUST BE NOTIFIED AT TIME OF QUOTATION SO SPECIAL PROVISIONS CAN BE MADE.



PHONE: 1-262-367-5000
 FAX: 1-262-367-5551

SHEET 1 OF 3 SHEETS

DRAWING NO. PRHC11102 8/4/2023
 R1 1/9/2024

WOLF CREEK WATER AND SEWER ID,
 REUSE PROJECT
 UPPER PUMP STATION
 PUMP STATION DETAILS

GARDNER ENGINEERING
 CIVIL - LAND PLANNING
 MUNICIPAL - LAND SURVEYING
180W 2100S, WEST HAVEN, UT 84401
 P 801.476.0202 F 801.476.0066

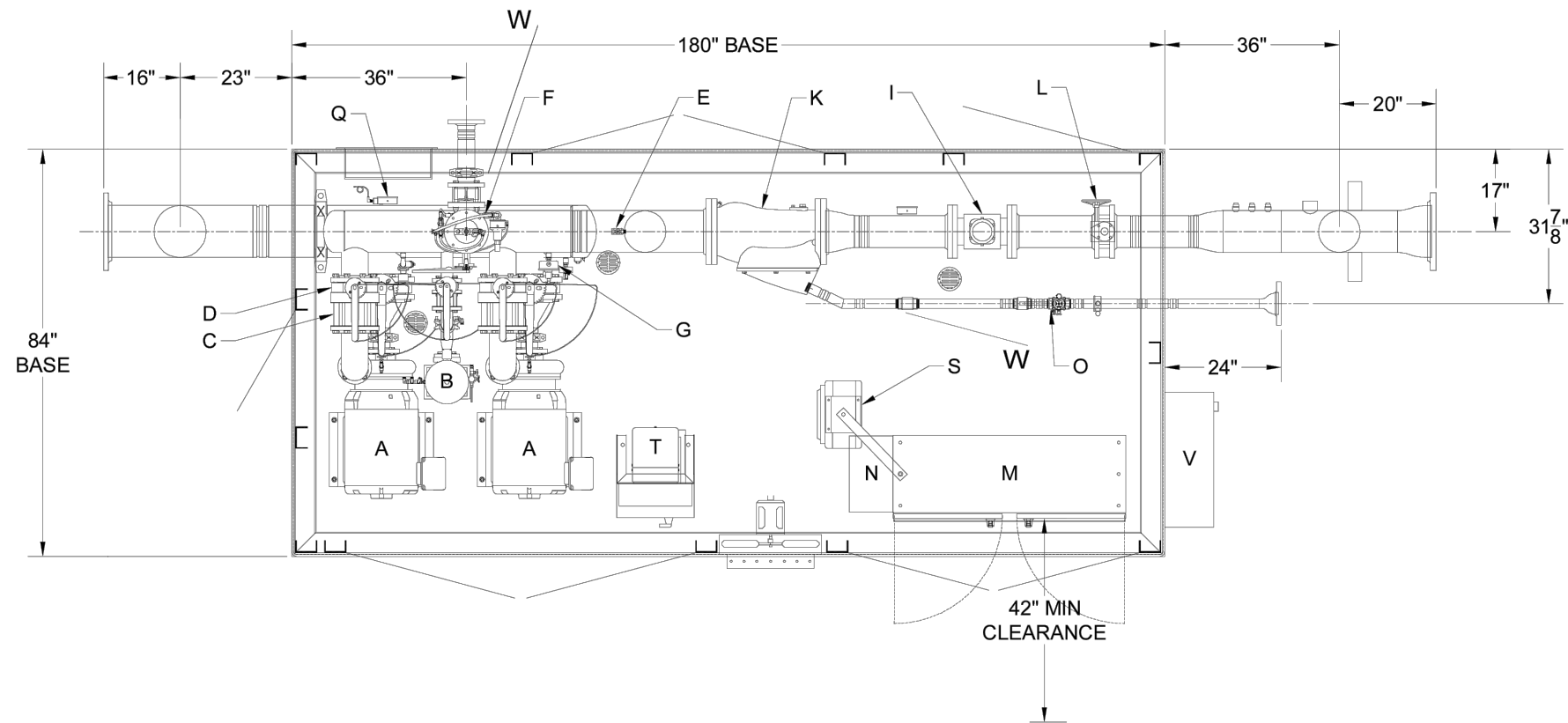


UPP1

Revisions		Date	Description

Date: 1-9-24	Scale: #####	Designed: DW	Drafted: PCA	Checked: DW
--------------	--------------	--------------	--------------	-------------

R:\2319 - WOLF CREEK WATER AND SEWER\2302 - REUSE PIPELINE\DESIGN\DWG\UPS - REUSE PLAN SET 2023_11_27.DWG



CONCEPT DRAWING ONLY
NOT TO BE USED FOR CONSTRUCTION

PLAN VIEW

[2022616]

NO.	DATE	BY	DESCRIPTION	CHK DATE	CHK BY
7					
6					
5					
4					
3					
2					
1	1/9/2024	--	ADD CHECK VALVE TO PRV AND WYE FLUSH	---	---

DRAWN BY: MTM DATE: 8/4/2023
 CHECKED BY: CG DATE: 8/4/2023
 THIS DRAWING AND DESIGN, IS THE PROPERTY OF WATERTRONICS AND IS NOT TO BE REPRODUCED IN WHOLE OR PART, NOR EMPLOYED FOR ANY PURPOSE OTHER THAN SPECIFICALLY PERMITTED IN WRITING BY WATERTRONICS. THIS DRAWING LOANED AND SUBJECT TO RETURN ON DEMAND

TITLE:
 WOLF CREEK GC
 HCFV-7C-75X2/7.5VMS-480-3-1000-150



SCALE: NTS SHEET 2 OF 3 SHEETS
 JOB NO.: --- DRAWING NO. PRHC11102

- STATION COMPONENTS:
- A 75HP PUMP AND MOTOR W/ WINDING HEATERS
 - B 7.5HP SUSTAIN PUMP AND MOTOR
 - C CHECK VALVE
 - D PUMP ISOLATION VALVE W/ EBV
 - E DRAIN
 - F 3" PRESSURE RELIEF VALVE
 - G DISCHARGE PRESSURE TRANSDUCER W/ GAUGE
 - H PAINTED STEEL BASE (SANDSTONE)
 - I 6" ELECTROMAGNETIC FLOW METER
 - J N/A
 - K 8" WYE STRAINER W/ SOLENOID AUTOFLUSH
 - L 6" STATION ISOLATION VALVE
 - M CONTROL CABINET
 - N HEAT EXCHANGER (AC WITHOUT ENCLOSURE)
 - O INLINE CHECK VALVE
 - P 6" X 10" FL DISCHARGE DROP PIPE
 - Q INTAKE PRESSURE TRANSDUCER W/ GAUGE
 - R 10" X 10" FL INTAKE DROP PIPE
 - S 5KW STATION HEATER
 - T 3KVA TRANSFORMER & LOAD CENTER
 - U COMPOSITE STATION ENCLOSURE (OPTIONAL)
 - V 400AMP EXTERNAL DISCONNECT (OPTIONAL)
 - W Check Valves

CONCEPT DRAWING ADDITIONAL INFORMATION

WATERVISION CLOUD
 HINGED WINDOW KIT

Revisions	Date	Description

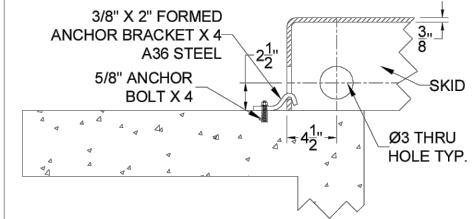
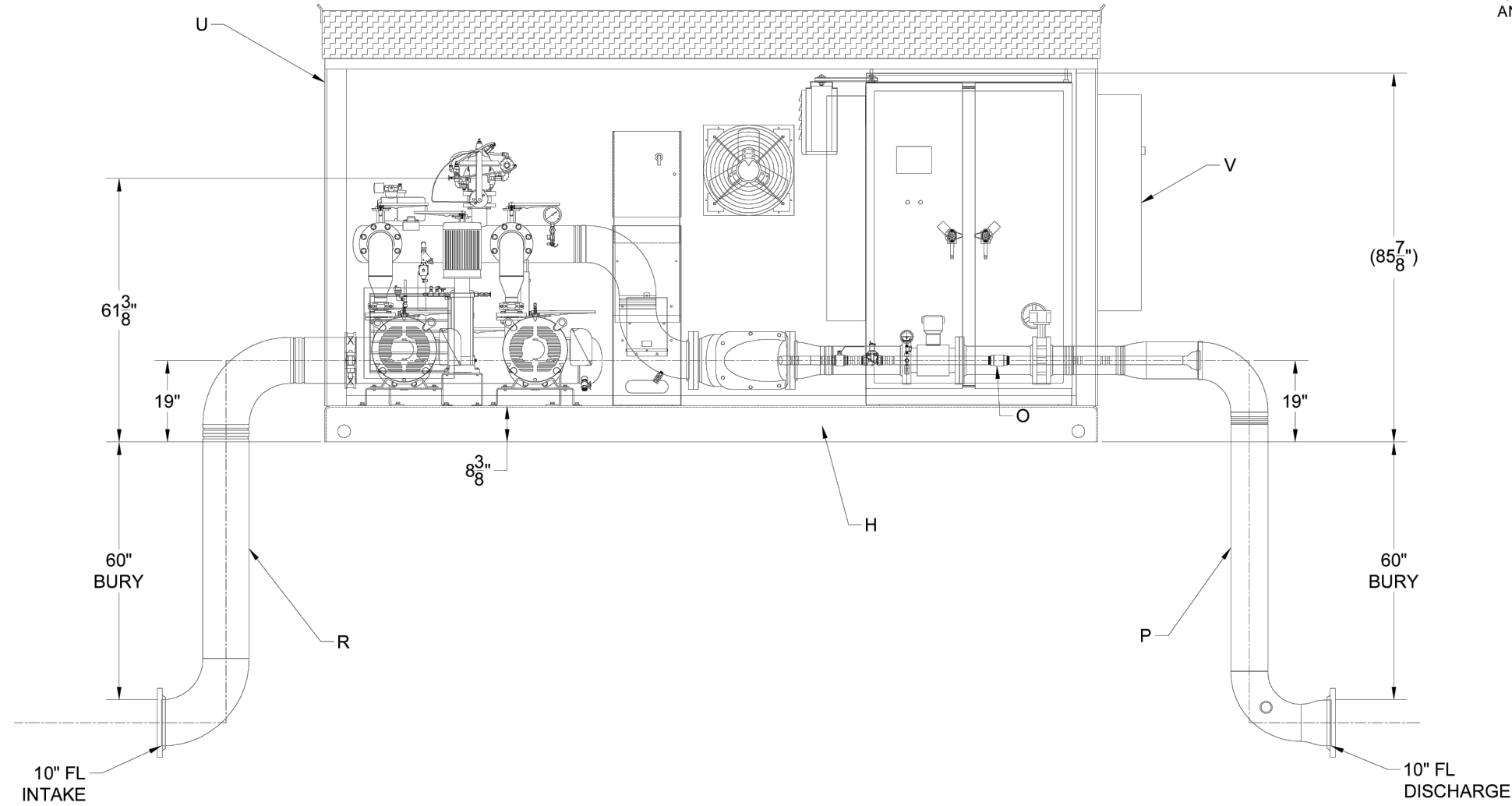
Date: 1-9-24	Scale: #####	Designed: DW	Drafted: PCA	Checked: DW
--------------	--------------	--------------	--------------	-------------

WOLF CREEK WATER AND SEWER I.D.
 REUSE PROJECT
 UPPER PUMP STATION
 PUMP STATION DETAILS

GARDNER ENGINEERING
 CIVIL ■ LAND PLANNING
 MUNICIPAL ■ LAND SURVEYING
 180W 2100S, WEST HAVEN, UT 84401
 P 801.476.0202 F 801.476.0066

UPP2

R:\2319 - WOLF CREEK WATER AND SEWER\2302 - REUSE PIPELINE\DESIGN\DWG\UPS - REUSE PLAN SET 2023_11_27.DWG




LIFTING HOLE/ ANCHOR DETAIL
(HOLES AT ALL CORNERS - 8 TOTAL
ANCHORS AT 4 OPPOSITE CORNERS)

ELEVATION VIEW

NO.	DATE	BY	DESCRIPTION	CHK DATE	CHK BY
7					
6					
5					
4					
3					
2					
1	1/9/2024	MTM	ADD CHECK VALVE TO PRV AND WYE FLUSH	---	---

DRAWN BY: MTM DATE: 8/4/2023
 CHECKED BY: CG DATE: 8/4/2023
 THIS DRAWING AND DESIGN, IS THE PROPERTY OF WATERTRONICS AND IS NOT TO BE REPRODUCED IN WHOLE OR PART, NOR EMPLOYED FOR ANY PURPOSE OTHER THAN SPECIFICALLY PERMITTED IN WRITING BY WATERTRONICS. THIS DRAWING LOANED AND SUBJECT TO RETURN ON DEMAND

TITLE: WOLF CREEK GC
 HCFV-7C-75X2/7.5VMS-480-3-1000-150

 SCALE: NTS SHEET 3 OF 3 SHEETS
 JOB NO.: --- DRAWING NO. PRHC11102

Revisions	Date	Description

Date: 1-9-24	Scale: #####	Designed: DW	Drafted: PCA	Checked: DW
--------------	--------------	--------------	--------------	-------------

WOLF CREEK WATER AND SEWER I.D.
 REUSE PROJECT
 UPPER PUMP STATION
 PUMP STATION DETAILS

GARDNER ENGINEERING
 CIVIL • LAND PLANNING
 MUNICIPAL • LAND SURVEYING
 180W 2100S, WEST HAVEN, UT 84401
 P 801.476.0202 F 801.476.0066



UPP3