



AMERICA FIRST
OGDEN
MARATHON

RACE DAY PARKING

COLOR LEGEND

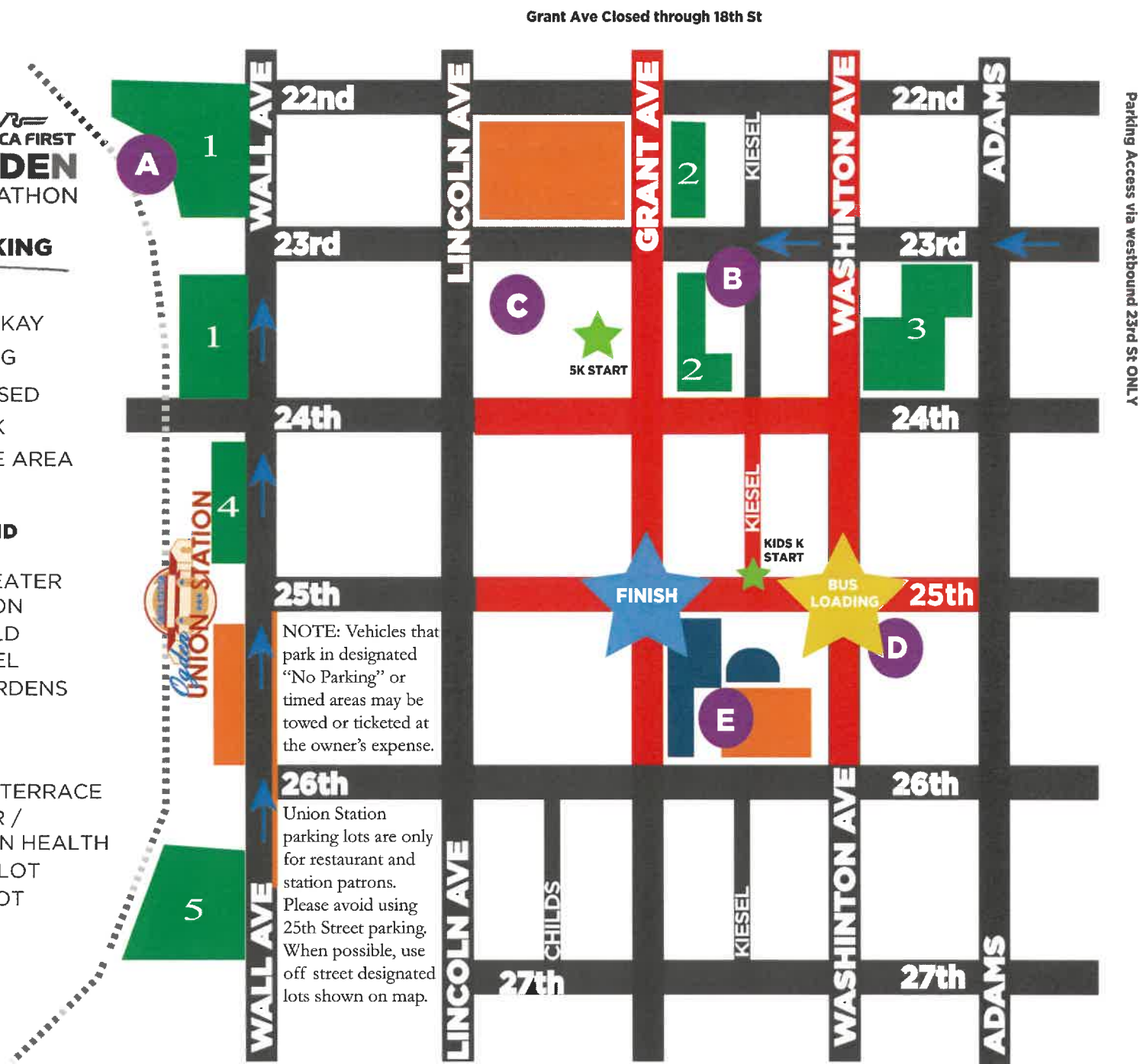
- PARKING OKAY
- NO PARKING
- ROAD CLOSED
- LANDMARK
- FINISH LINE AREA

LANDMARK LEGEND

- A - TRAX STATION
- B - MEGAPLEX THEATER @ THE JUNCTION
- C - LINDQUIST FIELD
- D - BIGELOW HOTEL
- E - MUNICIPAL GARDENS

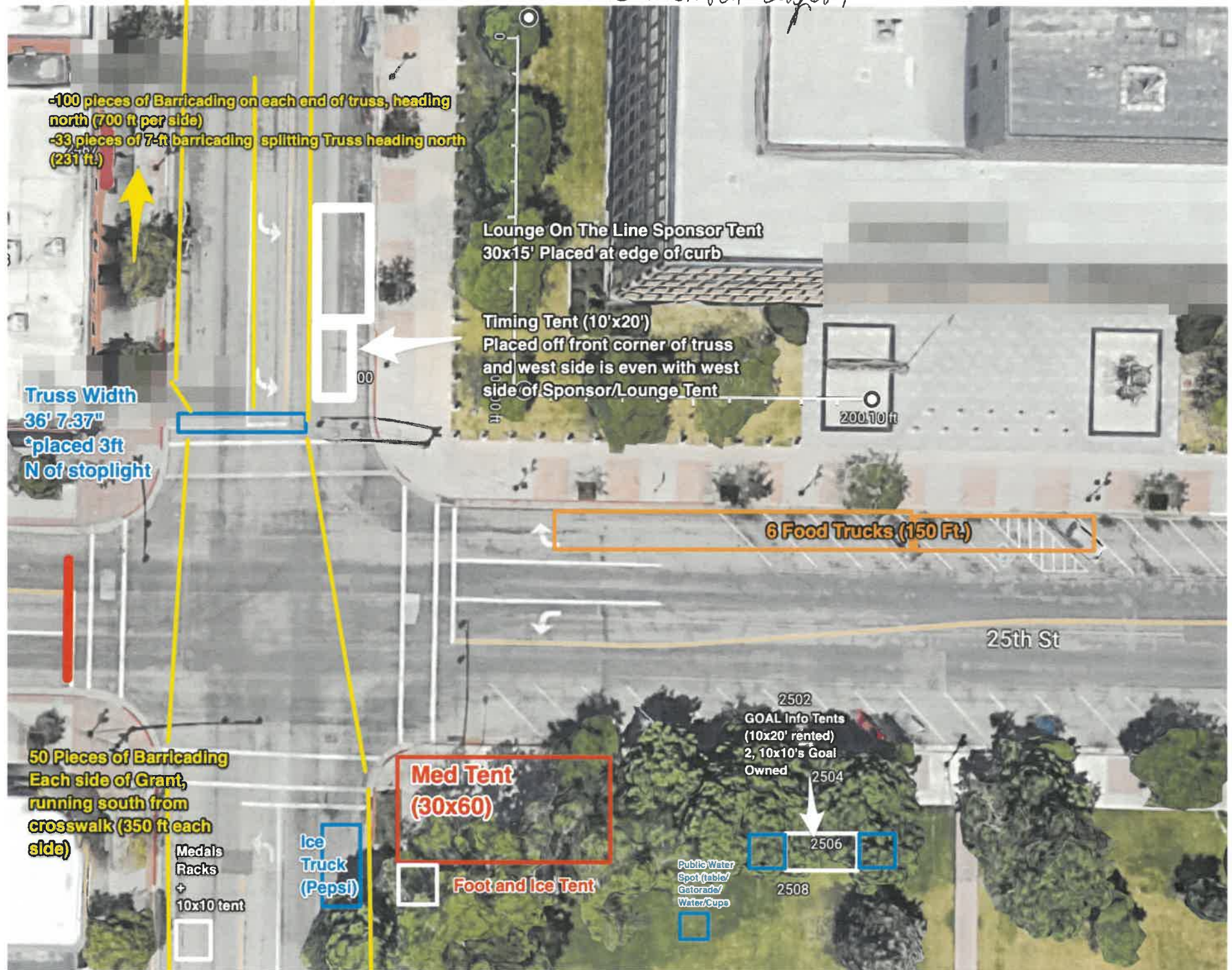
PARKING LOTS

- 1 - UTA TRAX
- 2 - THE JUNCTION TERRACE
- 3 - WEBER CENTER / WEBER MORGAN HEALTH
- 4 - UNION NORTH LOT
- 5 - EMPTY OPEN LOT



Take 31st St exit off Hwy I-15 and head north on Wall Ave for parking

Finish Line Festival Layout



Finish Line Festival Layout

