



BE E  
L=61.36

L=178.22',  
R=168.00'

L=275.47'  
L=226.28'

109.14' 4650 N

31.56'  
21.98'

4622 N  
221440026  
25393 SQ FT

JASON C LEWIS  
& WF SHELBY

9.58'  
150.81'  
9.29'

KENWOOD JOHNSON  
& WF CHARLOTTE  
(221440031)  
1394 SQ FT

280.36'  
KENWOOD  
JOHNSON & WF  
CHARLOTTE

221440027  
26819 SQ. FT.

249.03'  
S11°30'00"E

CORLYN C  
RICH  
TRUST

221440028  
26717 SQ. FT.

L=112.54'  
3221 E

230.57'

110.16'  
4604 N  
221440025  
26720 SQ. FT.

TERRELL BENTON  
PORTER ETAL TR

34

91.45'  
S73°30'00"W

36

112.51'  
203.96'

1.34'

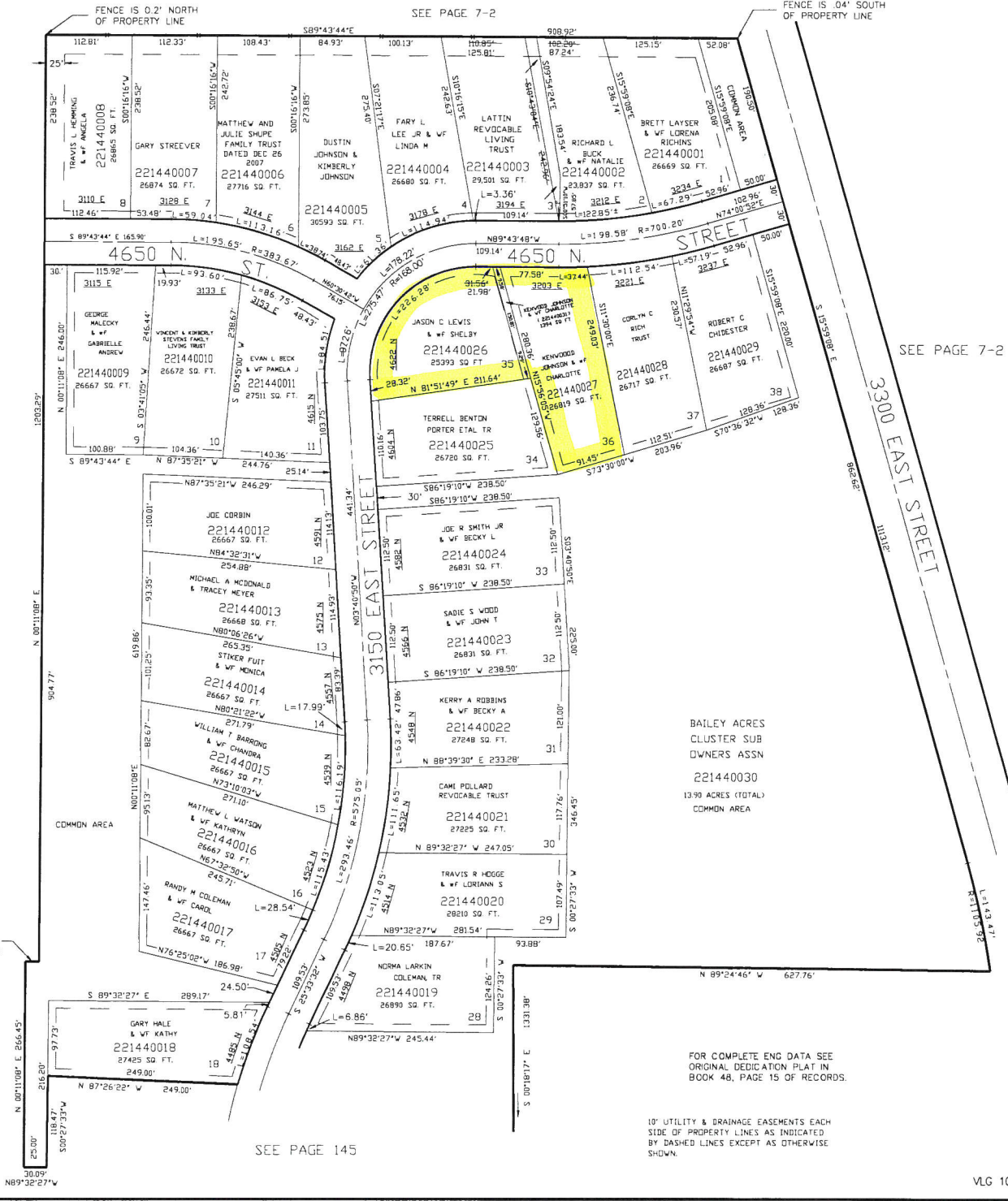
30'

S86°19'10"W 238.50'  
S86°19'10"W 238.50'

PART OF THE S.W. 1/4, OF SEC. 17, T.7N., R.1E., S.L.B. & M.  
**BAILEY ACRES CLUSTER SUBDIVISION PHASE 1**

TAXING UNIT: 36

IN WEBER COUNTY SCALE 1" = 100'



SEE PAGE 7-2

SEE PAGE 7-2

BAILEY ACRES  
 CLUSTER SUB  
 OWNERS ASSN  
 221440030  
 13.90 ACRES (TOTAL)  
 COMMON AREA

FOR COMPLETE ENG DATA SEE  
 ORIGINAL DEDICATION PLAT IN  
 BOOK 48, PAGE 15 OF RECORDS.

10' UTILITY & DRAINAGE EASEMENTS EACH  
 SIDE OF PROPERTY LINES AS INDICATED  
 BY DASHED LINES EXCEPT AS OTHERWISE  
 SHOWN.

SEE PAGE 145