

ANSELMI ACRES SUBDIVISION PHASE 2

DEVELOPER: PART OF THE SOUTHWEST QUARTER OF SECTION 21, TOWNSHIP 6 NORTH, RANGE 2 WEST, SALT LAKE BASE & MERIDIAN, U.S. SURVEY

STEWART DEVELOPMENT
SKY HAZLEHURST
1708 EAST 5550 SOUTH
SOUTH OGDEN, UT. 74405
(801) 837-2020

WEBER COUNTY, UTAH
DECEMBER, 2023

BASIS OF BEARINGS

A LINE BEARING SOUTH 89°12'03" EAST BETWEEN SAID WEST QUARTER CORNER AND EAST QUARTER OF SAID SECTION 21 WAS USED AS THE BASIS OF BEARINGS FOR THIS SURVEY.

NARRATIVE

THE PURPOSE OF THIS PLAT IS TO DIVIDE THE BELOW DESCRIBED PROPERTY INTO LOTS AND STREETS AS SHOWN. ALL BOUNDARY CORNERS AND REAR LOT CORNERS WERE SET WITH A 5/8" X 24" REBAR AND PLASTIC CAP STAMPED "REEVE & ASSOCIATES". BRASS CAP MONUMENTS WERE FOUND FOR THE WEST QUARTER CORNER, EAST QUARTER CORNER, SOUTH QUARTER CORNER, SOUTHEAST CORNER AND NORTH QUARTER CORNER OF SECTION 21, TOWNSHIP 6 NORTH, RANGE 2 WEST, SALT LAKE BASE AND MERIDIAN, U.S. SURVEY. BRASS CAP WITNESS MONUMENTS WERE FOUND FOR THE SOUTHWEST CORNER OF SAID SECTION 21. A LINE BEARING SOUTH 89°12'03" EAST BETWEEN SAID WEST QUARTER CORNER AND EAST QUARTER OF SAID SECTION 21 WAS USED AS THE BASIS OF BEARINGS FOR THIS SURVEY. THE BOUNDARY WAS ESTABLISHED BY INFORMATION OF RECORD AND FOUND EVIDENCE OF OCCUPATION ON THE GROUND. THE NORTH LINE OF THE SUBJECT PROPERTY WAS ESTABLISHED BY QUARTER SECTION LINE, THE EAST LINE OF THE PROPERTY WAS ESTABLISHED BY LINES OF ALIQUOT SUBDIVISION OF THE QUARTER SECTION, AND THE SOUTH AND WEST LINES WERE ESTABLISHED BY SUBDIVISION AND DEEDS OF RECORD. THE 33 FOOT WIDE HALF WIDTH FOR 1400 SOUTH STREET WAS ESTABLISHED BY INFORMATION FROM DAYBREAK SUBDIVISION, WHICH, PER PLAT, WAS ESTABLISHED BY THE WEBER COUNTY SURVEYORS OFFICE.

NOTE: Phase 1 Needs to be recorded before or at same time as phase 2 or phase 2 has no access

BOUNDARY DESCRIPTION

PART OF THE SOUTHWEST QUARTER OF SECTION 21, TOWNSHIP 6 NORTH, RANGE 2 WEST, SALT LAKE BASE AND MERIDIAN, U.S. SURVEY, DESCRIBED AS FOLLOWS:

BEGINNING AT A POINT BEING 905.75 FEET SOUTH 00°30'34" WEST AND 577.43 FEET SOUTH 89°29'26" EAST FROM THE WEST QUARTER CORNER OF SAID SECTION 21; THENCE SOUTH 89°29'13" EAST 171.91 FEET TO THE WEST LINE OF LOT 114 OF ANSELMI ACRES SUBDIVISION PHASE 1; THENCE SOUTH 89°29'13" EAST 257.19 FEET; THENCE SOUTH 00°49'56" WEST 212.23 FEET; THENCE SOUTH 19°17'11" WEST 69.58 FEET; THENCE SOUTH 00°49'56" WEST 137.00 FEET; THENCE NORTH 89°10'04" WEST 155.72 FEET; THENCE NORTH 00°49'56" EAST 137.00 FEET; THENCE NORTH 89°10'04" WEST 77.90 FEET; THENCE NORTH 00°30'47" EAST 276.80 FEET TO THE POINT OF BEGINNING.

CONTAINING 91,767 SQUARE FEET OR 2.107 ACRES.

SETBACK NOTE

FRONT SETBACK: 20'
SIDE SETBACK: 5' & 10' INTERIOR/15' CORNER LOTS
REAR SETBACK: 30'

SOUTH QUARTER CORNER OF SECTION 21, TOWNSHIP 6 NORTH, RANGE 2 WEST, SALT LAKE BASE AND MERIDIAN, U.S. SURVEY (FOUND BRASS CAP MONUMENT 0.44' UNDER RING AND LID) SEE MONUMENT DETAIL 4

EAST QUARTER CORNER OF SECTION 21, TOWNSHIP 6 NORTH, RANGE 2 WEST, SALT LAKE BASE AND MERIDIAN, U.S. SURVEY (FOUND BRASS CAP MONUMENT 0.55' UNDER RING AND LID) SEE MONUMENT DETAIL 1

NORTH QUARTER CORNER OF SECTION 21, TOWNSHIP 6 NORTH, RANGE 2 WEST, SALT LAKE BASE AND MERIDIAN, U.S. SURVEY (FOUND BRASS CAP MONUMENT) SEE MONUMENT DETAIL 2

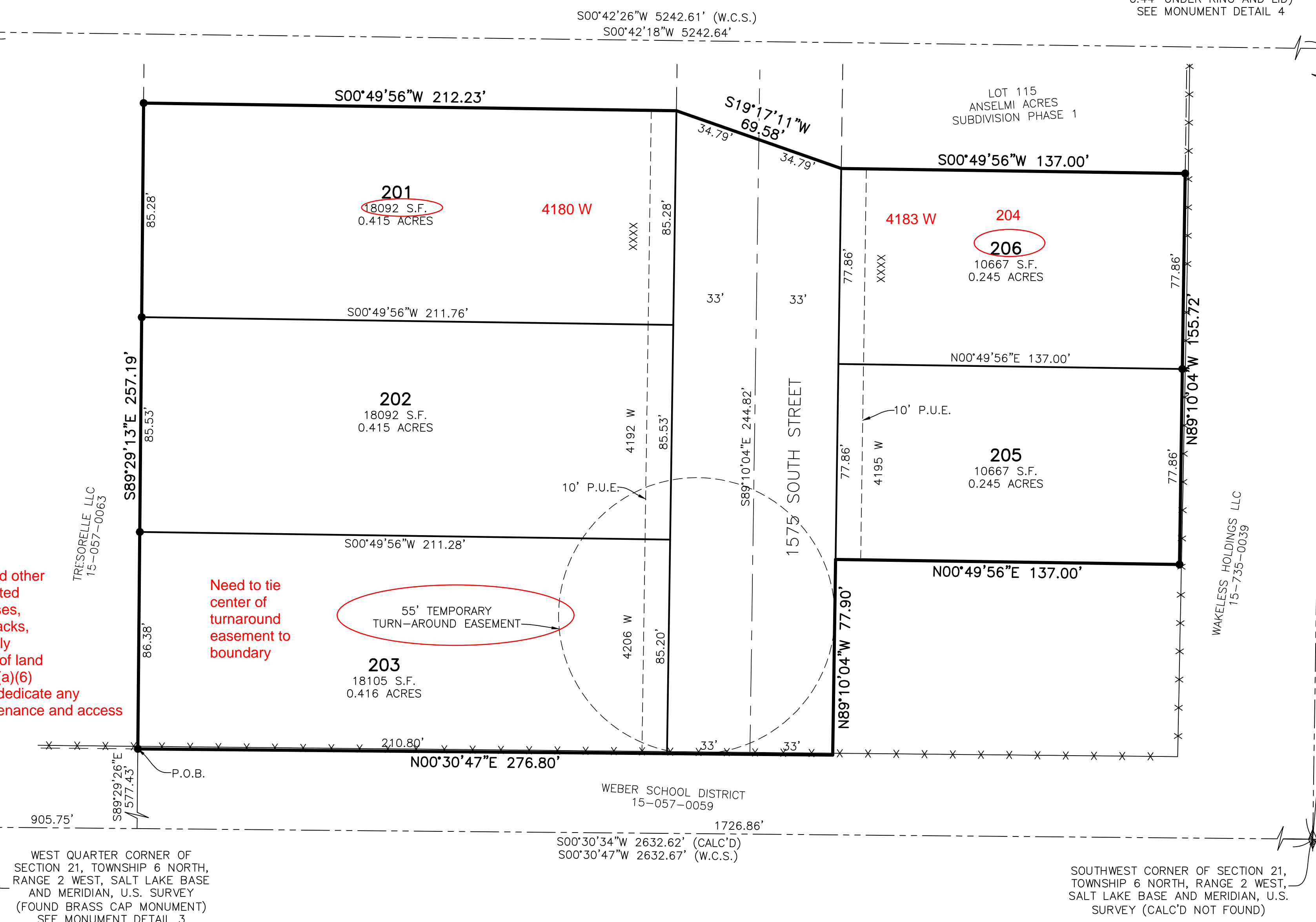
(BASIS OF BEARINGS 5296.18' MEASURED) S89°12'03"E 5295.89' W.C.S.

TRESORELLE LLC 15-057-0063

WAKELESS HOLDINGS LLC 15-735-0039

The existing location, widths, and other dimensions of all existing or platted land drains, culverts, watercourses, wetlands, streams corridor setbacks, flood plain within and immediately adjacent (within 30') to the tract of land to be subdivided. WCO 106-1-5(a)(6) Existing location of ditches and dedicate any easements as needed for maintenance and access

Need to tie center of turnaround easement to boundary

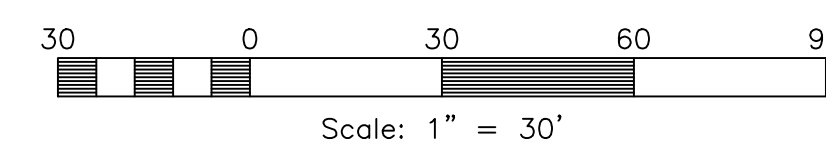


VICINITY MAP

NOT TO SCALE

LEGEND

- SECTION CORNER
- WITNESS CORNER
- SET 5/8" X 24" REBAR AND PLASTIC CAP STAMPED "REEVE & ASSOCIATES"
- BOUNDARY LINE
- LOT LINE
- ADJOINING PROPERTY
- EASEMENTS
- SECTION/MONUMENT TIE LINE
- ROAD CENTERLINE



TAYLOR WEST WATER DISTRICT

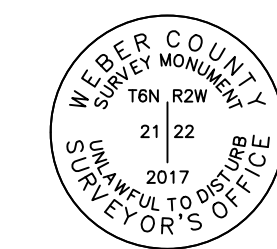
THIS IS TO CERTIFY THAT THIS SUBDIVISION PLAT WAS DULY APPROVED BY TAYLOR WEST WATER DISTRICT. SIGNED THIS ____ DAY OF _____, 20____.

TAYLOR WEST WATER DISTRICT

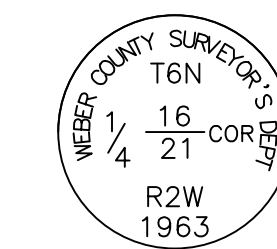
HOOPER IRRIGATION COMPANY

THIS IS TO CERTIFY THAT THIS SUBDIVISION PLAT WAS DULY APPROVED BY HOOPER IRRIGATION COMPANY. SIGNED THIS ____ DAY OF _____, 20____.

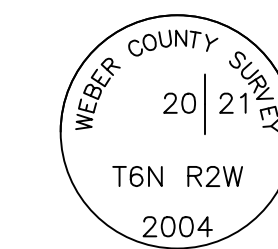
HOOPER IRRIGATION COMPANY



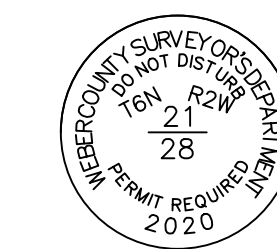
MONUMENT DETAIL 1 (NOT TO SCALE)



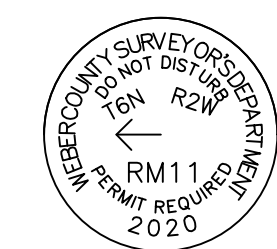
MONUMENT DETAIL 2 (NOT TO SCALE)



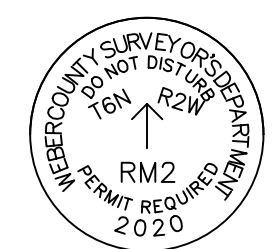
MONUMENT DETAIL 3 (NOT TO SCALE)



MONUMENT DETAIL 4 (NOT TO SCALE)



MONUMENT DETAIL 5 (NOT TO SCALE)



MONUMENT DETAIL 6 (NOT TO SCALE)

WITNESS CORNER TO THE SOUTHWEST CORNER OF SECTION 21, TOWNSHIP 6 NORTH, RANGE 2 WEST, SALT LAKE BASE AND MERIDIAN, U.S. SURVEY (FOUND BRASS CAP MONUMENT) SEE MONUMENT DETAIL 5

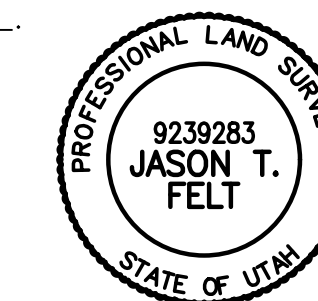
WITNESS CORNER TO THE SOUTHWEST CORNER OF SECTION 21, TOWNSHIP 6 NORTH, RANGE 2 WEST, SALT LAKE BASE AND MERIDIAN, U.S. SURVEY (FOUND BRASS CAP MONUMENT) SEE MONUMENT DETAIL 6

SURVEYOR'S CERTIFICATE

I, **JASON T. FELT**, DO HEREBY CERTIFY THAT I AM A PROFESSIONAL LAND SURVEYOR IN THE STATE OF UTAH IN ACCORDANCE WITH TITLE 58, CHAPTER 22, PROFESSIONAL ENGINEERS AND LAND SURVEYORS ACT; AND THAT I HAVE COMPLETED A SURVEY OF THE PROPERTY DESCRIBED ON THIS PLAT IN ACCORDANCE WITH SECTION 17-23-17 AND HAVE VERIFIED ALL MEASUREMENTS, AND HAVE PLACED MONUMENTS AS REPRESENTED ON THIS PLAT, AND THAT THIS PLAT OF ANSELMI ACRES SUBDIVISION PHASE 2 IN WEBER COUNTY, UTAH, HAS BEEN DRAWN CORRECTLY TO THE DESIGNATED SCALE AND IS A TRUE AND CORRECT REPRESENTATION OF THE HEREIN DESCRIBED LANDS INCLUDED IN SAID SUBDIVISION, BASED UPON DATA COMPILED FROM RECORDS IN THE WEBER COUNTY RECORDER'S OFFICE AND FROM SAID SURVEY MADE BY ME ON THE GROUND. I FURTHER CERTIFY THAT THE REQUIREMENTS OF ALL APPLICABLE STATUTES AND ORDINANCES OF WEBER COUNTY CONCERNING ZONING REQUIREMENTS REGARDING LOT MEASUREMENTS HAVE BEEN COMPLIED WITH.

SIGNED THIS ____ DAY OF _____, 20____.

9239283
UTAH LICENSE NUMBER



Temporary turn around easement will need to be dedicated

OWNERS DEDICATION AND CERTIFICATION

WE THE UNDERSIGNED OWNERS OF THE HEREIN DESCRIBED TRACT OF LAND, DO HEREBY SET APART AND SUBDIVIDE THE SAME INTO LOTS AND STREETS AS SHOWN ON THE PLAT AND NAME SAID TRACT ANSELMI ACRES SUBDIVISION PHASE 2, AND DO HEREBY DEDICATE TO PUBLIC USE ALL THOSE PARTS OR PORTIONS OF SAID TRACT OF LAND DESIGNATED AS STREETS, THE SAME TO BE USED AS PUBLIC THOROUGHFARES AND ALSO TO GRANT AND DEDICATE A PERPETUAL RIGHT AND EASEMENT OVER, UPON AND UNDER THE LANDS DESIGNATED HEREON AS PUBLIC UTILITY AND STORM DRAIN EASEMENTS, THE SAME TO BE USED FOR THE INSTALLATION MAINTENANCE AND OPERATION OF PUBLIC UTILITY SERVICE LINE, STORM DRAINAGE FACILITIES, IRRIGATION CANALS OR FOR THE PERPETUAL PRESERVATION OF WATER CHANNELS IN THEIR NATURAL STATE WHICHEVER IS APPLICABLE AS MAY BE AUTHORIZED BY THE GOVERNING AUTHORITY, WITH NO BUILDINGS OR STRUCTURES BEING ERRECTED WITHIN SUCH EASEMENTS AND ALSO DEDICATE THE INTERIM DETENTION BASIN TO THE DEVELOPER TO BE OWNED AND MAINTAINED BY THE SAME.

SIGNED THIS ____ DAY OF _____, 20____.

The ditch running along the east boundary looks like a main ditch with connections to other ditches? If so there needs to be an access and maintenance easement to whoever needs access to operate and maintain the ditch, also ditch running along south boundary

ANSELMI ACRES LLC

NAME/TITLE

ACKNOWLEDGMENT

STATE OF UTAH)
COUNTY OF _____)

ON _____ DAY OF _____, 20____, PERSONALLY APPEARED BEFORE ME, THE UNDERSIGNED NOTARY PUBLIC, _____ (AND) _____ BEING BY ME DULY SWORN, ACKNOWLEDGED TO ME THEY ARE _____ AND _____ OF SAID CORPORATION AND THAT THEY SIGNED THE ABOVE OWNER'S DEDICATION AND CERTIFICATION FREELY, VOLUNTARILY, AND IN BEHALF OF SAID CORPORATION FOR THE PURPOSES THEREIN MENTIONED.

COMMISSION EXPIRES

NOTARY PUBLIC

Project Info.

Surveyor: J. FELT
Designer: N. ANDERSON
Begin Date: 6-22-2023
Name: ANSELMI ACRES SUBD. PHASE 2
Number: 7152-19
Revision: _____
Scale: 1"=30'
Checked: _____



WEBER COUNTY PLANNING COMMISSION APPROVAL

THIS IS TO CERTIFY THAT THIS SUBDIVISION PLAT WAS DULY APPROVED BY THE WEBER COUNTY PLANNING COMMISSION. SIGNED THIS ____ DAY OF _____, 20____.

CHAIRMAN, WEBER COUNTY PLANNING COMMISSION

WEBER COUNTY ENGINEER

I HEREBY CERTIFY THAT THE REQUIRED PUBLIC IMPROVEMENT STANDARDS AND DRAWINGS FOR THIS SUBDIVISION CONFORM WITH THE COUNTY STANDARDS AND THE AMOUNT OF THE FINANCIAL GUARANTEE IS SUFFICIENT FOR THE INSTALLATION OF THESE IMPROVEMENTS.

WEBER COUNTY ENGINEER

WEBER COUNTY COMMISSION ACCEPTANCE

THIS IS TO CERTIFY THAT THIS SUBDIVISION PLAT, THE DEDICATION OF STREETS AND OTHER PUBLIC WAYS AND FINANCIAL GUARANTEE OF PUBLIC IMPROVEMENTS ASSOCIATED WITH THIS SUBDIVISION, THEREON ARE HEREBY APPROVED AND ACCEPTED BY THE COMMISSIONERS OF WEBER COUNTY, UTAH. SIGNED THIS ____ DAY OF _____, 20____.

CHAIRMAN, WEBER COUNTY COMMISSION

ATTEST TITLE

WEBER COUNTY SURVEYOR

I HEREBY CERTIFY THAT THE WEBER COUNTY SURVEYOR'S OFFICE HAS REVIEWED THIS PLAT AND ALL CONDITIONS FOR APPROVAL BY THIS OFFICE HAVE BEEN SATISFIED. THE APPROVAL OF THIS PLAT BY THE WEBER COUNTY SURVEYOR DOES NOT RELIEVE THE LICENSED LAND SURVEYOR WHO EXECUTED THIS PLAT FROM THE RESPONSIBILITIES AND/OR LIABILITIES ASSOCIATED THEREWITH.

SIGNED THIS ____ DAY OF _____, 20____.

WEBER COUNTY SURVEYOR

WEBER COUNTY ATTORNEY

I HAVE EXAMINED THE FINANCIAL GUARANTEE AND OTHER DOCUMENTS ASSOCIATED WITH THIS SUBDIVISION PLAT, AND IN MY OPINION THEY CONFORM WITH THE COUNTY ORDINANCE APPLICABLE THERETO AND NOW IN FORCE AND AFFECT. SIGNED THIS ____ DAY OF _____, 20____.

WEBER COUNTY ATTORNEY

WEBER-MORGAN HEALTH DEPARTMENT

I HEREBY CERTIFY THAT THE SOILS, PERCOLATION RATES, AND SITE CONDITIONS FOR THIS SUBDIVISION HAVE BEEN INVESTIGATED BY THIS OFFICE AND ARE APPROVED FOR ON-SITE WASTEWATER DISPOSAL SYSTEMS. SIGNED THIS ____ DAY OF _____, 20____.

DIRECTOR, WEBER-MORGAN HEALTH DEPARTMENT

Weber County Recorder

Entry No. _____ Fee Paid _____
And Recorded, _____
At _____ in Book _____
Of The Official Records, Page _____
Recorded For: _____
Weber County Recorder
Deputy.