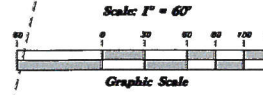
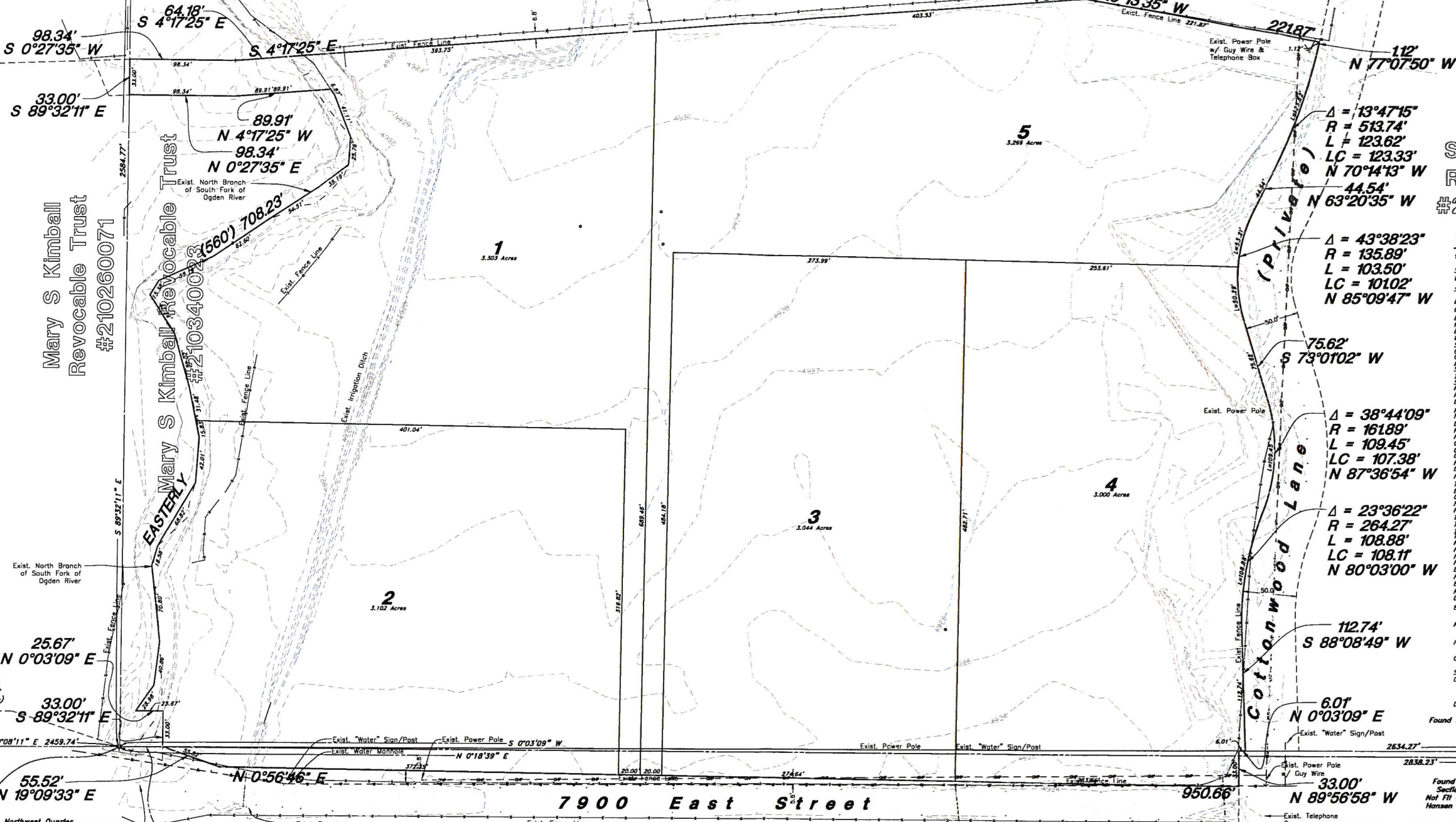
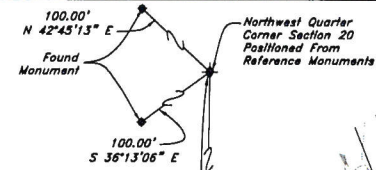


Carolyn M. Froerer
#210340013



Cottonwood Riv
Subdivision



Buhrley
South Fork
Ranch LLC
#210340002

Legend
(Note: All items may not appear on drawing)

- San Sewer Manhole
- Water Manhole
- Storm Drain Manhole
- Electrical Manhole
- Catch Basins
- Exist. Fire Hydrant
- Exist. Water Valve
- Water Valve
- Sanitary Sewer
- Utility Water
- Gas Line
- Irrigation Line
- Storm Drain
- Telephone Line
- Secondary Waterline
- Power Line
- Fire Line
- Land Drain
- Power pole w/guy
- Light Pole
- Fence
- Flowline of ditch
- Overhead Power line
- Corrugated Metal Pipe
- Concrete Pipe
- Reinforced Concrete Pipe
- Ductile Iron
- Fluoropolymer Chloride
- Top of Asphalt
- Centerline
- Flowline
- Finish Floor
- Top of Curb
- Top of Wall
- Top of Concrete
- Top of Walk
- Finish Grade
- Natural Ground
- Exist. Contour
- Finish Contour
- Exist. Contour
- Finish Grade
- Ridge Line
- Direction of Flow
- Existing Asphalt
- New Asphalt
- Heavy Duty Asphalt
- Concrete
- Spill
- Curb & Gutter
- Demo Tree
- Found Stone Per Hansen and Associates Survey
- Found WC Brass Cap Section Corner Does Not Fit Occupation Per Hansen and Associates Survey

Mary S Kimball
Revocable Trust
#210260071

Mary S Kimball
Revocable Trust
#210340023

J & M Holdings, LLC
#210300004

7900 East Street

BOUNDARY DESCRIPTION
Part of the Northwest Quarter of Section 20, Township 6 North, Range 2 East, Salt Lake Meridian, U.S. Survey:
Beginning 40 feet South of the Northwest Corner of Section 20, thence East to the centerline of the North branch of the South fork of the Ogden River, thence Easterly along said centerline 560 feet, more or less, thence North 4d45' West 20 feet, thence North 1.49 chains to section line, thence East 33 feet, thence South 1.49 chains, thence south 4d45' East 12.08 chains, thence South 9d46' West 245 feet to the North line of Cottonwood Lane, thence Westerly along the North line of road to the West line of said quarter section, thence North 1003 feet to beginning. Also part of the Northeast Quarter Section 19, Township 6 North, Range 2 East, Salt Lake Meridian, U.S. Survey:
Beginning 40 feet South of the Northeast corner of said quarter section, thence South 18d West 55.42 feet, thence South 0°14'29\"/>

GREAT BASIN ENGINEERING
SOUTH 1475 EAST OGDEN, UTAH 84403
MAIN 801-444-1515 S.L.L.C. (801)521-0222
WWW.GRETBASINENGINEERING.COM

Preliminary Plan
Satterthwaite Estates
950 South 7900 East Huntsville, Weber County, Utah
A part of Section 20, T6N, R2E, SL&M, U.S. Survey

17 Dec, 2012
SHEET NO.
C1
12013