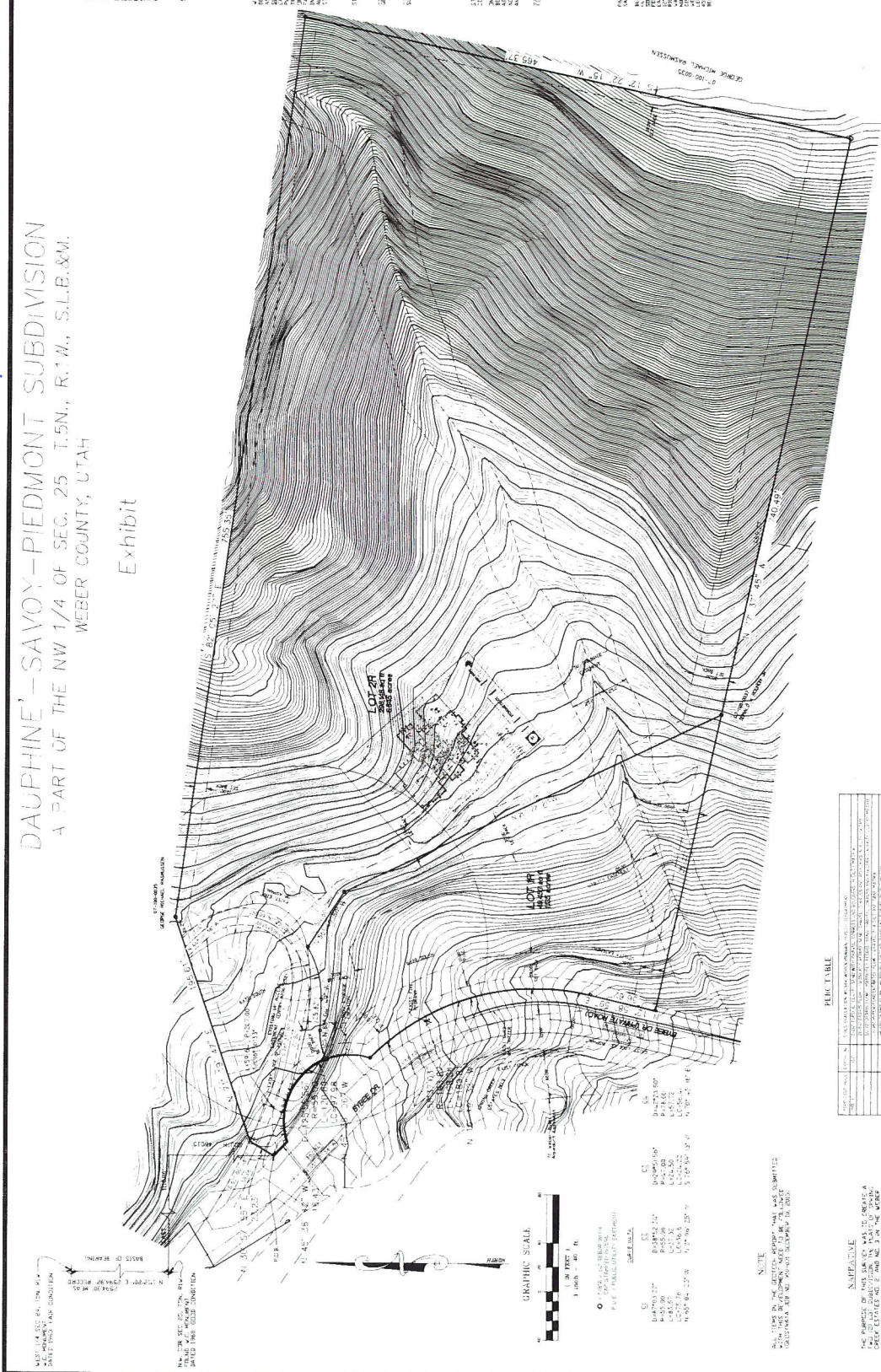


# Site Plan (Preliminary)

## DAUPHINE - SAVOY - PIEDMONT SUBDIVISION A PART OF THE NW 1/4 OF SEC. 25 T.5N., R.1W., S.L.B.&M. WEBER COUNTY, UTAH

Exhibit



**SURVEYOR'S CERTIFICATE**  
I, DANIEL F. BENTLEY, BEING A LICENSED SURVEYOR IN THE STATE OF UTAH, HAVE BEEN EMPLOYED BY THE LANDMARK SURVEYING, INC. TO SURVEY AND PLAT THE ABOVE DESCRIBED SUBDIVISION AND TO PREPARE THIS PLAN, MEASUREMENTS AND CALCULATIONS THEREON. I HEREBY CERTIFY THAT THIS PLAN IS A TRUE AND CORRECT REPRESENTATION OF THE SURVEY AND THAT I AM A LICENSED SURVEYOR IN THE STATE OF UTAH. I HAVE NOT BEEN CONVICTED OF ANY CRIME INVOLVING FRAUD OR PERJURY IN CONNECTION WITH MY PROFESSIONAL SERVICE AS A SURVEYOR. I HAVE NOT BEEN CONVICTED OF ANY CRIME INVOLVING FRAUD OR PERJURY IN CONNECTION WITH MY PROFESSIONAL SERVICE AS A SURVEYOR. I HAVE NOT BEEN CONVICTED OF ANY CRIME INVOLVING FRAUD OR PERJURY IN CONNECTION WITH MY PROFESSIONAL SERVICE AS A SURVEYOR.

**DANIEL F. BENTLEY**  
BY ORDER OF THE SURVEYOR, DANIEL F. BENTLEY, BEING A LICENSED SURVEYOR IN THE STATE OF UTAH, I HEREBY CERTIFY THAT THIS PLAN IS A TRUE AND CORRECT REPRESENTATION OF THE SURVEY AND THAT I AM A LICENSED SURVEYOR IN THE STATE OF UTAH. I HAVE NOT BEEN CONVICTED OF ANY CRIME INVOLVING FRAUD OR PERJURY IN CONNECTION WITH MY PROFESSIONAL SERVICE AS A SURVEYOR. I HAVE NOT BEEN CONVICTED OF ANY CRIME INVOLVING FRAUD OR PERJURY IN CONNECTION WITH MY PROFESSIONAL SERVICE AS A SURVEYOR. I HAVE NOT BEEN CONVICTED OF ANY CRIME INVOLVING FRAUD OR PERJURY IN CONNECTION WITH MY PROFESSIONAL SERVICE AS A SURVEYOR.

**LANDMARK SURVEYING, INC.**  
A COMPLETE LAND SURVEYING SERVICE  
444 S. MAIN ST., SUITE 200, OGDEN, UTAH 84403  
PHONE: (435) 771-1111 FAX: (435) 771-1112  
WWW.LANDMARKSURVEYING.COM

**WEBER COUNTY RECORDER**  
DATE: \_\_\_\_\_ FILE: \_\_\_\_\_  
FILED FOR RECORD & RECORD  
BY: \_\_\_\_\_  
MAY 15 2014 10:00 AM  
MAY 15 2014 10:00 AM  
MAY 15 2014 10:00 AM  
MAY 15 2014 10:00 AM

**WEBER COUNTY COMMISSION ACCEPTANCE**  
I, \_\_\_\_\_, COUNTY CLERK, DO HEREBY CERTIFY THAT THIS PLAN IS A TRUE AND CORRECT REPRESENTATION OF THE SURVEY AND THAT I AM A LICENSED SURVEYOR IN THE STATE OF UTAH. I HAVE NOT BEEN CONVICTED OF ANY CRIME INVOLVING FRAUD OR PERJURY IN CONNECTION WITH MY PROFESSIONAL SERVICE AS A SURVEYOR. I HAVE NOT BEEN CONVICTED OF ANY CRIME INVOLVING FRAUD OR PERJURY IN CONNECTION WITH MY PROFESSIONAL SERVICE AS A SURVEYOR. I HAVE NOT BEEN CONVICTED OF ANY CRIME INVOLVING FRAUD OR PERJURY IN CONNECTION WITH MY PROFESSIONAL SERVICE AS A SURVEYOR.

**WEBER COUNTY ATTORNEY**  
I, \_\_\_\_\_, COUNTY ATTORNEY, DO HEREBY CERTIFY THAT THIS PLAN IS A TRUE AND CORRECT REPRESENTATION OF THE SURVEY AND THAT I AM A LICENSED SURVEYOR IN THE STATE OF UTAH. I HAVE NOT BEEN CONVICTED OF ANY CRIME INVOLVING FRAUD OR PERJURY IN CONNECTION WITH MY PROFESSIONAL SERVICE AS A SURVEYOR. I HAVE NOT BEEN CONVICTED OF ANY CRIME INVOLVING FRAUD OR PERJURY IN CONNECTION WITH MY PROFESSIONAL SERVICE AS A SURVEYOR. I HAVE NOT BEEN CONVICTED OF ANY CRIME INVOLVING FRAUD OR PERJURY IN CONNECTION WITH MY PROFESSIONAL SERVICE AS A SURVEYOR.

**WEBER COUNTY ENGINEER**  
I, \_\_\_\_\_, COUNTY ENGINEER, DO HEREBY CERTIFY THAT THIS PLAN IS A TRUE AND CORRECT REPRESENTATION OF THE SURVEY AND THAT I AM A LICENSED SURVEYOR IN THE STATE OF UTAH. I HAVE NOT BEEN CONVICTED OF ANY CRIME INVOLVING FRAUD OR PERJURY IN CONNECTION WITH MY PROFESSIONAL SERVICE AS A SURVEYOR. I HAVE NOT BEEN CONVICTED OF ANY CRIME INVOLVING FRAUD OR PERJURY IN CONNECTION WITH MY PROFESSIONAL SERVICE AS A SURVEYOR. I HAVE NOT BEEN CONVICTED OF ANY CRIME INVOLVING FRAUD OR PERJURY IN CONNECTION WITH MY PROFESSIONAL SERVICE AS A SURVEYOR.

**WEBER COUNTY PLANNING COMMISSION APPROVAL**  
I, \_\_\_\_\_, COUNTY PLANNING COMMISSION, DO HEREBY CERTIFY THAT THIS PLAN IS A TRUE AND CORRECT REPRESENTATION OF THE SURVEY AND THAT I AM A LICENSED SURVEYOR IN THE STATE OF UTAH. I HAVE NOT BEEN CONVICTED OF ANY CRIME INVOLVING FRAUD OR PERJURY IN CONNECTION WITH MY PROFESSIONAL SERVICE AS A SURVEYOR. I HAVE NOT BEEN CONVICTED OF ANY CRIME INVOLVING FRAUD OR PERJURY IN CONNECTION WITH MY PROFESSIONAL SERVICE AS A SURVEYOR. I HAVE NOT BEEN CONVICTED OF ANY CRIME INVOLVING FRAUD OR PERJURY IN CONNECTION WITH MY PROFESSIONAL SERVICE AS A SURVEYOR.

**WEBER COUNTY HEALTH DEPARTMENT**  
I, \_\_\_\_\_, COUNTY HEALTH DEPARTMENT, DO HEREBY CERTIFY THAT THIS PLAN IS A TRUE AND CORRECT REPRESENTATION OF THE SURVEY AND THAT I AM A LICENSED SURVEYOR IN THE STATE OF UTAH. I HAVE NOT BEEN CONVICTED OF ANY CRIME INVOLVING FRAUD OR PERJURY IN CONNECTION WITH MY PROFESSIONAL SERVICE AS A SURVEYOR. I HAVE NOT BEEN CONVICTED OF ANY CRIME INVOLVING FRAUD OR PERJURY IN CONNECTION WITH MY PROFESSIONAL SERVICE AS A SURVEYOR. I HAVE NOT BEEN CONVICTED OF ANY CRIME INVOLVING FRAUD OR PERJURY IN CONNECTION WITH MY PROFESSIONAL SERVICE AS A SURVEYOR.

**PERMITS TABLE**

NO.	DATE	DESCRIPTION	STATUS
1	05/15/14	PLANNING COMMISSION APPROVAL	PENDING
2	05/15/14	HEALTH DEPARTMENT APPROVAL	PENDING
3	05/15/14	ENGINEERING APPROVAL	PENDING
4	05/15/14	ATTORNEY APPROVAL	PENDING
5	05/15/14	COMMISSION ACCEPTANCE	PENDING
6	05/15/14	RECORDING	PENDING

**NOTE**  
THIS PLAN IS A PRELIMINARY PLAN AND IS NOT TO BE USED FOR CONSTRUCTION. THE FINAL PLAN WILL BE SUBMITTED TO THE APPROPRIATE AGENCIES FOR APPROVAL. THE SURVEYOR'S OFFICE IS NOT RESPONSIBLE FOR ANY ERRORS OR OMISSIONS IN THIS PLAN. THE SURVEYOR'S OFFICE IS NOT RESPONSIBLE FOR ANY ERRORS OR OMISSIONS IN THIS PLAN. THE SURVEYOR'S OFFICE IS NOT RESPONSIBLE FOR ANY ERRORS OR OMISSIONS IN THIS PLAN.