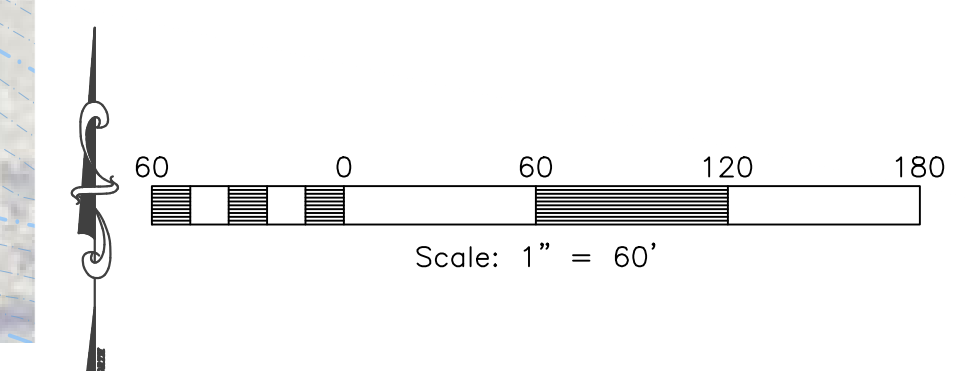
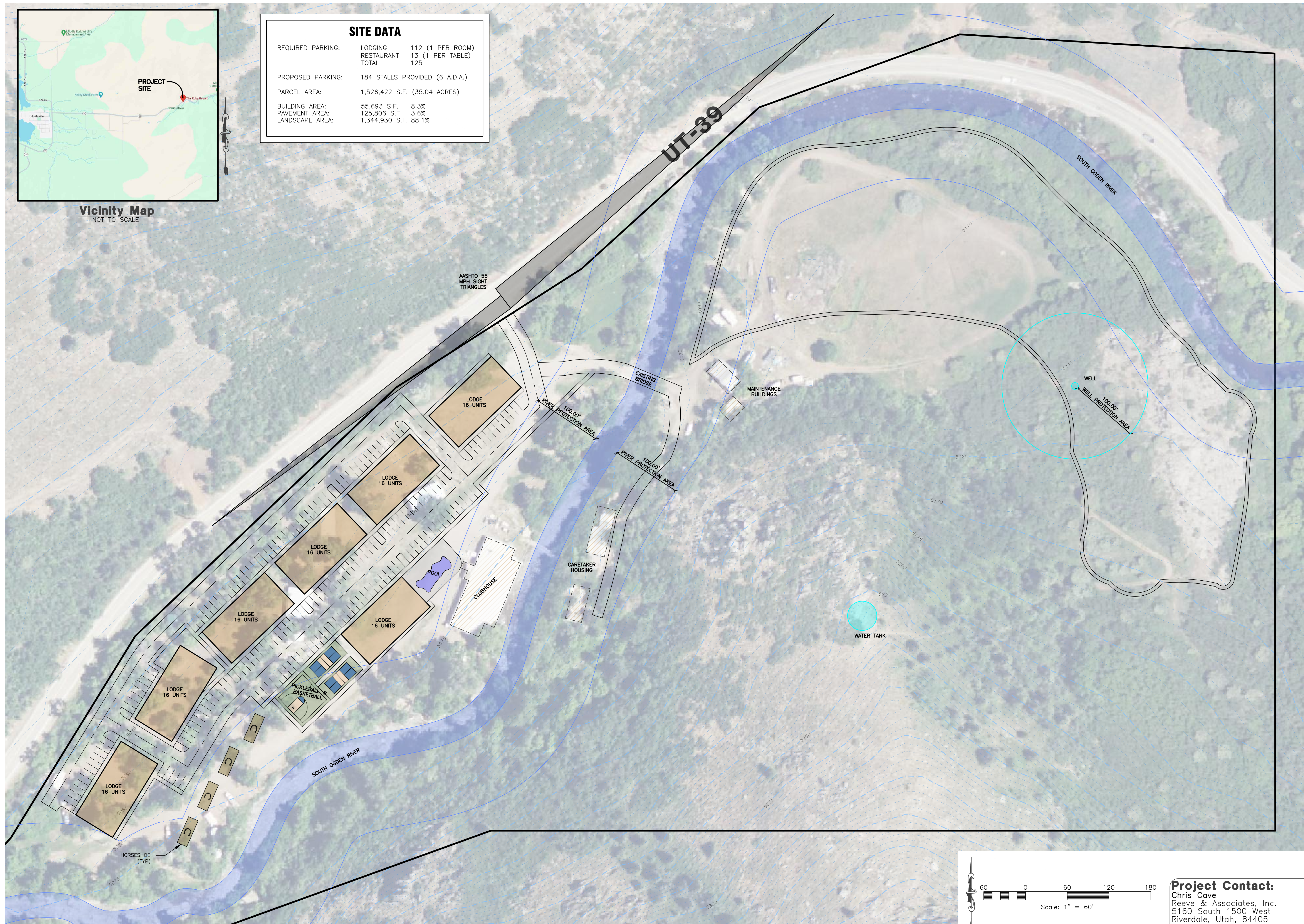


**Vicinity Map**  
NOT TO SCALE

SITE DATA		
REQUIRED PARKING:	LODGING	112 (1 PER ROOM)
	RESTAURANT	13 (1 PER TABLE)
	TOTAL	125
PROPOSED PARKING:	184 STALLS PROVIDED (6 A.D.A.)	
PARCEL AREA:	1,526,422 S.F. (35.04 ACRES)	
BUILDING AREA:	55,693 S.F.	8.3%
PAVEMENT AREA:	125,806 S.F.	3.6%
LANDSCAPE AREA:	1,344,930 S.F.	88.1%



**Project Contact:**  
Chris Cave  
Reeve & Associates, Inc.  
5160 South 1500 West, Riverdale, Utah, 84405  
PH:(801) 621-3100

**Reeve & Associates, Inc.**  
  
 5160 SOUTH 1500 WEST, RIVERDALE, UTAH 84405  
 TEL: (801) 621-3100 WWW.REEVE.CO  
 LAND PLANNERS • CIVIL ENGINEERS • LAND SURVEYORS  
 TRAFFIC ENGINEERS • STRUCTURAL ENGINEERS • LANDSCAPE ARCHITECTS

REVISIONS	DESCRIPTION
DATE	

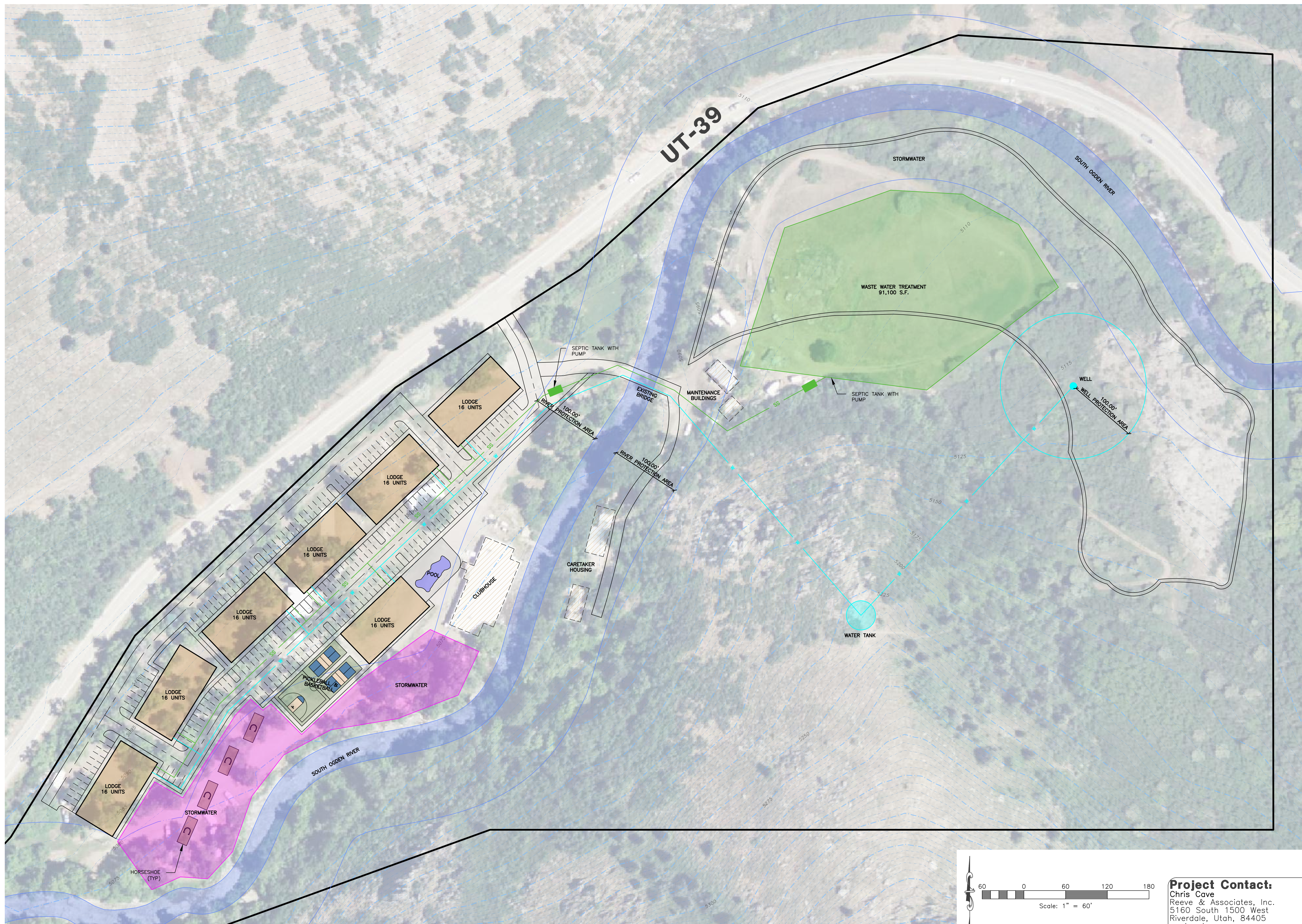
**Ruby Resort**  
**10909 UT-39**  
 HUNTSVILLE CITY, WEBER COUNTY, UTAH

**Condition Use Permit Site Plan**

<b>Project Info.</b>	
Engineer:	N. Reeve
Planner:	C. Cave
Designer:	J. Meyers
Date:	October 2023
Name:	Ruby Resort
Number:	8036-01

**1**  
Total Sheets





**Reeve & Associates, Inc.**  
 5160 SOUTH 1500 WEST, RIVERDALE, UTAH 84405  
 TEL: (801) 621-3100 WWW.REEVE.CO

**RA**

LAND PLANNERS • CIVIL ENGINEERS • LAND SURVEYORS  
 TRAFFIC ENGINEERS • STRUCTURAL ENGINEERS • LANDSCAPE ARCHITECTS

REVISIONS	DESCRIPTION
DATE	

**Ruby Resort**  
**10909 UT-39**  
 HUNTSVILLE CITY, WEBER COUNTY, UTAH

**Conditional Use Permit Utility Plan**

Engineer:	N. Reeve
Planner:	C. Cave
Designer:	J. Meyers
Date:	October 2023
Name:	Ruby Resort
Number:	8036-01

**Project Info.**

Engineer: N. Reeve  
 Planner: C. Cave  
 Designer: J. Meyers  
 Date: October 2023  
 Name: Ruby Resort  
 Number: 8036-01

**Project Contact:**  
 Chris Cave  
 Reeve & Associates, Inc.  
 5160 South 1500 West  
 Riverdale, Utah, 84405  
 PH:(801) 621-3100

**2**  
 Total Sheets

Reeve & Associates, Inc. - Solutions You Can Build On

Reeve & Associates, Inc. - Solutions You Can Build On