

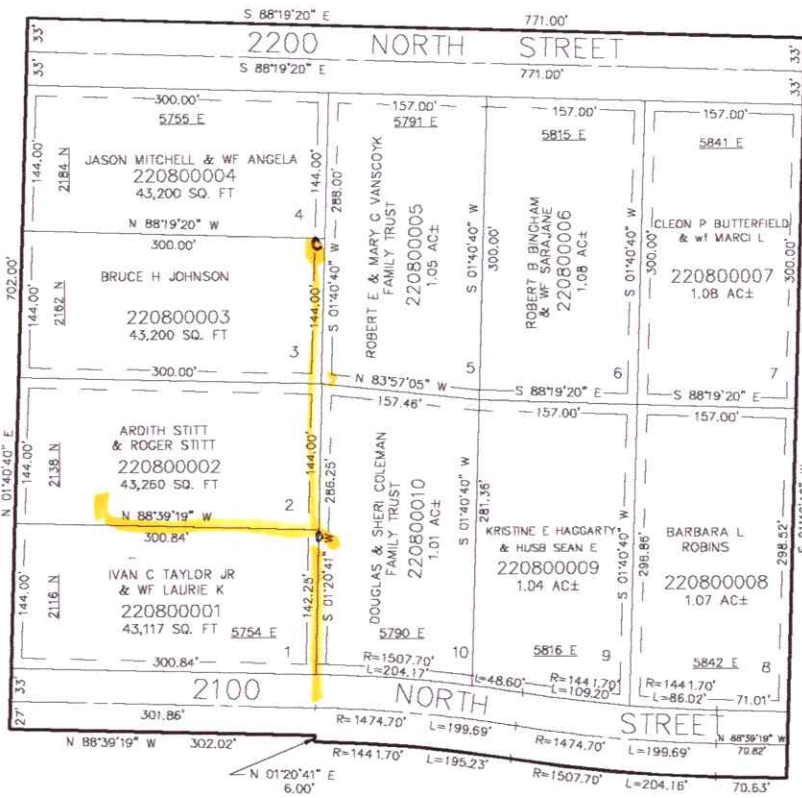
PART OF THE SW.1/4, OF SEC. 35, T.7N., R.1E., S.L.B. & M.
GARDENS OF EDEN SUBDIVISION

IN WEBER COUNTY
SCALE 1" = 100'

TAXING UNIT: 28

Roger + Ardith Stitt
2138 N 5700 E
Eden UT 84310

SEE PAGE 51



SEE PAGE 51



SEE PAGE 51

SFF PAGE 51

FOR COMPLETE ENG DATA SEE ORIGINAL DEDICATION PLAT IN BOOK 22, PAGE 32 OF RECORDS.

10' UTILITY & DRAINAGE EASEMENTS EACH SIDE OF PROPERTY LINES AS INDICATED BY DASHED LINES EXCEPT AS OTHERWISE SHOWN.

FOR TAX PURPOSES ONLY

86. 255 + 9