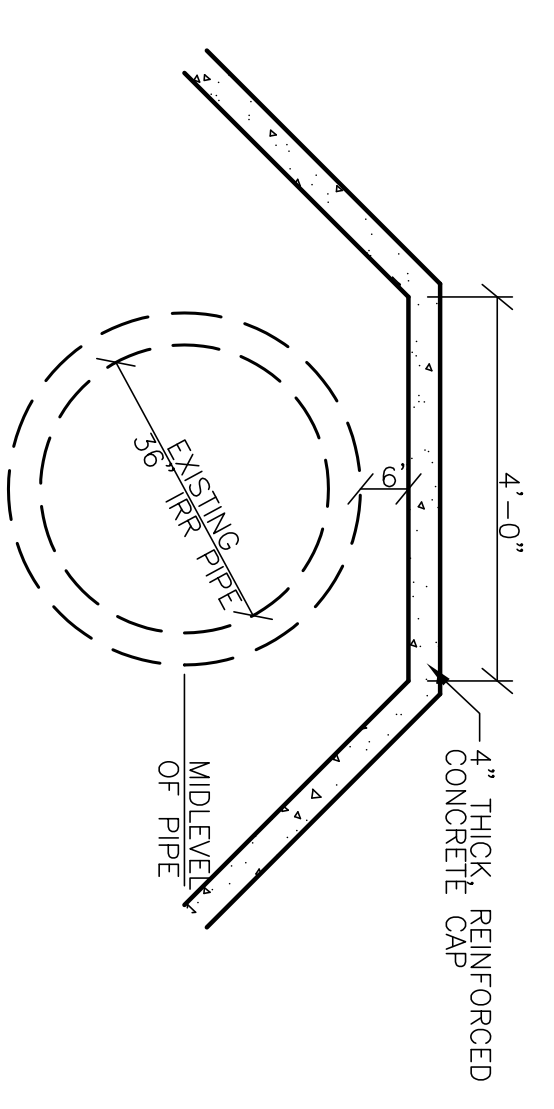
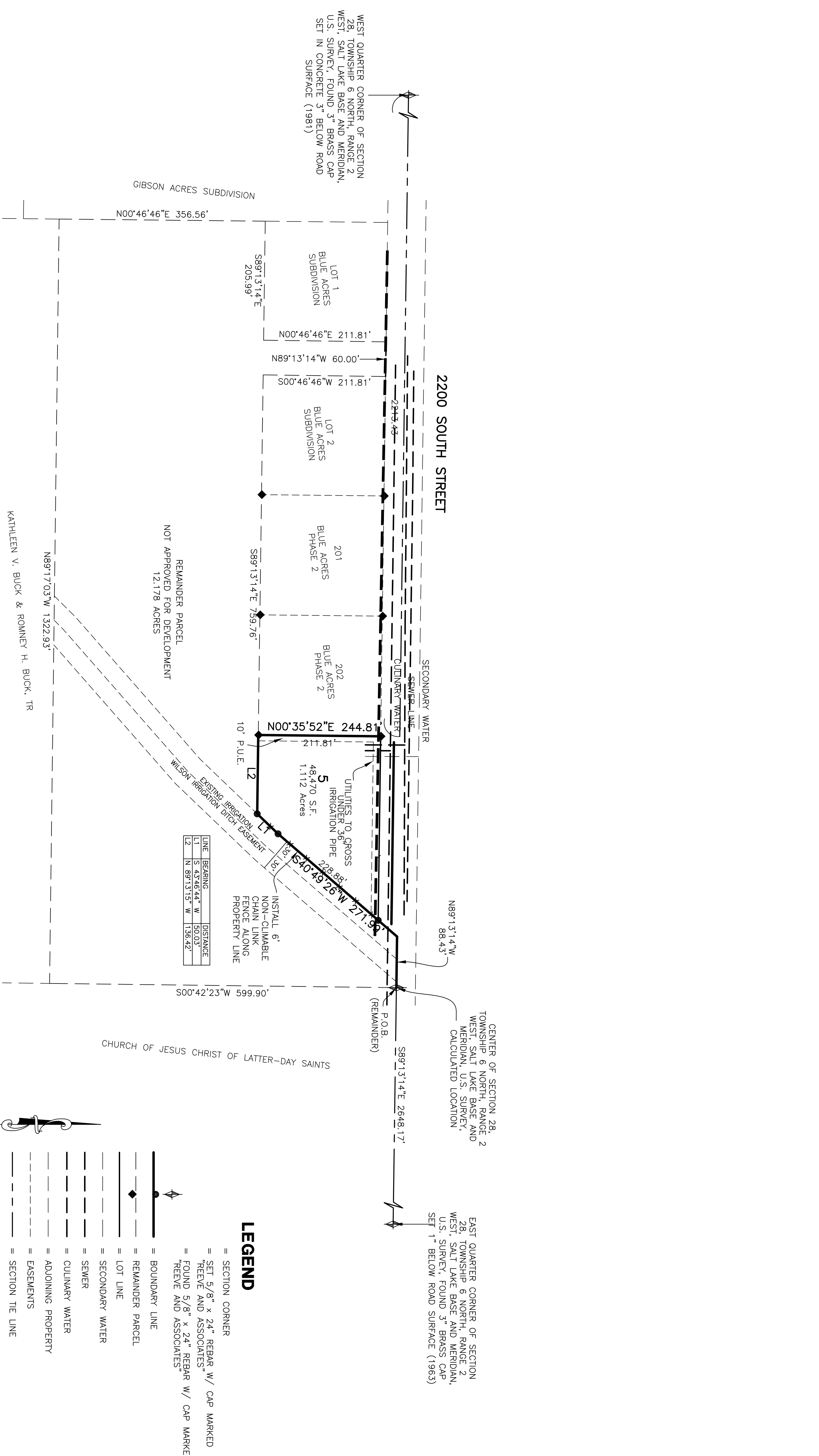


BLUE ACRES SUBDIVISION PHASE 3

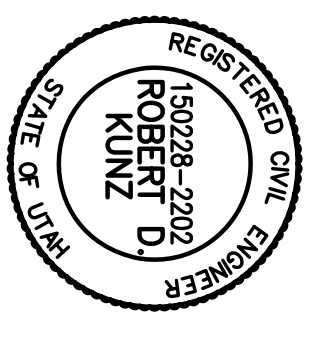
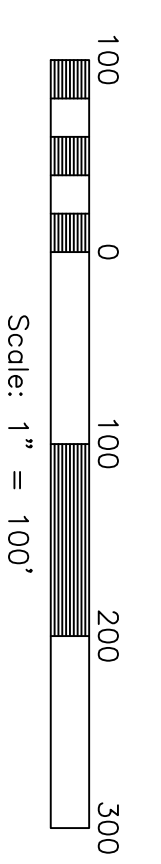
A PART OF THE SOUTHWEST QUARTER OF SECTION 28, TOWNSHIP 6 NORTH, RANGE 2 WEST, SALT LAKE BASE AND MERIDIAN, U.S. SURVEY
WEBER COUNTY, UTAH



Lot Driveway Crossing Detail
SCALE: 1"=2'

LEGEND

- = SECTION CORNER
- = SET 5/8" x 24" REBAR W/ CAP MARKED REVEE AND ASSOCIATES
- = FOUND 5/8" x 24" REBAR W/ CAP MARKED "REVEE AND ASSOCIATES"
- = BOUNDARY LINE
- = REMAINDER PARCEL
- = LOT LINE
- = SECONDARY WATER
- = SEWER
- = CULINARY WATER
- = ADJOINING PROPERTY EASEMENTS
- = SECTION TIE LINE
- = ROAD DEDICATION
- = PUBLIC UTILITY EASEMENT



Reeve & Associates, Inc.
320 CHAMBERS STREET, SUITE 14, OGDEN, UTAH 84403
TEL: (801) 621-3100 FAX: (801) 621-2666 www.reeve-associates.com

Surveyor: R. KUNZ
Designer: N. ANDERSON
Begin Date: 10-01-13
Name: BLUE ACRES SUBDIVISION PHASE 3
Number: 50336-01
Revision: _____
Scale: 1"=100'
Checked: _____