
ENGINEERING ADDENDUM

The following letter is provided by Solid Structural Engineering for the Huntsville B&B at

1188 South Old Trappers Loop Road
Huntsville, UT 84317

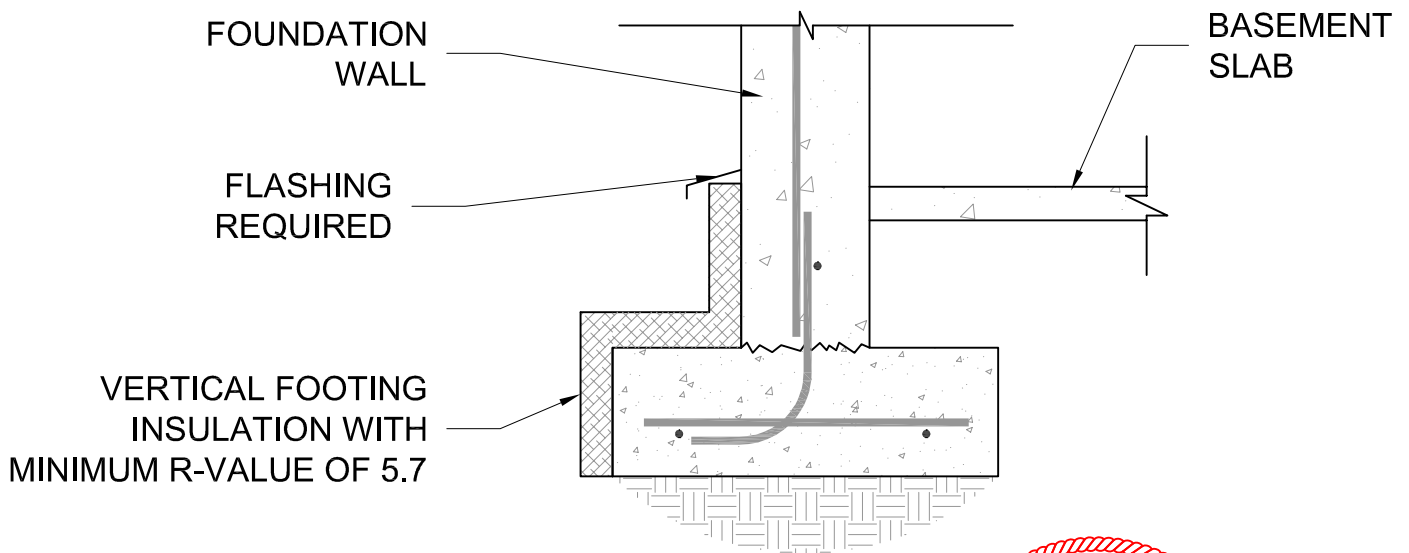
Changes listed in this letter supersede information contained in the original structural drawings or previous letters. Only items listed in this letter are permitted to be changed from the original design or previous letters. Any alterations to this letter are prohibited.

The builder requested revisions for the rear footings being poured above the frost depth.

- For all footings that do not extend to frost depth of 36":
 - o Insulate the face of the footings from the top of basement slab elevation to the bottom of the footings with an insulation R-value of 5.7 (minimum).
 - o Vertical insulation shall be expanded polystyrene insulation or extruded polystyrene insulation.
 - o Flashing is required at the top of the insulation.
 - o See attached detail BG.



Professional Engineer Seal



08/25/2023



INSULATED FOOTING

SCALE : NTS