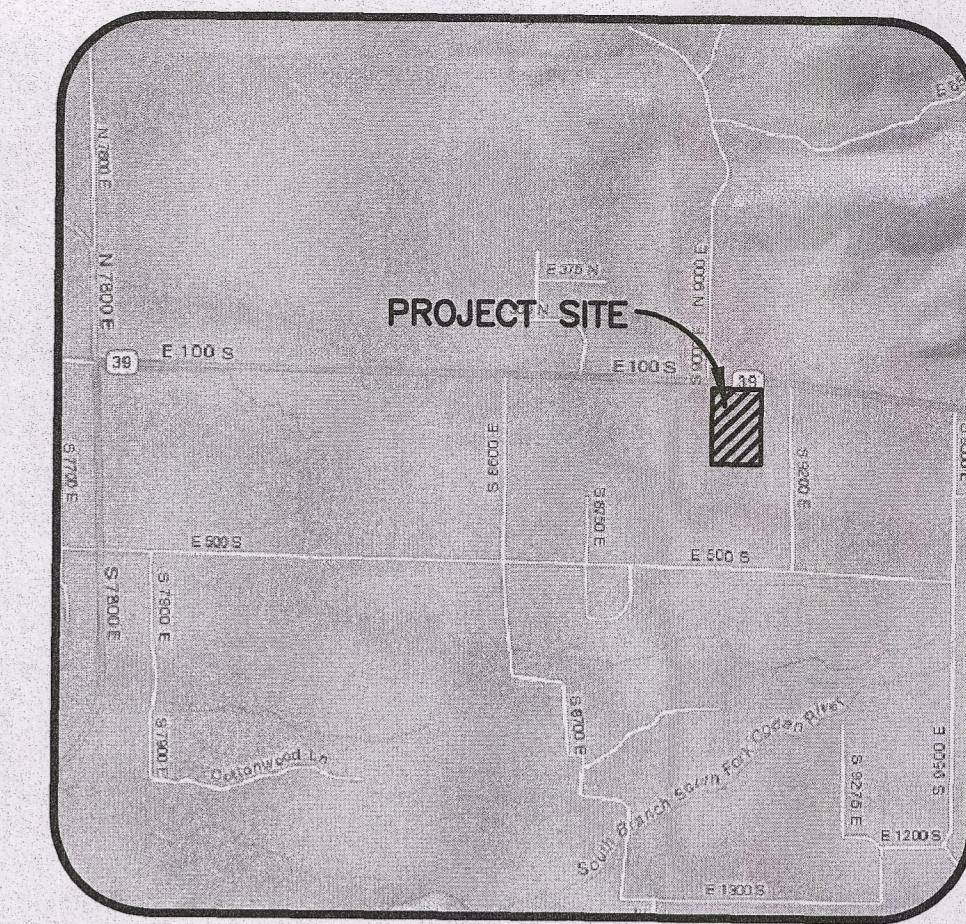


Project Narrative/Notes/Revisions

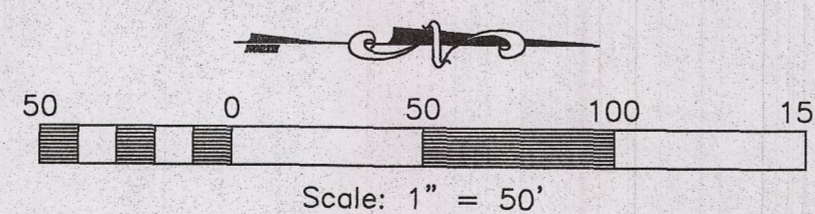
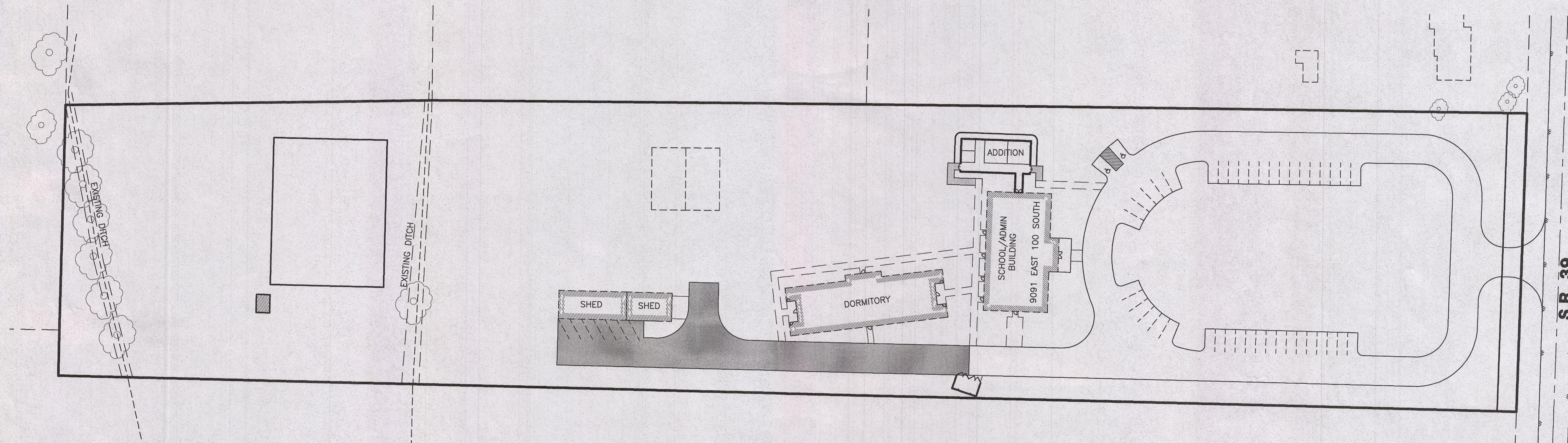
- 1) 3/25/14 RH - COMPLETED DESIGN FOR SUBMITTAL TO COUNTY.
- 2) 4/16/14 ST - ASPHALT EXTENSION AND ADDITIONAL PARKING.

WAY POINT ACADEMY Administration Addition Site Plans

HUNTSVILLE, WEBER COUNTY, UTAH
MARCH 2014



Vicinity Map
NOT TO SCALE



RECEIVED
APR 23 2014
BY:

Sheet Index

- Sheet 1 - Cover/Index Sheet
- Sheet 2 - Site Plan
- Sheet 3 - Landscape Plan

Engineer's Notice To Contractors

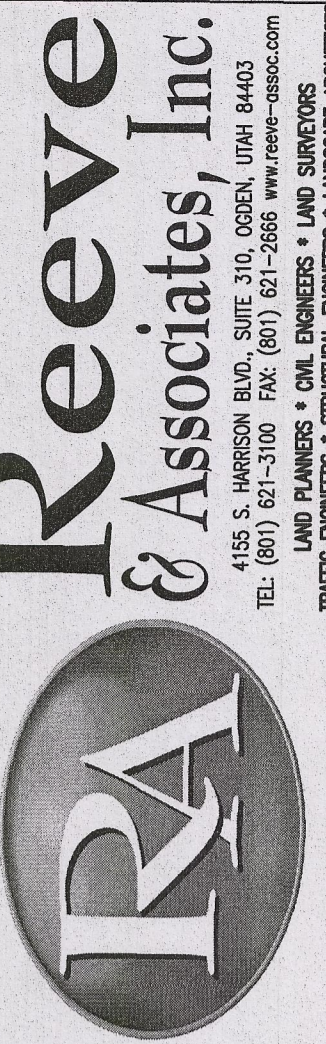
THE EXISTENCE AND LOCATION OF ANY UNDERGROUND UTILITY PIPES OR STRUCTURES SHOWN ON THESE PLANS WERE OBTAINED FROM AVAILABLE INFORMATION PROVIDED BY OTHERS. THE LOCATIONS SHOWN ARE APPROXIMATE AND SHALL BE CONFIRMED IN THE FIELD BY THE CONTRACTOR, SO THAT ANY NECESSARY ADJUSTMENT CAN BE MADE IN ALIGNMENT AND/OR GRADE OF THE PROPOSED IMPROVEMENT. THE CONTRACTOR IS REQUIRED TO CONTACT THE UTILITY COMPANIES AND TAKE DUE PRECAUTIONARY MEASURE TO PROTECT ANY UTILITY LINES SHOWN, AND ANY OTHER LINES OBTAINED BY THE CONTRACTOR'S RESEARCH, AND OTHERS NOT OF RECORD OR NOT SHOWN ON THESE PLANS.

Elevation Datum
SITE BENCHMARK:
NORTH QUARTER CORNER OF SECTION 16,
T.6N., R.2E., S.1B. & M., U.S. SURVEY
ELEVATION = 5025.463'
NOTE:
SURVEY PROVIDED BY OTHERS.

Property Owner:
Baddley, Jacqueline M. &
Craig R. Morris Trustees
1546 Hilda Drive
Fruit Heights, Utah 84037

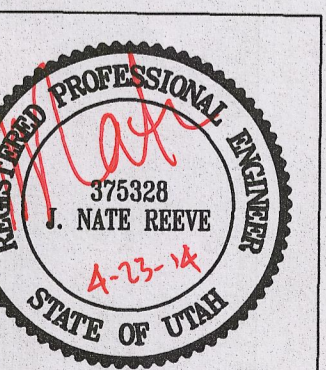
Project Contact:
Mike Bulloch & Jared Balmer
3869 North Patio Drive
Eden, Utah 84310
PH: (801) 941-2755

Blue Stakes Location Center
Call: Toll Free
1-800-662-4111
Two Working Days Before You Dig



REVISIONS	DATE	DESCRIPTION
	4-16-14	ST - Asphalt Ext./Parking

**Way Point Academy
Administration Addition**
WEBER COUNTY, UTAH
Cover Sheet



Project Info.
Engineer:
J. NATE REEVE, P.E.
Drafted:
R. HANSEN
Begin Date:
MARCH 6, 2014
Name:
WAY POINT ACADEMY
ADMINISTRATION ADDITION
Number: 5939-01

Sheet **3**
1 Sheets