

SEAL:

REV	DATE	DESCRIPTION

PROJECT: A Sanctuary Expansion for
Washington Heights Church
1770 E 6200 S
Ogden, UT, 84405

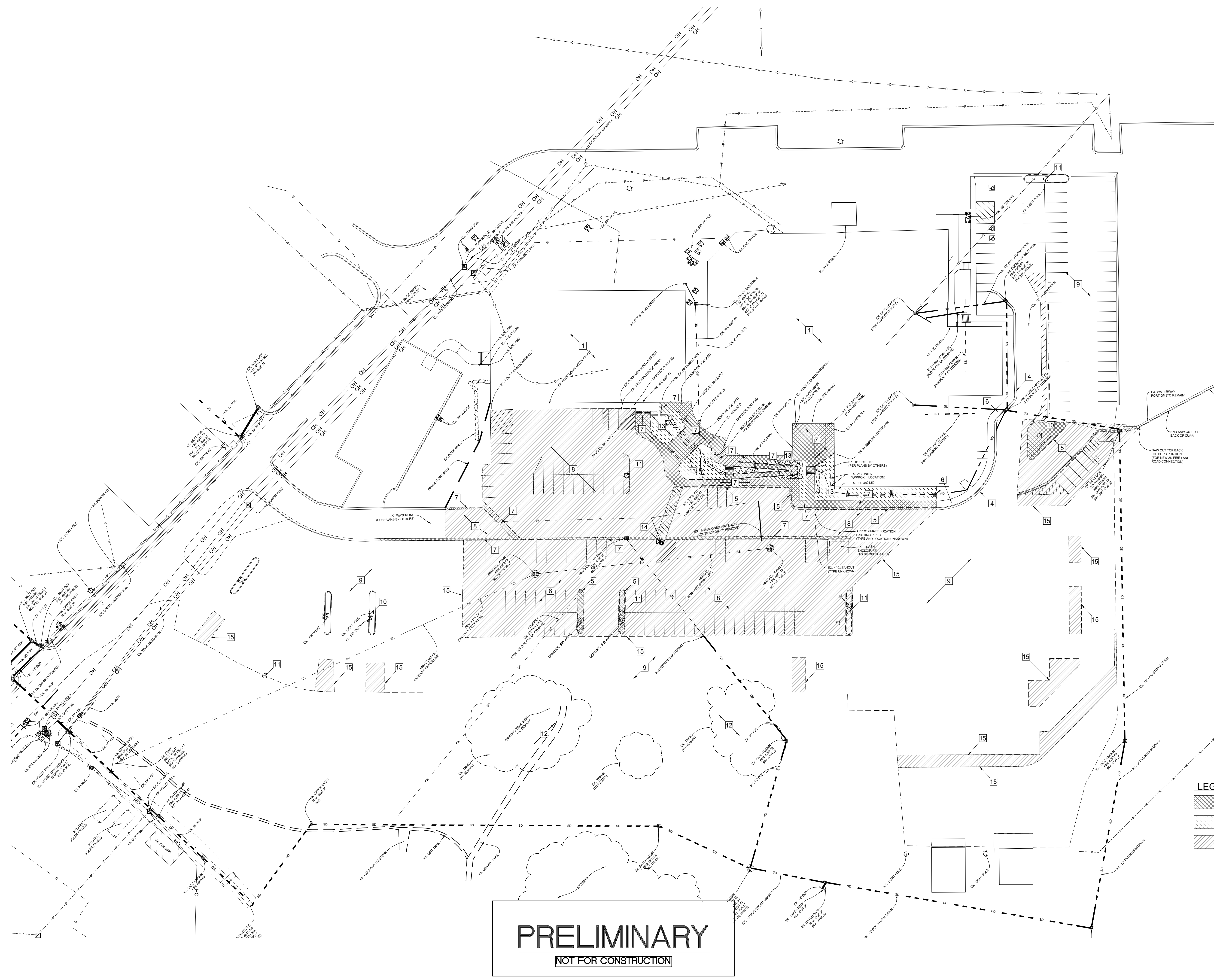
MOUNTAIN WEST ARCHITECTURE | 1542 25TH STREET - OGDEN, UTAH 84401 | PH: 801-388-6052 | www.mountainwestarchitecture.com

SHEET TITLE:
DEMOLITION PLAN

SHEET NUMBER:
CE1-01

PROJECT: AC-161

DO NOT SCALE DRAWING



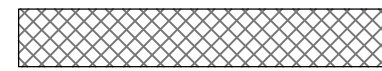


DEMOLITION PLAN KEY NOTES

- 1 EXISTING BUILDING TO REMAIN
- 2 EXISTING FENCE TO BE REMOVED
- 3 EXISTING FENCE TO BE REMAIN
- 4 EXISTING CURB AND GUTTER TO REMAIN
- 5 EXISTING CURB AND GUTTER TO BE REMOVED
- 6 EXISTING SIDEWALK TO REMAIN
- 7 EXISTING SIDEWALK / CONCRETE TO BE REMOVED
- 8 EXISTING ASPHALT PAVEMENT TO BE REMOVED
- 9 EXISTING ASPHALT PAVEMENT TO REMAIN
- 10 EXISTING LIGHT POLE TO REMAIN
- 11 EXISTING LIGHT POLE TO BE REMOVED
- 12 EXISTING LANDSCAPE AREA/TREES TO REMAIN
- 13 EXISTING LANDSCAPE AREA/PLAY FIELD SHALL BE REMOVED. EXISTING SPRINKLERS SHALL BE CAPPED AND EXISTING IRRIGATION BOXES TO BE REMOVED.
- 14 EXISTING FIRE HYDRANT ASSEMBLY TO BE RELOCATED
- 15 SAWCUT EXISTING ASPHALT

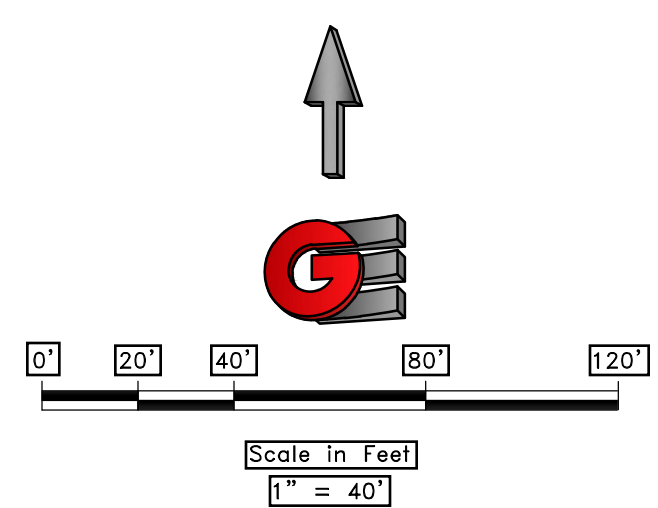
DEMOLITION PLAN GENERAL NOTES:

- 1. EXISTING ASPHALT OR CONCRETE SHALL BE SAWCUT PRIOR TO REMOVAL FOR REMOVAL ADJACENT TO ASPHALT OR CONCRETE THAT WILL REMAIN IN PLACE.
- 2. ALL UTILITIES THAT WILL REMAIN SHALL BE PROTECTED IN PLACE TO PREVENT DAMAGE OR DEBRIS FROM ENTERING BOXES OR MANHOLES.

LEGEND

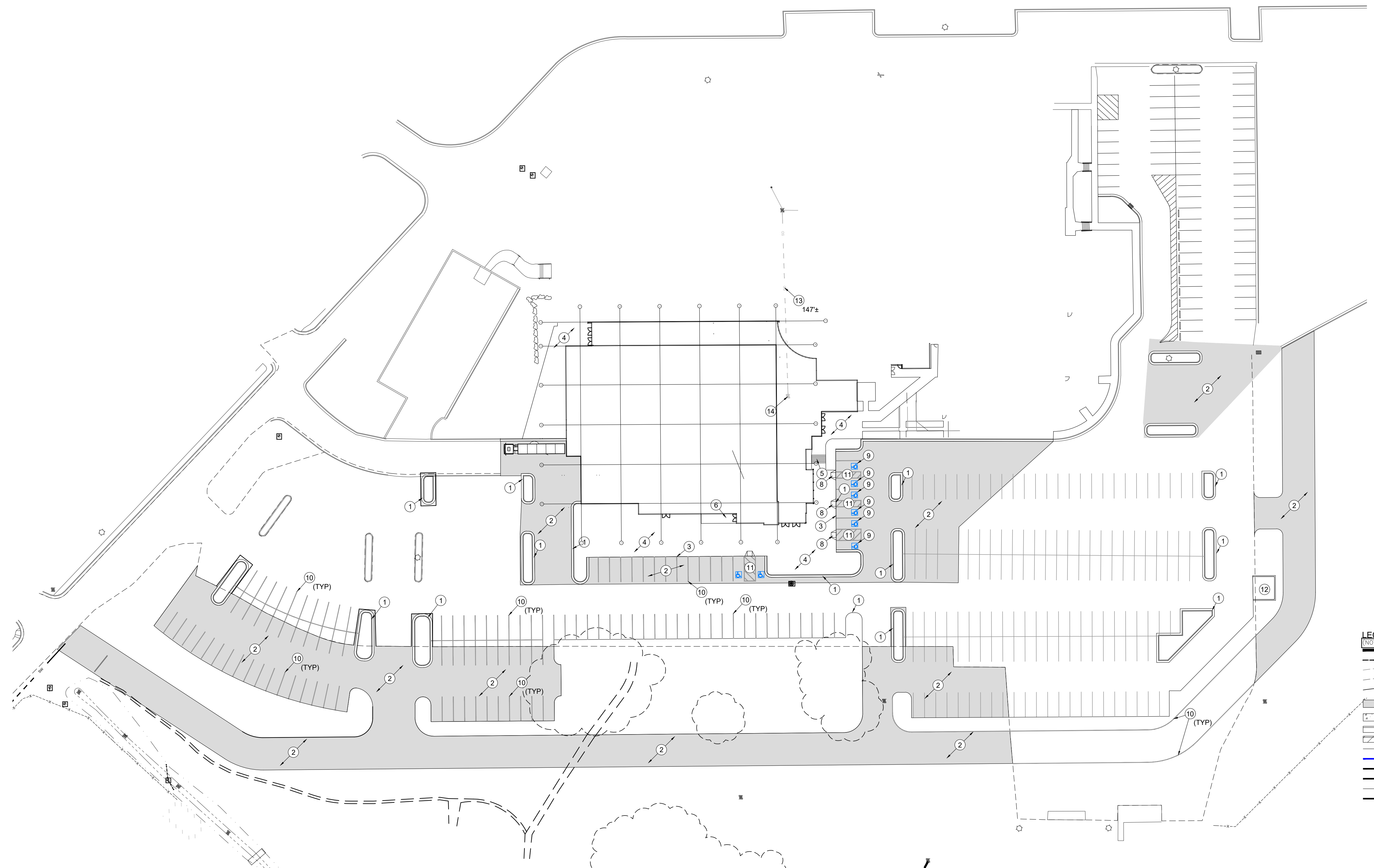
-  EXISTING SITE IMPROVEMENTS TO BE DEMOLISHED
-  EXISTING LANDSCAPE / FIELD AREA TO BE DEMOLISHED
-  EXISTING ASPHALT PAVING TO BE DEMOLISHED

PRELIMINARY
NOT FOR CONSTRUCTION



REV	DATE	DESCRIPTION

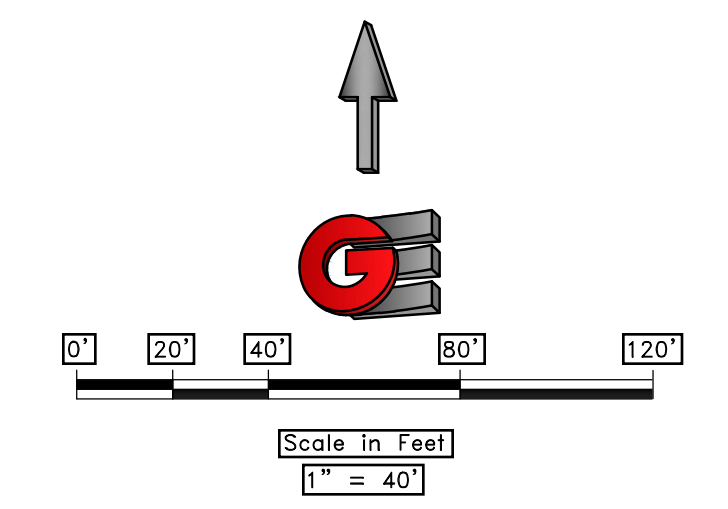
- SITE PLAN KEY NOTES**
- 1 24" STANDARD CURB AND GUTTER.
 - 2 ASPHALT PAVING - SECTION 3" ASPHALT OVER 5" ROAD BASE, 8" GRANULAR BORROW
 - 3 THICKENED EDGE CONCRETE SIDEWALK. (SEE DETAIL 16 ON SHEET CDT100)
 - 4 TYPICAL CONCRETE SIDEWALK. (SEE DETAIL 17 ON SHEET CDT100)
 - 5 CONCRETE STAIRS (SEE ARCHITECTURAL PLANS)
 - 6 CONCRETE RAMP (SEE ARCHITECTURAL PLANS)
 - 7 CONCRETE RETAINING WALL
 - 8 TYPICAL ADA RAMP (SEE DETAIL 8 ON SHEET CDT100)
 - 9 ADA PARKING SYMBOL.
 - 10 TYPICAL PARKING STRIPING TO BE 4" WHITE.
 - 11 TYPICAL NO PARKING STRIPING (SEE DETAIL 11 ON SHEET CDT100)
 - 12 DUMPSTER ENCLOSURE. (SEE ARCHITECTURAL PLANS)
 - 13 EXISTING STORM DRAIN LINE TO BE ROUTED UNDER BUILDING
 - 14 EXISTING STORM DRAIN STRUCTURE TO BE REROUTED UNDER BUILDING (SEE UTILITY PLANS/PLUMBING PLANS)



PRELIMINARY
NOT FOR CONSTRUCTION

LEGEND
(NOTE: ALL LINES OR SYMBOLS MAY NOT APPEAR ON EACH SHEET)

SYMBOL	DESCRIPTION
--- (dashed)	BOUNDARY LINE
--- (dotted)	NEW CHAINLINK FENCE
--- (dash-dot)	EXISTING 1' CONTOUR AND ELEVATION
--- (long-dash)	EXISTING 5' CONTOUR AND ELEVATION
--- (short-dash)	DESIGN CONTOUR AND ELEVATION
--- (hatched)	STANDARD ASPHALT PAVING
--- (diagonal lines)	CONCRETE SIDEWALK
--- (solid)	NEW 24" CURB AND GUTTER
--- (dashed)	NEW 24" OPEN FACE CURB AND GUTTER
--- (solid)	EXISTING WATER LINE
--- (solid)	NEW CULINARY WATER LINE
--- (dashed)	EXISTING STORM DRAIN LINE
--- (dashed)	NEW STORM DRAIN LINE
--- (dashed)	EXISTING SANITARY SEWER LINE
--- (dashed)	NEW SANITARY SEWER LINE
--- (solid)	NEW WATER VALVE
--- (solid)	STORM DRAIN CATCH BASIN
--- (solid)	STORM DRAIN JUNCTION BOX
--- (solid)	NYOPLAST INLINE DRAIN
--- (solid)	NEW SANITARY SEWER MANHOLE



SEAL:

REV	DATE	DESCRIPTION

PROJECT: A Sanctuary Expansion for
Washington Heights Church
1770 E 6200 S
Ogden, UT, 84405

MOUNTAIN WEST ARCHITECTURE 1542 25TH STREET - OGDEN, UTAH 84401 | PH: 801-388-6052 | www.mountainwestarchitecture.com

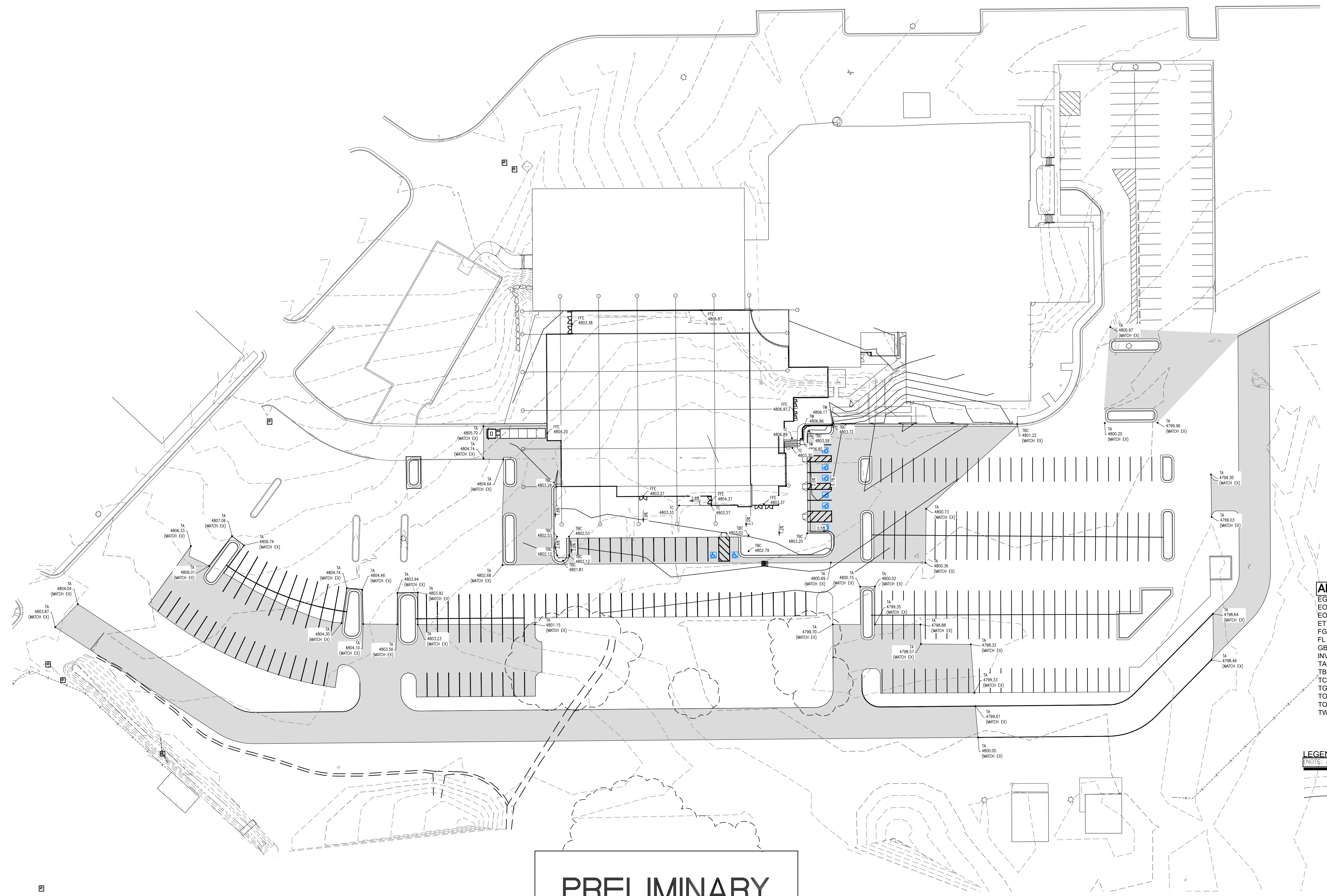
ISSUE DATE: 8/11/2023

SHEET TITLE: **SITE GRADING**

PROJECT: AC-161

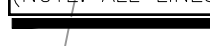





SHEET NUMBER: **CE3-01**

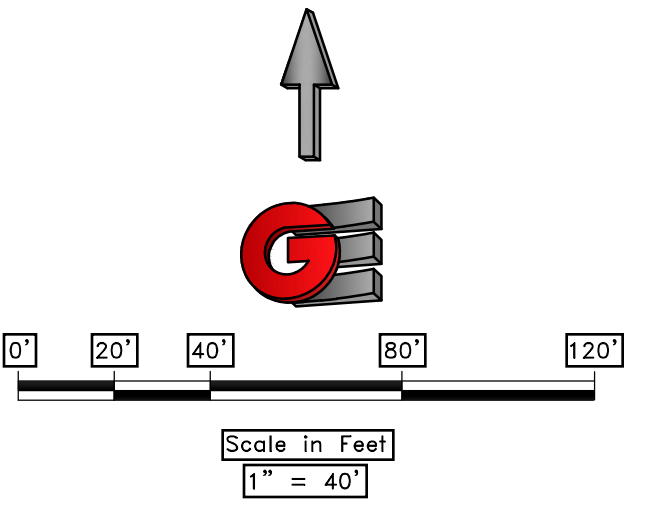
DO NOT SCALE DRAWING

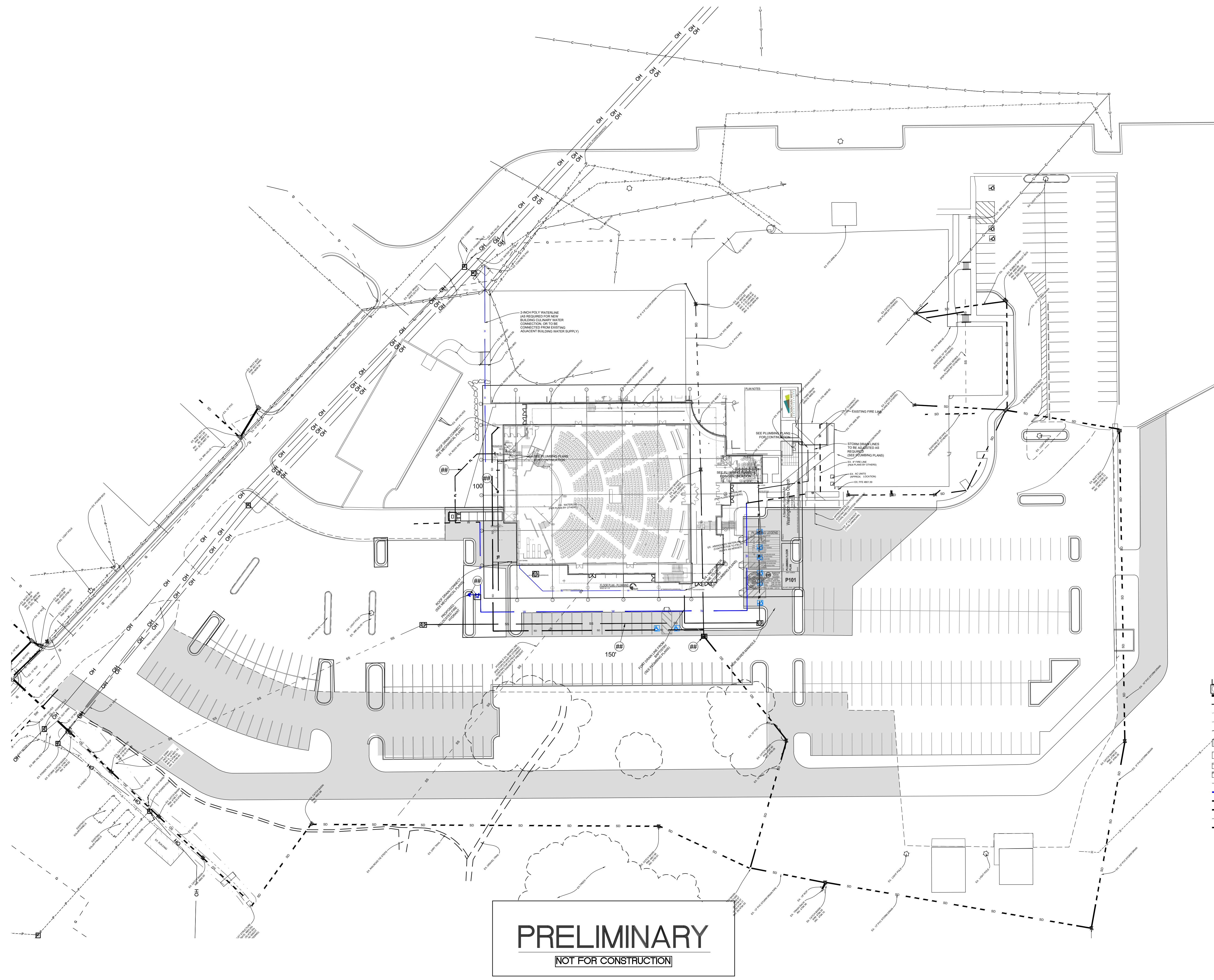


PRELIMINARY
NOT FOR CONSTRUCTION

- ABBREVIATIONS:**
- EG - EXISTING GROUND
 - EOA - EDGE OF ASPHALT
 - ECC - EDGE OF CONCRETE
 - ET - EDGE OF TURF
 - FG - FINISH GRADE
 - FL - FLOWLINE
 - GB - GRADE BREAK
 - INV - INVERT
 - TA - TOP OF ASPHALT
 - TBC - TOP BACK OF CURB
 - TC - TOP OF CONCRETE
 - TG - TOP OF GRATE
 - TOE - TOP OF SLOPE
 - TOP - TOP OF SLOPE
 - TW - TOP OF WALL

- LEGEND**
(NOTE: ALL LINES OR SYMBOLS MAY NOT APPEAR ON EACH SHEET)
-  BOUNDARY LINE
 -  EXISTING 1' CONTOUR AND ELEVATION
 -  EXISTING 5' CONTOUR AND ELEVATION
 -  DESIGN CONTOUR AND ELEVATION
 -  NEW SPOT ELEVATION
 -  DRAINAGE DIRECTION LABEL



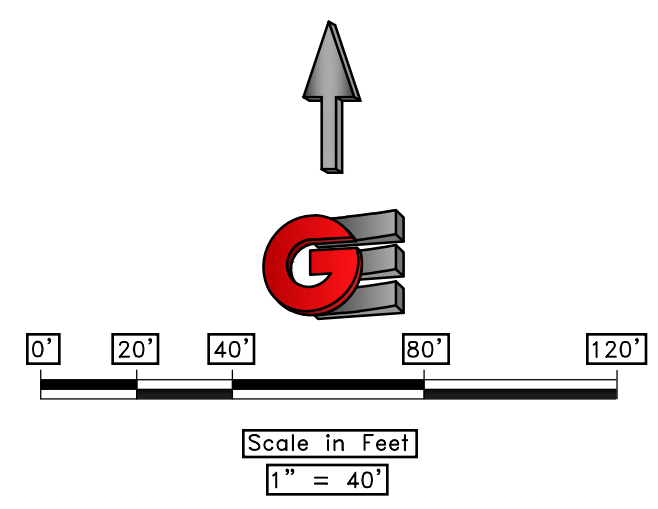


PRELIMINARY
NOT FOR CONSTRUCTION

- SITE PLAN KEY NOTES**
- 1 24" STANDARD CURB AND GUTTER.
 - 2 ASPHALT PAVING - SECTION 3" ASPHALT OVER 5" ROAD BASE, 8" GRANULAR BORROW
 - 3 THICKENED EDGE CONCRETE SIDEWALK. (SEE DETAIL 16 ON SHEET CDT100)
 - 4 TYPICAL CONCRETE SIDEWALK. (SEE DETAIL 17 ON SHEET CDT100)
 - 5 CONCRETE STAIRS (SEE ARCHITECTURAL PLANS)
 - 6 CONCRETE RAMP (SEE ARCHITECTURAL PLANS)
 - 7 CONCRETE RETAINING WALL
 - 8 TYPICAL ADA RAMP (SEE DETAIL 8 ON SHEET CDT100)
 - 9 ADA PARKING SYMBOL.
 - 10 TYPICAL PARKING STRIPING TO BE 4" WHITE.
 - 11 TYPICAL NO PARKING STRIPING (SEE DETAIL 11 ON SHEET CDT100)
 - 12 DUMPSTER ENCLOSURE. (SEE ARCHITECTURAL PLANS)
 - 13 EXISTING CULINARY WATER LINE TO BE REMOVED
 - 14 CONNECT NEW 6"Ø C-900 PVC WATER LINE TO EXISTING WATER MAIN
 - 15 RELOCATED FIRE HYDRANT ASSEMBLY
 - 16 NEW 4"Ø C-900 PVC FIRE LINE
 - 17 EXISTING SAN SEWER LINE TO BE REMOVED
 - 18 EXISTING STORM DRAIN CATCH BASIN TO BE REMOVED
 - 19 EXISTING STORM DRAIN LINE TO BE REMOVED
 - 20 NEW 4"Ø PVC SEWER LATERAL
 - 21 NEW 5'Ø STORM DRAIN MANHOLE

LEGEND
(NOTE: ALL LINES OR SYMBOLS MAY NOT APPEAR ON EACH SHEET)

	BOUNDARY LINE
	NEW CHAINLINK FENCE
	EXISTING 1' CONTOUR AND ELEVATION
	EXISTING 5' CONTOUR AND ELEVATION
	DESIGN CONTOUR AND ELEVATION
	STANDARD ASPHALT PAVING
	CONCRETE SIDEWALK
	NEW 24" CURB AND GUTTER
	NEW 24" OPEN FACE CURB AND GUTTER
	EXISTING WATER LINE
	NEW CULINARY WATER LINE
	EXISTING STORM DRAIN LINE
	NEW STORM DRAIN LINE
	EXISTING SANITARY SEWER LINE
	NEW SANITARY SEWER LINE
	NEW WATER VALVE
	STORM DRAIN CATCH BASIN
	STORM DRAIN JUNCTION BOX
	NYOPLAST INLINE DRAIN
	NEW SANITARY SEWER MANHOLE



SEAL:

REV	DATE	DESCRIPTION

A Sanctuary Expansion for
Washington Heights Church
1770 E 6200 S
Ogden, UT, 84405

PROJECT:

ISSUE DATE: 8/11/2023
CIVIL UTILITY PLAN

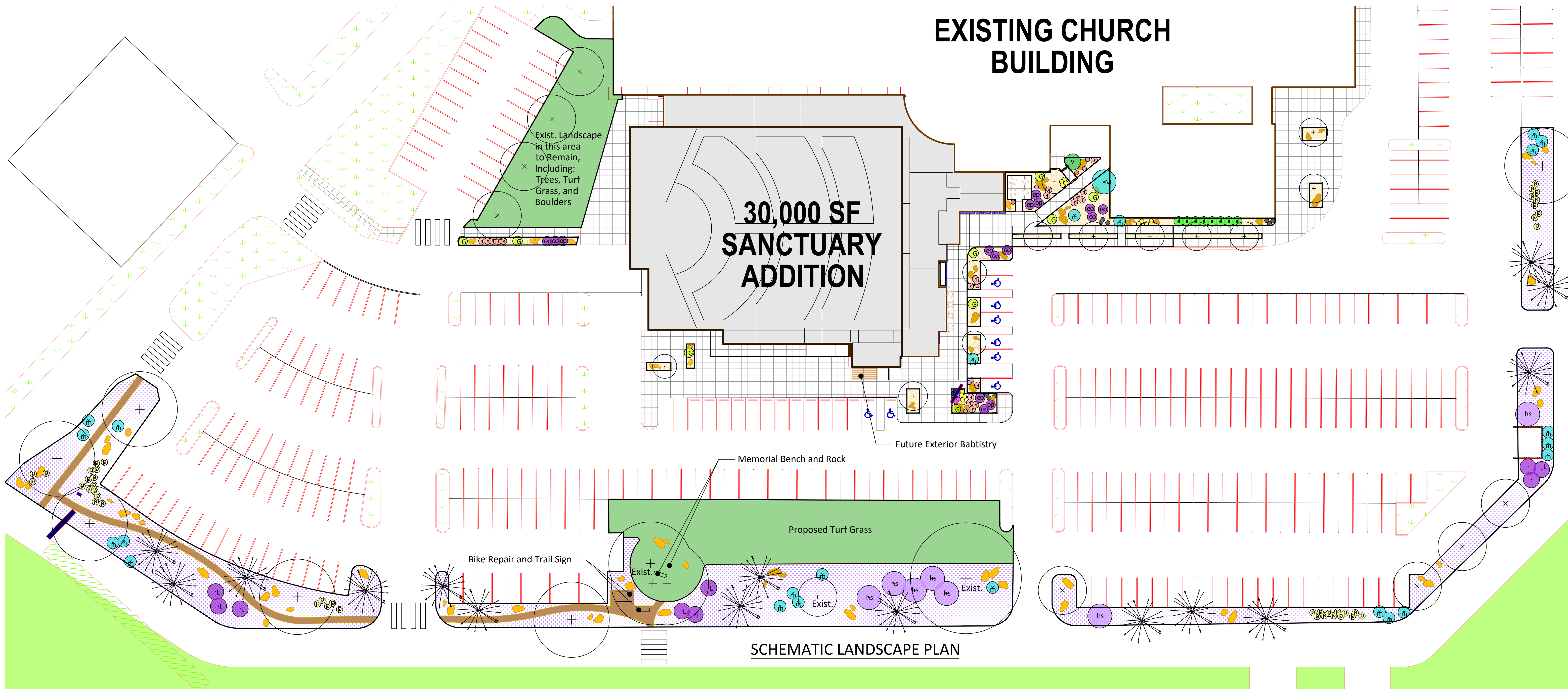
SHEET NUMBER:

CE4-01

DO NOT SCALE DRAWING

MOUNTAIN WEST ARCHITECTURE | 1542 25TH STREET - OGDEN, UTAH 84401 | PH: 801-388-6052 | WWW.MOUNTAINWESTARCHITECTURE.COM

EXISTING CHURCH BUILDING



PLANTING LEGEND

TREES

SYMBOL	BOTANICAL NAME	COMMON NAME	SIZE	QTY. +/-	TYPE	REMARKS
	<i>Crataegus x lavallei</i>	Lavalle Hawthorne	2" Cal.	8	Deciduous	Waterwise
	<i>Gleditsia triacanthos inermis</i>	Honeylocust	2" Cal.	4	Deciduous	Waterwise
	<i>Malus sp. 'Spring Snow'</i>	'Spring Snow' Crabapple	2" Cal.	4	Deciduous	Waterwise
	<i>Pinus ponderosa</i>	Ponderosa Pine	6'	15	Evergreen	Waterwise
	<i>Populus deltoides</i>	Cottonless Cottonwood	2" Cal.	6	Deciduous	Waterwise

SHRUBS/PERENNIALS

SYMBOL	BOTANICAL NAME	COMMON NAME	SIZE	QTY. +/-	TYPE	REMARKS
	<i>Cornus sericea</i>	Red Twig Dogwood	5 Gal.	8	Deciduous	Waterwise
	Perennials	(Various)	3 Gal.	32	Perennial	Waterwise
	<i>Lonicera japonica 'Purpurea'</i>	Honeysuckle	5 Gal.	7	Deciduous	Waterwise
	<i>Miscanthus sinensis 'Gracillimus'</i>	Maiden Grass	5 Gal.	9	Grass	Waterwise
	<i>Pinus mugo 'Pumilio'</i>	Dwarf Mugo Pine	5 Gal.	23	Evergreen	Waterwise
	<i>Pinus mugo 'Tannenbaum'</i>	Mugo Pine	5 Gal.	1	Evergreen	Waterwise
	<i>Potentilla fruticosa 'Goldfinger'</i>	Potentilla	5 Gal.	39	Deciduous	Waterwise
	<i>Prunus x cistena</i>	Cistena Plum	5 Gal.	15	Deciduous	Waterwise
	<i>Rosa 'WEKPhorn' Pink Home Run</i>	Pink Shrub Rose	5 Gal.	20	Deciduous	Waterwise
	<i>Syringa vulgaris</i>	Lilac	5 Gal.	9	Deciduous	Waterwise
	<i>Viburnum x Rhytidophylloides</i>	Leatherleaf Viburnum	5 Gal.	1	Deciduous	Waterwise

MISCELLANEOUS

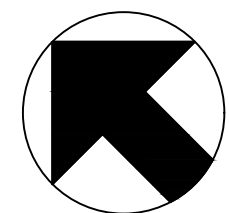
	3" depth min. 2" to 4" River Rock Mulch
	Great Basin Wildflower Blend
	Gravel Trail
	Ryerson Steel Edging - see specifications
	Boulders

At Washington Heights Church, the existing landscape is very beautiful and inviting. Upon analysis, it appears that the appeal comes from several factors, including: the location at the top of Washington Boulevard, the open expansiveness of the site, the beautiful architecture and outdoor spaces, the natural connection of the site with the surrounding nature, the generous use of boulders in the landscape, and of course, the very uplifting nature of a devoted church.

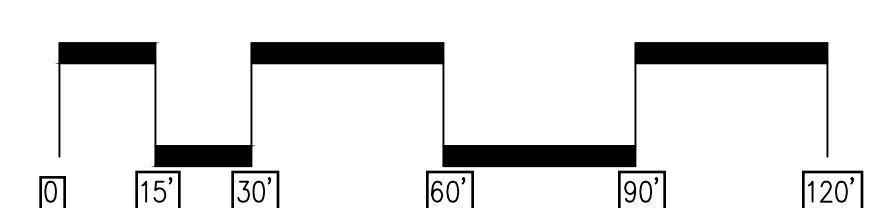
In designing the landscape for the addition, strong focus is given to keeping with these themes, and working to promote them further if possible. Specifically it entails:

1. Continuing the use of large boulders throughout the landscape. These boulders set a very powerful theme, and are conducive to a spiritual institution.
2. Bringing in a lot of flowering plants, for their beauty and aromatic features. Flowers are also always conducive to, and welcome at spiritual institutions.
3. Use of seed mixes. Weber County Zoning requirements only allow a maximum of 50% turf grass. This has been maximized in the design, and a wildflower seed mix has been utilized to provide a rich landscape for expansive outlying areas where drip irrigation would not be practical.
4. Evergreens have been carefully incorporated to provide year-round appeal in the landscape.
5. For the inner pedestrian areas, close to the buildings, a decorative gravel base has been incorporated, to match the existing, and to utilize drip irrigation. The plants in these areas have been chosen, again, for their flowering and other interesting features, such as the Leatherleaf Viburnum with its unique leaf texture, Hawthorne trees with their dichotomy of thorns and flowers, evergreens with their year round constancy, and perennials with their exuberant beauty.

NORTH



SCALE



GARDNER ENGINEERING
 CIVIL • LAND PLANNING
 MUNICIPAL • LAND SURVEYING
 1800 W. 2100 S. WEST HAVEN, UT 84008
 P. 801.476.0202 F. 801.476.0066
 Design by: Jeff Scarborough, RLA

REV#	DATE	DESCRIPTION

A Sanctuary Expansion for
Washington Heights Church
 1770 E 6200 S
 Ogden, UT, 84405
 MOUNTAIN WEST ARCHITECTURE | 543 25TH STREET - OGDEN, UTAH 84401 | PH: 801-388-6032 | www.mountainwestarchitecture.com

SHEET TITLE:
SCH. LANDSCAPE PLAN
 DATE: 8-10-2023
 SHEET NUMBER:
L-SCH
 DO NOT SCALE DRAWING