

PART OF THE SE. 1/4, OF SECTION 7, T.7N., R.1E., S.L.B. & M
 HADLOCK SUBDIVISION 1ST AMENDMENT

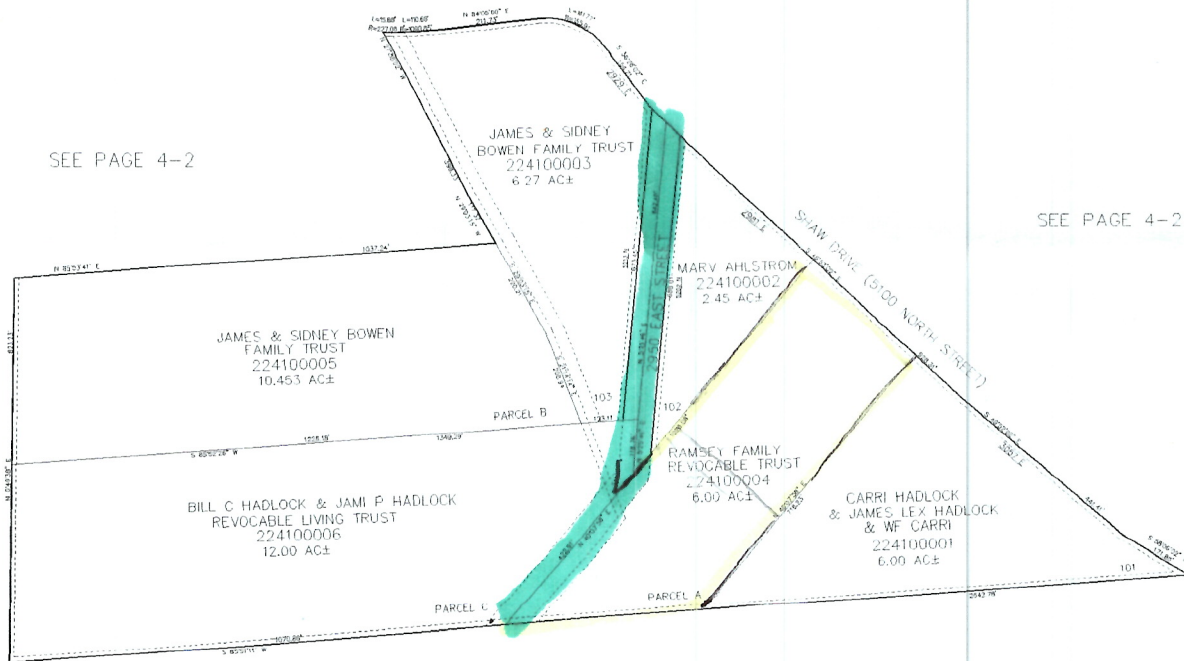
TAXING UNIT: 36

IN WEBER COUNTY

SCALE 1" = 200'

SEE PAGE 4-2

SEE PAGE 4-2



SEE PAGE 8

10' UTILITY & DRAINAGE EASEMENTS EACH SIDE OF PROPERTY LINES AS INDICATED BY DASHED LINES EXCEPT AS OTHERWISE SHOWN.

FOR COMPLETE SURVEY DATA SEE ORIGINAL DEDICATION PLAT IN BOOK 94, PAGE 27-28 OF RECORDS.