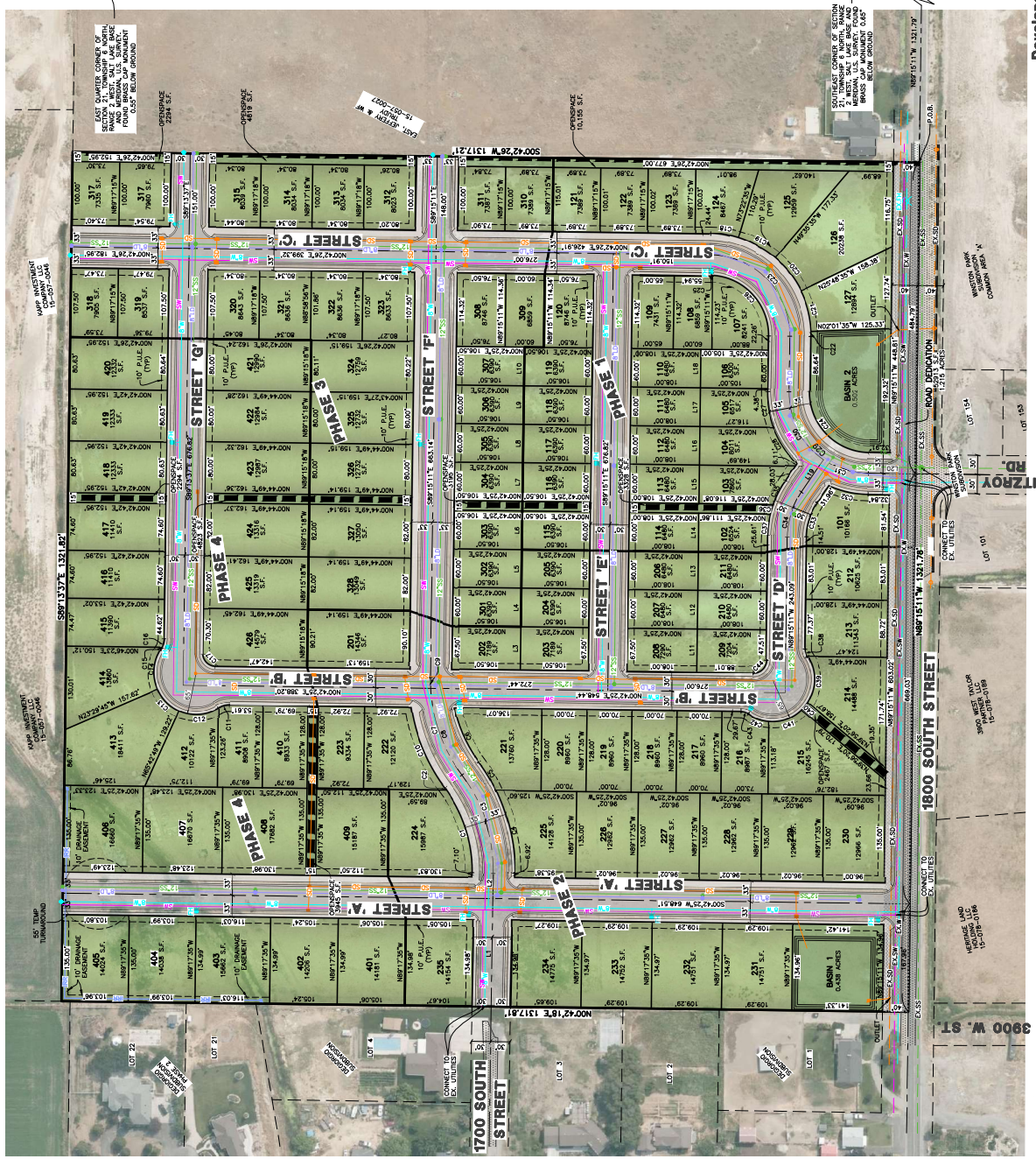


DATE	DESCRIPTION
7-26-23	LOT LAYOUT REVISIONS
8-17-23	LOT LAYOUT REVISIONS
2-28-24	COUNTY COMMENTS

**Preliminary Plan**  
 PART OF THE SE 1/4 OF SECTION 21 T16N, R23W, S18B & M. U.S. SURVEY  
**Stagecoach Estates Subdivision**

<b>Project Info:</b>	Engineer: Reeve & Associates, Inc.
Planner: C. Coe	Designer: E. Roche
Date: 8/01/2022	Name: STAGECOACH ESTATES
Subdivision:	Number: 6288-114
Sheet: <b>1</b>	Sheets: <b>2</b>



**Developer:**  
 Pat Burns  
 Lync Development  
 1407 N Mtn. Rd  
 Ogden, UT 84404  
 (801) 710-2234

# Stagecoach Estates Subdivision

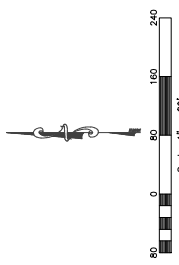
Weber County, Utah

## LEGEND

- ▲ SECTION CORNER
- BOUNDARY LINE
- LOT LINE
- ADJOINING PROPERTY
- CENTERLINE
- EASEMENTS
- SECTION TIE LINE
- PROPOSED SANITARY SEWER LINE
- EXISTING SANITARY SEWER LINE
- PROPOSED SECONDARY WATER LINE
- PROPOSED CULINARY WATER LINE (SIZE VARIES)
- EX-SW — EXISTING CULINARY WATER LINE
- EX-W — PROPOSED STORM DRAIN (SIZE VARIES)
- EX-SD — EXISTING STORM DRAIN
- PROPOSED STORM DRAIN (SIZE VARIES)
- PROPOSED RE-ROUTED SLOUGH
- EXISTING FENCE LINE
- PROPOSED TRAIL
- PROPOSED FIRE HYDRANT
- EXISTING FIRE HYDRANT
- PROPOSED SANITARY SERVICE MANHOLE
- EXISTING SANITARY SERVICE/STORM DRAIN MANHOLE
- PLUS W/ 2" BLOW-OFF
- PROPOSED STORM DRAIN MANHOLE
- PROPOSED SINGLE GRAVE WATCH BASIN WITH BICYCLE-SAFE GRATE
- P.U.E. — PUBLIC UTILITY EASEMENT
- FH — FIRE HYDRANT
- EXFH — EXISTING FIRE HYDRANT
- EXISTING PAVEMENT
- PROPOSED PAVEMENT
- PROPOSED CONCRETE
- ROAD DEDICATION

## NOTES

1. FOR EXISTING PAVEMENT ON 1800 SOUTH STREET, SEE SHEET 6288-113.
  2. PROJECT IS IN ZONE 1 FROM FLOOD PANEL.
  3. EXISTING 18" DRAINAGE SLOUGH WILL BE RE-ROUTED.
  4. DRAINAGE SLOUGH WILL BE RE-ROUTED.
- PHASE 1: 25 LOTS  
 PHASE 2: 25 LOTS  
 PHASE 3: 25 LOTS  
 PHASE 4: 25 LOTS  
 TOTAL LOTS: 116



Reeve & Associates, Inc. • Salt Lake City, Utah

THESE PLANS AND SPECIFICATIONS ARE THE PROPERTY OF REEVE & ASSOCIATES, INC. NO PART OF THESE PLANS OR SPECIFICATIONS ARE TO BE REPRODUCED, COPIED, OR TRANSMITTED IN ANY FORM OR BY ANY MEANS, ELECTRONIC OR MECHANICAL, INCLUDING PHOTOCOPYING, RECORDING, OR BY ANY INFORMATION STORAGE AND RETRIEVAL SYSTEM, WITHOUT THE WRITTEN PERMISSION OF REEVE & ASSOCIATES, INC. A DISCLAIMER OF LIABILITY FOR ANY CHANGES OR MODIFICATIONS MADE TO THESE PLANS OR THE DESIGN THEREON WITHOUT THEIR CONSENT.

