

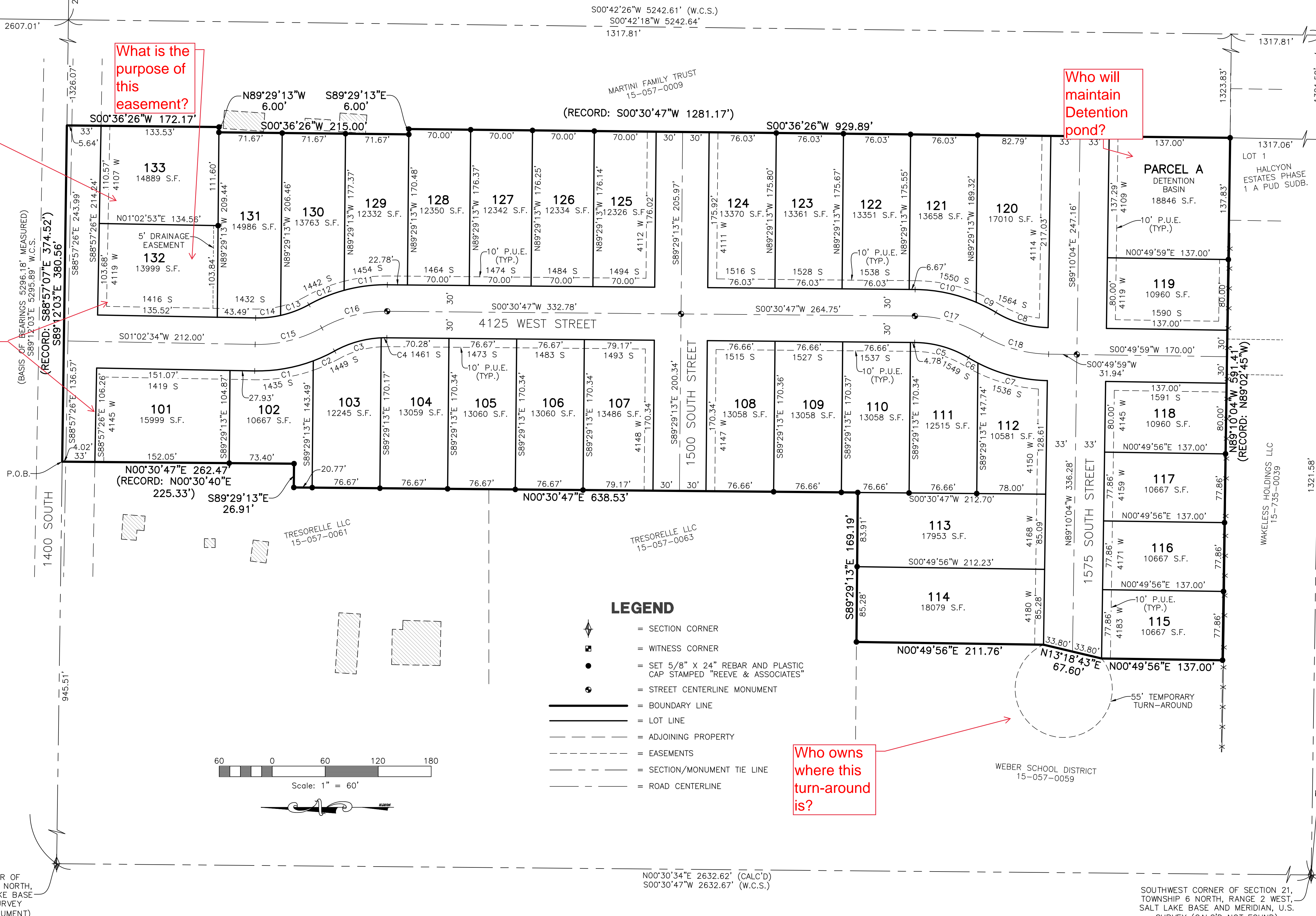
# ANSEMI ACRES SUBDIVISION PHASE 1

PART OF THE SOUTHWEST QUARTER OF SECTION 21, TOWNSHIP 6 NORTH, RANGE 2 WEST, SALT LAKE BASE & MERIDIAN, U.S. SURVEY  
WEBER COUNTY, UTAH  
JUNE, 2023

EAST QUARTER CORNER OF SECTION 21, TOWNSHIP 6 NORTH, RANGE 2 WEST, SALT LAKE BASE AND MERIDIAN, U.S. SURVEY (FOUND BRASS CAP MONUMENT 0.55' UNDER RING AND LID) SEE MONUMENT DETAIL 1

NORTH QUARTER CORNER OF SECTION 21, TOWNSHIP 6 NORTH, RANGE 2 WEST, SALT LAKE BASE AND MERIDIAN, U.S. SURVEY (FOUND BRASS CAP MONUMENT 0.44' UNDER RING AND LID) SEE MONUMENT DETAIL 4

SOUTH QUARTER CORNER OF SECTION 21, TOWNSHIP 6 NORTH, RANGE 2 WEST, SALT LAKE BASE AND MERIDIAN, U.S. SURVEY (FOUND BRASS CAP MONUMENT 0.44' UNDER RING AND LID) SEE MONUMENT DETAIL 4



What is the purpose of this easement?

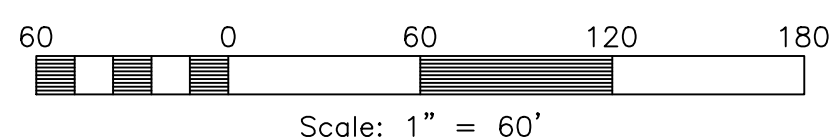
Who will maintain Detention pond?

Add no Access line.

Who owns where this turn-around is?

### LEGEND

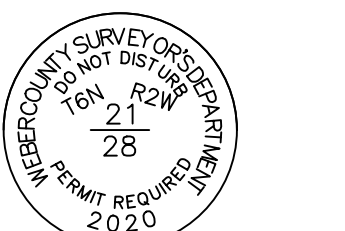
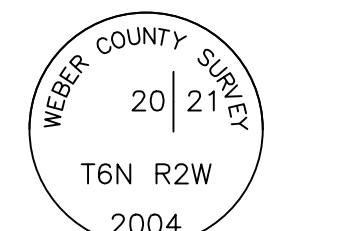
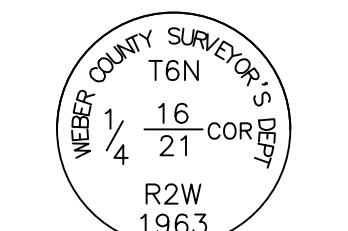
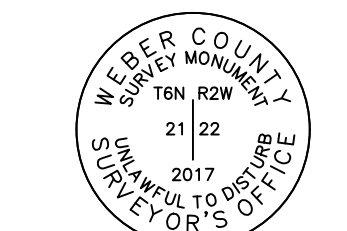
- ◆ = SECTION CORNER
- = WITNESS CORNER
- = SET 5/8" X 24" REBAR AND PLASTIC CAP STAMPED "REEVE & ASSOCIATES"
- = STREET CENTERLINE MONUMENT
- = BOUNDARY LINE
- = LOT LINE
- - - = ADJOINING PROPERTY
- - - = EASEMENTS
- - - = SECTION/MONUMENT TIE LINE
- - - = ROAD CENTERLINE



WEST QUARTER CORNER OF SECTION 21, TOWNSHIP 6 NORTH, RANGE 2 WEST, SALT LAKE BASE AND MERIDIAN, U.S. SURVEY (FOUND BRASS CAP MONUMENT) SEE MONUMENT DETAIL 3

WITNESS CORNER TO THE SOUTHWEST CORNER OF SECTION 21, TOWNSHIP 6 NORTH, RANGE 2 WEST, SALT LAKE BASE AND MERIDIAN, U.S. SURVEY (FOUND BRASS CAP MONUMENT) SEE MONUMENT DETAIL 5

WITNESS CORNER TO THE SOUTHWEST CORNER OF SECTION 21, TOWNSHIP 6 NORTH, RANGE 2 WEST, SALT LAKE BASE AND MERIDIAN, U.S. SURVEY (FOUND BRASS CAP MONUMENT) SEE MONUMENT DETAIL 6



MONUMENT DETAIL 1 (NOT TO SCALE)

MONUMENT DETAIL 2 (NOT TO SCALE)

MONUMENT DETAIL 3 (NOT TO SCALE)

MONUMENT DETAIL 4 (NOT TO SCALE)

MONUMENT DETAIL 5 (NOT TO SCALE)

MONUMENT DETAIL 6 (NOT TO SCALE)

5160 S 1500 W, RIVERDALE, UTAH 84405  
TEL: (801) 621-3100 FAX: (801) 621-2666 www.reeve.co

**Project Info.**

Surveyor: T. HATCH

Designer: N. ANDERSON

Begin Date: 4-3-2023

Name: ANSEMI ACRES SUBD. PHASE 1

Number: 7152-19

Revision:

Scale: 1"=60'

Checked:

**Weber County Recorder**

Entry No. \_\_\_\_\_ Fee Paid \_\_\_\_\_

At \_\_\_\_\_ Filed For Record \_\_\_\_\_

Of The Official Records, Page \_\_\_\_\_

Recorded For: \_\_\_\_\_

Weber County Recorder \_\_\_\_\_

Deputy: \_\_\_\_\_