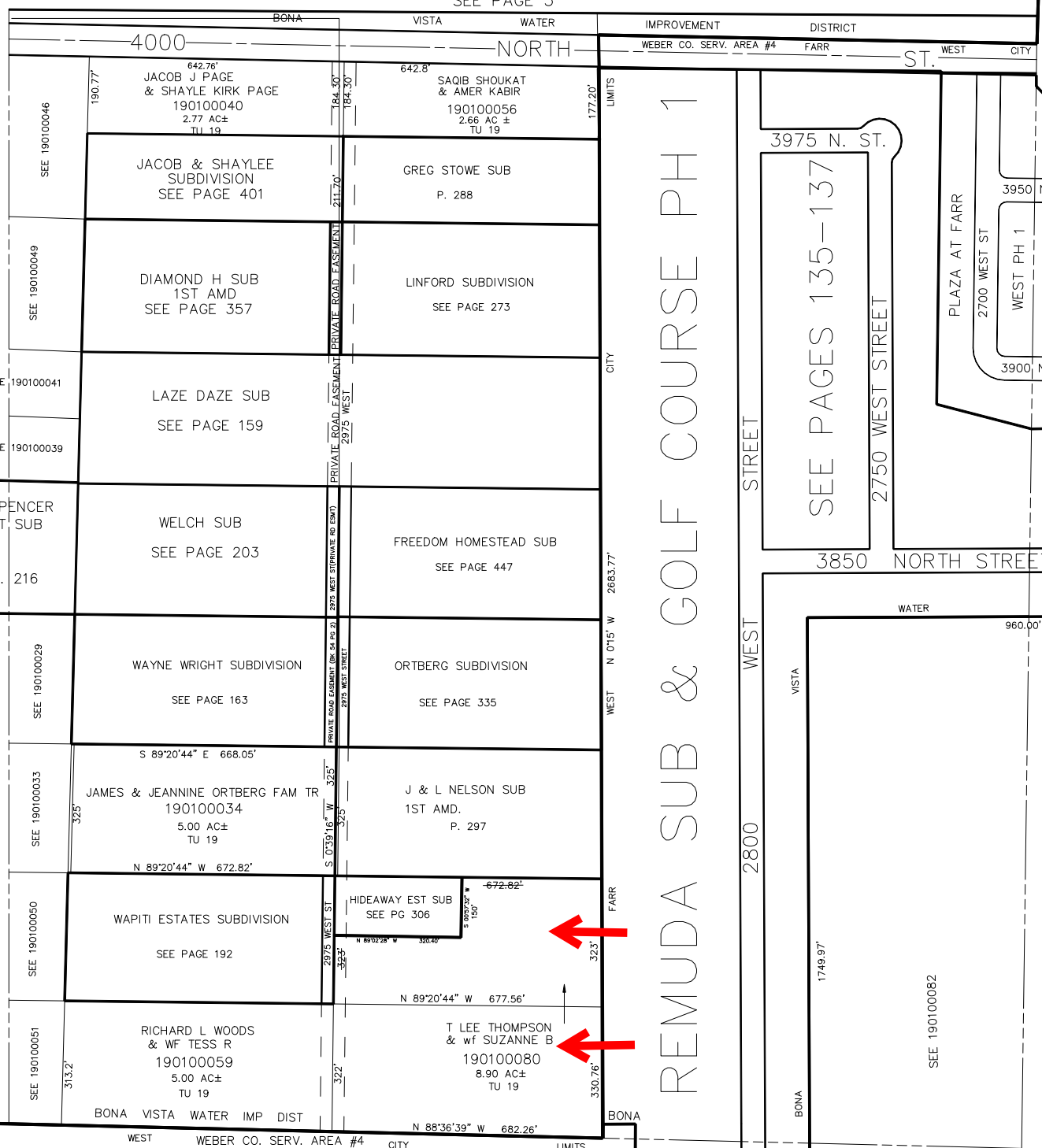


N.E. 1/4
SECTION 22, T.7N., R.2W., S.L.B. & M.

IN WEBER COUNTY
SCALE 1" = 200'
SEE PAGE 3

TAXING UNIT: 19, 307, 308



REMUDA SUB & GOLF COURSE PH 1

PLAIN CITY WEST WEBER CO. SERV. AREA #4 CITY LIMITS
FARR
19
LIMITS
REMUDA SUB AND GOLF COURSE PH 3
SEE P. 166 & 167
SEE PAGE 10
FOR TAX PURPOSES ONLY