



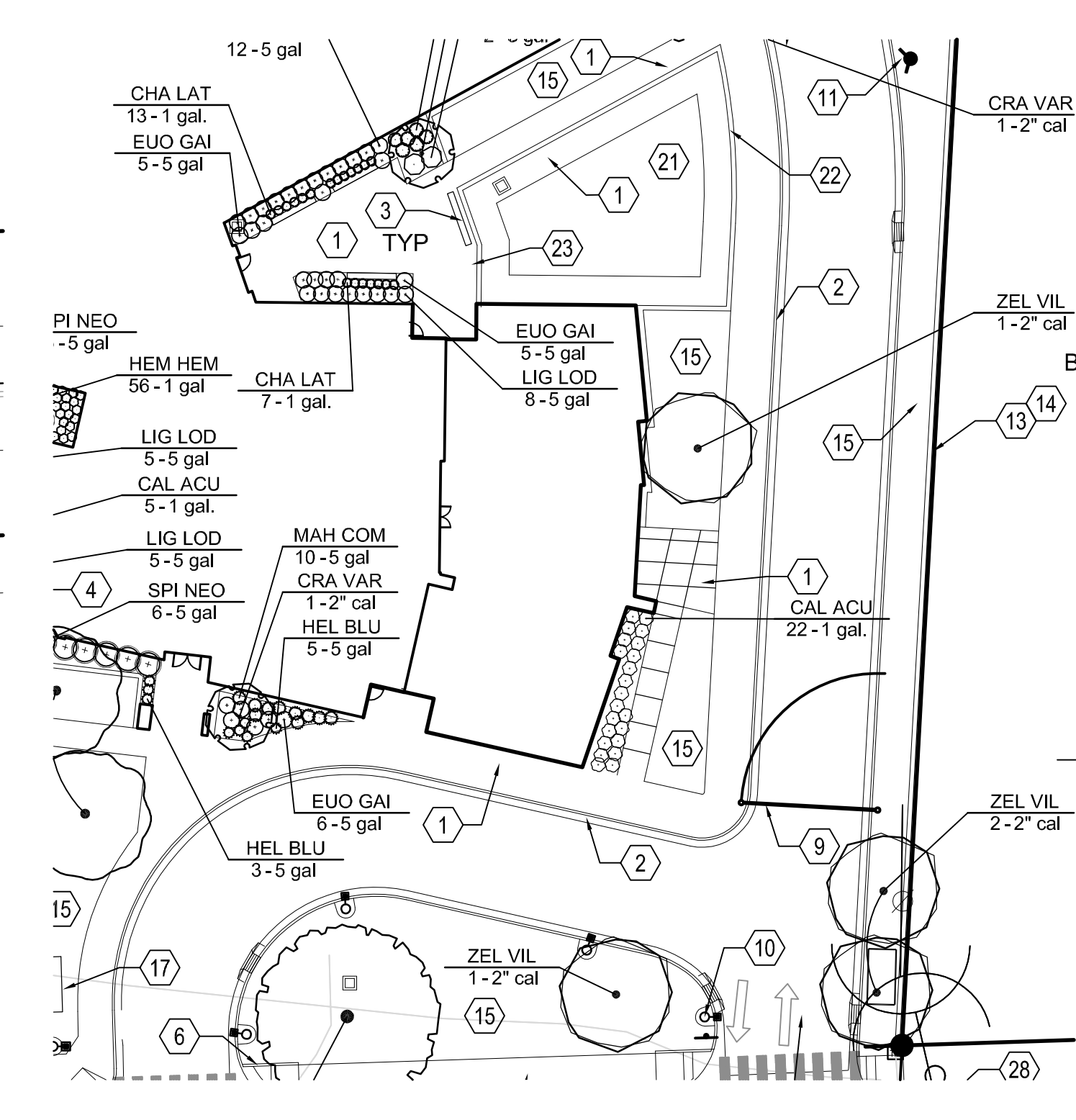
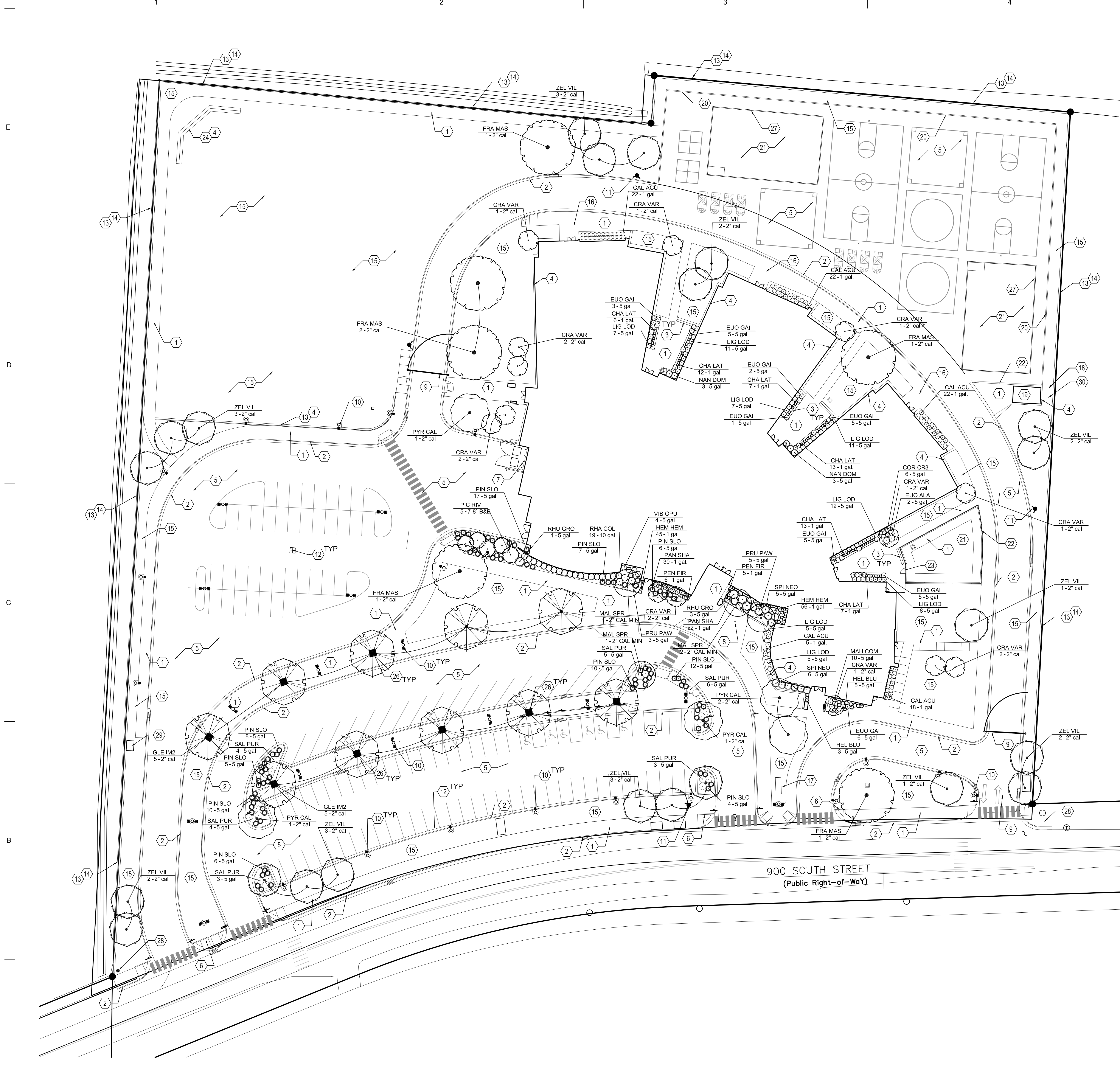
WEST WEBER ELEMENTARY

WEBER SCHOOL DISTRICT

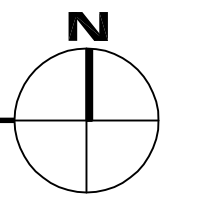
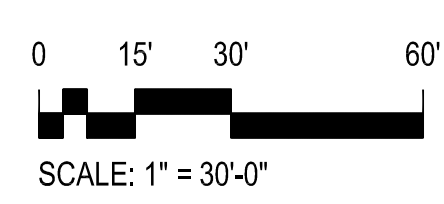
4000 SOUTH 2175 WESTROY, UT AND 84067

KEYNOTES

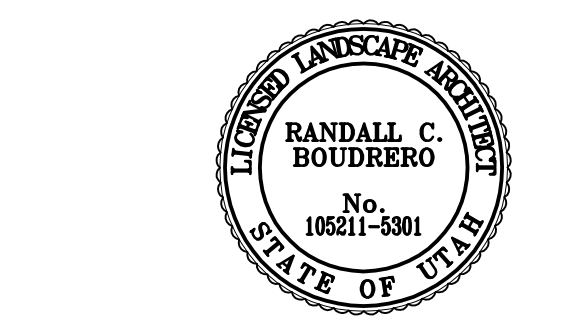
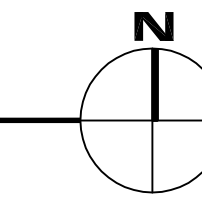
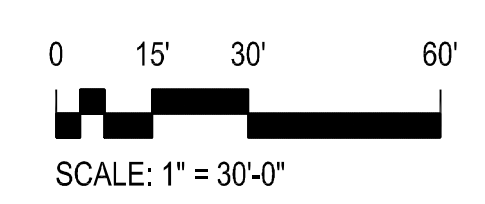
- 1 CONCRETE PAVING
- 2 CONCRETE CURB AND GUTTER
- 3 MASONRY SEAT WALL
- 4 CONCRETE MOWSTRIP
- 5 ASPHALT PAVING
- 6 CONCRETE CURB
- 7 DUMPSTER ENCLOSURE
- 8 FLAGPOLE
- 9 STEEL GATE
- 10 LIGHT POLE
- 11 FIRE HYDRANT
- 12 CATCH BASIN
- 13 CHAIN LINK FENCE
- 14 PROPERTY LINE
- 15 LAWN (SOD)
- 16 BUILDING CANOPY
- 17 FUTURE MARQUE SIGN LOCATION
- 18 FENCE ENCLOSURE & GATE WITH VINYL CHAIN LINK WITH 3/8" MESH
- 19 STORAGE BUILDING
- 20 CONCRETE HEADER
- 21 PLAYGROUND AREA
- 22 WROUGHT IRON FENCE
- 23 WROUGHT IRON GATE - 4' WIDE
- 24 CHAINLINK BACKSTOP
- 25 NOT USED
- 26 TREE GRATE
- 27 PLAYGROUND CURB
- 28 POWER POLE
- 29 UTILITY MANHOLE
- 30 GRAVEL PAVING



A1 LANDSCAPE PLANTING PLAN



A4 ALTERNATE LANDSCAPE PLANTING PLAN



MHTN PROJECT NO. 2013554.00
 DRAWN BY: V.G. CHECKED BY: R.B.
 ISSUED:

NO.	DATE	DESCRIPTION
1	JUNE 27, 2013	CONSTRUCTION DOCUMENTS

CONTRACTOR TO VERIFY DRAWINGS IN FIELD USE REFLECT LAST REVISION DATE:
 SHEET NAME
LANDSCAPE PLAN
 SHEET NUMBER

CONSTRUCTION DOCUMENTS

LP1.01

PLANT SCHEDULE

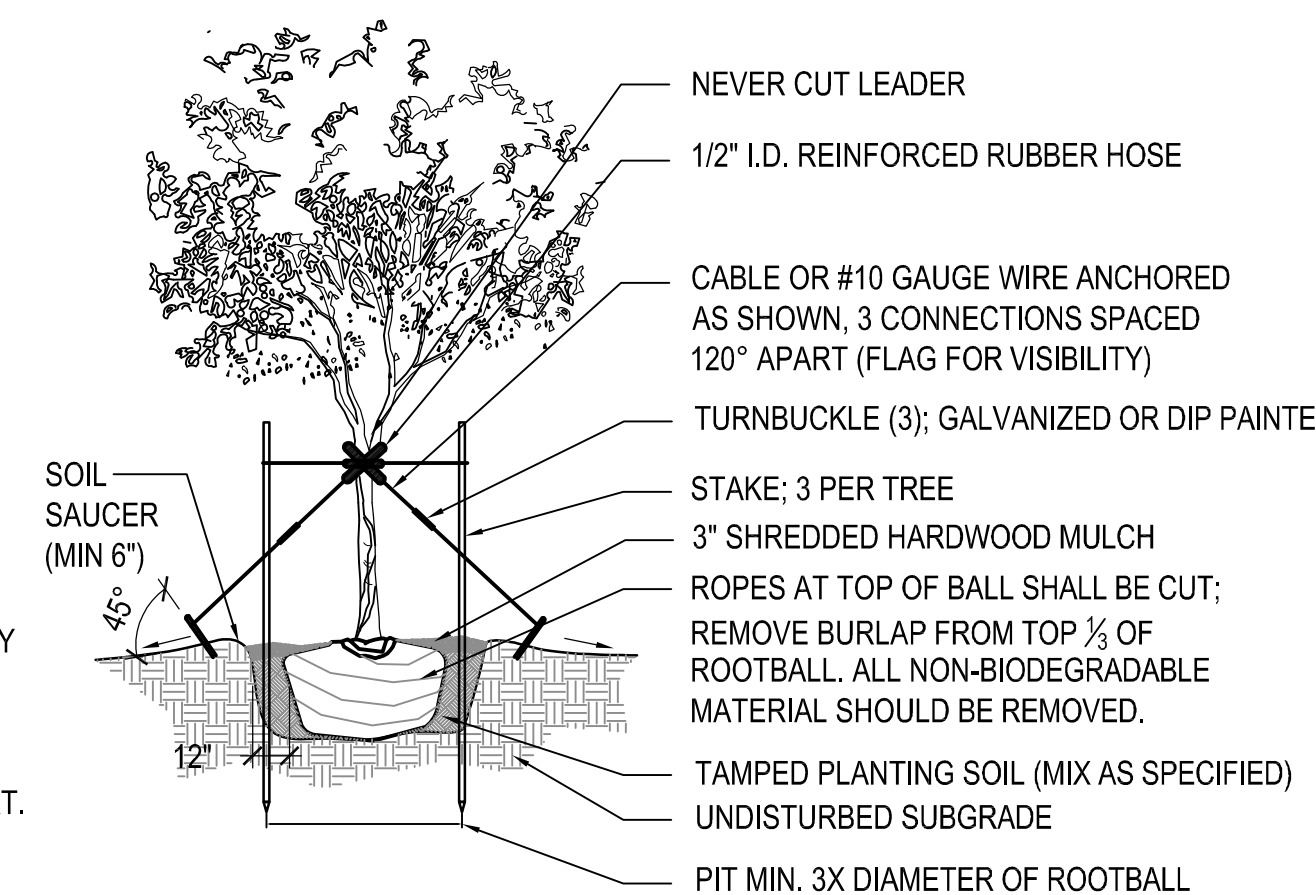
TREES	CODE	BOTANICAL NAME	COMMON NAME	CONT	CAL	REMARKS
	CRA VAR	Crataegus crus-galli inermis TM	Thornless Cockspur Hawthorn	2" cal		B&B - 4'-5' Branching height
	FRA MAS	Fraxinus pennsylvanica 'Marshall's Seedless'	Marshall's Seedless Ash	2" cal		B&B - 5' min. Branching height
	GLE IM2	Gleditsia triacanthos 'Imperial'	Imperial Honeylocust	2" cal		B&B - 5' min. Branching height
	MAL SPR	Malus x 'Spring Snow'	Spring Snow Crab Apple	2" CAL MIN	2" CAL. MIN.	B&B
	PIC RIV	Picea omorika 'Wells Riverside'	Wells Riverside Spruce	7-8'	B&B	
	PYR CAL	Pyrus calleryana 'Aristocrat' TM	Aristocrat Flowering Pear	2" cal		B&B
	ZEL VIL	Zelkova serrata 'Village Green'	Sawleaf Zelkova	2" cal		B&B

SHRUBS	CODE	BOTANICAL NAME	COMMON NAME	CONT	REMARKS
	CAL ACU	Calamagrostis acutifolia 'Karl Foerster'	Foerster's Reed Grass	1 gal.	
	CHA LAT	Chasmanthium latifolium	Wood Oats	1 gal.	
	COR CR3	Cornus alba 'Cream Cracker'	Cream Cracker Dogwood	5 gal	
	EUO ALA	Euonymus alatus 'Compactus'	Compact Burning Bush	5 gal	
	EUO GAI	Euonymus fortunei 'Emerald Gaiety' TM	Emerald Gaiety Euonymus	5 gal	
	HEL BLU	Helictotrichon sempervirens 'Blue Oats'	Blue Oat Grass	5 gal	
	LIG LOD	Ligustrum vulgare 'Lodense'	Lodense Privet	5 gal	
	MAH COM	Mahonia aquifolium 'Compacta'	Compact Oregon Grape	5 gal	
	NAN DOM	Nandina domestica	Heavenly Bamboo	5 gal	
	PAN SHA	Panicum virgatum 'Shenendoah'	Burgundy Switch Grass	1 gal.	
	PIN SLO	Pinus mugo 'Slowmound'	Mugo Pine	5 gal	
	PRU PAW	Prunus besseyi 'Pawnee Buttes'	Sand Cherry	5 gal	
	RHA COL	Rhamnus frangula 'Columnaris'	Alder Buckthorn	10 gal	
	RHU GRO	Rhus aromatica 'Gro-Low'	Gro-Low Fragrant Sumac	5 gal	
	SAL PUR	Salix purpurea 'Nana'	Dwarf Arctic Willow	5 gal	
	SPI NEO	Spiraea japonica 'Neon Flash'	Neon Flash Spiraea	5 gal	
	VIB OPU	Viburnum opulus 'European Cranberrybush'	European Cranberrybush Viburnum	5 gal	

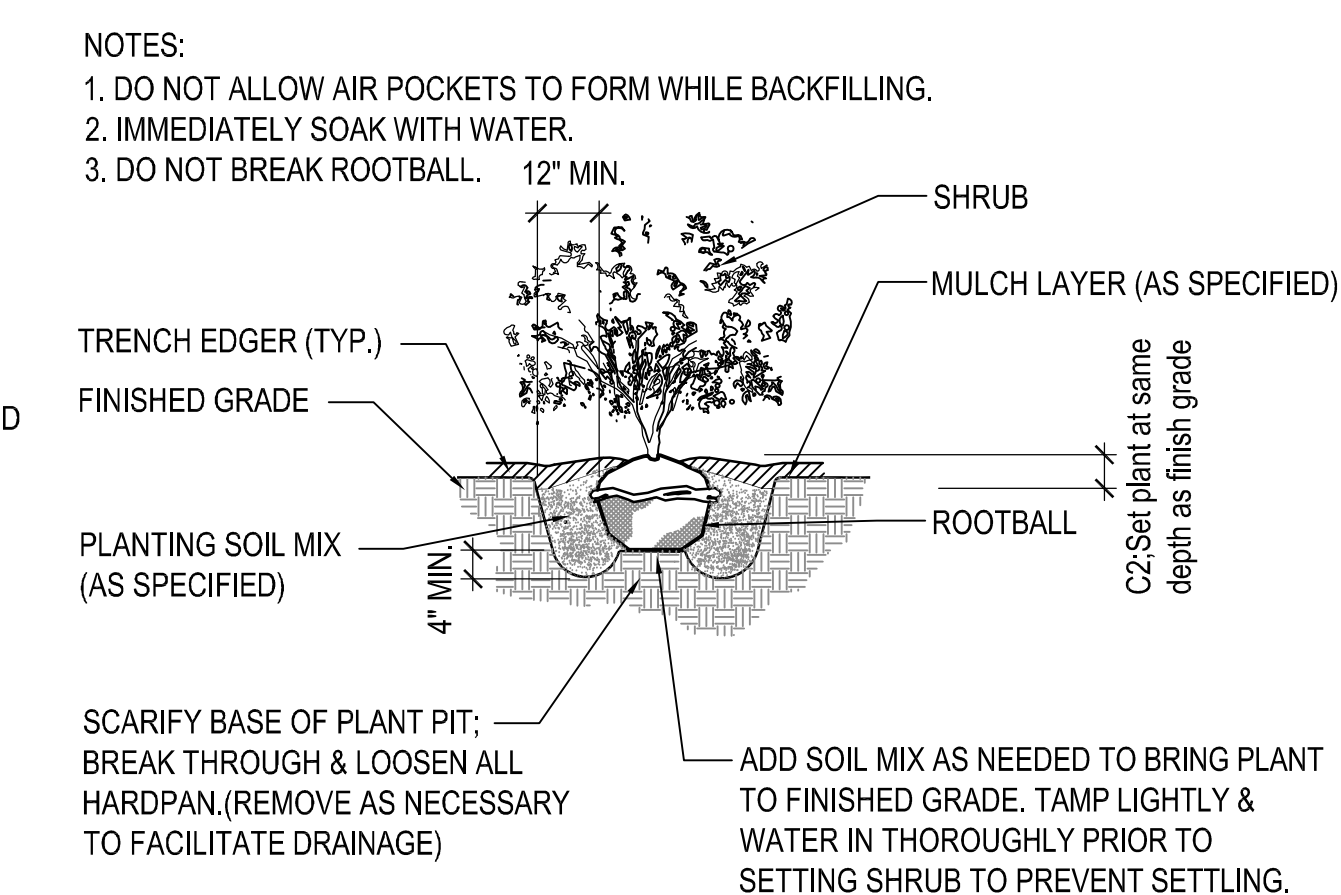
SHRUB AREAS	CODE	BOTANICAL NAME	COMMON NAME	CONT	SPACING	REMARKS
	HEM HEM	Hemerocallis hybrid Hemerocallis 'Stella de Oro'	Stella de Oro Day Lily	1 gal	15" o.c.	
	PEN FIR	Penstemon eatoni firecracker	Firecracker Penstemon	1 gal	24" o.c.	

TREE PLANTING NOTES:

1. TREES SHALL BEAR SAME RELATION TO FINISHED GRADE AS THEY DID TO PREVIOUSLY EXISTING GRADE.
2. DO NOT ALLOW AIR POCKETS TO FORM WHEN BACKFILLING.
3. LEAVE 10" OF STAKE ABOVE GRADE FOR EASY REMOVAL.
4. TREE SHOULD BE SECURED WITH GUY WIRES SPACED 120° APART. TREE SHALL STAND PLUMB. GUY WIRES TO BE REMOVED AT THE END OF GUARANTEE PERIOD.
5. STAKE TREES UNDER 2" CAL. GUY TREES 2" CAL. AND ABOVE.



A4 TREE PLANTING DETAIL
1" = 1'-0"



A5 SHRUB PLANTING DETAIL
1" = 1'-0"

PLANTING NOTES

ALL PLANTS SHALL CONFORM TO THE MINIMUM STANDARDS OF HEIGHT, SIZE, CALIPER AND ETC. OF THE AMERICAN ASSOCIATIONS OF NURSERYMEN "AMERICAN STANDARDS FOR NURSERY STOCK".
THIS CONTRACTOR SHALL SPREAD TOPSOIL TO A DEPTH OF 6" IN ALL LAWN PLANTING AREAS AND 12" IN ALL SHRUB AND PERENNIAL BEDS.

THIS CONTRACTOR SHALL BE RESPONSIBLE FOR DISPOSING FROM THE SITE ALL SOIL EXCAVATED FROM TREE PITS.

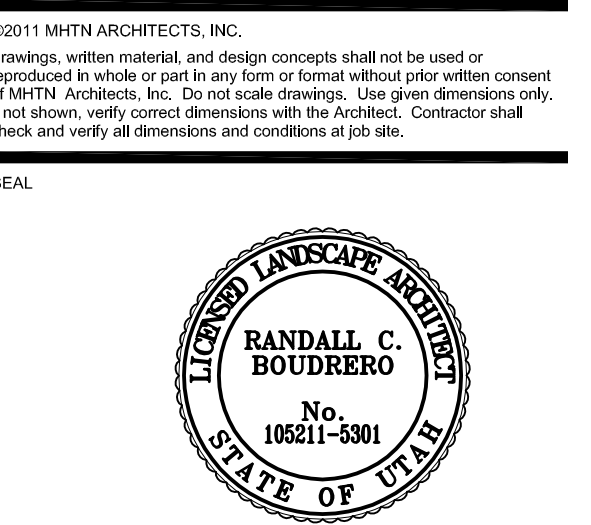
ALL MOWSTRIPS ARE TO BE INSTALLED PRIOR TO THE INSTALLATION OF THE IRRIGATION SYSTEM AND THE LANDSCAPE PLANTING.

INSTALL SHREDDED BARK MULCH IN ALL SHRUB PLANTING BEDS AFTER PLANT MATERIAL INSTALLATION.

THIS CONTRACTOR SHALL BE RESPONSIBLE FOR PROVIDING AND INSTALLING THE REQUIRED AMOUNT OF TOPSOIL TO COMPLETE THE PROJECT. NEW TOPSOIL SHALL MATCH QUALITY AND TEXTURE OF THE EXISTING TOPSOIL ON SITE.



WEST WEBER ELEMENTARY
 WEBER SCHOOL DISTRICT
 4000 SOUTH 2175 WESTROY, UT AND 84067



MHTN PROJECT NO. 2013554.00
DRAWN BY: V.O. CHECKED BY: P.B.
ISSUED:
NO. DATE DESCRIPTION
1 JUN 27 2014 CONSTRUCTION DOCUMENTS

CONTRACTOR TO VERIFY DRAWINGS IN FIELD USE REFLECT LAST REVISION DATE:
NO. DATE DESCRIPTION

SHEET NAME
A PLANTING DETAILS
CONSTRUCTION DOCUMENTS
SHEET NUMBER

LP5.01