

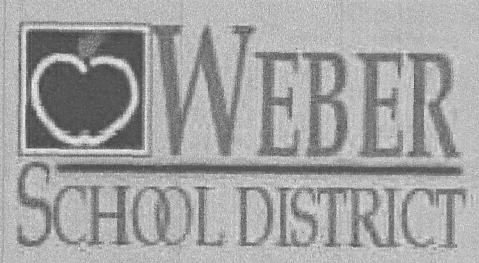
MHTN ARCHITECTS

MHTN Architects, Inc.
420 East South Temple
Suite 100
Salt Lake City, Utah 84111
Telephone (801) 595-8700
Telefax (801) 595-8717
www.mhtn.com

N|V|5

BEYOND ENGINEERING

5217 So. State Street
Suite 200
Murray, Utah 84107
801-743-1300

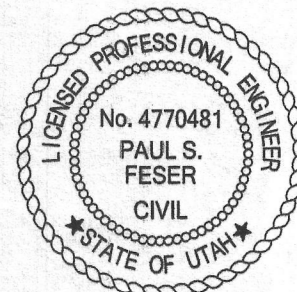


WEST WEBER ELEMENTARY

WEBER SCHOOL DISTRICT

4178 WEST 900 SOUTH OGDEN, UT AND 84404

80511 ARCHITECTS, INC.
Drawings, written material, and design concepts shall not be used or reproduced in whole or in part by any person or company without the written consent of MHTN Architects, Inc. Do not make drawings. Use plan dimensions only. If not shown, verify ground conditions with the architect. Contractor shall check and verify all dimensions and conditions at job site.



MHTN PROJECT NO. 2012545.00

DRAWN BY: BP CHECKED BY: PF

ISSUED:

NO.	DATE	DESCRIPTION
1	1/26/2014	CONSTRUCTION DOCUMENTS

CONTRACTOR TO VERIFY DRAWINGS IN FIELD USE REFLECT LAST REVISION DATE.

NO. DATE DESCRIPTION

NO.	DATE	DESCRIPTION
-----	------	-------------

SHEET NAME

ALTERNATE SITE PLAN

CONSTRUCTION DOCUMENTS

SHEET NUMBER

CE-608

GENERAL NOTES:
SEE SPECIFICATIONS PLANS FOR CONCRETE FINISH.
COORDINATE WITH LANDSCAPE PLANS FOR CONCRETE CONTROL JOINT LAYOUTS.
SEE ELECTRICAL PLANS FOR ADDITIONAL INFORMATION.
SEE LANDSCAPE PLANS FOR IRRIGATION, PLANTING AND ADDITIONAL INFORMATION.
REFER TO LATEST GEOTECHNICAL REPORT FOR EXISTING SOIL CONDITIONS AND PROPOSED PAVEMENTS.
ALL IMPROVEMENTS MUST COMPLY WITH ADA STANDARDS.
SEE GRADING PLANS FOR ADDITIONAL DESIGN INFORMATION.
SEE SIGNAGE AND STRIPING PLAN FOR ADDITIONAL INFORMATION.

SIGNAGE AND STRIPING GENERAL NOTES:
ALL DIMENSIONS ARE TO THE FACE OF CURB UNLESS OTHERWISE NOTED.
SEE ARCHITECTURAL PLANS FOR ADDITIONAL INFORMATION.
ALL SIGNS AND PAVEMENT MARKINGS SHALL CONFORM TO THE LATEST EDITION OF THE M.U.T.C.D. (MANUAL ON UNIFORM TRAFFIC CONTROL DEVICES).
ALL SIGNS ARE TO BE POST MOUNTED UNLESS OTHERWISE NOTED. SEE APWA SPECIFICATION 32.01.05 FOR POST INSTALLATION.

SCOPE OF WORK:
PROVIDE, INSTALL AND/OR CONSTRUCT THE FOLLOWING PER THE SPECIFICATIONS GIVEN OR REFERENCED, THE DETAILS NOTED, AND/OR AS SHOWN ON THE CONSTRUCTION DRAWINGS:

- CONTRACTOR TO PROTECT & PRESERVE EXISTING IMPROVEMENTS (TYPICAL UNLESS OTHERWISE NOTED).
- BUILDING FOOTPRINT.
- HEAVY ASPHALT PAVEMENT: 3.5" THICK ASPHALT WITH 10" AGGREGATE PER DETAIL (SEE DETAIL 1 ON SHEET CE-602)
- ASPHALT PAVEMENT: 3" THICK ASPHALT WITH 9" AGGREGATE BASE PER DETAIL (SEE DETAIL 2 ON SHEET CE-602)
- TYPE E CONCRETE CURB AND GUTTER PER APWA STD. DETAIL 205 AND CE-601 (SEE GRADING PLAN FOR CATCH OR SPILL TYPE CURB)
- SIDEWALK PER APWA STD. DETAIL 231 AND CE-601
- RIBBON CURB PER DETAIL (SEE DET. A4 OR A5 ON SHEET ASS.01)
- TYPE P CONCRETE CURB WALL PER APWA STD. DETAIL 209 AND CE-601
- 8" CONCRETE FILLED METAL BOLLARD (SEE DET. A1 ON SHEET ASS.01)
- TYPE I SIDEWALK RAMP WITH DETECTABLE WARNING SURFACE PER APWA STD. PLAN NO. 235 AND 238.
- DETECTABLE WARNING SURFACE PER APWA STD. PLAN NO. 238.
- OPEN DRIVE APPROACH PER APWA STD. DETAIL 225
- TREE GRATE (SEE DET. C3 ON SHEET ASS.02)
- FUTURE MARQUEE SIGN (BY OWNER)
- CONCRETE PAVEMENT: 5" THICK CONCRETE WITH 9" GRANULAR BASE PER DETAIL (SEE DETAIL 1 ON SHEET CE-602)
- PLAYGROUND (SEE DET. D2&D3 ON SHEET ASS.01)
- TRANSFORMER (SEE ELECTRICAL PLAN E1-11)
- BACKSTOP (SEE DET. A1 ON SHEET ASS.02)
- VINYL CHAIN LINK FENCE & MOW STRIP (SEE DET. B1, B2, AND B3 ON SHEET ASS.01)
- ADA DROP OFF ZONE
- 10' SIDEWALK PER APWA STD. DETAIL 231
- FLAG POLE (SEE DET. A2 ON SHEET ASS.01)
- LIGHT POLE (SEE ELECTRICAL PLAN)
- PLAYGROUND RAMP (SEE DET. D2 ON SHEET ASS.01)
- DUMPSTER ENCLOSURE (SEE DET. C3, B4, OR E4 ON SHEET ASS.01)
- SAW CUT AND PROVIDE A SMOOTH CLEAN EDGE
- 4" WIDE SOLID WHITE PAVEMENT MARKING.
- 12" WIDE SOLID WHITE STOP BAR MARKING.
- 12" WIDE SOLID WHITE CROSSWALK MARKINGS (8" WIDE).
- "STOP" SIGN PER 2009 M.U.T.C.D. STANDARD PLAN R1-1.
- SIDEWALK ENTRANCE (SEE DETAIL 10 ON SHEET CE-601)
- "HANDICAP PARKING" SIGN NO. R7-8 WITH "VAN ACCESSIBLE" SIGN R7-BP BELOW, PER 2009 M.U.T.C.D. SECTION 28.46, IN BALLARD
- ADA STALL PAINT MARKING.
- "NO PARKING - FIRE LANE" SIGN.
- "DO NOT ENTER" SIGN PER 2009 M.U.T.C.D. STD. PLAN R5-1
- "ONE WAY" SIGN PER 2009 M.U.T.C.D. STD. PLAN R6-2
- PAINT CURB FACE RED, FIRE LANE NO PARKING
- WHITE DIRECTION ARROW PER 2009 M.U.T.C.D.
- GATE (SEE DET E1 ON SHEET ASS.01)
- CONCRETE MOW STRIP (SEE DETAIL A5 ON SHEET ASS.01)
- KICKBALL STRIPING (SEE DET. B5 ON SHEET ASS.02)
- SEAT WALL (SEE DETAIL A3 ON SHEET ASS.01)
- BASKETBALL COURT STRIPING (SEE DET. B3&C4 ON SHEET AS 5.02)
- PLAYGROUND STRIPING (SEE DET. B4 ON SHEET ASS.02)
- HOPSCOTCH STRIPING (SEE DET. A4 ON SHEET ASS.02)
- FOUR SQUARE STRIPING (SEE DET. A5 ON SHEET ASS.02)
- BASKETBALL STANDARD (SEE DET. A3 ON SHEET ASS.01)
- CHAIN LINK FENCE AND MOW STRIP (SEE DET. B1, B2, AND B3 SHEET ASS.01)
- FIRE HYDRANT LOCATION
- ORNAMENTAL FENCE (SEE DET. D1 ASS.01)

SITE DATA:

SITE AREA: 350,958 SQ. FT (8.0 ACRES)

PARKING PROVIDED: 159 STALLS

ADA ACCESS (1 VAN, 5 STANDARD)

PROVIDED: 6 TOTAL (1 VAN, 5 STANDARD)

PROPOSED ASPHALT CONCRETE PAVEMENT (PARKING)

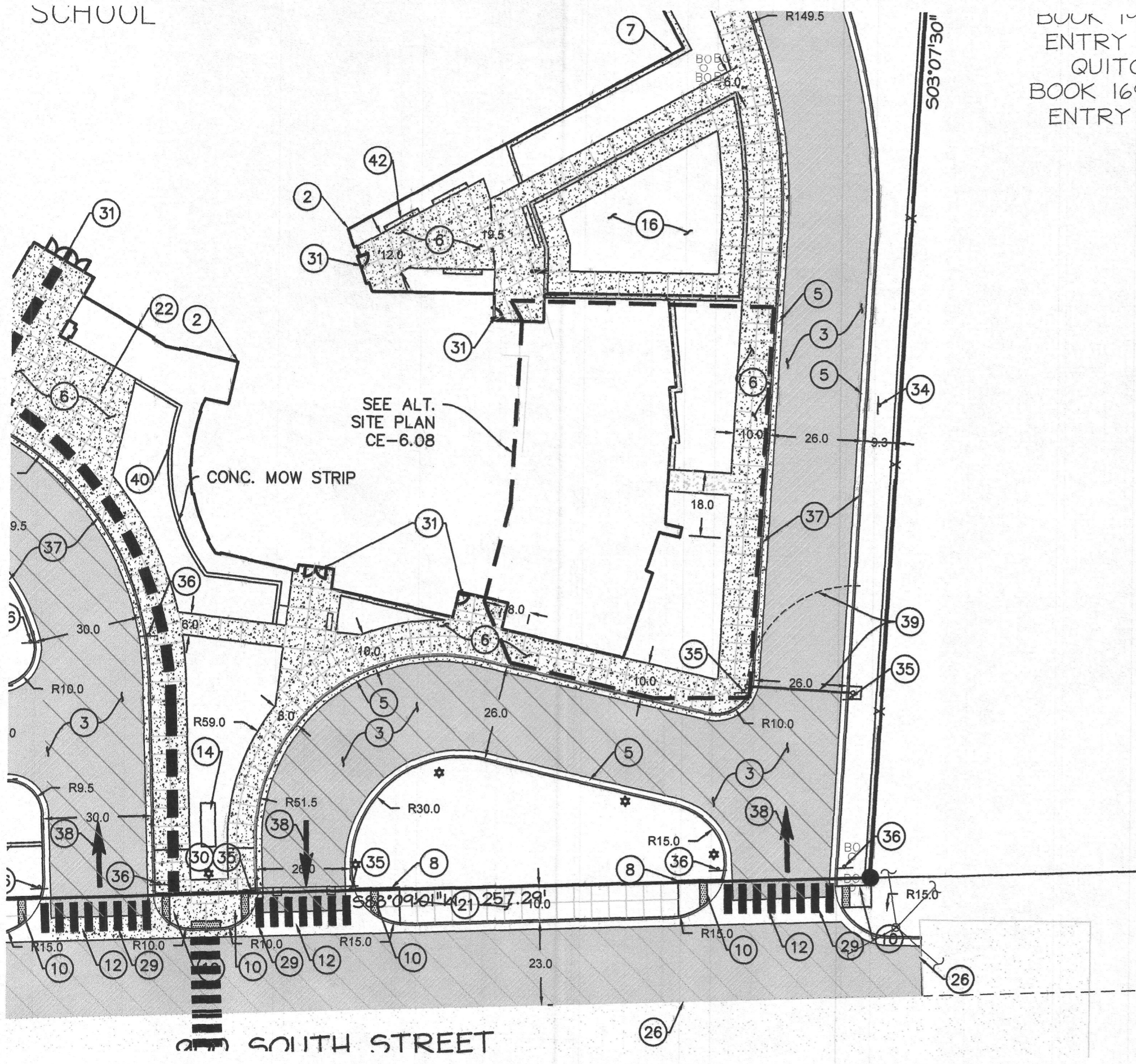
PROPOSED HEAVY DUTY ASPHALT CONCRETE PAVEMENT (DRIVE ZONE)

PROPOSED PEDESTRIAN CONCRETE PAVEMENT. JOINT PATTERN PER LANDSCAPE ARCHITECT



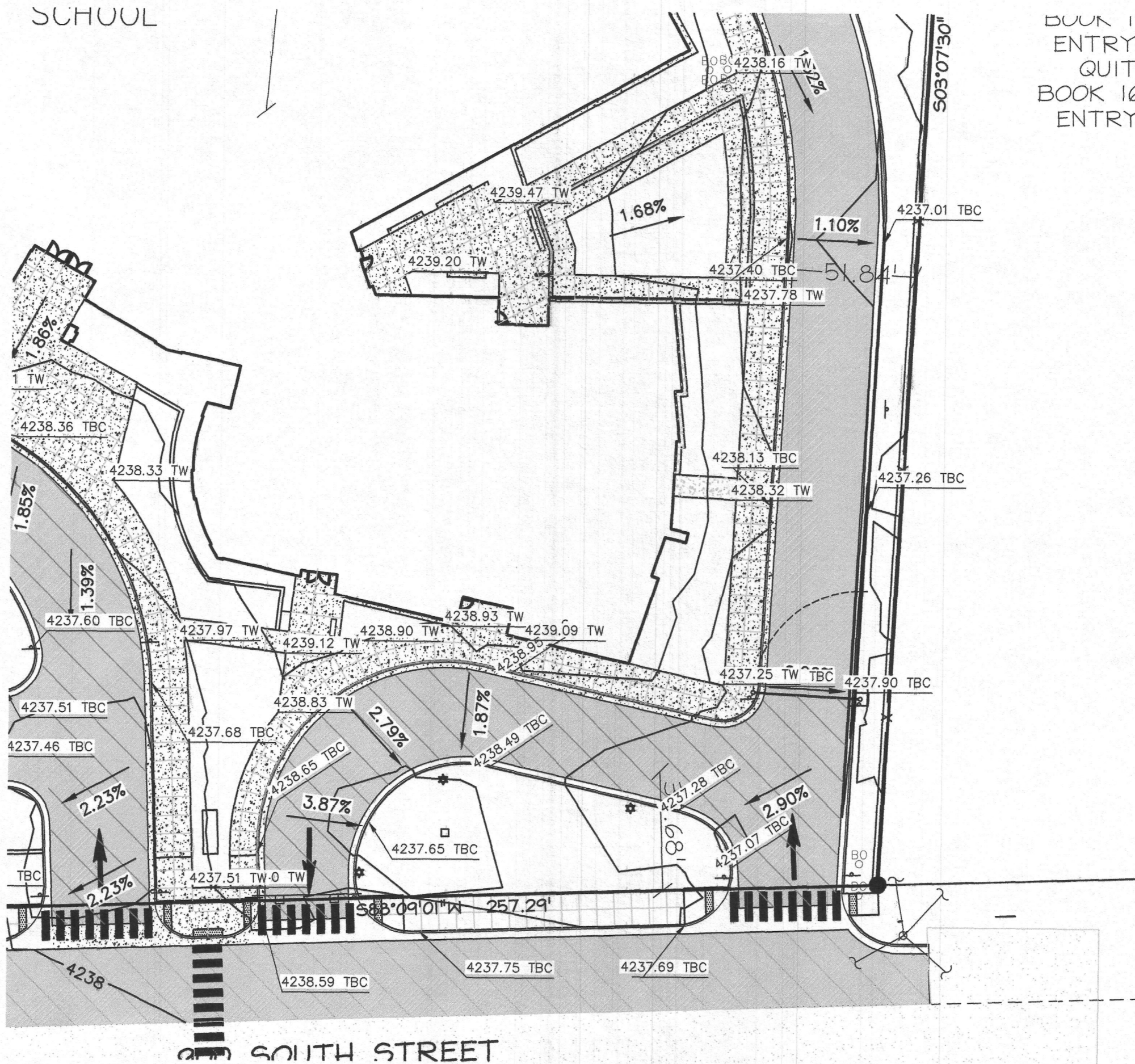
SCALE
HORIZONTAL: 1" = 30'

SCHOOL



BOOK 162
ENTRY
QUITCI
BOOK 169
ENTRY I

SCHOOL



BOOK 162
ENTRY
QUITCI
BOOK 169
ENTRY I

DATE: TBC DRAWING NAME: LAYOUT: PAUL S. FESER
SERIES: PLANS DESIGNER: PAUL S. FESER
JOB NO. 2012545.00