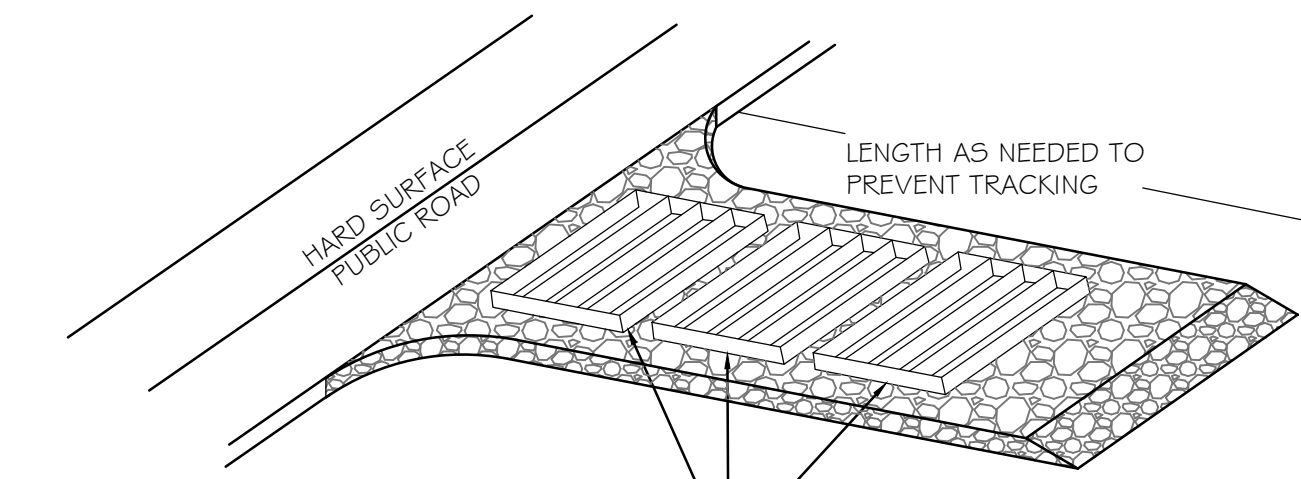


CARDON SUBDIVISION

SITE PLAN
WEBER COUNTY, UTAH
JANUARY 2013

NOTES:
THIS AREA HAS HISTORICALLY RECEIVED SHEET FLOW WATER FROM STORM WATER AND NEARBY CANAL. IT IS RECOMMENDED THAT ALL LIVING SPACE IS AT OR ABOVE GRADE.
AREA AROUND HOME SHOULD BE GRADED AT A MINIMUM OF 2% AWAY FROM BUILDING.
ALL WORK WITHIN U.D.O.T. RIGHT-OF-WAY SHALL REQUIRE AND BE COMPLETED UNDER A SEPARATE U.D.O.T PERMIT.
A CONTRACTOR PROVIDED STATE STORM WATER POLLUTION PREVENTION PLAN (SWPPP) IS REQUIRED.
EGRAVATED MATERIAL IS TO BE TEMPERATELY CONTAINED WITHIN THE BOUNDARIES OF LOT 1 OR PERMANENTLY REMOVED FROM THE SITE.
CONTRACTOR IS TO BE RESPONSIBLE IN IMPLEMENTING SWPPP PROCEDURES AND INSPECTIONS.
PORTABLE RESTROOM FACILITIES SHALL BE LOCATING WITHIN LOT 1.



A SERIES OF STEEL PLATES (3 OR MORE) WITH RUMBLE STRIPS OR MIN. 3" COARSE AGGREGATE.

ENTRANCE STABILIZATION NOTES:

- SEDIMENTS AND OTHER MATERIALS SHALL NOT BE TRACKED FROM THE SITE BY VEHICLE TRAFFIC. THE CONSTRUCTION ENTRANCE ROADWAYS SHALL BE STABILIZED SO AS TO PREVENT SEDIMENTS FROM BEING DEPOSITED INTO THE STORM DRAIN SYSTEMS. DEPOSITIONS MUST BE SWEEPED UP IMMEDIATELY AND MAY NOT BE WASHED DOWN BY RAIN OR OTHER MEANS INTO THE STORM DRAIN SYSTEM.
- STABILIZED CONSTRUCTION ENTRANCE SHALL BE:
 - LOCATED AT ANY POINT WHERE TRAFFIC WILL BE ENTERING OR LEAVING A CONSTRUCTION SITE TO OR FROM A PUBLIC RIGHT-OF-WAY, STREET, ALLEY AND SIDEWALK OR PARKING AREA.
 - A SERIES OF STEEL PLATES WITH "RUMBLE STRIPS", AND/OR MIN. 3" COARSE AGGREGATE WITH LENGTH, WIDTH AND THICKNESS AS NEEDED TO ADEQUATELY PREVENT ANY TRACKING ONTO PAVED SURFACES.
- ADDING A WASH RACK WITH A SEDIMENT TRAP LARGE ENOUGH TO COLLECT ALL WASH WATER CAN GREATLY IMPROVE EFFICIENCY.
- ALL VEHICLES ACCESSING THE CONSTRUCTION SITE SHALL UTILIZE THE STABILIZED CONSTRUCTION ENTRANCE SITES.

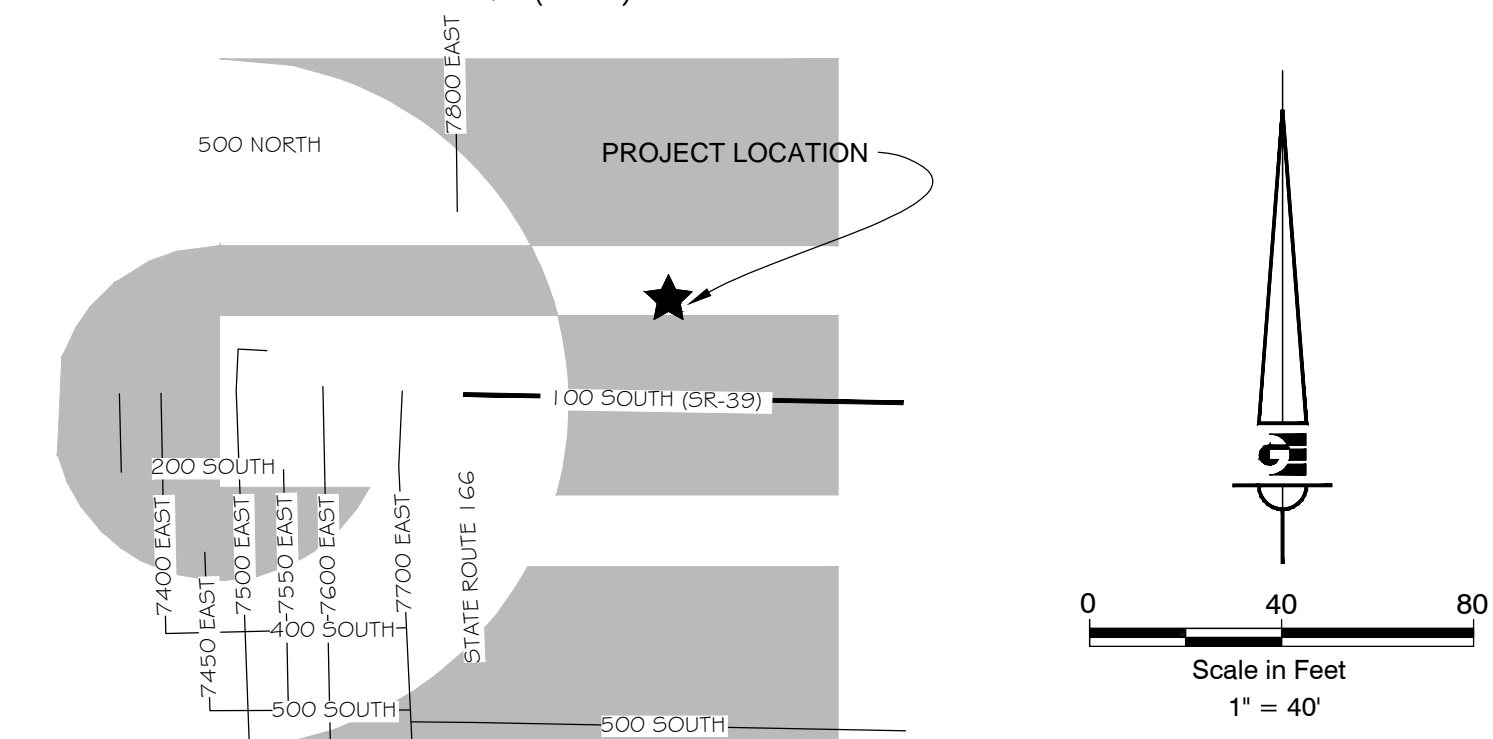
STREET MAINTENANCE NOTES:

- REMOVE ALL SEDIMENT DEPOSITED ON PAVED ROADWAYS IMMEDIATELY.
- SWEEP PAVED AREAS THAT RECEIVE CONSTRUCTION TRAFFIC WHENEVER SEDIMENT BECOMES VISIBLE.
- PAVEMENT WASHING WITH WATER IS PROHIBITED IF IT RESULTS IN A DISCHARGE TO THE STORM DRAIN SYSTEM.

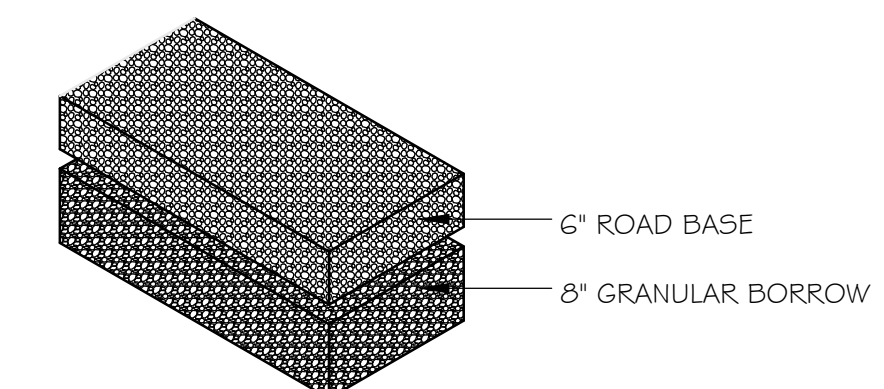
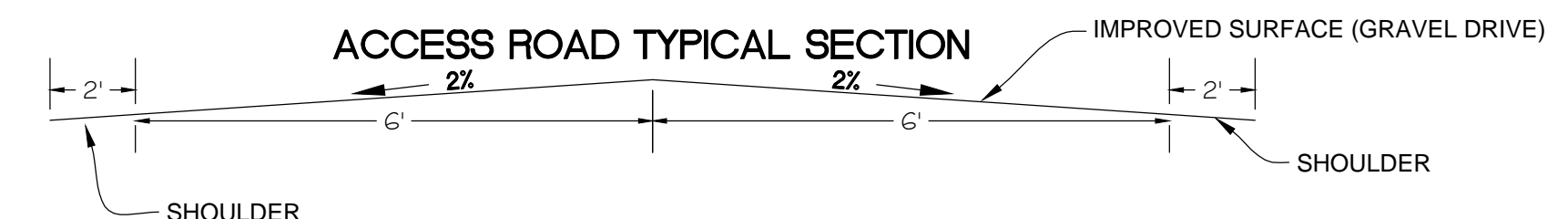
NOTE:

CONTRACTOR SHALL COMPLETE AND SUBMIT A STATE NOTICE OF INTENT (NOI) AND A STORM WATER POLLUTION PREVENTION PLAN BOOKLET

VICINITY MAP (NTS)

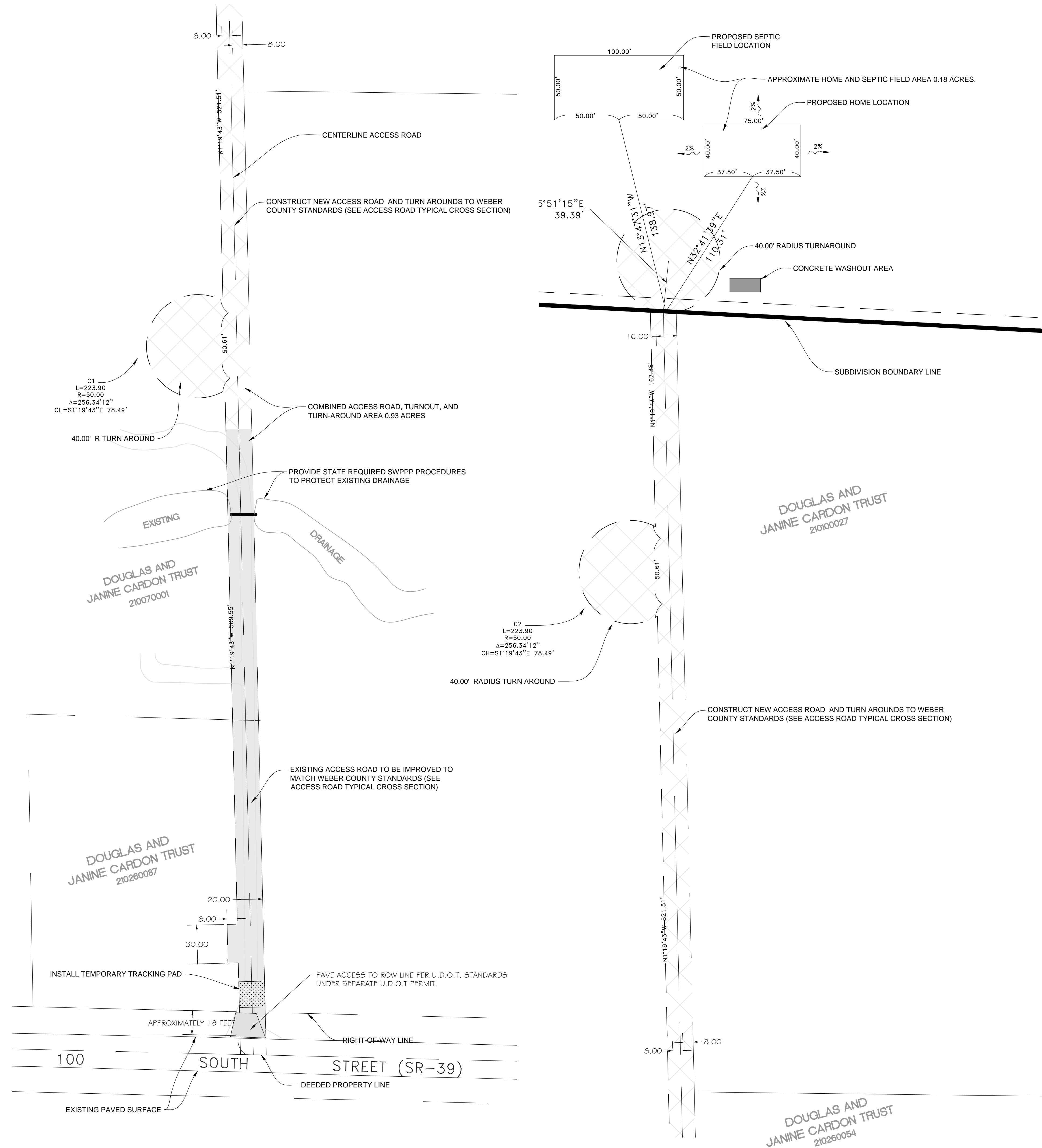


ACCESS ROAD TYPICAL SECTION



TYPICAL GRAVEL ROAD SECTION

DEVELOPER:
DOUGLAS J. & JANINE G.
CARDON TRUST
7940 EAST 100 SOUTH
HUNTSVILLE, UTAH
84310



SCALE: 1" = 40'
DATE: 11/11/13
DESIGN: KHW
DRAWN: KHW
CHECKED: ###
DWG: R:\0312 - CARDON, MATTY\LOT SUB\SURVEY\DWG\CARDON SUB.DWG

REVISIONS	DESCRIPTION

SITE PLAN
CARDON SUBDIVISION
NOVEMBER 2013
WEBER COUNTY, UTAH

5875 S. Adams Ave
Parkway, Suite 200
Ogden, Utah 84405
(801) 476-0202

Gardner Engineering

EX #