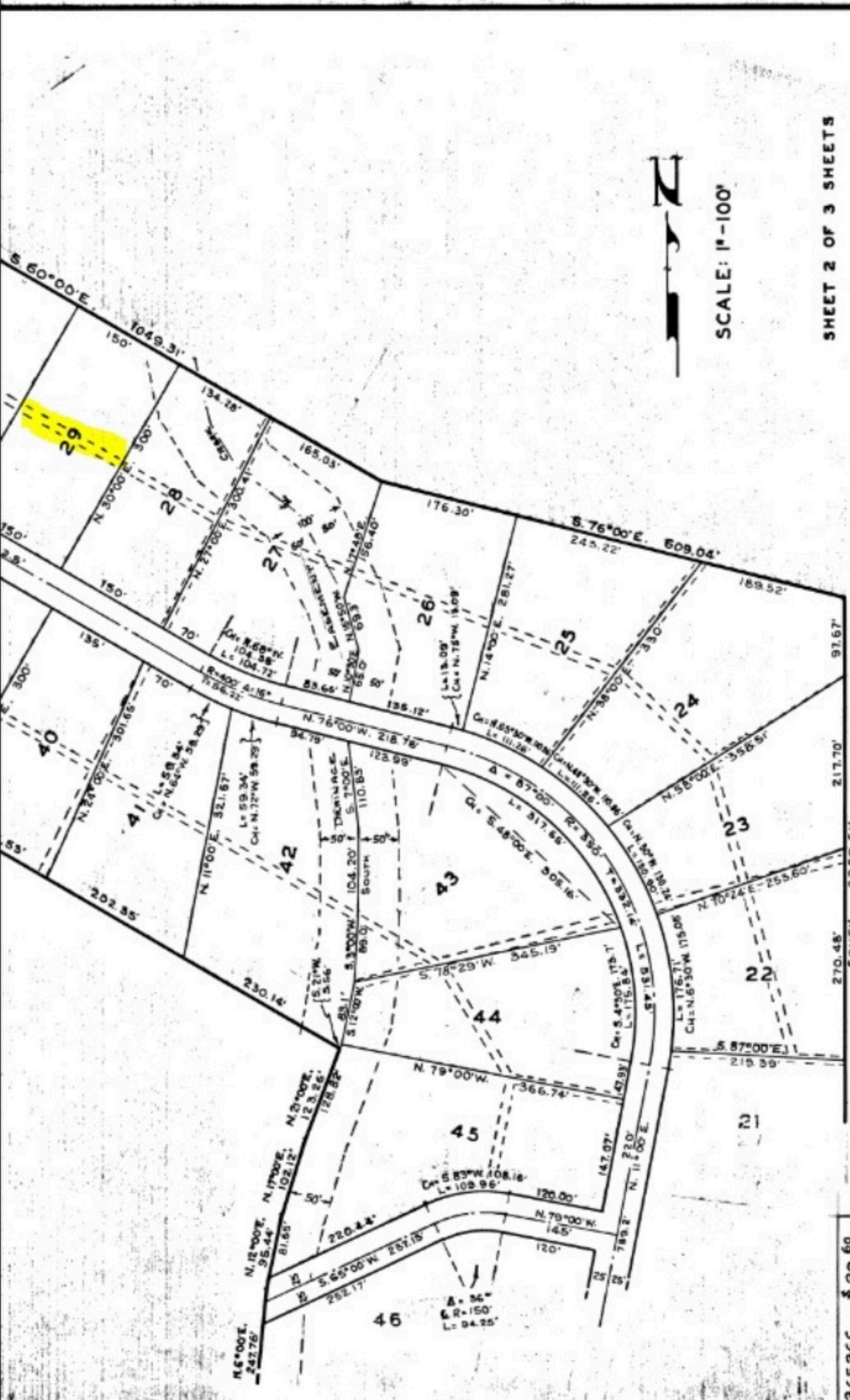


SILVER BELL ESTATES
 IN WEBER COUNTY, UTAH
 PART OF SEC. 32, T.7N., R.1E., S.L.B. & M., U.S.S.



SCALE: 1"=100'

SHEET 2 OF 3 SHEETS

SILVER BELL ESTATES NO. 1 IN WEBER COUNTY	
JOB	ENGINEERING CONSULTATION, INC. 767-22 ND ST. OGDEN UTAH
DWG.	

365366 \$ 29.60
 STATE OF UTAH
 COUNTY OF WEBER
 FILED AND RECORDED FOR
 S. L. B. & M. SURVEY
 SEP 28 4 17 PM '61
 IN BOOK 17 OF PLATS
 PAGE 89-90
 RUTH EMMES OLSEN
 COUNTY RECORDER
 BY: *Edith D. ...*

