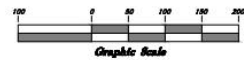


# Ferguson Legacy Subdivision

A part of the West Half of Section 14, T6N, R1E, SLB&M, U.S. Survey  
Weber County, Utah  
May 2020



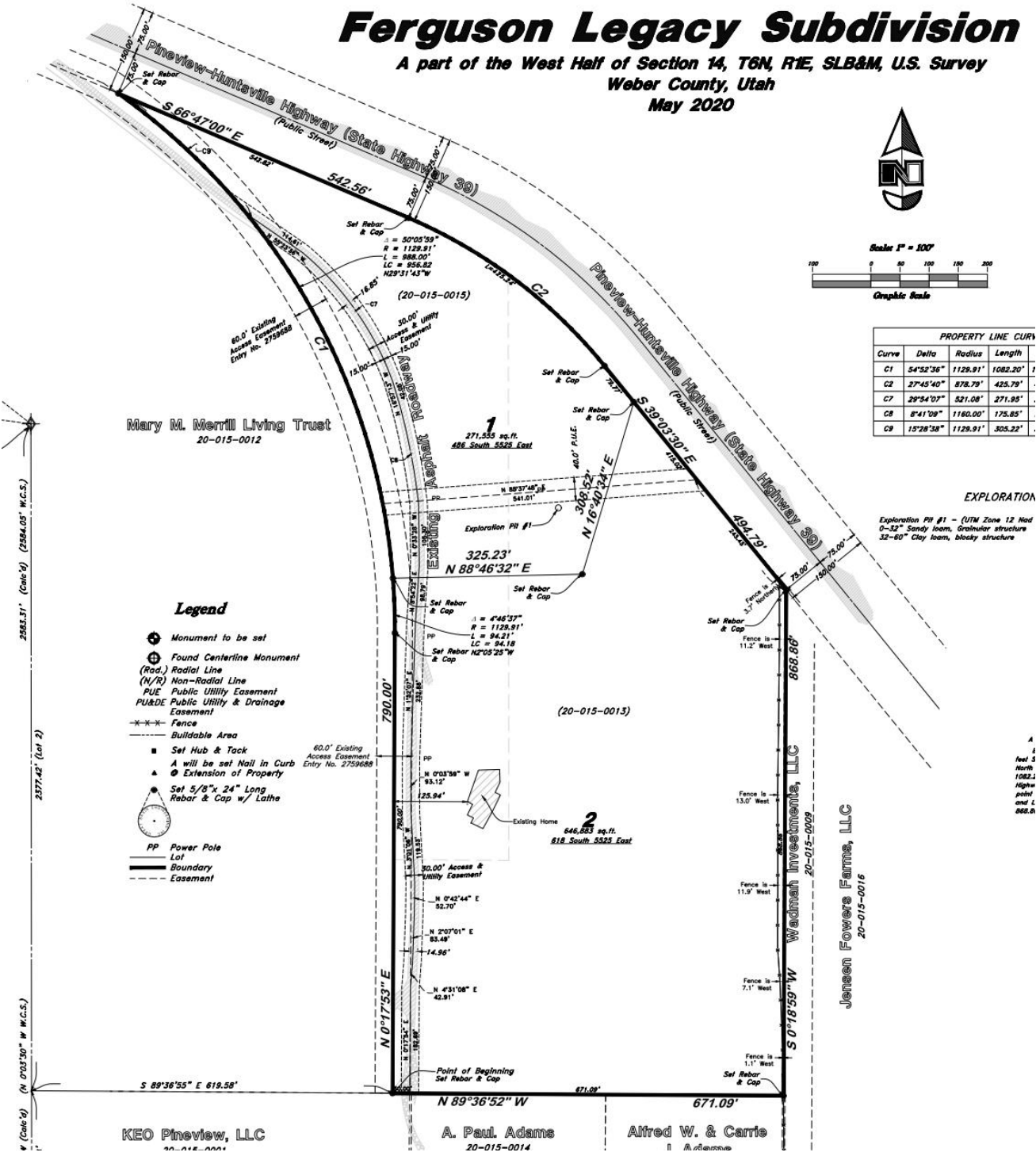
Scale 1" = 100'



PROPERTY LINE CURV			
Curve	Delta	Radius	Length
C1	54°52'56"	1129.91'	1082.20'
C2	27°45'40"	878.79'	425.79'
C7	29°54'07"	521.08'	271.95'
C8	8°41'09"	1160.00'	175.85'
C9	15°28'38"	1129.91'	305.22'

**EXPLORATION**

Exploration Pit #1 - (UTM Zone 12 Nord  
0-32" Sandy loam, granular structure  
32-60" Clay loam, blocky structure



**Legend**

- ⊕ Monument to be set
- ⊕ Found Centerline Monument
- (Rad.) Radial Line
- (N/R) Non-Radial Line
- PUE Public Utility Easement
- PU&DE Public Utility & Drainage Easement
- Fence
- Buildable Area
- Set Hub & Tack
- ▲ A will be set Nail in Curb
- Extension of Property
- Set 5/8"x 24" Long Rebar & Cap w/ Lath
- PP Power Pole
- Lot
- Boundary
- Easement