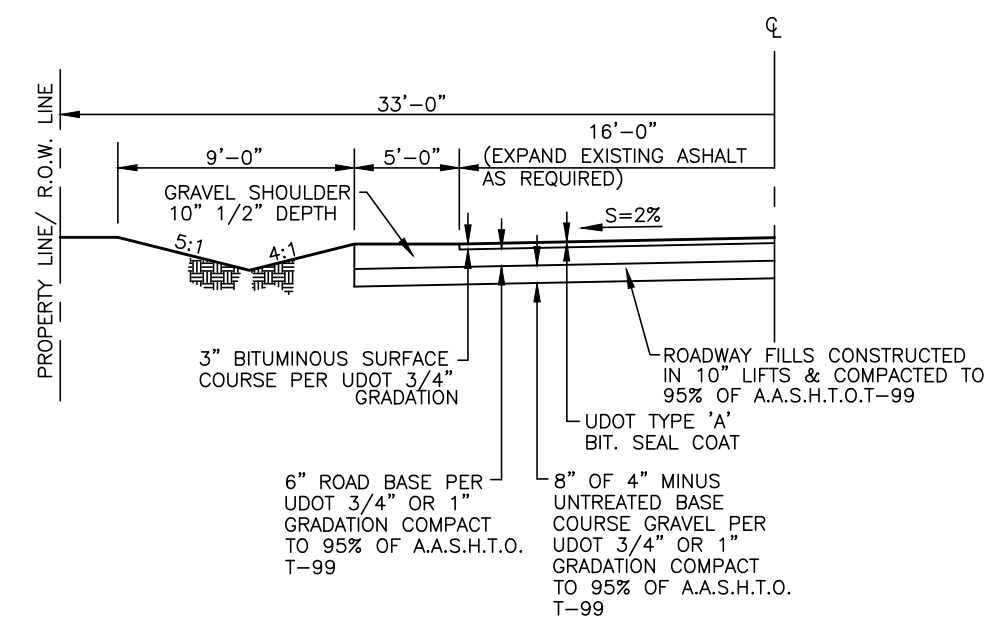
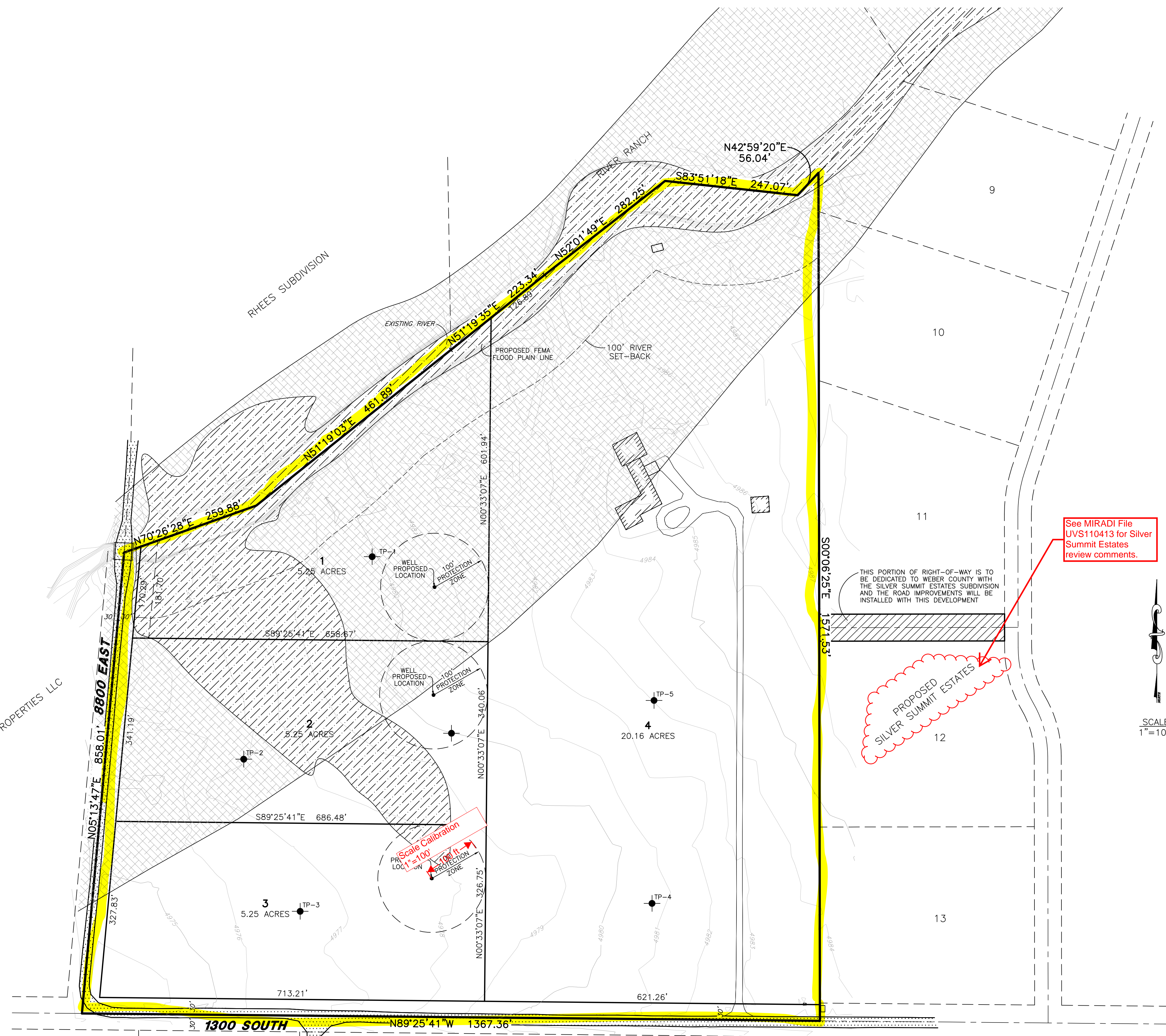


Vicinity Map



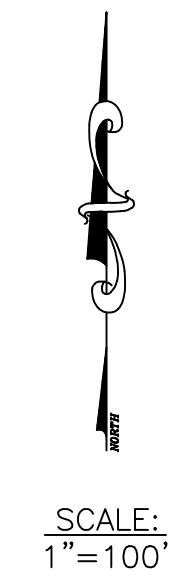
1300 South & 8800 East Street Section
SCALE: NONE

Legend

- = TEST PIT LOCATION
- = EXISTING FEMA FLOOD PLAIN
- = PROPOSED FEMA FLOOD PLAIN
- = EXISTING ASPHALT SURFACE
- = PROPOSED ASPHALT SURFACE

- NOTES:
1. CONTOURS ARE SHOWN WITH A ONE FOOT INTERVAL.
 2. DUE TO THE FACT THAT THERE IS NO STORM DRAINAGE SYSTEM IN THIS AREA WE ARE PROPOSING THAT CHECK DAMS BE DESIGNED INTO THE ROADSIDE DITCHES.

See MIRADI File UVS110413 for Silver Summit Estates review comments.



WANGGUARD TODD
A. JENSEN & WF
CARMELLE

FARMS DAVID G
PILKINGTON & WF
JOHN M.

MONASTERY OF OUR
LADY OF THE HOLY
TRINITY OF THE
ORDER OF
CISTERCIANS OF
STRICT OBSERVANCE

**APPROVED
WEBER FIRE DISTRICT
12/17/2013 2:04:04 PM**

Developer:
Patrick Heeg
330 Madison Avenue
New York, New York 10166
(917) 509-7626

Powder Ranch Subdivision

Weber County, Utah

Reeve & Associates, Inc.
4155 S. HARRISON BLVD., SUITE 110, OGDEN, UTAH 84403
TEL: (801) 621-1100 FAX: (801) 621-2668 WWW.REEVE-ASSOC.COM
LAND PLANNERS • CIVIL ENGINEERS • LAND SURVEYORS
TRAFFIC ENGINEERS • STRUCTURAL ENGINEERS • LANDSCAPE ARCHITECTS

REVISIONS	DESCRIPTION
DATE	

Powder Ranch Subdivision
PART OF THE NW 1/4 OF SECTION 21, T.6N., R.1E., S.11B & M., U.S. SURVEY
WEBER COUNTY, UTAH

Preliminary Design

--	--

Project Info.

Engineer:	N. Reeve
Designer:	C. Cave
Begin Date:	OCTOBER 15, 2013
Name:	POWER RANCH SUBDIVISION
Number:	6266-01

Sheet	1
1	Sheets