



Weber County Planning Division

Legacy Mountain Estates LLC
6068 E Nighthawk Lane
Huntsville, UT 84317

RE: Legacy Mountain Estates PRUD Conditional Use Permit Revisions

Based on LUC 108-4-3(b)(2)g, the Weber County Planning Division has approved a de minimis change to the conditional use permit (CUP 2021-04) known as Legacy Mountain Estates PRUD. The changes include the land use approval of two subdivision signs, in the proposed locations shown in the exhibits to this letter.



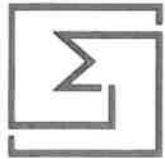
Weber County Planning Director

3/15/23

Date

Exhibits

Exhibit A: Proposed subdivision signs and location



LEGACY MOUNTAIN
ESTATES



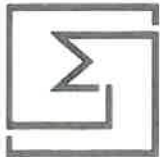
Exhibit A

ENTRANCE SIGNAGE - REVISED, SEPTEMBER 2022
MARK HOFELING, MIKE ROCK



Exhibit A

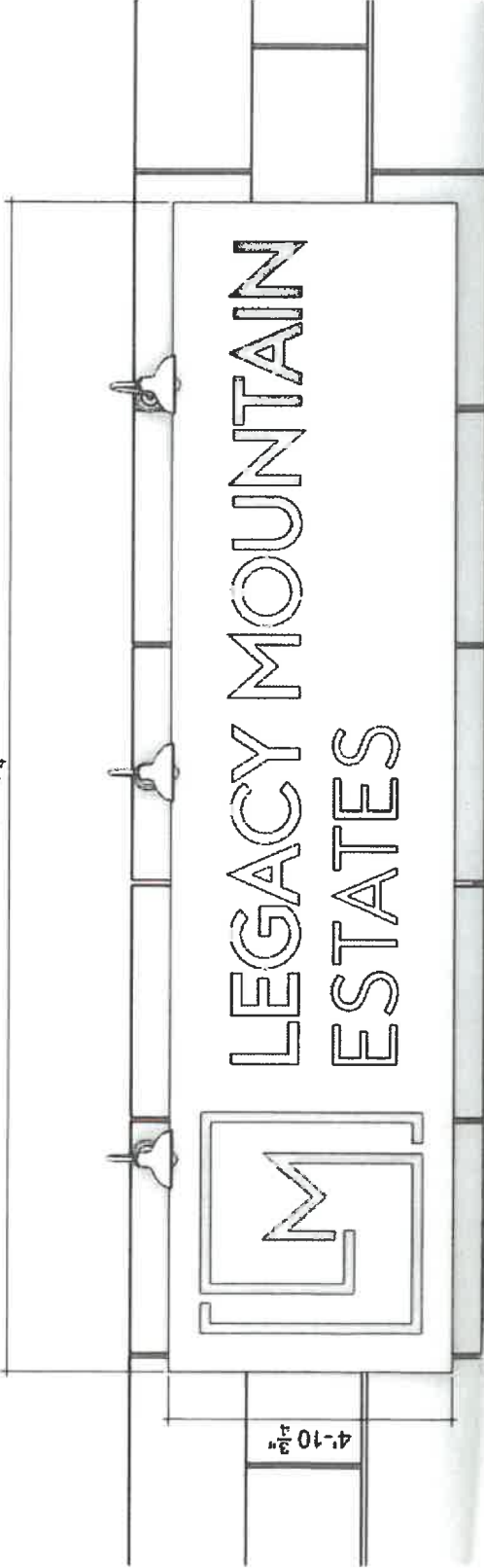
ENTRANCE SIGNAGE - REVISED, SEPTEMBER 2022
MARK HOFELING, MIKE ROCK



LEGACY MOUNTAIN
ESTATES

Surface area (total): 87ft²
Surface area (letters): 12ft²

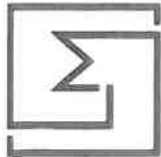
20'-2 ¹/₄"



4'-10 ³/₄"

Exhibit A

ENTRANCE SIGNAGE - REVISED, SEPTEMBER 2022
MARK HOFELING, MIKE ROCK



LEGACY MOUNTAIN
ESTATES

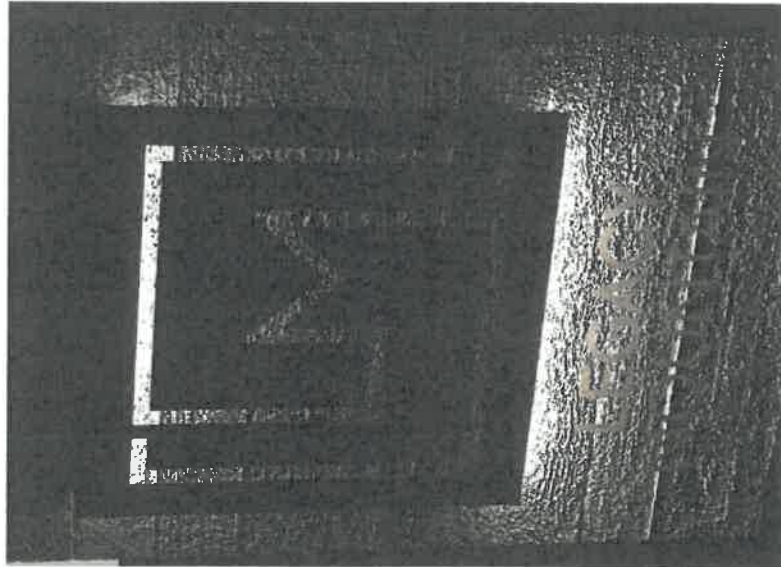
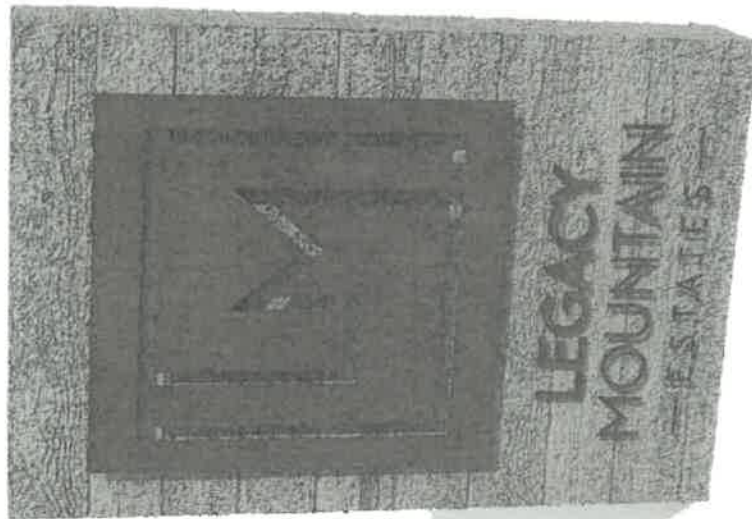
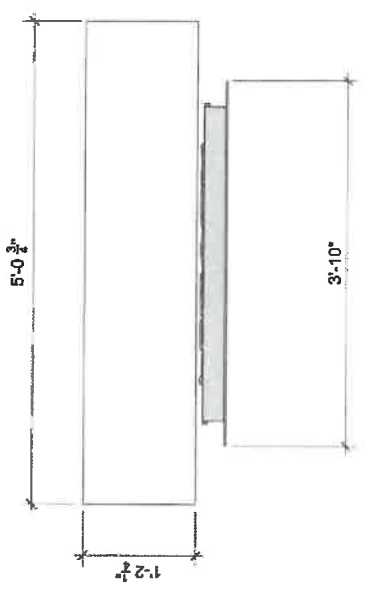
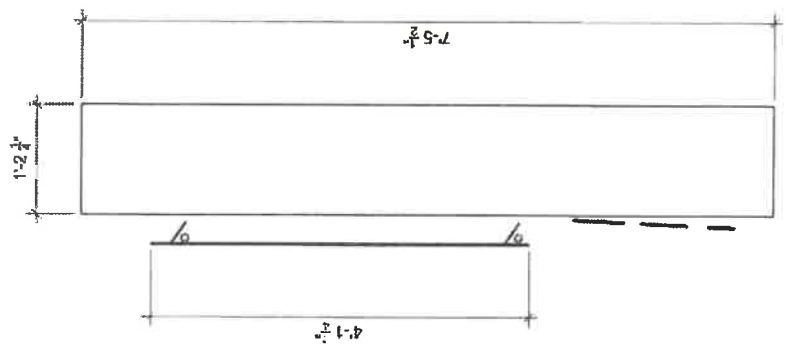
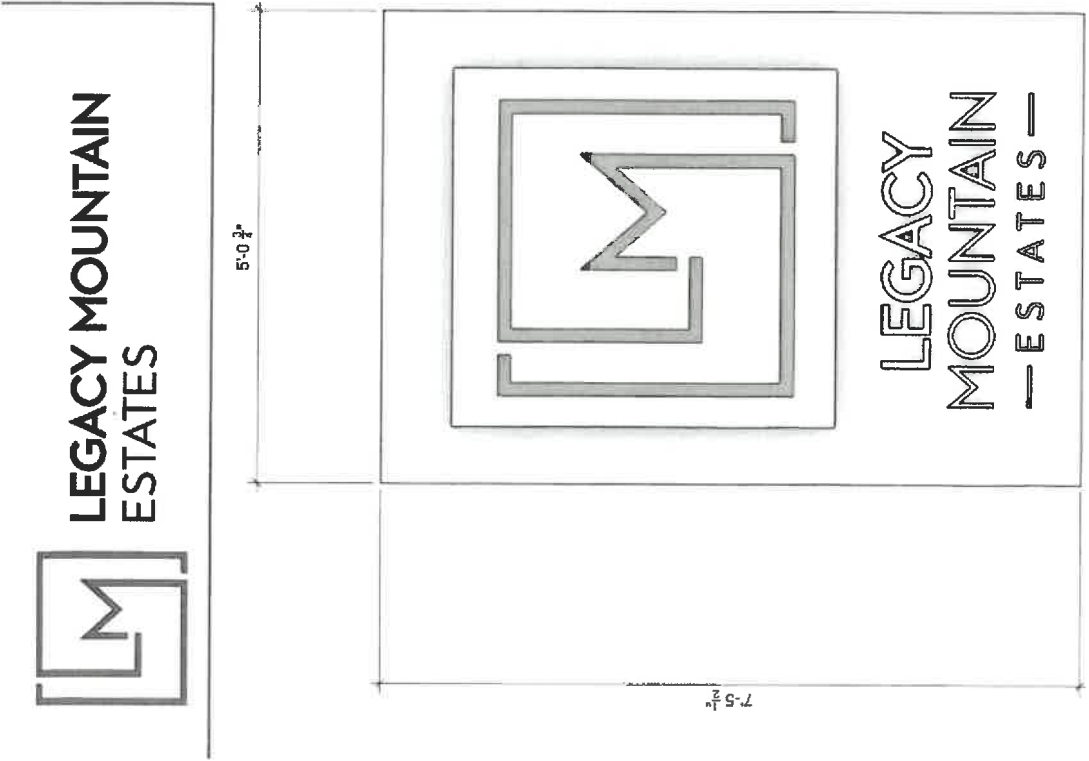


Exhibit A

ENTRANCE SIGNAGE - REVISED, SEPTEMBER 2022
MARK HOFELING, MIKE ROCK



LEGACY MOUNTAIN
ESTATES

LEGACY
MOUNTAIN
— ESTATES —