

Total units = 27

Garage parking = 29

Parking lot spaces = 22

Units with driveways = 8 +

Total parking spaces
(off-street) =

59 +

DW = Driveway

PART OF THE SW. 1/4, OF SECTION 22, T.7N., R.1E., S.L.B. & M.
VILLAGE AT WOLF CREEK 1ST AMENDMENT

370

TAXING UNIT: 203

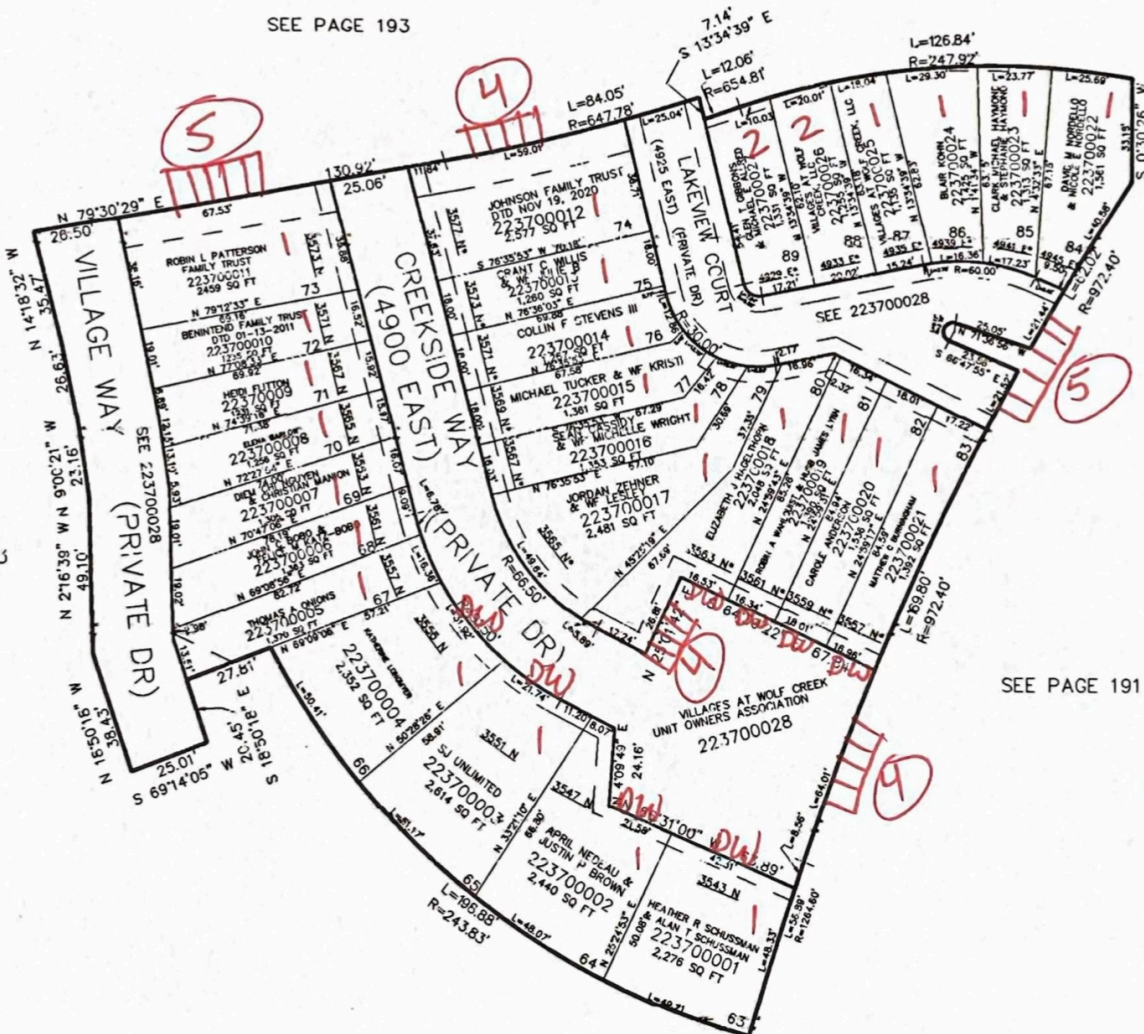
IN WEBER COUNTY

SCALE 1" = 30'

SEE PAGE 193

SEE PAGE 193

SEE PAGE 191



*ADDRESS AFFDAWT E#3090365

5' & 10' UTILITY & DRAINAGE EASEMENTS EACH
SIDE OF PROPERTY LINES AS INDICATED
BY DASHED LINES EXCEPT AS OTHERWISE
SHOWN.

FOR COMPLETE ENG DATA SEE
ORIGINAL DELINEATION PLAT IN
BOOK 85, PAGE 92 OF RECORDS.

FOR TAX PURPOSES ONLY