



SKY LODGE HOTEL DESIGN REVIEW APPLICATION

POWDER MOUNTAIN, UTAH



TREES LEGEND

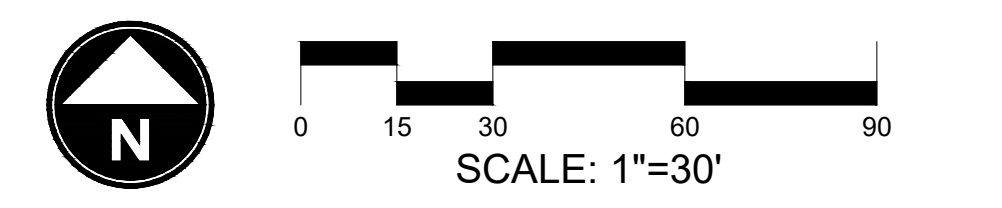
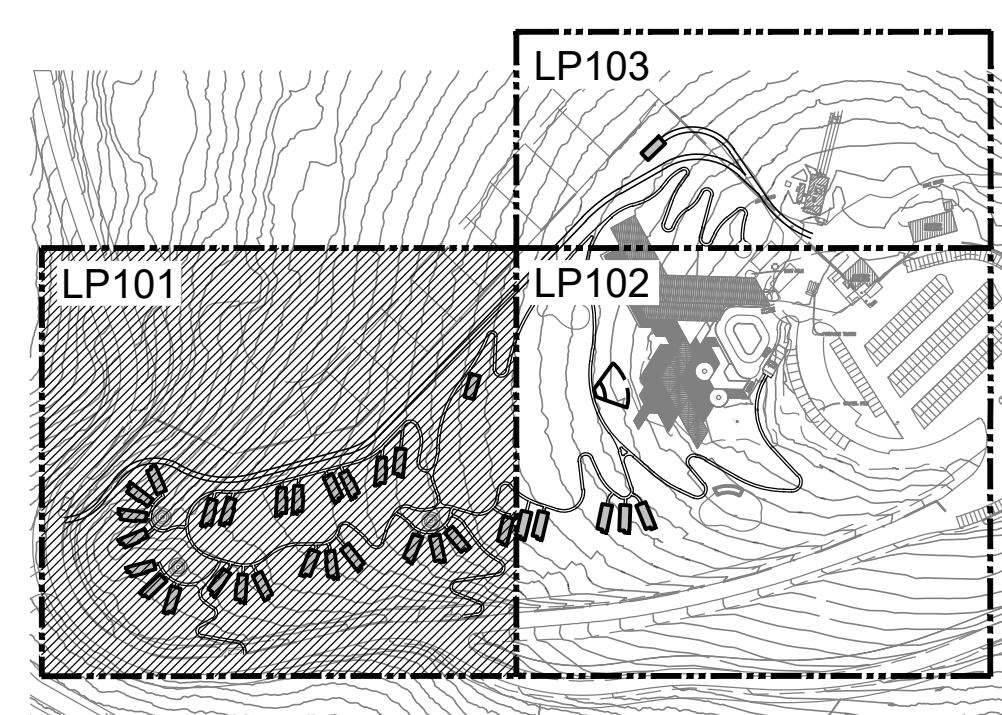
CONIFER TREES	BOTANICAL NAME	COMMON NAME	QTY	REMARKS
	<i>Picea pungens</i>	Colorado Spruce	22	Balled and burlapped nursery stock
	<i>Pinus ponderosa</i>	Ponderosa Pine	14	Balled and burlapped nursery stock

DECIDUOUS TREES	BOTANICAL NAME	COMMON NAME	QTY	REMARKS
	<i>Populus tremuloides</i>	Quaking Aspen	202	Clump Form, #10 gal. container

GROUND PLANE LEGEND

	REVEGETATION AREAS Non-irrigated landscape revegetation areas shall include a hydroseed mix of native grasses and shrubs suitable for the existing growing conditions, elevations, and solar exposures. Apply hydroseed during the fall or spring seasons to maximize seed germination and root establishment during periods of cooler temperatures and naturally occurring precipitation.	224,571 sf
	TURFGRASS Non-irrigated, water-wise blend of warm season fescue and rye turfgrass on sloped hillside amphitheater space and within dog park space. Apply hydroseed during the fall or spring seasons to maximize seed germination and root establishment during periods of cooler temperatures and naturally occurring precipitation.	6,600 sf
	PLAYGROUND SURFACE Natural wood fiber playground surface, engineered to provide fall protection within playground space. Install to a minimum depth of fifteen inches (15") or as required for selected playground equipment and elements.	3,658 sf

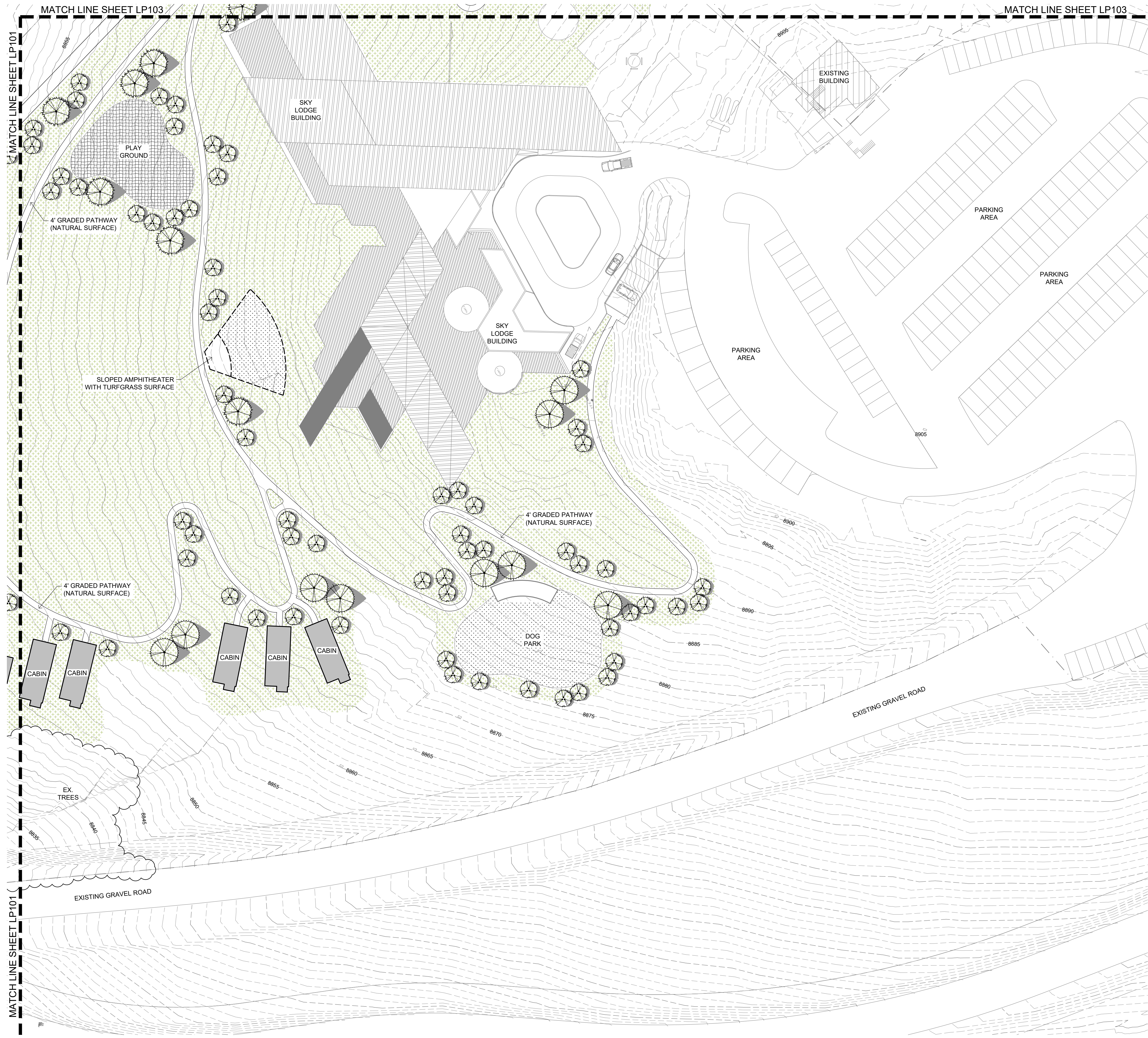
SHEET KEY:



DATE:	FEBRUARY 2023
PROJECT:	000.0000.195
DRAWN BY:	AKC
REVIEW BY:	EL
VERSION:	DESIGN REVIEW APP.
REVISIONS:	

SHEET TITLE:
LANDSCAPE & PLANTING PLAN

SHEET NUMBER:
LP101



TREES LEGEND

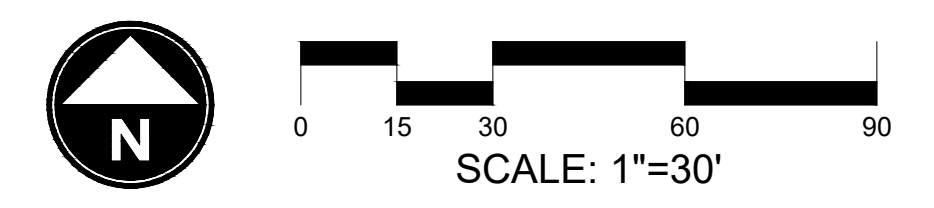
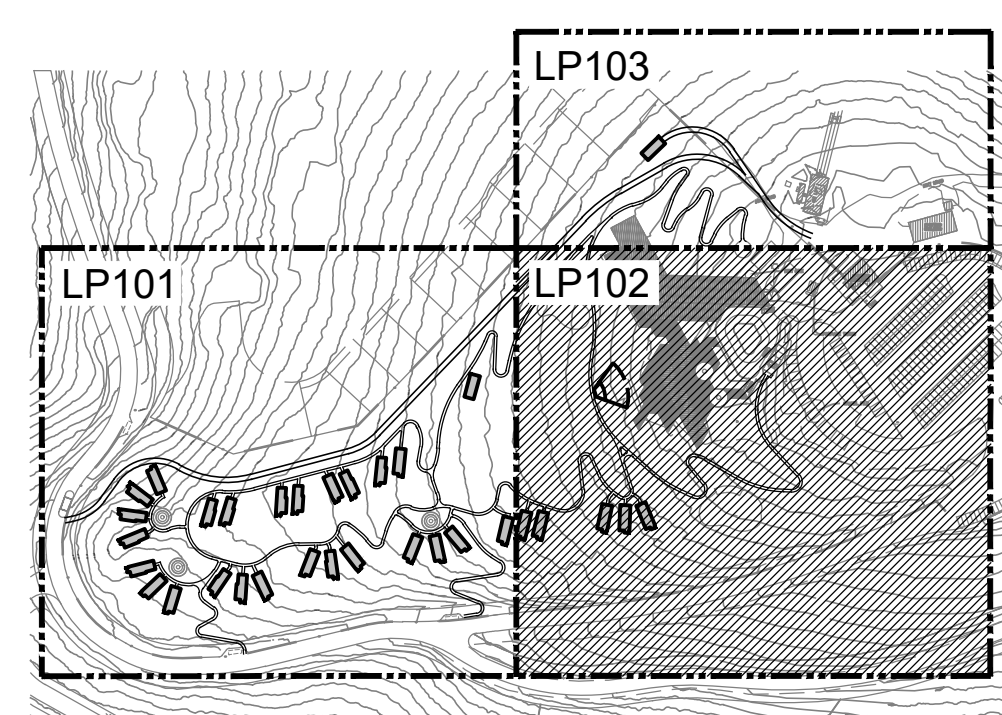
CONIFER TREES	BOTANICAL NAME	COMMON NAME	QTY	REMARKS
	<i>Picea pungens</i>	Colorado Spruce	22	Balled and burlapped nursery stock
	<i>Pinus ponderosa</i>	Ponderosa Pine	14	Balled and burlapped nursery stock

DECIDUOUS TREES	BOTANICAL NAME	COMMON NAME	QTY	REMARKS
	<i>Populus tremuloides</i>	Quaking Aspen	202	Clump Form, #10 gal. container

GROUND PLANE LEGEND

	REVEGETATION AREAS Non-irrigated landscape revegetation areas shall include a hydroseed mix of native grasses and shrubs suitable for the existing growing conditions: elevations, and solar exposures. Apply hydroseed during the fall or spring seasons to maximize seed germination and root establishment during periods of cooler temperatures and naturally occurring precipitation.	224,571 sf
	TURFGRASS Non-irrigated, water-wise blend of warm season fescue and rye turfgrass on sloped hillside amphitheater space and within dog park space. Apply hydroseed during the fall or spring seasons to maximize seed germination and root establishment during periods of cooler temperatures and naturally occurring precipitation.	6,600 sf
	PLAYGROUND SURFACE Natural wood fiber playground surface, engineered to provide fall protection within playground space. Install to a minimum depth of fifteen inches (15") or as required for selected playground equipment and elements.	3,658 sf

SHEET KEY:



SKY LODGE HOTEL
DESIGN REVIEW APPLICATION

POWDER MOUNTAIN, UTAH

DATE:	FEBRUARY 2023
PROJECT:	000.0000.195
DRAWN BY:	AKC
REVIEW BY:	EL
VERSION:	DESIGN REVIEW APP.
REVISIONS:	

SHEET TITLE:
LANDSCAPE & PLANTING PLAN

SHEET NUMBER:
LP102



TREES LEGEND

CONIFER TREES	BOTANICAL NAME	COMMON NAME	QTY	REMARKS
	Picea pungens	Colorado Spruce	22	Balled and burlapped nursery stock
	Pinus ponderosa	Ponderosa Pine	14	Balled and burlapped nursery stock

DECIDUOUS TREES	BOTANICAL NAME	COMMON NAME	QTY	REMARKS
	Populus tremuloides	Quaking Aspen	202	Clump Form, #10 gal. container

GROUND PLANE LEGEND

	REVEGETATION AREAS Non-irrigated landscape revegetation areas shall include a hydroseed mix of native grasses and shrubs suitable for the existing growing conditions: elevations, and solar exposures. Apply hydroseed during the fall or spring seasons to maximize seed germination and root establishment during periods of cooler temperatures and naturally occurring precipitation.	224,571 sf
	TURFGRASS Non-irrigated, water-wise blend of warm season fescue and rye turfgrass on sloped hillside amphitheater space and within dog park space. Apply hydroseed during the fall or spring seasons to maximize seed germination and root establishment during periods of cooler temperatures and naturally occurring precipitation.	6,600 sf
	PLAYGROUND SURFACE Natural wood fiber playground surface, engineered to provide fall protection within playground space. Install to a minimum depth of fifteen inches (15") or as required for selected playground equipment and elements.	3,658 sf

SKY LODGE HOTEL
DESIGN REVIEW APPLICATION

POWDER MOUNTAIN, UTAH

DATE:	FEBRUARY 2023
PROJECT:	000.0000.195
DRAWN BY:	AKC
REVIEW BY:	EL
VERSION:	DESIGN REVIEW APP.
REVISIONS:	

SHEET TITLE:
LANDSCAPE & PLANTING PLAN

SHEET NUMBER:
LP103

SHEET KEY:

