



# SAL - WARREN

**verizon**  
wireless

VERIZON WIRELESS  
9656 SOUTH PROSPERITY ROAD  
WEST JORDAN, UTAH 84088

**TAEC**

Technology Associates Engineering Corporation Inc.  
**TECHNOLOGY ASSOCIATES**

**UTAH MARKET OFFICE**  
5710 SOUTH GREEN STREET  
SALT LAKE CITY, UTAH 84123

**CORPORATE OFFICE**  
5473 KEARNY VILLA ROAD, SUITE 300  
SAN DIEGO, CALIFORNIA 92123

DRAWN BY: JAY C  
CHECKED BY: BLYNN S

REV	DATE	DESCRIPTION
4	07.24.2013	UPDATED TO 2013
3	08.13.2009	REVISIONS PER CB
2	08.05.2009	REVISIONS PER NG
1	06.26.2009	REVISIONS PER NG
0	06.16.2009	ZONING DRAWINGS

## SITE INFORMATION

**APPLICANT:**  
VERIZON WIRELESS  
9656 SOUTH PROSPERITY ROAD  
WEST JORDAN, UTAH 84088

**SITE ADDRESS:**  
6061 WEST 900 SOUTH  
OGDEN, UTAH 84404

**LATITUDE AND LONGITUDE:**  
N 41°14'40.27", W 112°07'27.65"

**ZONING JURISDICTION:**  
WEBER COUNTY

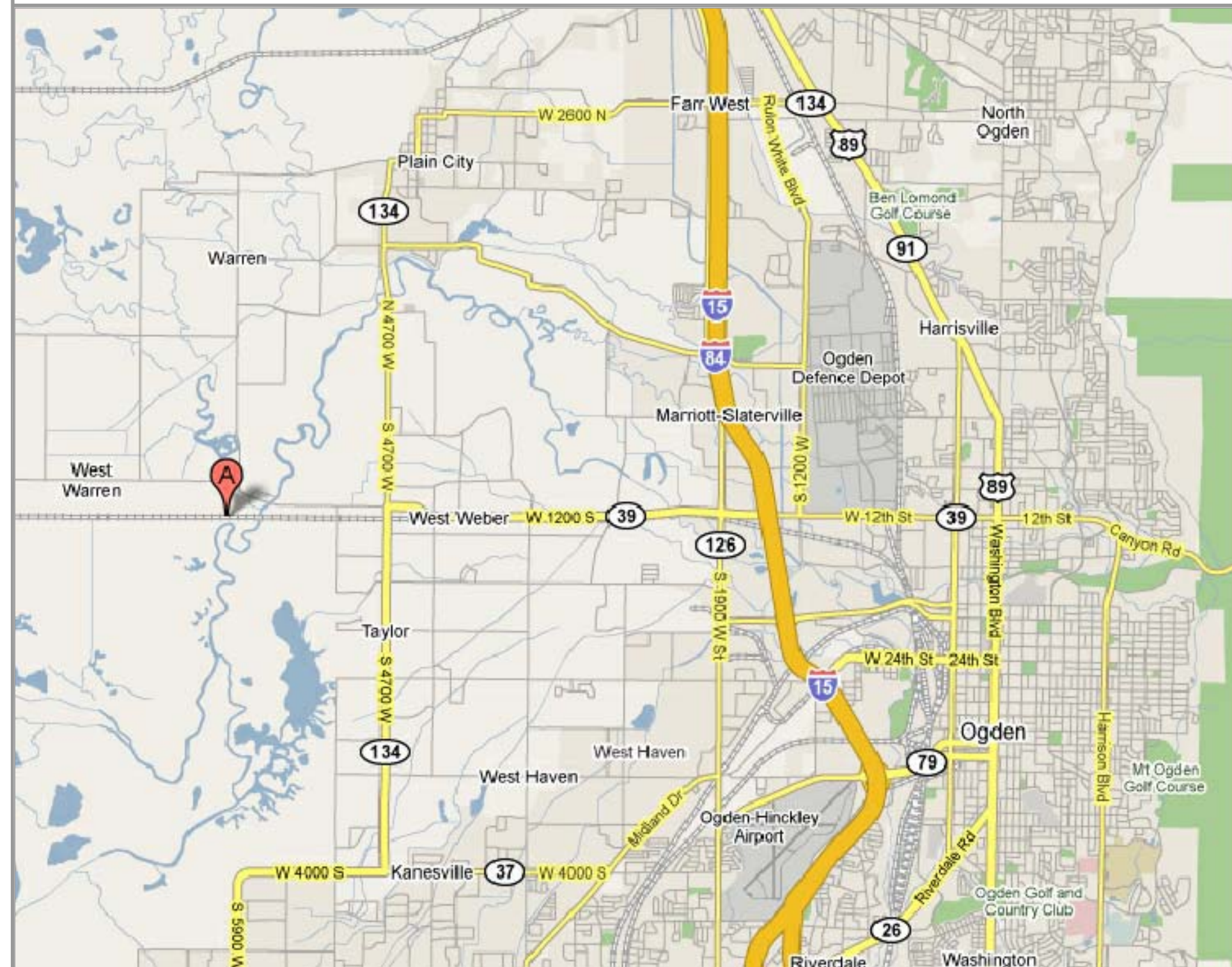
**PROJECT DESCRIPTION:**  
VZW IS PROPOSING TO CONSTRUCT AN UNMANNED TELECOMMUNICATIONS FACILITY CONSISTING OF ANTENNAS MOUNTED TO A NEW MONOPOLE WITH EQUIPMENT LOCATED INSIDE A 11'-6" X 25'-5.5" PREFABRICATED EQUIPMENT SHELTER

**TYPE OF CONSTRUCTION:**  
PRE-FAB SHELTER, MONOPOLE, AND ANTENNAS

**HANDICAP REQUIREMENTS:**  
FACILITY IS UNMANNED AND NOT FOR HUMAN HABITATION, HANDICAP ACCESS REQUIREMENTS DO NOT APPLY

**POWER COMPANY:**  
ROCKY MOUNTAIN POWER, 1-888-221-7070

## LOCATION MAP



## DO NOT SCALE DRAWINGS

CONTRACTOR SHALL VERIFY ALL PLANS, AND EXISTING DIMENSIONS, AND CONDITIONS ON THE JOB SITE, AND SHALL IMMEDIATELY NOTIFY THE ENGINEER IN WRITING OF ANY DISCREPANCIES BEFORE PROCEEDING WITH THE WORK OR BE RESPONSIBLE FOR SAME

## DRIVING DIRECTIONS

FROM SALT LAKE CITY, UT TAKE THE I-15 NORTH TOWARDS OGDEN. TAKE THE 12TH STREET EXIT IN OGDEN AND TURN LEFT (WEST) UPON TAKING EXIT. STAY STRAIGHT ON 12TH STREET HEADING WEST INTO MARRIOTT SLATERVILLE. STAY ON 1200 SOUTH FOR APPROXIMATELY 5 MILES. 1200 SOUTH WILL LATER TURN INTO 1150 SOUTH. ROAD WILL START TO CURVE AND TURN INTO 900 SOUTH AND TAKE A LEFT (SOUTH) INTO DRIVEWAY OF 6061 WEST 900 SOUTH. FOLLOW ACCESS ROAD TO BACK OF THE PROPERTY HEADING SOUTH WHERE SITE SITS.

## APPROVALS

VERIZON WIRELESS REPRESENTATIVE:  
VERIZON WIRELESS RF ENGINEER:  
TAEC SITE ACQUISITION:  
TAEC CONSTRUCTION MANAGER:  
SITE OWNER:

## DRAWING INDEX

SHEET NO.	SHEET TITLE	REV	REV DATE
T100	TITLE SHEET, VICINITY MAP, GENERAL SITE INFORMATION	4	07.24.2013
SURV	SITE SURVEY	1	08.05.2009
C100	OVERALL SITE PLAN	4	07.24.2013
C101	ENLARGED SITE PLAN	4	07.24.2013
C200	SITE ELEVATIONS	4	07.24.2013

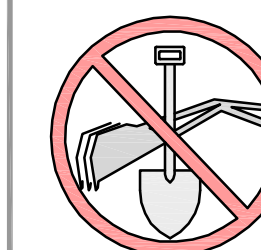
## CONTACT INFORMATION

**SITE ACQUISITION:**  
TECHNOLOGY ASSOCIATES EC, INC  
5710 SOUTH GREEN STREET  
SALT LAKE CITY, UTAH 84123  
CONTACT: BLYNN SIMMONS  
PHONE: 801-589-2995

SAL - WARREN  
NE SEC 24, T6N, R3W  
6061 WEST 900 SOUTH  
OGDEN, UTAH 84404  
-- RAWLAND SITE --

SHEET TITLE  
**TITLE SHEET  
VICINITY MAP  
GENERAL INFORMATION**

SHEET NUMBER  
**T100**



**UNDERGROUND SERVICE ALERT, CALL 'BLUE STAKES OF UTAH' @ 811 OR 1-800-662-4111**  
THREE WORKING DAYS BEFORE YOU DIG







ASAC INFORMATION SHEET 91:003

INFORMATION REGARDING SURVEY DATA SUBMITTED TO THE FAA

FAA Order 8260.19c requires proponents of certain proposed construction (located beneath instrument procedures) provide the FAA with a site survey and/or letter, from a licensed land surveyor, which certifies the site coordinates and the surface elevation at the site. On October 15, 1992, the FAA started using the North American Datum of 1983 (NAD-83), and therefore all site coordinates should be based on NAD-83. The FAA requires that the survey letter contain an accuracy statement that meets accuracy tolerances required by the FAA. The most requested tolerances are +/- 50 feet in the horizontal and +/- 20 feet in the vertical (2-C). When the site coordinates and/or site elevation can be certified to a greater accuracy than requested by the FAA, please do so.

In order to avoid FAA processing delays, the original site survey or certifying letter should be attached to the 7460 when it is filed at the FAA's regional office. It must be signed and sealed by the licensed land surveyor having performed or supervised the survey.

The FAA accuracy codes and a sample accuracy statement are listed below.

ACCURACY CODES:

<u>HORIZONTAL</u>		<u>VERTICAL</u>	
<u>Code</u>	<u>Tolerance</u>	<u>Code</u>	<u>Tolerance</u>
1	+/- 15 ft	A	+/- 3 ft
2	+/- 50 ft	B	+/- 10 ft
3	+/- 100 ft	C	+/- 20 ft
4	+/- 250 ft	D	+/- 50 ft
5	+/- 500 ft	E	+/- 125 ft
6	+/- 1000 ft	F	+/- 250 ft
7	+/- 1/2 NM	G	+/- 500 ft
8	+/- 1 NM	H	+/- 1000 ft
9	Unknown	I	Unknown

Date: AUGUST 5 2009

Re: SAL - WARREN

NE 1/4 OF SECTION 24, TOWNSHIP 6 NORTH, RANGE 3 WEST, SALT LAKE MERIDIAN  
6061 WEST 900 SOUTH, WEBER COUNTY, OGDEN CITY, UTAH 84404

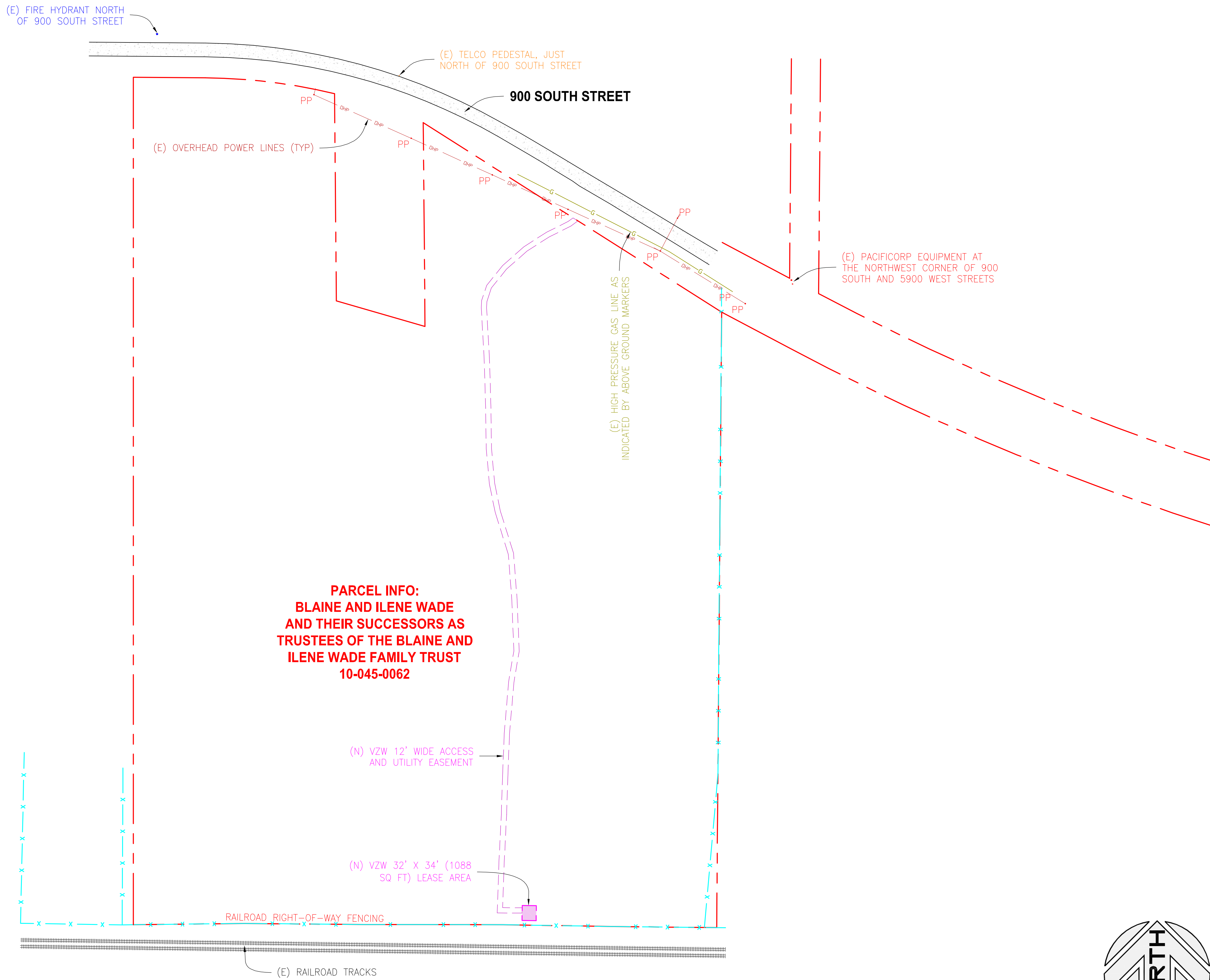
I certify that the latitude of N 41°14'40.27", and the longitude of W 112°07'27.65", are accurate to within 15 feet horizontally and the site elevation of 4217.32 feet, AMSL (American Mean Sea Level), is accurate to within +/- 3 feet vertical. With a proposed structure height of 126 feet AGL, the overall height would be 4343.32 feet AMSL. The horizontal datum (coordinates) are in terms of the North American Datum of 1983 (NAD-83) and are expressed as degrees, minutes and seconds, to the nearest (tenth/hundredth) of a second. The vertical datum (heights) are in terms of the (NAVD88) and are determined to the nearest foot.



Professional Licensed Land Surveyor:

1-A FAA Letter

Richard W. Miller  
Utah LS no. 155641



**verizon**  
wireless

**VERIZON WIRELESS**  
9656 SOUTH PROSPERITY ROAD  
WEST JORDAN, UTAH 84088

**TAEC**

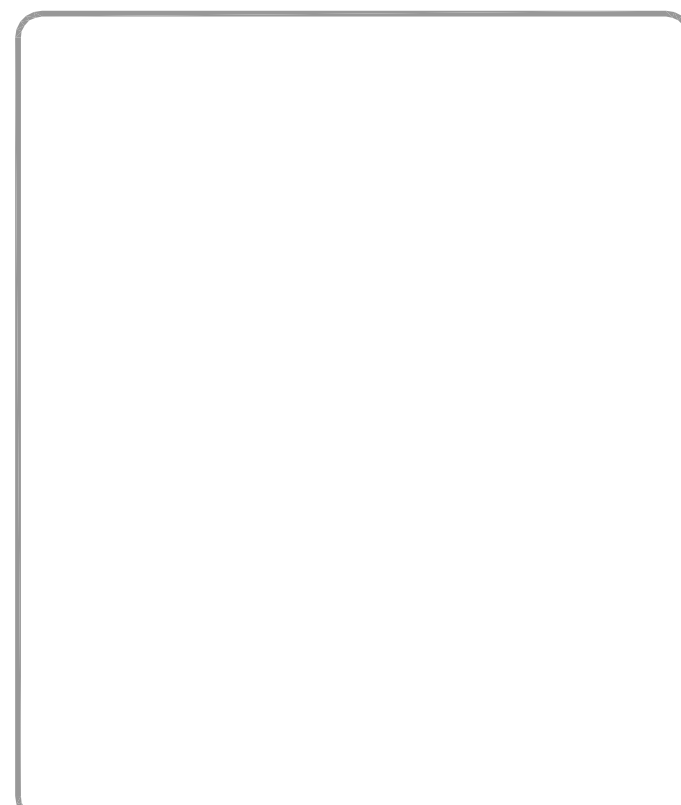
Technology Associates Engineering Corporation Inc.  
**TECHNOLOGY ASSOCIATES**

**UTAH MARKET OFFICE**  
5710 SOUTH GREEN STREET  
SALT LAKE CITY, UTAH 84123

**CORPORATE OFFICE**  
5473 KEARNY VILLA ROAD, SUITE 300  
SAN DIEGO, CALIFORNIA 92123

DRAWN BY: JAY C  
CHECKED BY: BLYNN S

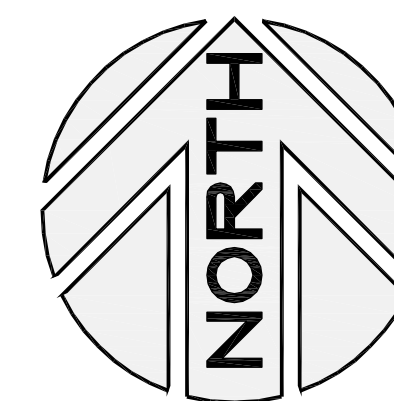
REV	DATE	DESCRIPTION
4	07.24.2013	UPDATED TO 2013
3	08.13.2009	REVISIONS PER CB
2	08.05.2009	REVISIONS PER NG
1	06.26.2009	REVISIONS PER NG
0	06.16.2009	ZONING DRAWINGS



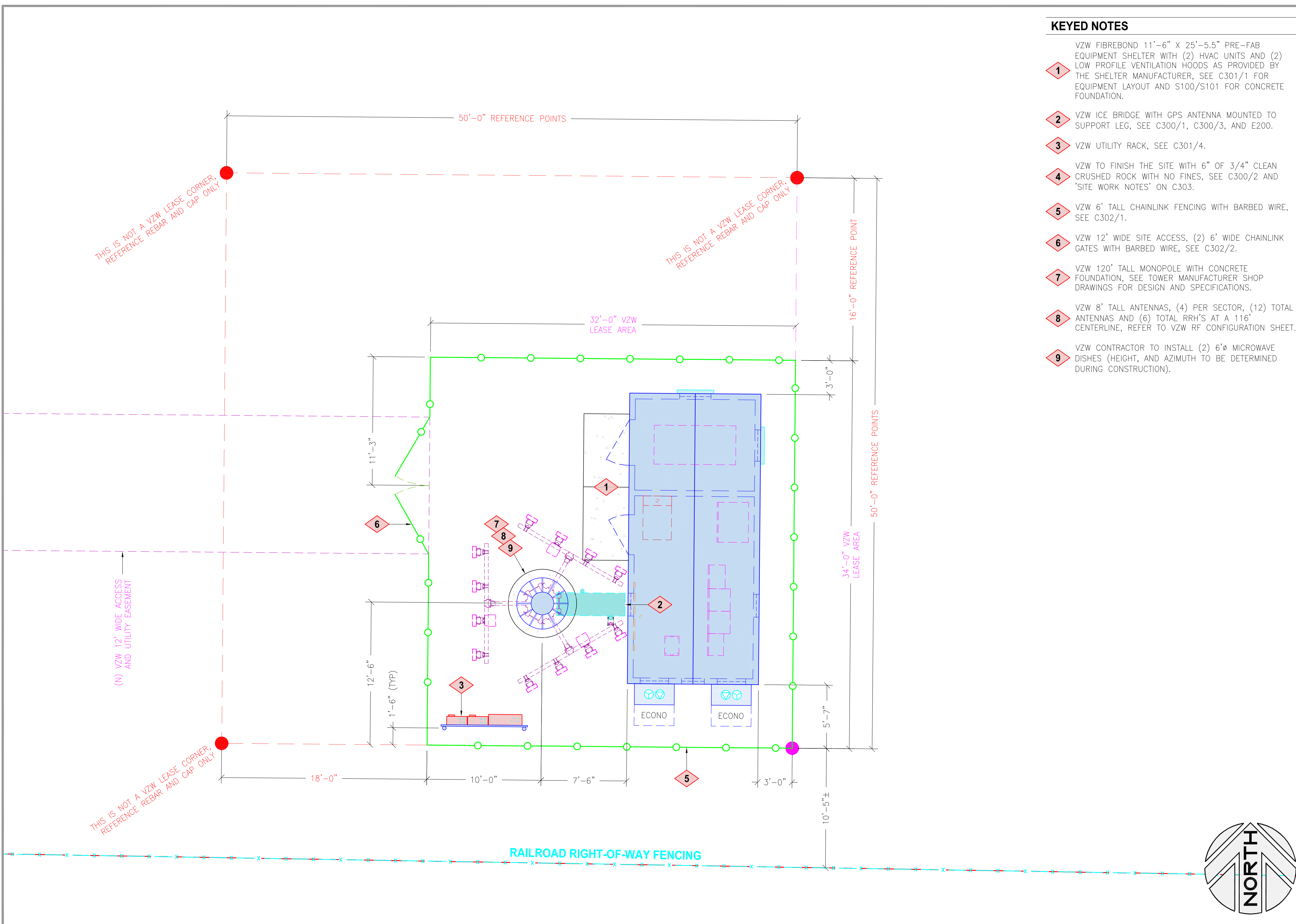
SAL - WARREN  
NE SEC 24, T6N, R3W  
6061 WEST 900 SOUTH  
OGDEN, UTAH 84404  
-- RAWLAND SITE --

SHEET TITLE  
**OVERALL SITE PLAN**

SHEET NUMBER  
**C100**







**KEYED NOTES**

- 1 VZW FIBREBOND 11'-6" X 25'-5.5" PRE-FAB EQUIPMENT SHELTER WITH (2) HVAC UNITS AND (2) LOW PROFILE VENTILATION HOODS AS PROVIDED BY THE SHELTER MANUFACTURER, SEE C301/1 FOR EQUIPMENT LAYOUT AND S100/S101 FOR CONCRETE FOUNDATION.
- 2 VZW ICE BRIDGE WITH GPS ANTENNA MOUNTED TO SUPPORT LEG, SEE C300/1, C300/3, AND E200.
- 3 VZW UTILITY RACK, SEE C301/4.
- 4 VZW TO FINISH THE SITE WITH 6" OF 3/4" CLEAN CRUSHED ROCK WITH NO FINES, SEE C300/2 AND 'SITE WORK NOTES' ON C303.
- 5 VZW 6' TALL CHAINLINK FENCING WITH BARBED WIRE, SEE C302/1.
- 6 VZW 12' WIDE SITE ACCESS, (2) 6' WIDE CHAINLINK GATES WITH BARBED WIRE, SEE C302/2.
- 7 VZW 120' TALL MONOPOLE WITH CONCRETE FOUNDATION, SEE TOWER MANUFACTURER SHOP DRAWINGS FOR DESIGN AND SPECIFICATIONS.
- 8 VZW 8' TALL ANTENNAS, (4) PER SECTOR, (12) TOTAL ANTENNAS AND (6) TOTAL RRH'S AT A 116' CENTERLINE, REFER TO VZW RF CONFIGURATION SHEET.
- 9 VZW CONTRACTOR TO INSTALL (2) 6' MICROWAVE DISHES (HEIGHT, AND AZIMUTH TO BE DETERMINED DURING CONSTRUCTION).



**VERIZON WIRELESS**  
 9656 SOUTH PROSPERITY ROAD  
 WEST JORDAN, UTAH 84088

**TAEC**  
 Technology Associates Engineering Corporation Inc.  
**TECHNOLOGY ASSOCIATES**

**UTAH MARKET OFFICE**  
 5710 SOUTH GREEN STREET  
 SALT LAKE CITY, UTAH 84123

**CORPORATE OFFICE**  
 5473 KEARNY VILLA ROAD, SUITE 300  
 SAN DIEGO, CALIFORNIA 92123

DRAWN BY: JAY C  
 CHECKED BY: BLYNN S

REV	DATE	DESCRIPTION
4	07.24.2013	UPDATED TO 2013
3	08.13.2009	REVISIONS PER CB
2	08.05.2009	REVISIONS PER NG
1	06.26.2009	REVISIONS PER NG
0	06.16.2009	ZONING DRAWINGS

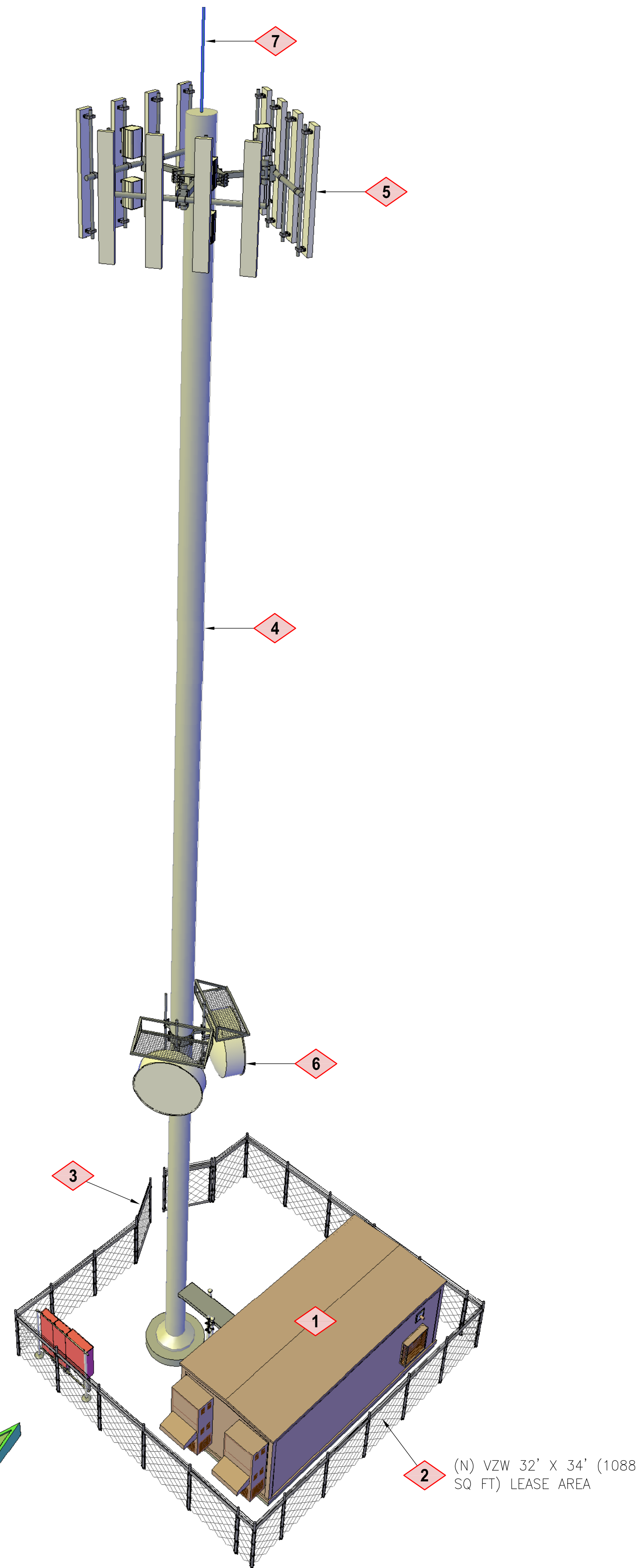
SAL - WARREN  
 NE SEC 24, T6N, R3W  
 6061 WEST 900 SOUTH  
 OGDEN, UTAH 84404  
 -- RAWLAND SITE --

SHEET TITLE  
**ENLARGED SITE PLAN**

SHEET NUMBER  
**C101**

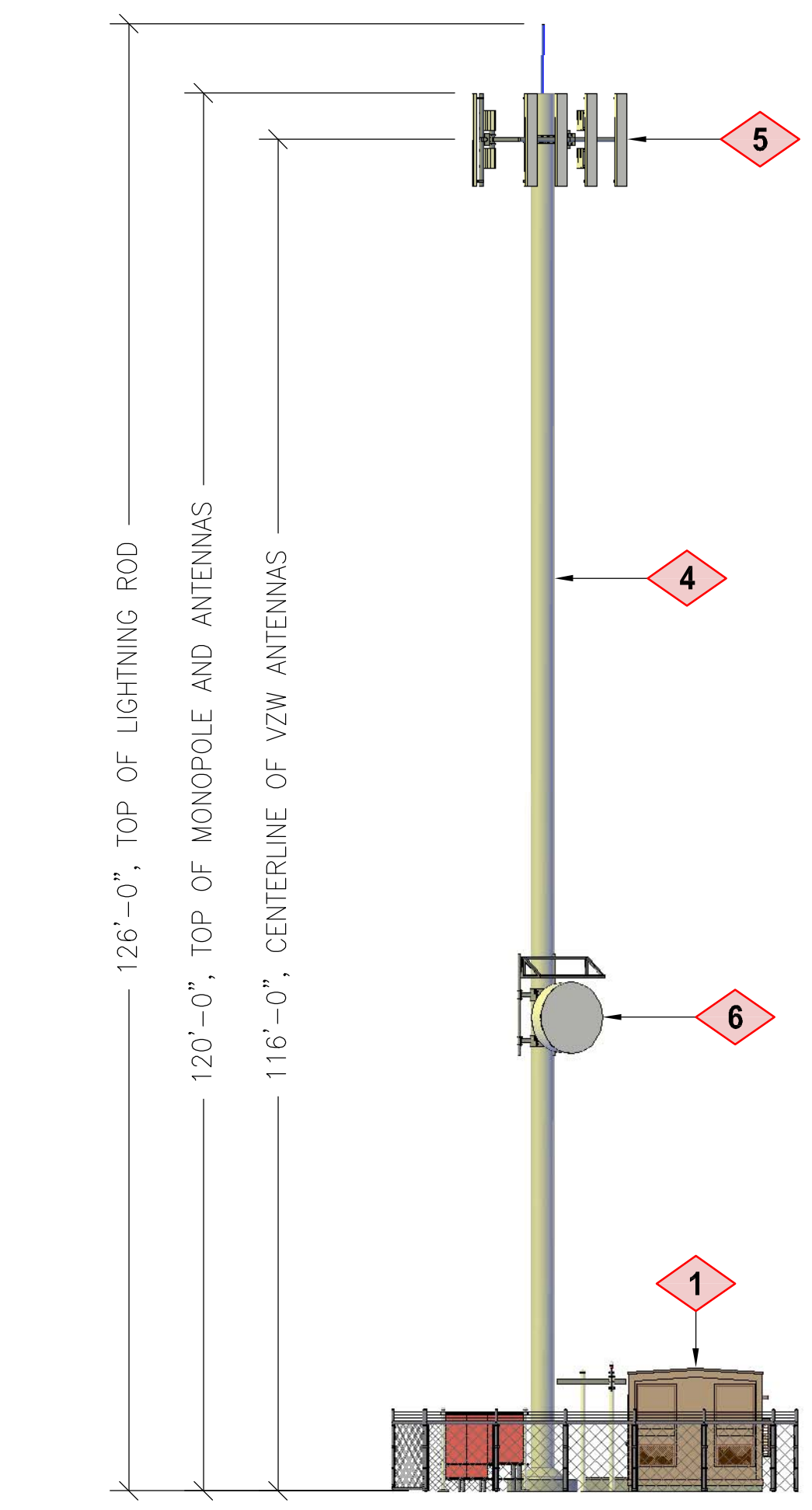
**KEYED NOTES**

- 1** VZW FIBREBOND 11'-6" X 25'-5.5" PRE-FAB EQUIPMENT SHELTER WITH (2) HVAC UNITS AND (2) LOW PROFILE VENTILATION HOODS AS PROVIDED BY THE SHELTER MANUFACTURER, SEE C301/1 FOR EQUIPMENT LAYOUT AND S100/S101 FOR CONCRETE FOUNDATION.
- 2** VZW 6' TALL CHAINLINK FENCING WITH BARBED WIRE, SEE C302/1.
- 3** VZW 12' WIDE SITE ACCESS, (2) 6' WIDE CHAINLINK GATES WITH BARBED WIRE, SEE C302/2.
- 4** VZW 120' TALL MONOPOLE WITH CONCRETE FOUNDATION, SEE TOWER MANUFACTURER SHOP DRAWINGS FOR DESIGN AND SPECIFICATIONS.
- 5** VZW 8' TALL ANTENNAS, (4) PER SECTOR, (12) TOTAL ANTENNAS AND (6) TOTAL RRH'S AT A 116' CENTERLINE, REFER TO VZW RF CONFIGURATION SHEET.
- 6** VZW CONTRACTOR TO INSTALL (2) 6'Ø MICROWAVE DISHES (HEIGHT, AND AZIMUTH TO BE DETERMINED DURING CONSTRUCTION).
- 7** VZW CONTRACTOR TO INSTALL THE 6' TALL LIGHTNING ROD AS SUPPLIED BY TOWER MANUFACTURER.

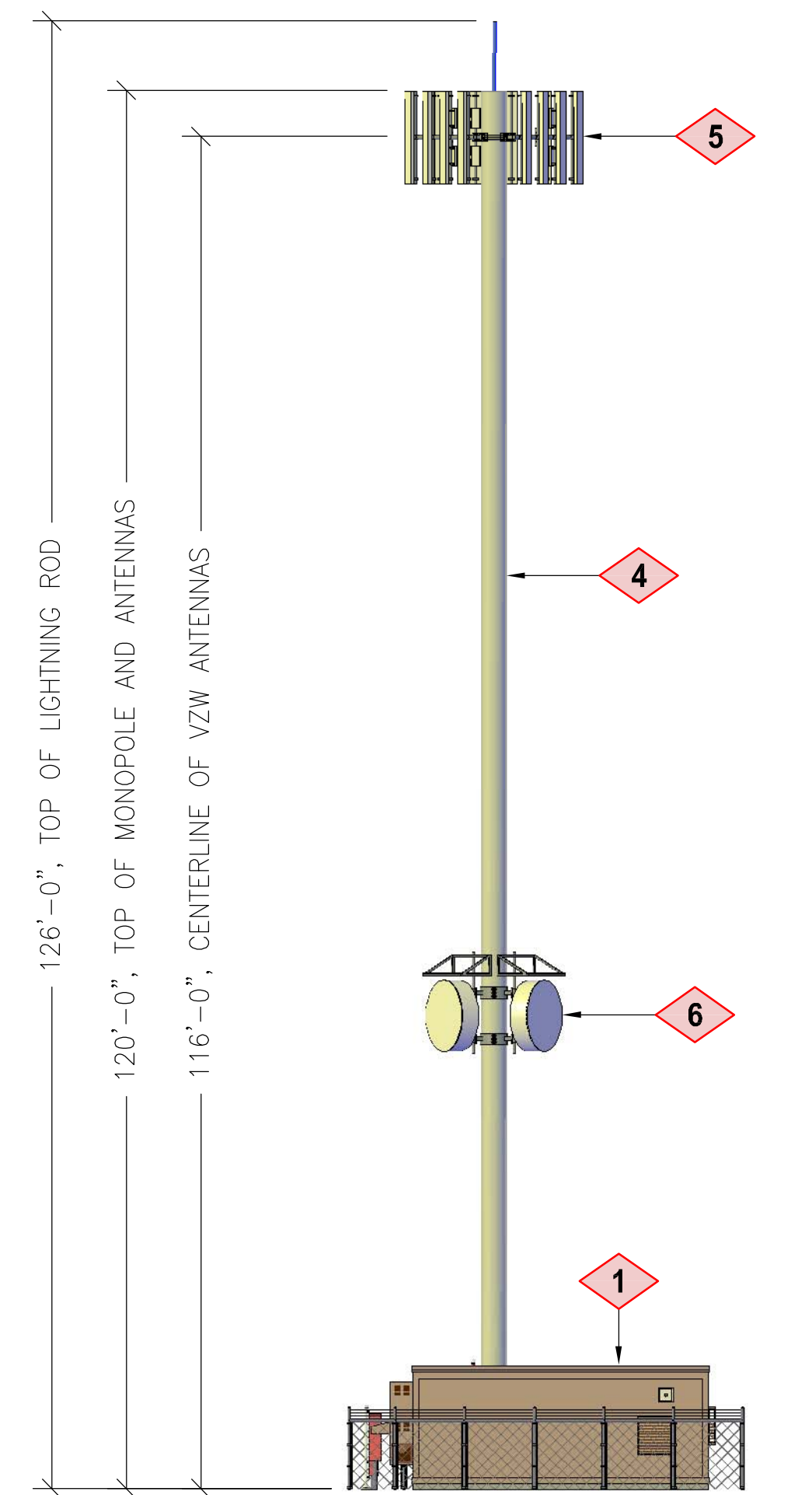


**2** (N) VZW 32' X 34' (1088 SQ FT) LEASE AREA

**SITE ELEVATION**  
NORTHWEST VIEW



**SITE ELEVATION**  
LOOKING NORTH



**SITE ELEVATION**  
LOOKING WEST



**VERIZON WIRELESS**  
9656 SOUTH PROSPERITY ROAD  
WEST JORDAN, UTAH 84088

**TAEC**  
Technology Associates Engineering Corporation Inc.  
**TECHNOLOGY ASSOCIATES**

**UTAH MARKET OFFICE**  
5710 SOUTH GREEN STREET  
SALT LAKE CITY, UTAH 84123

**CORPORATE OFFICE**  
5473 KEARNY VILLA ROAD, SUITE 300  
SAN DIEGO, CALIFORNIA 92123

DRAWN BY: JAY C  
CHECKED BY: BLYNN S

REV	DATE	DESCRIPTION
4	07.24.2013	UPDATED TO 2013
3	08.13.2009	REVISIONS PER CB
2	08.05.2009	REVISIONS PER NG
1	06.26.2009	REVISIONS PER NG
0	06.16.2009	ZONING DRAWINGS

SAL - WARREN  
NE SEC 24, T6N, R3W  
6061 WEST 900 SOUTH  
OGDEN, UTAH 84404  
-- RAWLAND SITE --

SHEET TITLE  
**SITE ELEVATIONS**

SHEET NUMBER  
**C200**