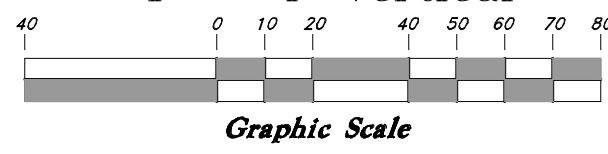


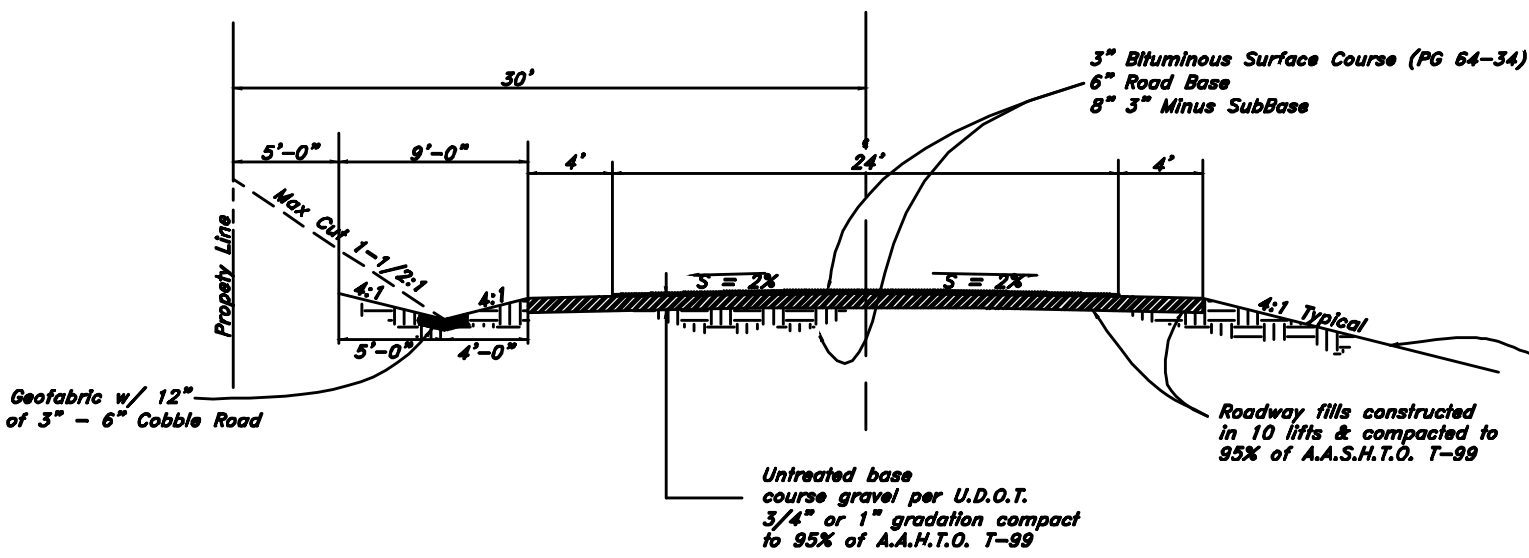
Scale:
1" = 40' Horiz.
1" = 4' Vertical



Legend

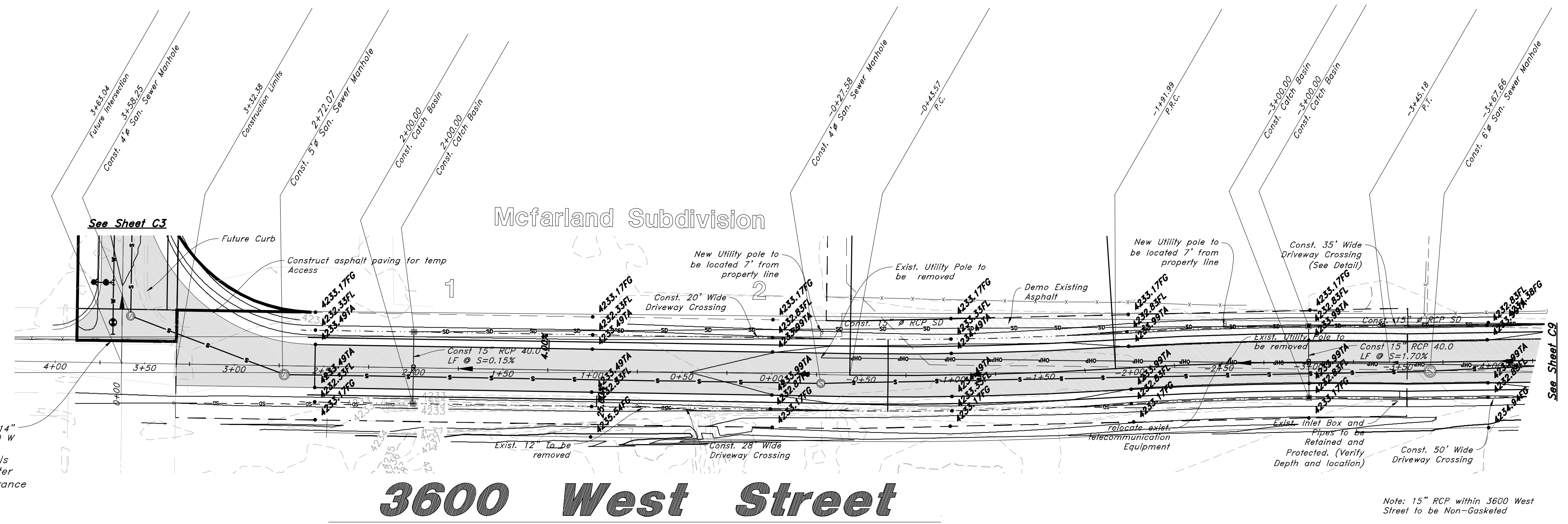
(Note: All items may not appear on drawing)

- San. Sewer Manhole
- Water Manhole
- Storm Drain Manhole
- Cleanout
- Electrical Manhole
- Catch Basins
- Exist. Fire Hydrant
- Fire Hydrant
- Exist. Water Valve
- Water Valve
- Sanitary Sewer
- Culinary Water
- Gas Line
- Irrigation Line
- Storm Drain
- Telephone Line
- Secondary Waterline
- Power Line
- Fire Line
- Land Drain
- Power pole
- Power pole w/guy
- Light Pole
- Fence
- Flowline of ditch
- Overhead Power line
- Corrugated Metal Pipe
- Concrete Pipe
- Reinforced Concrete Pipe
- Ductile Iron
- PVC
- Polyvinyl Chloride
- Top of Asphalt
- Edge of Asphalt
- Centerline
- Flowline
- Finish Floor
- Top of Curb
- Top of Wall
- Top of Walk
- Top of Concrete
- Natural Ground
- Finish Grade
- Match Existing
- Fire Department Connection
- Finish Contour
- Exist. Contour
- Finish Grade
- Exist. Grade
- Ridge Line



Standard Rural Roadway Section

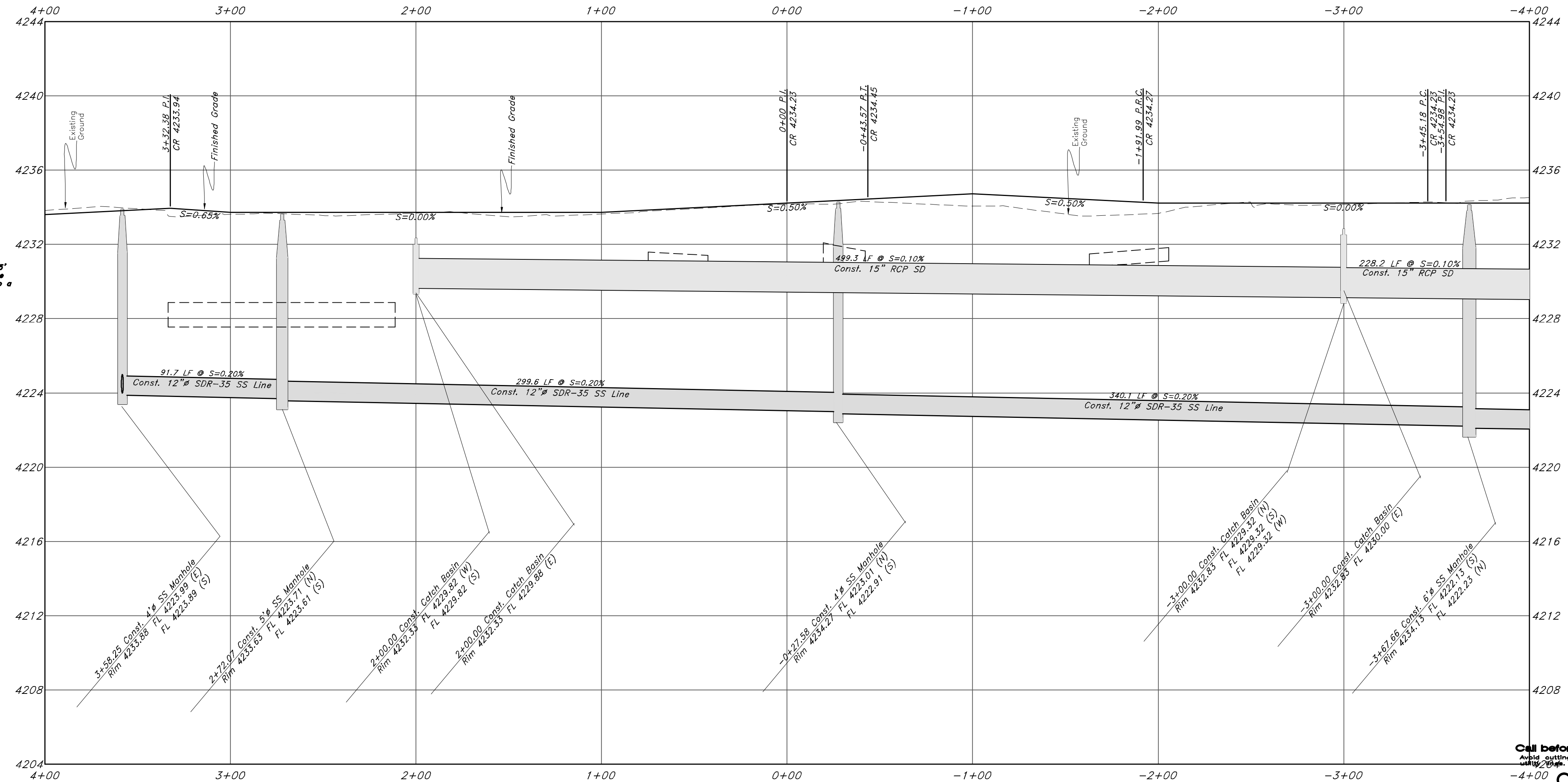
Not to Scale



NOTES:
1. All sewer mains and laterals crossing under culinary water with less than 18" of clearance shall be sleeved per TWW standard drawings

For Review

10/13/2022 2:12:02 PM



Call before you Dig
Avoid cutting underground utilities.

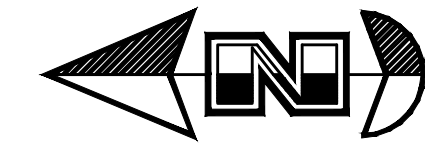


GREAT BASIN ENGINEERING
 574 SOUTH 1475 EAST, BODEN, UTAH 84403
 MAIN 801.944.4515 SLC 801.521.0222 FAX 801.392.7544
 WWW.GREATBASINENGINEERING.COM

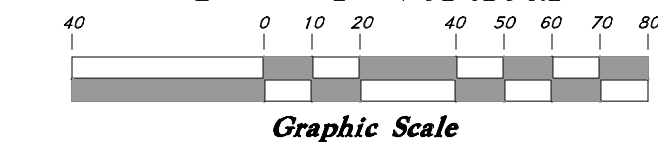
Plan & Profile
Terakee Farm PRUD No. 1
 Approximately 1000 North 3600 West
 Weber County, Utah
 A part of Section 9, T6N, R2W, SLB&M, U.S. Survey

June 2022
 SHEET NO. **C8**
 of 11
 16N704 - AM-1

CONSTRUCTION SITE



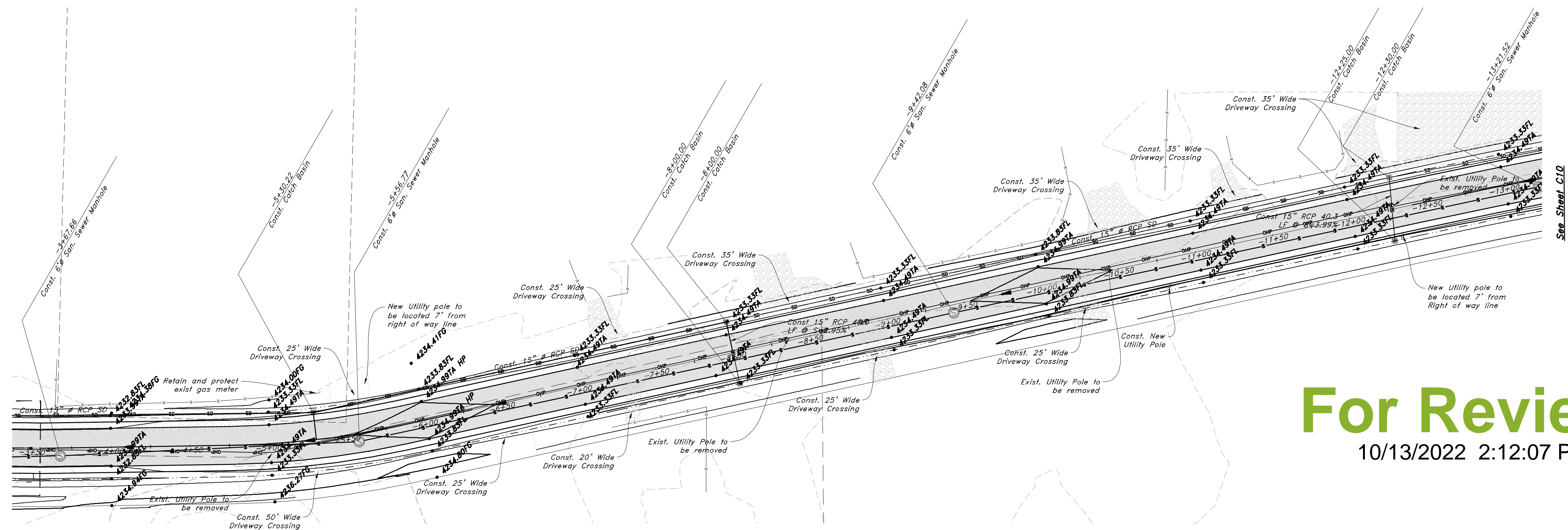
Scale:
1" = 40' Horiz.
1" = 4' Vertical



Legend

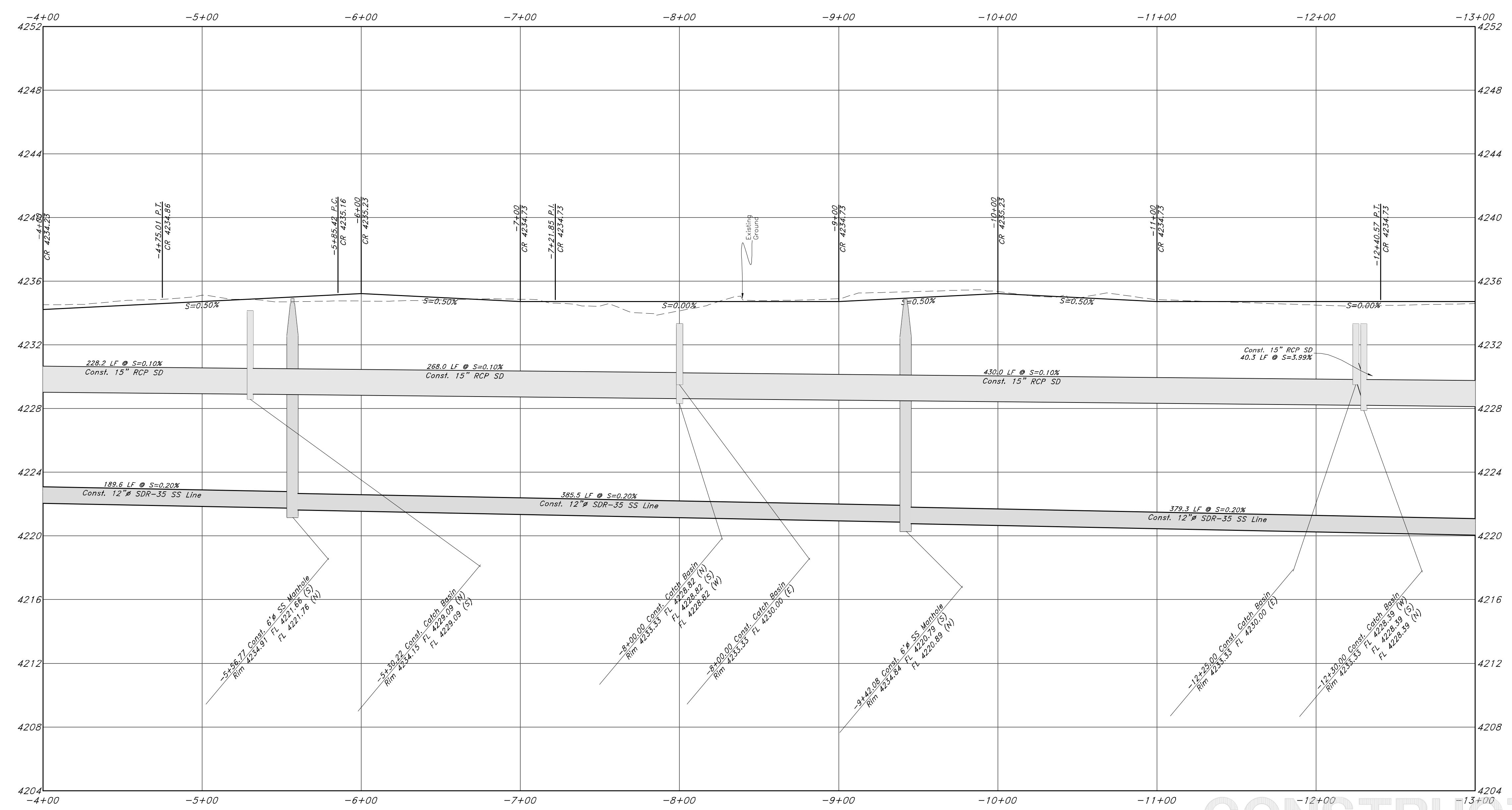
(Note: All items may not appear on drawing)

- San. Sewer Manhole
- Water Manhole
- Storm Drain Manhole
- Cleanout
- Electrical Manhole
- Catch Basins
- Exist. Fire Hydrant
- Fire Hydrant
- Exist. Water Valve
- Water Valve
- Sanitary Sewer
- Culinary Water
- Gas Line
- Irrigation Line
- Storm Drain
- Telephone Line
- Secondary Waterline
- Power Line
- Fire Line
- Land Drain
- Power pole
- Power pole w/guy
- Light Pole
- Fence
- Flowline of ditch
- Overhead Power line
- Corrugated Metal Pipe
- Concrete Pipe
- Reinforced Concrete Pipe
- Cast Iron
- Polyvinyl Chloride
- Top of Asphalt
- Edge of Asphalt
- Centerline
- Flowline
- Finish Floor
- Top of Curb
- Top of Wall
- Top of Walk
- Top of Concrete
- Natural Ground
- Finish Grade
- Match Existing
- Fire Department Connection
- Finish Contour
- Exist. Contour
- Finish Grade
- Exist. Grade
- Ridge Line



For Review
10/13/2022 2:12:07 PM

3600 West Street

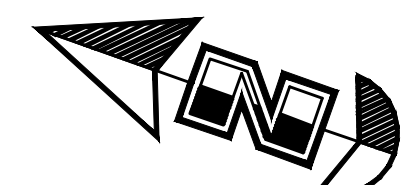


GREAT BASIN ENGINEERING
 574 SOUTH 1475 EAST, SUITE 100, UTAH 84403
 MAIN 801-944-4515, FAX 801-944-7544
 WWW.GREATBASINENGINEERING.COM

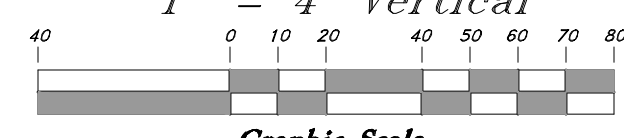
Plan & Profile
Terakee Farm PRUD No. 1
 Approximately 1000 North 3600 West
 Weber County, Utah
 A part of Section 9, T6N, R2W, SLB&M, U.S. Survey

June 2022
 SHEET NO.
C9
 of 11
 16N704 - AM-1

CONSTRUCTION SERVICES



Scale:
 1" = 40' Horiz.
 1" = 4' Vertical



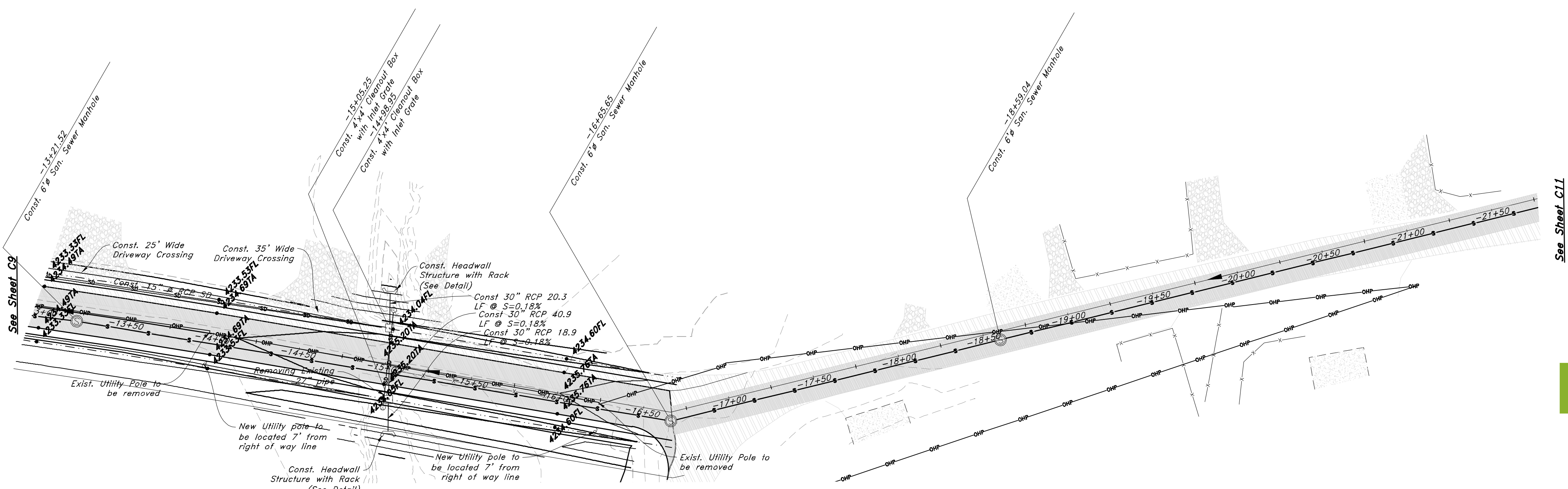
Legend

(Note: All items may not appear on drawing)

- San. Sewer Manhole
- Water Manhole
- Storm Drain Manhole
- Cleanout
- Electrical Manhole
- Catch Basins
- Exist. Fire Hydrant
- Fire Hydrant
- Exist. Water Valve
- Water Valve
- Sanitary Sewer
- Culinary Water
- Gas Line
- Irrigation Line
- Storm Drain
- Telephone Line
- Secondary Waterline
- Power Line
- Fire Line
- Land Drain
- Power pole
- Power pole w/guy
- Light Pole
- Fence
- Flowline of ditch
- Overhead Power line
- Corrugated Metal Pipe
- Concrete Pipe
- Reinforced Concrete Pipe
- Ductile Iron
- Polyvinyl Chloride
- Top of Asphalt
- Edge of Asphalt
- Centerline
- Flowline
- Finish Floor
- Top of Curb
- Top of Wall
- Top of Walk
- Natural Ground
- Finish Grade
- Match Existing
- Fire Department Connection
- Finish Contour
- Exist. Contour
- Finish Grade
- Exist. Grade
- Ridge Line

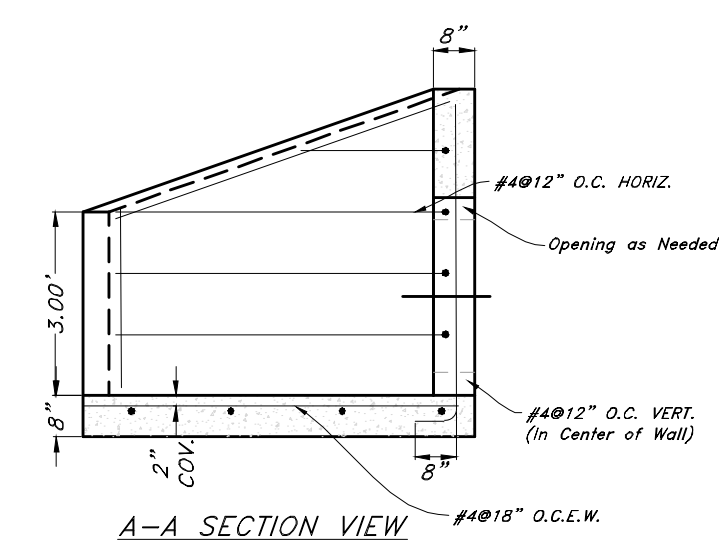
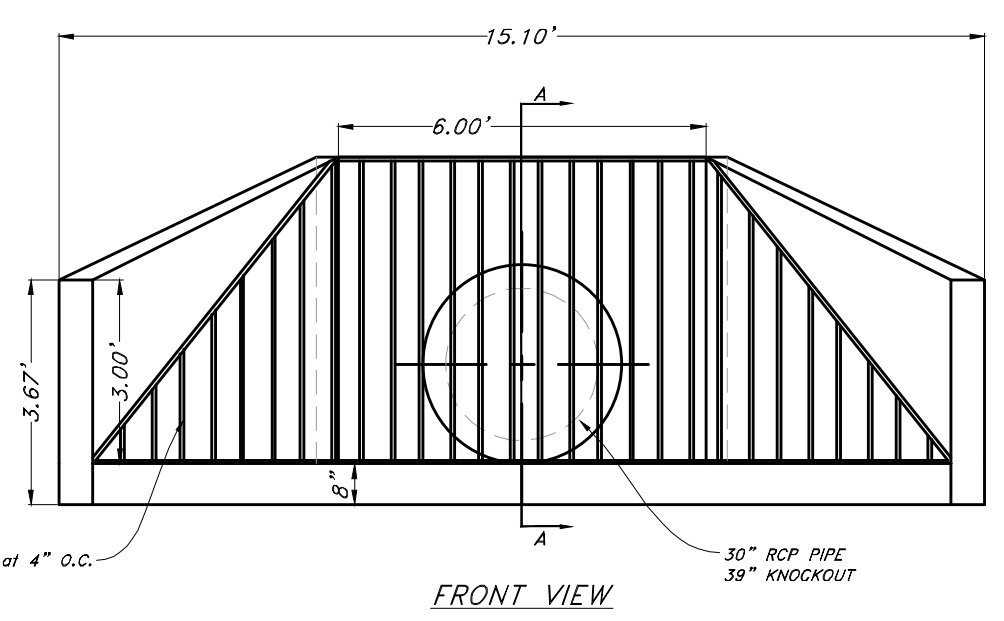
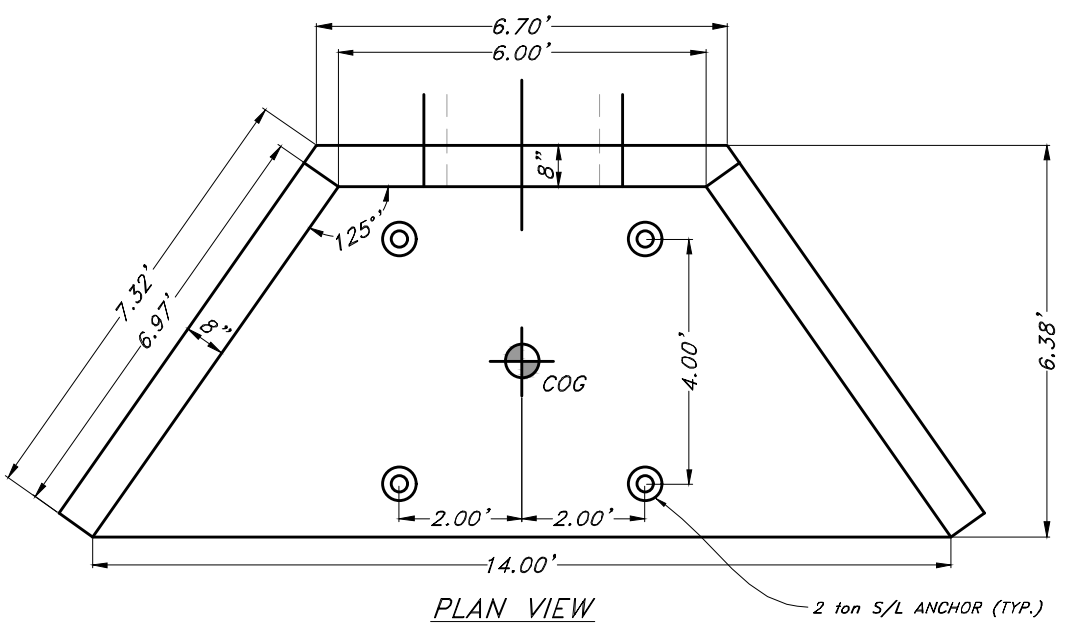
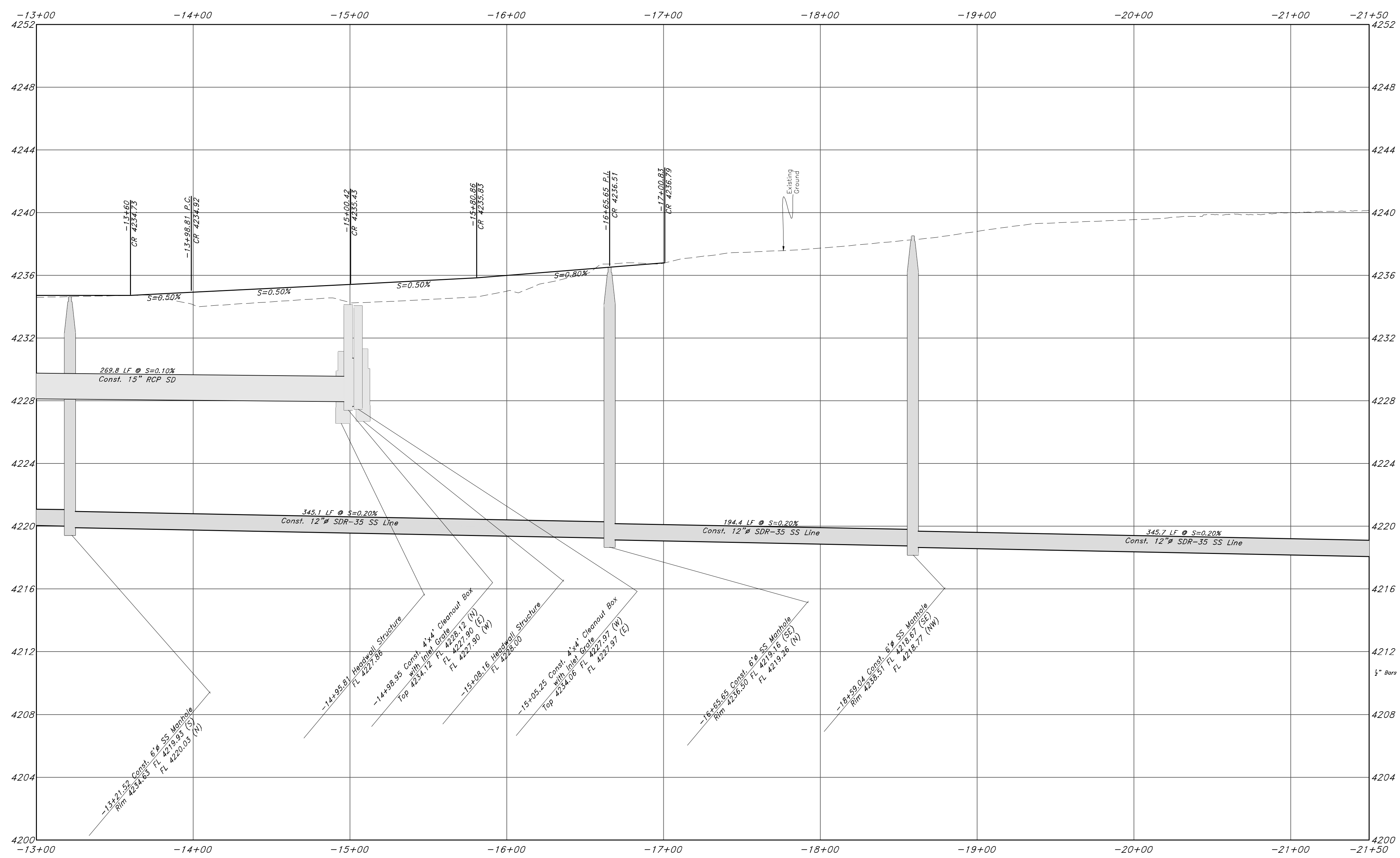
For Review

10/13/2022 2:12:11 PM



3600 West Street

Note: 15" RCP within 3600 West Street to be Non-Gasketed



HEADWALL STRUCTURE WITH TRASHRACK

Call before you Dig
 Avoid cutting underground utility lines. It's the easy way.



GREAT BASIN ENGINEERING

574 SOUTH 1475 EAST, SUITE 100, UTAH 84403
 MAIN 801.994.4515 FAX 801.992.7544
 WWW.GREATBASINENGINEERING.COM

Plan & Profile

Terakee Farm PRUD No. 1

Approximately 1000 North 3600 West
 Weber County, Utah

A part of Section 9, T6N, R2W, SLB&M, U.S. Survey

June 2022

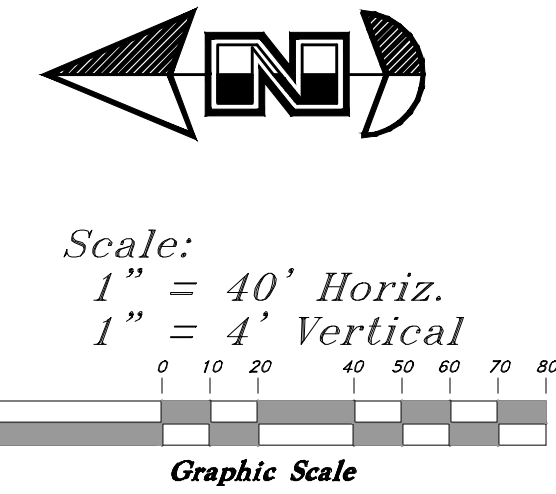
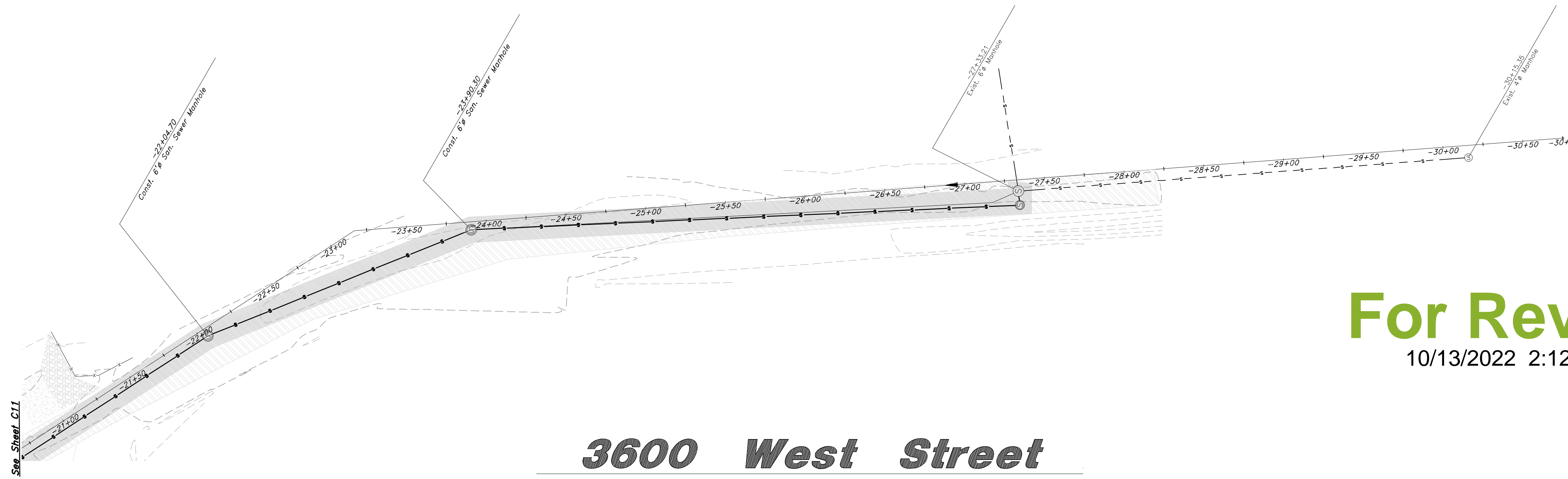
SHEET NO.

C10

of 11

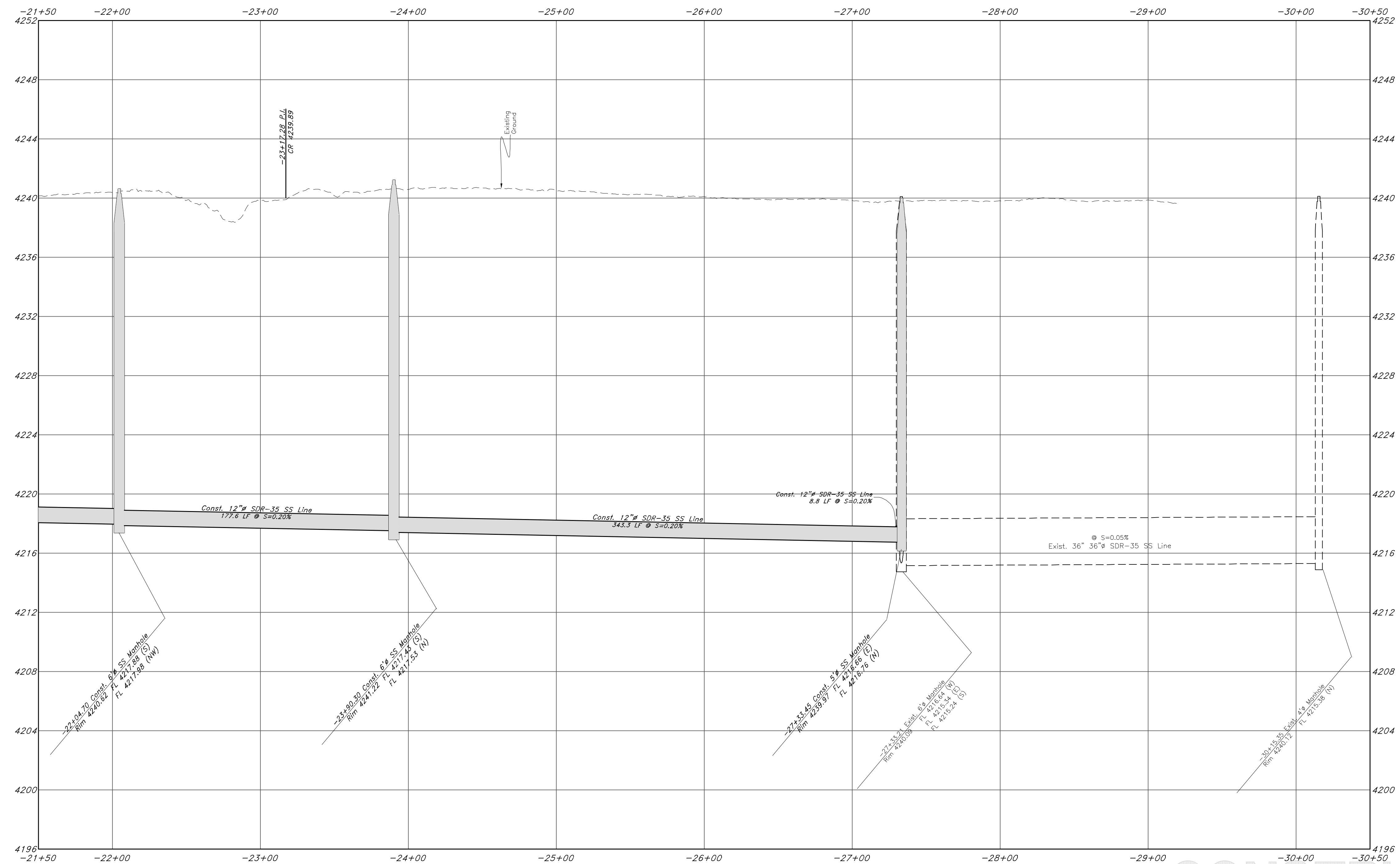
16N704 - AM-1

CONSTRUCTION SERVICES



For Review
10/13/2022 2:12:14 PM

3600 West Street



REV	DATE	DESCRIPTION
1	08-02-2022	Don White Utility Water Comments
1	10-12-2022	Storm, Sewer, and Sewer Along 3600 West Street

GREAT BASIN ENGINEERING

574 SOUTH 1475 EAST, BOYDEN, UTAH 84403
 MAIN 801.394.4515, FAX 801.392.7544
 WWW.GREATBASINENGINEERING.COM

Plan & Profile

Terakee Farm PRUD No. 1

Approximately 1000 North 3600 West
 Weber County, Utah

A part of Section 9, T6N, R2W, SLB&M, U.S. Survey

June 2022

SHEET NO. **C11** of 11

1-800-862-4111



CONSTRUCTION SERVICES