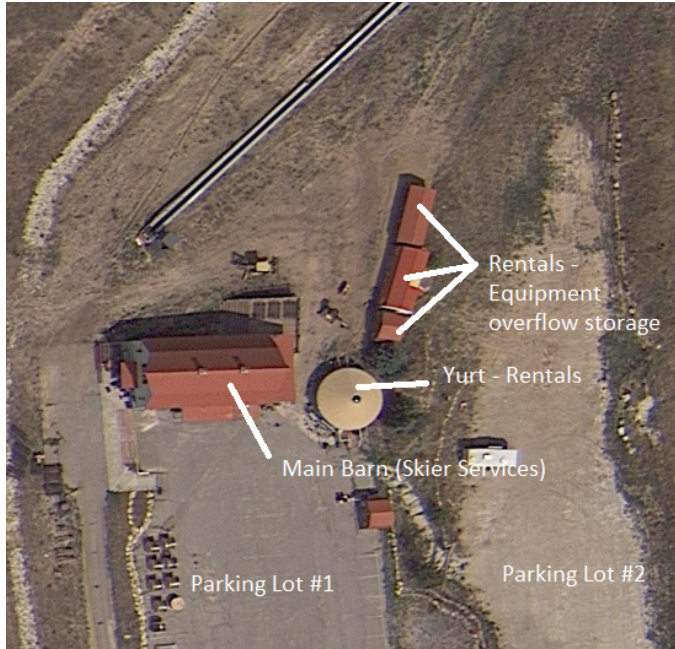


## Landscaping Plan

Nordic Valley - Yurts Project  
Permit Number: CUP2020-03

### **Existing Landscape - Rental Operations**



The Rental Operations at Nordic Valley currently consists of (1) 30 ft. yurt (706 sqft). Inside: Two (2) point-of-sales and six (6) boot fitting stations, helmets and poles storage. Three (3) sheds are currently used for ski/snowboard storage as well as ski/snowboard technical adjustments.

### **Proposed Landscape- Rental Operations**



Two (2) additional 30 ft. yurts would be built for additional boot fitting stations, technical adjustments stations and ski/snowboard storage. Offering a new 1,412 sqft for customer oriented rental operations

With the addition of the two (2) 30 ft. yurt we will remove two of the sheds (the two marked with a red X)