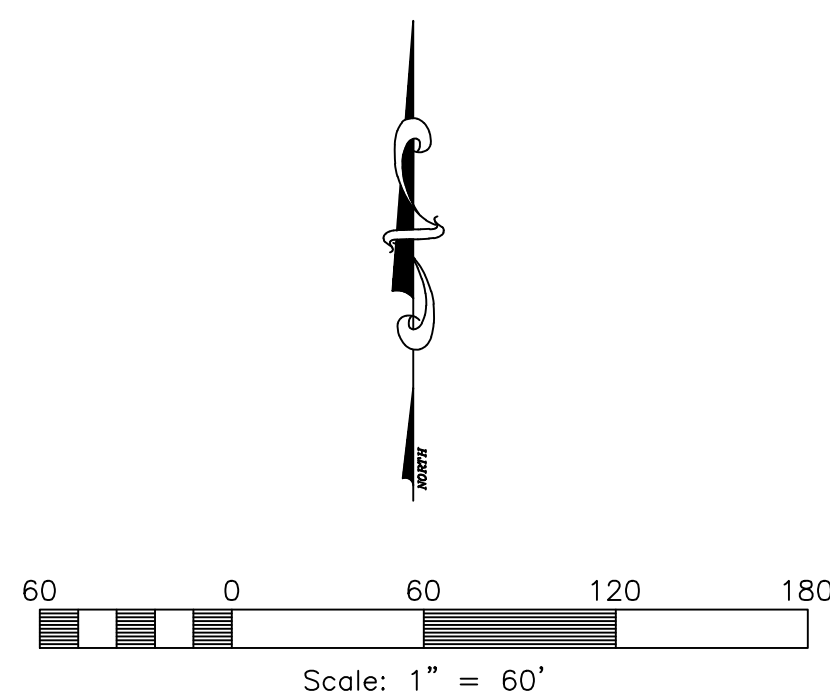
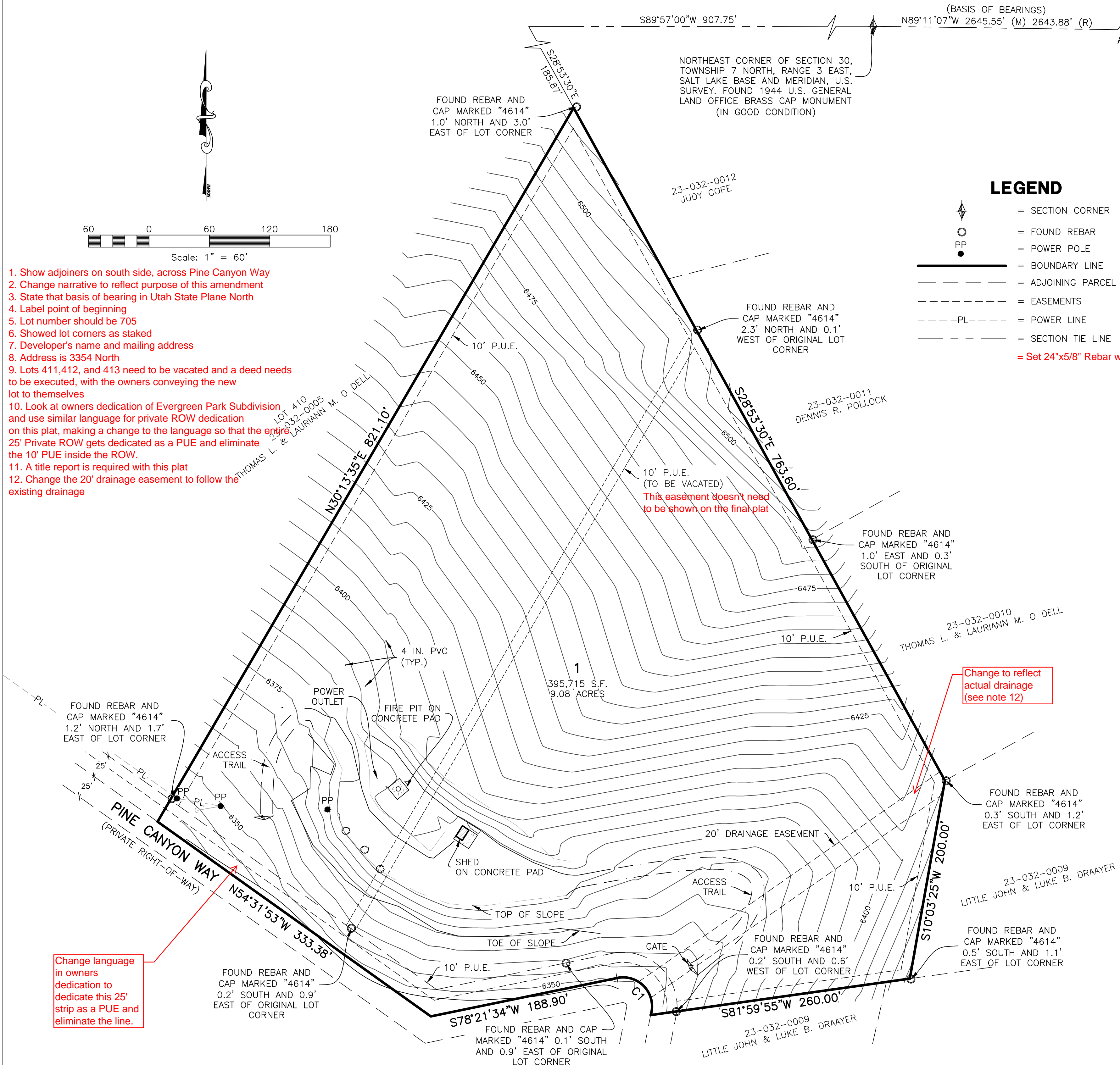


# EVERGREEN PARK SUBDIVISION NO. 1, 1ST AMENDMENT

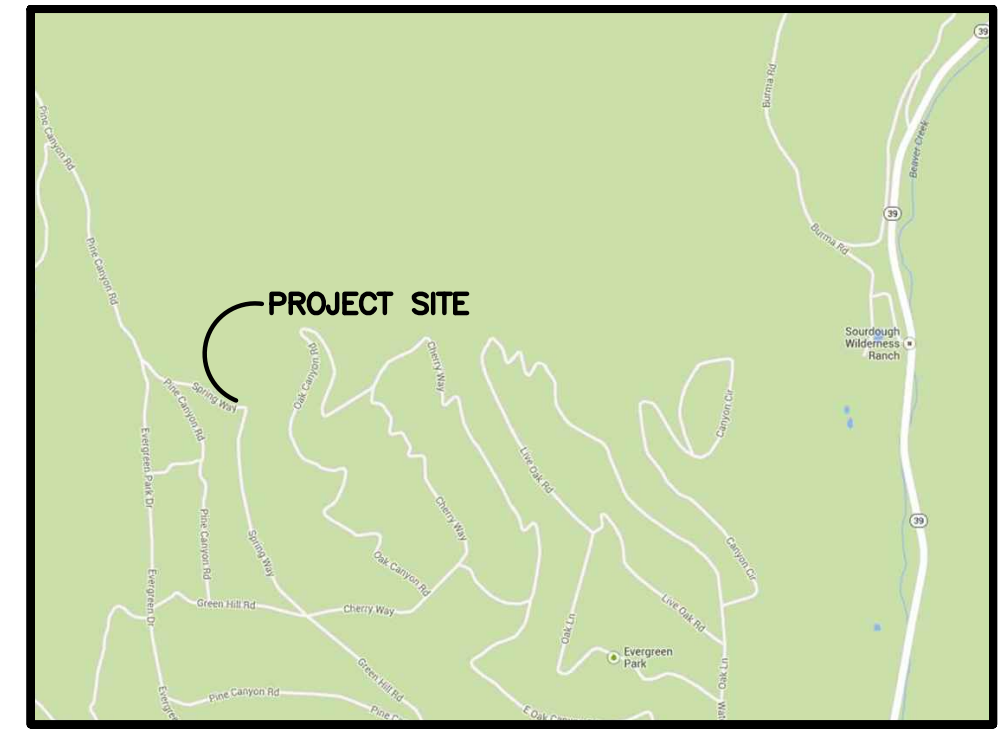
AMENDING LOTS 411, 412, AND 413  
 PART OF THE NORTHEAST QUARTER OF SECTION 30, TOWNSHIP 7 NORTH, RANGE 3 EAST, SALT LAKE BASE AND MERIDIAN, U.S. SURVEY  
 WEBER COUNTY, UTAH SEPTEMBER, 2013



- Show adjoiners on south side, across Pine Canyon Way
- Change narrative to reflect purpose of this amendment
- State that basis of bearing in Utah State Plane North
- Label point of beginning
- Lot number should be 705
- Showed lot corners as staked
- Developer's name and mailing address
- Address is 3354 North
- Lots 411, 412, and 413 need to be vacated and a deed needs to be executed, with the owners conveying the new lot to themselves
- Look at owners dedication of Evergreen Park Subdivision and use similar language for private ROW dedication on this plat, making a change to the language so that the entire 25' Private ROW gets dedicated as a PUE and eliminate the 10' PUE inside the ROW.
- A title report is required with this plat
- Change the 20' drainage easement to follow the existing drainage

### LEGEND

- = SECTION CORNER
  - = FOUND REBAR
  - = POWER POLE
  - = BOUNDARY LINE
  - - - = ADJOINING PARCEL
  - - - = EASEMENTS
  - - - PL - - - = POWER LINE
  - - - = SECTION TIE LINE
- = Set 24"x5/8" Rebar with plastic cap..



### BASIS OF BEARINGS

THE BASIS OF BEARINGS FOR THIS PLAT IS THE SECTION LINE BETWEEN THE NORTH QUARTER CORNER AND THE NORTHWEST CORNER OF SECTION 29, TOWNSHIP 7 NORTH, RANGE 3 EAST, SALT LAKE BASE AND MERIDIAN, U.S. SURVEY. SHOWN HEREON AS N89°11'07"W.

### NARRATIVE ??

THE PURPOSE OF THIS PLAT IS TO DIVIDE THE BELOW DESCRIBED PROPERTY INTO LOTS AND STREETS AS SHOWN.

FOUND LOT CORNERS STAMPED "4614" DO NOT MATCH THE RECORD DIMENSIONS SHOWN ON THE ORIGINAL SUBDIVISION PLAT. RECORD OF SURVEY NO. 003542 DOES NOT LIST WHAT WAS USED AS A BASIS OF BEARING FOR THE SURVEY. WE LOCATED 2 MONUMENTS AS SHOWN ON THE EVERGREEN PARK NO. 1 SUBDIVISION PLAT AND THEREFORE HAVE MATCHED THE ORIGINAL PLAT SHOWING THE DIFFERENCES IN THE CORNER LOCATIONS.

### BOUNDARY DESCRIPTION

PART OF THE NORTHEAST QUARTER OF SECTION 30, TOWNSHIP 7 NORTH, RANGE 3 EAST, SALT LAKE BASE AND MERIDIAN, U.S. SURVEY, DESCRIBED AS FOLLOWS:

ALL OF LOT 411, 412, AND 413, EVERGREEN PARK SUBDIVISION NO. 1, RECORDED IN THE WEBER COUNTY RECORDERS OFFICE.

CONTAINING 395,715 SQUARE FEET OR 9.084 ACRES

### CURVE TABLE

#	RADIUS	ARC LENGTH	CHD LENGTH	TANGENT	CHD BEARING	DELTA
C1	28.86'	59.94'	49.73'	49.00'	N42°08'21"W	119°00'24"

### SURVEYOR'S CERTIFICATE

I, JERRY FLETCHER, DO HEREBY CERTIFY THAT I AM A REGISTERED PROFESSIONAL LAND SURVEYOR IN THE STATE OF UTAH IN ACCORDANCE WITH TITLE 58, CHAPTER 22, PROFESSIONAL ENGINEERS AND LAND SURVEYORS ACT; AND THAT I HAVE COMPLETED A SURVEY OF THE PROPERTY DESCRIBED ON THIS PLAT IN ACCORDANCE WITH SECTION 17-23-17 AND HAVE VERIFIED ALL MEASUREMENTS, AND HAVE PLACED MONUMENTS AS REPRESENTED ON THIS PLAT, AND THAT THIS PLAT OF EVERGREEN PARK SUBDIVISION 1ST AMENDMENT AMENDING LOTS 411, 412 AND 413 IN WEBER COUNTY, UTAH, HAS BEEN DRAWN CORRECTLY TO THE DESIGNATED SCALE AND IS A TRUE AND CORRECT REPRESENTATION OF THE HEREIN DESCRIBED LANDS INCLUDED IN SAID SUBDIVISION, BASED UPON DATA COMPILED FROM RECORDS IN THE WEBER COUNTY RECORDER'S OFFICE AND FROM SAID SURVEY MADE BY ME ON THE GROUND, I FURTHER CERTIFY THAT THE REQUIREMENTS OF ALL APPLICABLE STATUTES AND ORDINANCES OF WEBER COUNTY CONCERNING ZONING REQUIREMENTS REGARDING LOT MEASUREMENTS HAVE BEEN COMPLIED WITH.

SIGNED THIS \_\_\_\_\_ DAY OF \_\_\_\_\_, 20\_\_\_\_.

6436064  
 UTAH LICENSE NUMBER JERRY FLETCHER

### OWNERS DEDICATION AND CERTIFICATION

WE THE UNDERSIGNED OWNERS OF THE HEREIN DESCRIBED TRACT OF LAND, DO HEREBY SET APART AND SUBDIVIDE THE SAME INTO LOTS AND STREETS (PRIVATE STREETS, PRIVATE RIGHTS-OF-WAY) AS SHOWN ON THE PLAT AND NAME SAID TRACT EVERGREEN PARK SUBDIVISION NO. 1, 1ST AMENDMENT AMENDING LOTS 411, 412, AND 413, AND DO HEREBY DEDICATE TO PUBLIC USE ALL THOSE PARTS OR PORTIONS OF SAID TRACT OF LAND DESIGNATED AS STREETS, THE SAME TO BE USED AS PUBLIC THOROUGHFARES AND ALSO TO GRANT AND DEDICATE A PERPETUAL RIGHT AND EASEMENT OVER, UPON AND UNDER THE LANDS DESIGNATED HEREON AS PUBLIC UTILITY, STORM WATER DETENTION POND, STORM EASEMENTS AND CANAL MAINTENANCE EASEMENT, THE SAME TO BE USED FOR THE INSTALLATION MAINTENANCE AND OPERATION OF PUBLIC UTILITY SERVICE LINE, STORM DRAINAGE FACILITIES, IRRIGATION CANALS OR FOR THE PERPETUAL PRESERVATION OF WATER CHANNELS IN THEIR NATURAL STATE WHICHEVER IS APPLICABLE AS MAY BE AUTHORIZED BY THE GOVERNING AUTHORITY, WITH NO BUILDINGS OR STRUCTURES BEING ERRECTED WITHIN SUCH EASEMENTS.

SIGNED THIS \_\_\_\_\_ DAY OF \_\_\_\_\_, 20\_\_\_\_.

Name \_\_\_\_\_

Name \_\_\_\_\_

### ACKNOWLEDGMENT

STATE OF UTAH )ss.  
 COUNTY OF \_\_\_\_\_ )

ON THE \_\_\_\_\_ DAY OF \_\_\_\_\_, 20\_\_\_\_, PERSONALLY APPEARED BEFORE ME, THE UNDERSIGNED NOTARY PUBLIC, \_\_\_\_\_ (AND) \_\_\_\_\_ SIGNER(S) OF THE ABOVE OWNER'S DEDICATION AND CERTIFICATION, WHO BEING BY ME DULY SWORN, DID ACKNOWLEDGE TO ME \_\_\_\_\_ SIGNED IT FREELY, VOLUNTARILY, AND FOR THE PURPOSES THEREIN MENTIONED.

COMMISSION EXPIRES \_\_\_\_\_ NOTARY PUBLIC

### ACKNOWLEDGMENT

STATE OF UTAH )ss.  
 COUNTY OF \_\_\_\_\_ )

ON THE \_\_\_\_\_ DAY OF \_\_\_\_\_, 20\_\_\_\_, PERSONALLY APPEARED BEFORE ME, THE UNDERSIGNED NOTARY PUBLIC, \_\_\_\_\_ (AND) \_\_\_\_\_ BEING BY ME DULY SWORN, ACKNOWLEDGED TO ME THAT THEY ARE \_\_\_\_\_ OF SAID CORPORATION AND THAT THEY SIGNED THE ABOVE OWNER'S DEDICATION AND CERTIFICATION FREELY, VOLUNTARILY, AND IN BEHALF OF SAID CORPORATION FOR THE PURPOSES THEREIN MENTIONED.

COMMISSION EXPIRES \_\_\_\_\_ NOTARY PUBLIC

**Project Info.**

Surveyor: J. FLETCHER

Designer: N. ANDERSON

Begin Date: AUGUST 5, 2013

Name: EVERGREEN PARK SUBD  
 1ST AMD LOTS 411-413

Number: 6211-02

Revision: \_\_\_\_\_

Scale: 1"=60'

Checked: \_\_\_\_\_

920 CHAMBERS STREET, SUITE 14, OGDEN, UTAH 84403  
 TEL: (801) 621-3100 FAX: (801) 621-2666 www.reeve-assoc.com

**WEBER COUNTY PLANNING COMMISSION APPROVAL**

THIS IS TO CERTIFY THAT THIS SUBDIVISION PLAT WAS DULY APPROVED BY THE WEBER COUNTY PLANNING COMMISSION. SIGNED THIS \_\_\_\_\_ DAY OF \_\_\_\_\_, 20\_\_\_\_.

CHAIRMAN, WEBER COUNTY PLANNING COMMISSION

**WEBER COUNTY ENGINEER**

I HEREBY CERTIFY THAT THE REQUIRED PUBLIC IMPROVEMENT STANDARDS AND DRAWINGS FOR THIS SUBDIVISION CONFORM WITH THE COUNTY STANDARDS AND THE AMOUNT OF THE FINANCIAL GUARANTEE IS SUFFICIENT FOR THE INSTALLATION OF THESE IMPROVEMENTS.

WEBER COUNTY ENGINEER

**WEBER COUNTY COMMISSION ACCEPTANCE**

THIS IS TO CERTIFY THAT THIS SUBDIVISION PLAT, THE DEDICATION OF STREETS AND OTHER PUBLIC WORKS AND FINANCIAL GUARANTEE OF PUBLIC IMPROVEMENTS ASSOCIATED WITH THIS SUBDIVISION, THEREON ARE HEREBY APPROVED AND ACCEPTED BY THE COMMISSIONERS OF WEBER COUNTY, UTAH.

SIGNED THIS \_\_\_\_\_ DAY OF \_\_\_\_\_, 20\_\_\_\_.

CHAIRMAN, WEBER COUNTY COMMISSION

ATTEST

**WEBER COUNTY SURVEYOR**

I HEREBY CERTIFY THAT THE WEBER COUNTY SURVEYOR'S OFFICE HAS REVIEWED THIS PLAT FOR MATHEMATICAL CORRECTNESS, SECTION CORNER DATA, AND FOR HARMONY WITH LINES AND MONUMENTS ON RECORD IN COUNTY OFFICES. THE APPROVAL OF THIS PLAT BY THE WEBER COUNTY SURVEYOR DOES NOT RELIEVE THE LICENSED LAND SURVEYOR WHO EXECUTED THIS PLAT FROM THE RESPONSIBILITIES AND/OR LIABILITIES ASSOCIATED THEREWITH.

SIGNED THIS \_\_\_\_\_ DAY OF \_\_\_\_\_, 20\_\_\_\_.

WEBER COUNTY SURVEYOR

**WEBER COUNTY ATTORNEY**

I HAVE EXAMINED THE FINANCIAL GUARANTEE AND OTHER DOCUMENTS ASSOCIATED WITH THIS SUBDIVISION PLAT, AND IN MY OPINION THEY CONFORM WITH THE COUNTY ORDINANCE APPLICABLE THERETO AND NOW IN FORCE AND AFFECT.

SIGNED THIS \_\_\_\_\_ DAY OF \_\_\_\_\_, 20\_\_\_\_.

WEBER COUNTY ATTORNEY

**WEBER-MORGAN HEALTH DEPARTMENT**

I HEREBY CERTIFY THAT THE SOILS, PERCOLATION RATES, AND SITE CONDITIONS FOR THIS SUBDIVISION HAVE BEEN INVESTIGATED BY THIS OFFICE AND ARE APPROVED FOR ON-SITE WASTEWATER DISPOSAL SYSTEMS.

SIGNED THIS \_\_\_\_\_ DAY OF \_\_\_\_\_, 20\_\_\_\_.

WEBER-MORGAN HEALTH DEPARTMENT

**Weber County Recorder**

Entry No. \_\_\_\_\_ Fee Paid \_\_\_\_\_

And Recorded, \_\_\_\_\_

At \_\_\_\_\_ in Book \_\_\_\_\_

Of The Official Records, Page \_\_\_\_\_

Recorded For: \_\_\_\_\_

Weber County Recorder \_\_\_\_\_ Deputy.