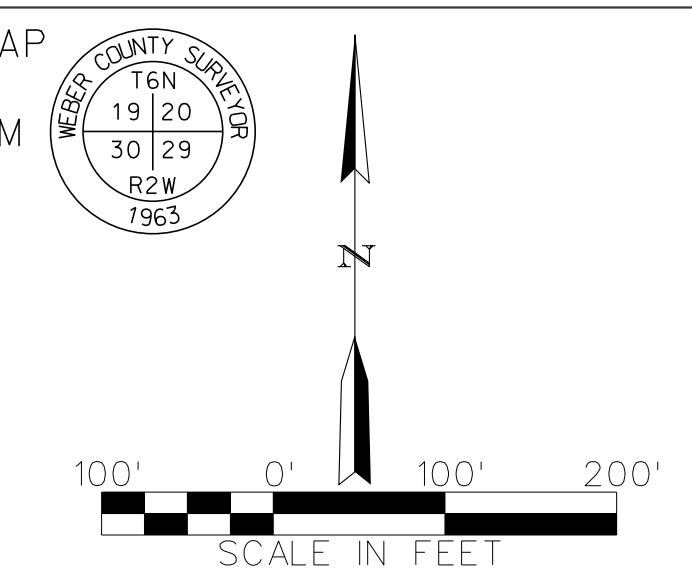


LEGEND

- Fence
- Water Line
- Irrigation Device
- Found Rebar & Cap
- Pipe
- Found Nail & Washer
- Property Line
- Power Pole
- Sign
- Teledod
- Water Manhole
- Gate Post
- Easement Line
- PROPERTY LINE
- SET REBAR & CAP
- LABELED "ESI ENGINEERING"

S88°28'E 664.00'

NOTE:
ALL GREENHOUSE AREA IS INTERNAL IRRIGATED.
WATER IS CONTAINED AND RUNS TO DETENTION BASIN.



N74°09'35"E
35.44'
COTTLE
SUBDIVISION

FOUND BRASS CAP
NE COR SEC 30
T6N R2W, SLB&M
S00°41'31"W
623.29'
N89°25'52"W
66.00'

S00°41'31"W
52.24'

NEW 2" WATER METER
TO TIE INTO EX. WATERLINE
PROP ENT/EXIT

N00°41'31"E
274.27'

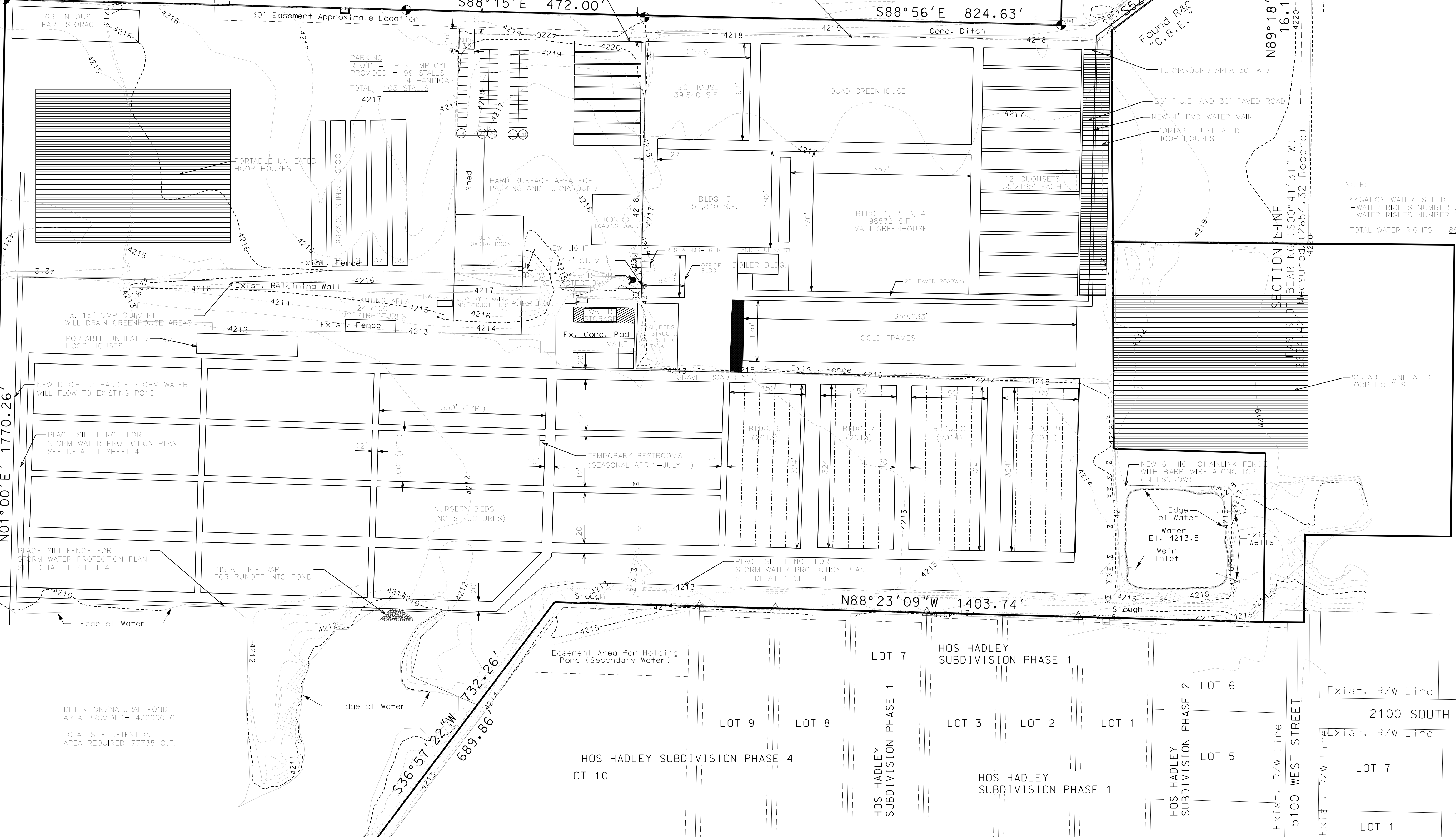
S89°25'52"E
394.62'

N89°18'29"W
16.19'

S88°15'E 472.00'

S88°56'E 824.63'

N01°00'E 1770.26'



NOTE:
IRRIGATION WATER IS FED FROM THREE EXISTING WELLS.
- WATER RIGHTS NUMBER 35-1267 70 AC SOLE SUPPLY (TWO WELLS).
- WATER RIGHTS NUMBER 35-2562 15 AC SOLE SUPPLY.
TOTAL WATER RIGHTS = 85 AC FT OF WATER

DETENTION/NATURAL POND
AREA PROVIDED= 400000 C.F.
TOTAL SITE DETENTION
AREA REQUIRED=77735 C.F.

Easement Area for Holding
Pond (Secondary Water)

LOT 7
HOS HADLEY
SUBDIVISION PHASE 1

LOT 9 LOT 8
HOS HADLEY
SUBDIVISION PHASE 4

LOT 3 LOT 2 LOT 1
HOS HADLEY
SUBDIVISION PHASE 1

LOT 5
HOS HADLEY
SUBDIVISION PHASE 2

LOT 6
HOS HADLEY
SUBDIVISION PHASE 1

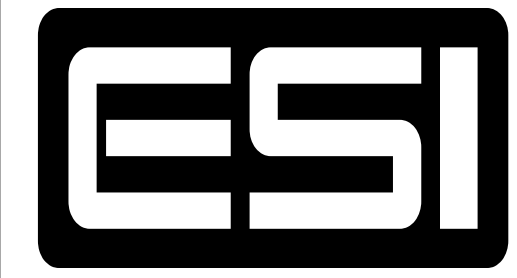
LOT 7 LOT 6
HOS HADLEY
SUBDIVISION PHASE 1

LOT 1
HOS HADLEY
SUBDIVISION PHASE 1

REVISION	DATE	BY	DESCRIPTION	DESIGN
				BFC
				BFC
				FTC

SITE GRADING AND DRAINAGE PLAN

PINEAE GREENHOUSES
NEW SITE IN OGDEN, UTAH



ESI ENGINEERING
CONSULTING ENGINEERS AND LAND SURVEYORS
3500 SOUTH MAIN STREET SUITE 206
SALT LAKE CITY, UTAH 84115
TEL: (801)263-1752

SHEET OF 2 5
PROJECT NO. 05-008