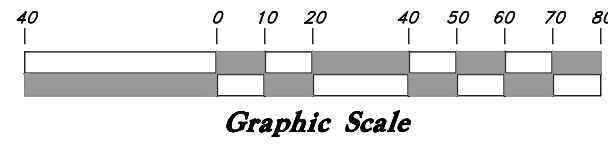


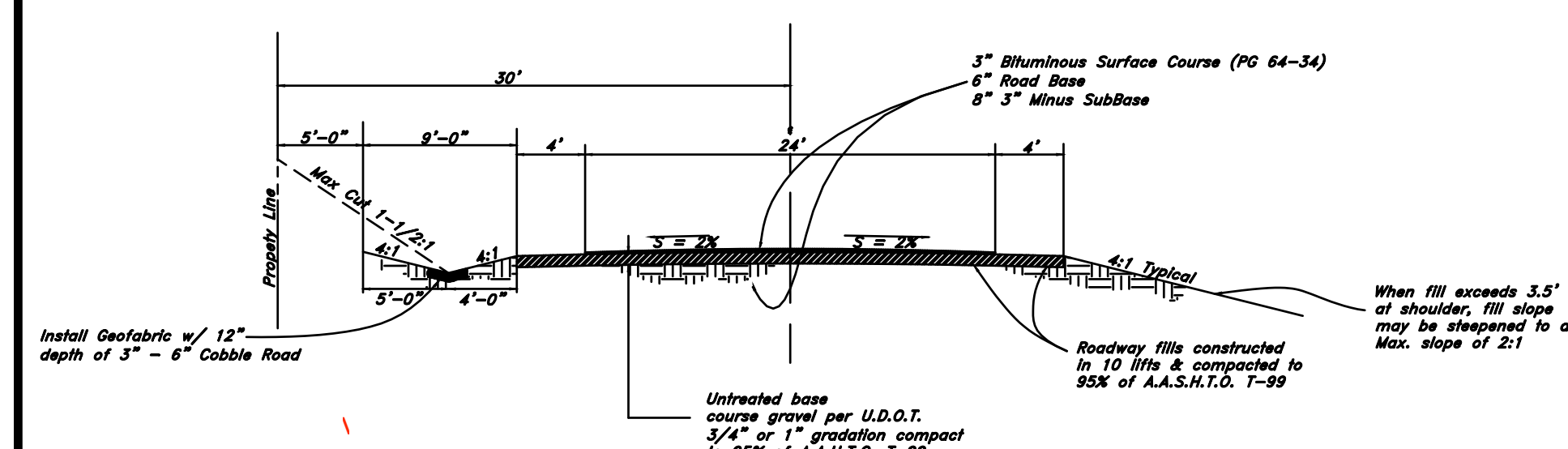
Scale:  
1" = 40' Horiz.  
1" = 4' Vertical



### Legend

(Note: All items may not appear on drawing)

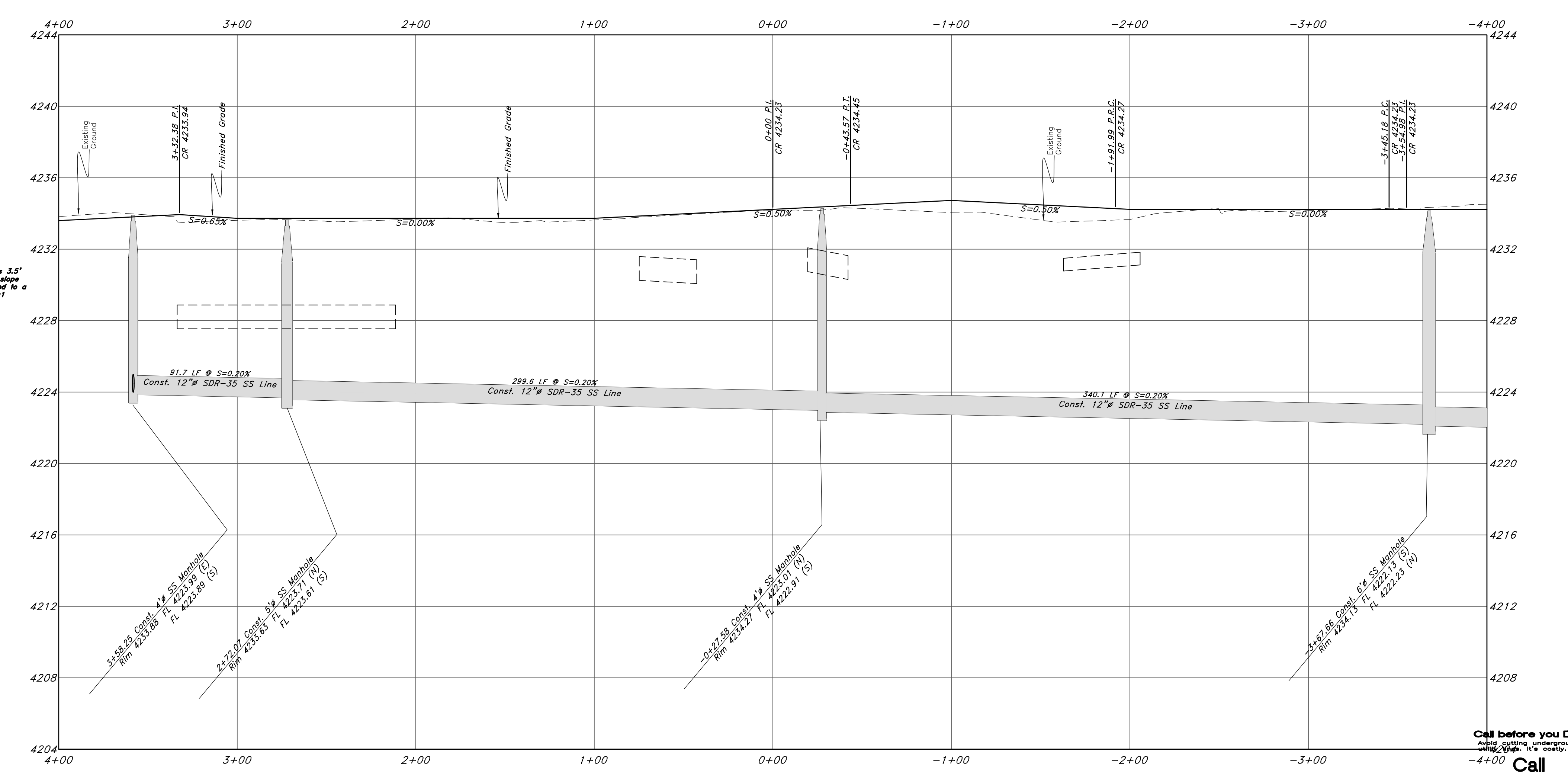
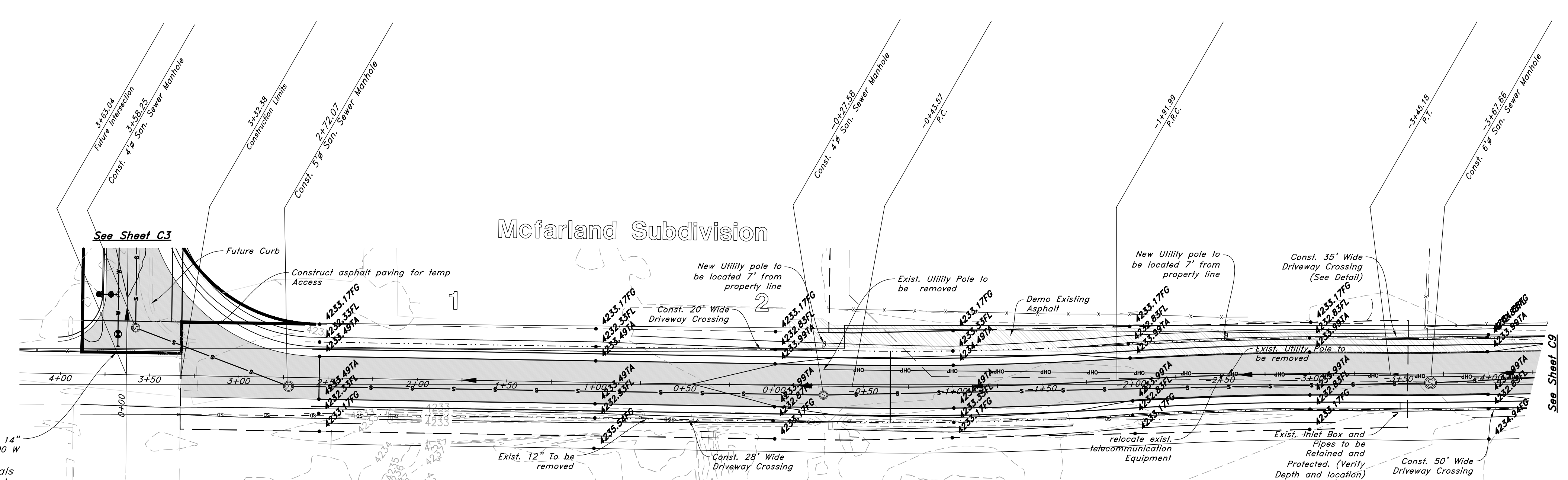
- San. Sewer Manhole
- Water Manhole
- Storm Drain Manhole
- Cleanout
- Electrical Manhole
- Catch Basins
- Exist. Fire Hydrant
- Exist. Water Valve
- Water Valve
- Sanitary Sewer
- Culinary Water
- Gas Line
- Irrigation Line
- Storm Drain
- Telephone Line
- Secondary Waterline
- Power Line
- Fire Line
- Land Drain
- Power pole
- Power pole w/guy
- Light Pole
- Fence
- Flowline of ditch
- Overhead Power line
- Corrugated Metal Pipe
- Concrete Pipe
- Reinforced Concrete Pipe
- Ductile Iron
- PVC
- Top of Asphalt
- Edge of Asphalt
- Centerline
- Flowline
- Finish Floor
- Top of Curb
- Top of Wall
- Top of Walk
- Top of Concrete
- Natural Ground
- Finish Grade
- Match, Existing
- Fire Department Connection
- Finish Contour
- Exist. Contour
- Finish Grade
- Exist. Grade
- Ridge Line
- Existing Asphalt
- New Asphalt
- Heavy Duty Asphalt
- Existing Concrete
- New Concrete
- Spill Curb & Gutter
- Existing Gravel



### Standard Rural Roadway Section

Not to Scale

NOTES:  
1. All sewer mains and laterals crossing under culinary water with less than 18" of clearance shall be sleeved per TWW standard drawings



**GREAT BASIN ENGINEERING**

574 SOUTH 1475 EAST, SUITE 100, OGDEN, UTAH 84403  
 WWW.GREATBASINENGINEERING.COM

**Plan & Profile**

**Terakee Farm PRUD No. 1**

Approximately 1000 North 3600 West  
 Weber County, Utah

A part of Section 9, T6N, R2W, SLB&M, U.S. Survey

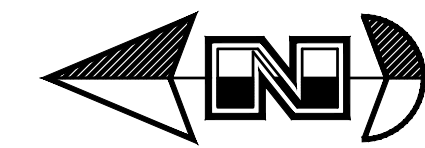
June 2022

SHEET NO. **C8** of 11

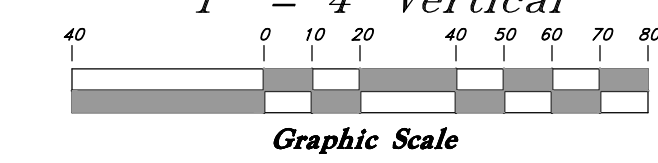
16N704 - AM-1

CONSTRUCTION SITE





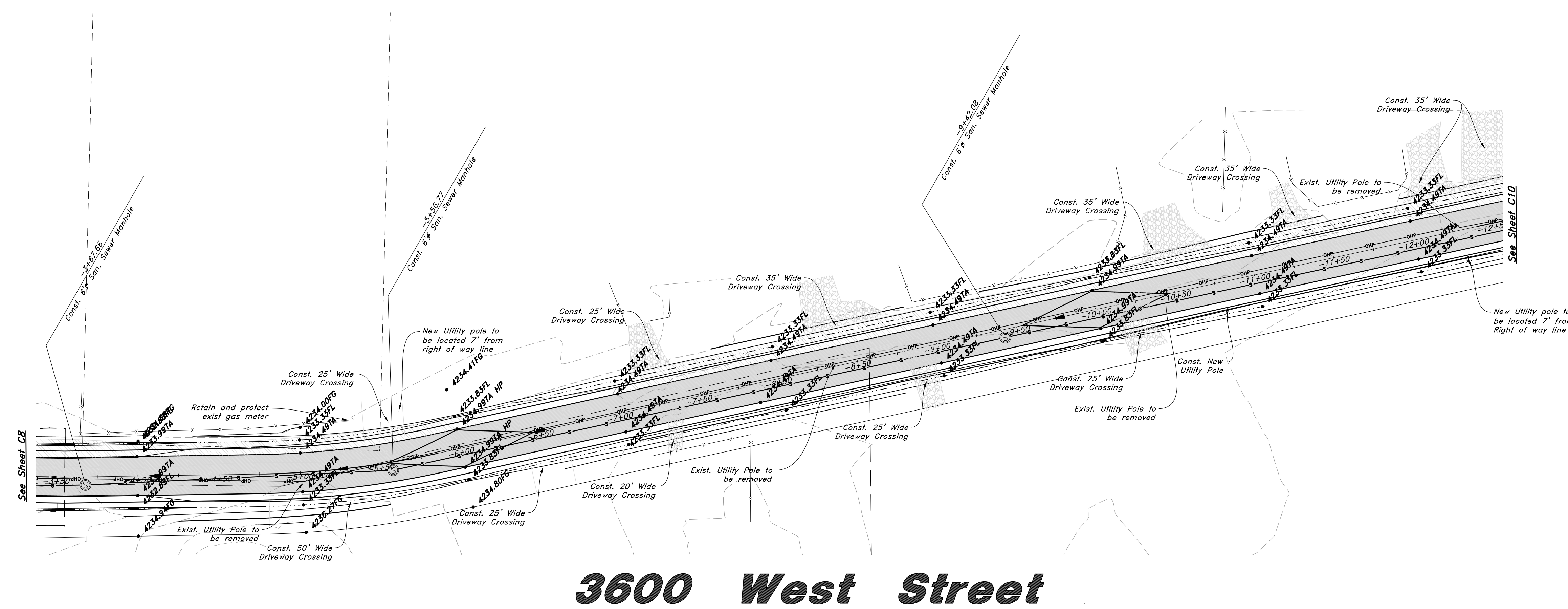
Scale:  
1" = 40' Horiz.  
1" = 4' Vertical



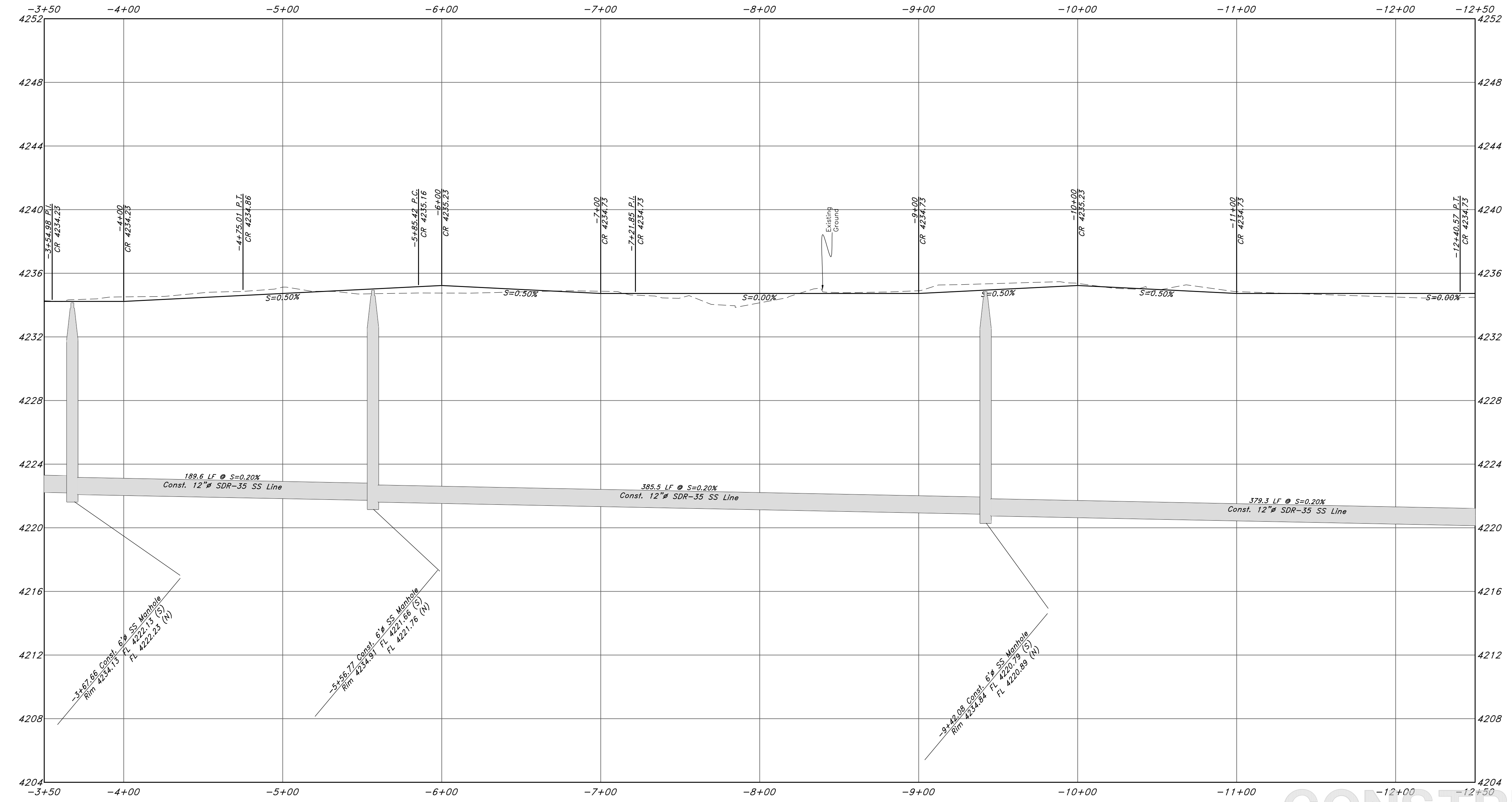
### Legend

(Note: All items may not appear on drawing)

- San. Sewer Manhole
- Water Manhole
- Storm Drain Manhole
- Cleanout
- Electrical Manhole
- Catch Basins
- Exist. Fire Hydrant
- Fire Hydrant
- Exist. Water Valve
- Water Valve
- Sanitary Sewer
- Culinary Water
- Gas Line
- Irrigation Line
- Storm Drain
- Telephone Line
- Secondary Waterline
- Power Line
- Fire Line
- Land Drain
- Power pole
- Power pole w/guy
- Light Pole
- Fence
- Flowline of ditch
- Overhead Power line
- Corrugated Metal Pipe
- Concrete Pipe
- Reinforced Concrete Pipe
- Ductile Iron
- Polyvinyl Chloride
- Top of Asphalt
- Edge of Asphalt
- Centerline
- Flowline
- Finish Floor
- Top of Curb
- Top of Wall
- Top of Walk
- Top of Concrete
- Natural Ground
- Finish Grade
- Match Existing
- Fire Department Connection
- Finish Contour
- Exist. Contour
- Finish Grade
- Exist. Grade
- Ridge Line



# 3600 West Street



| REV | DATE       | DESCRIPTION                      |
|-----|------------|----------------------------------|
| 01  | 06-02-2022 | Don White Utility Water Comments |

**GREAT BASIN ENGINEERING**

574 BOUTH 1475 EAST BODEN, UTAH 84403  
 435 S. 1000 W. SUITE 100, P.O. BOX 1227, FAIRMOUNT, UTAH 84403  
 WWW.GREATBASINENGINEERING.COM

**Plan & Profile**

**Terakee Farm PRUD No. 1**  
 Approximately 1000 North 3600 West  
 Weber County, Utah  
 A part of Section 9, T6N, R2W, SLB&M, U.S. Survey

June 2022

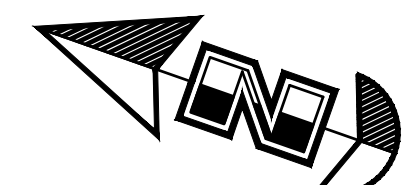
SHEET NO. **C9** of 11

16N704 - AM-1

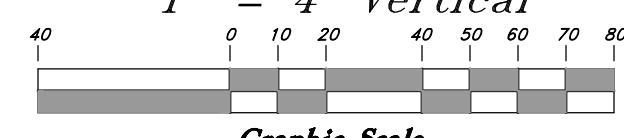
CONSTRUCTION SITE







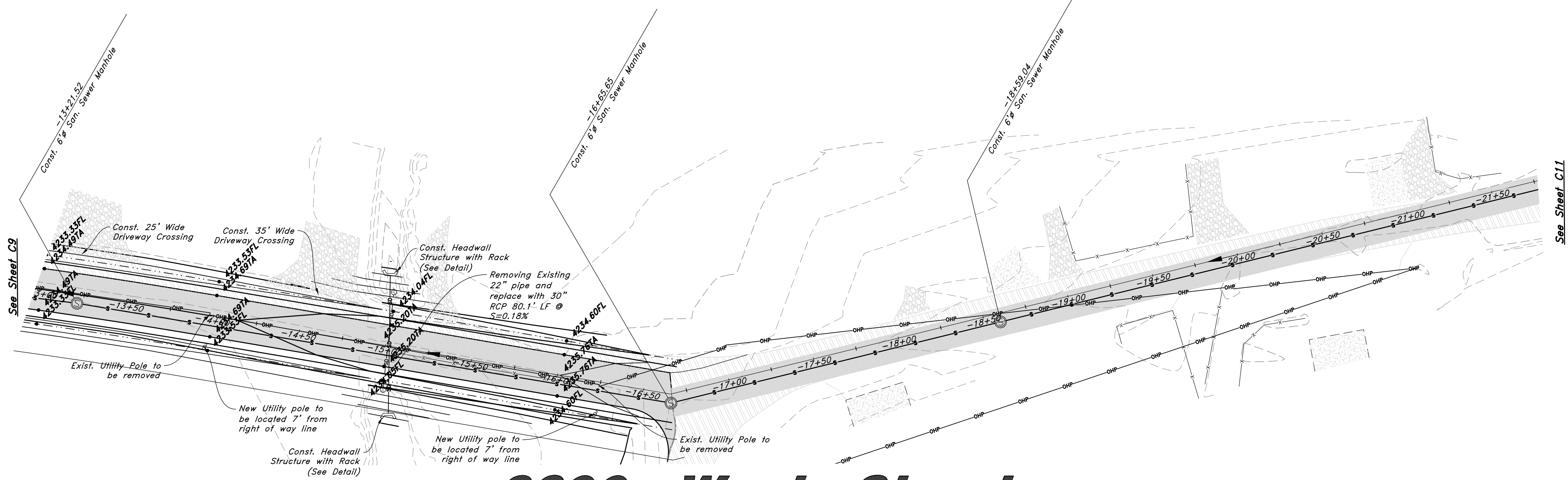
Scale:  
1" = 40' Horiz.  
1" = 4' Vertical



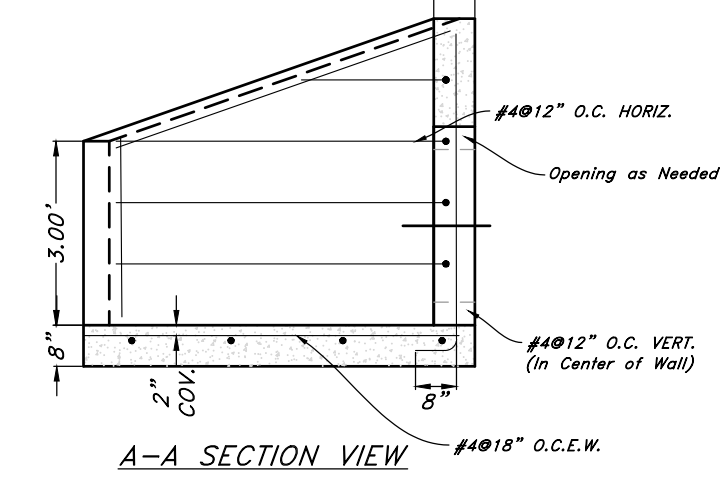
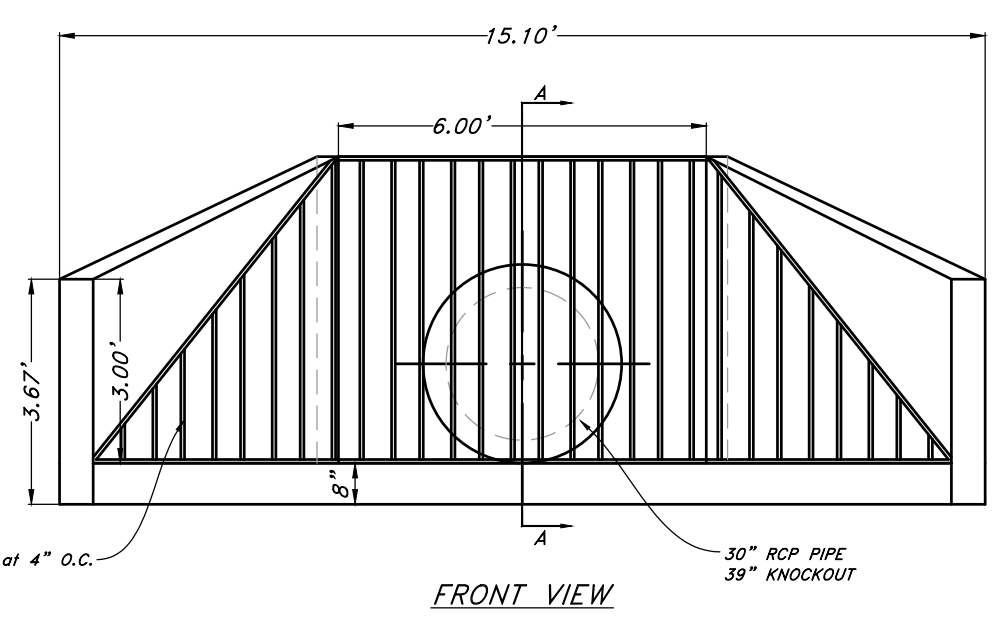
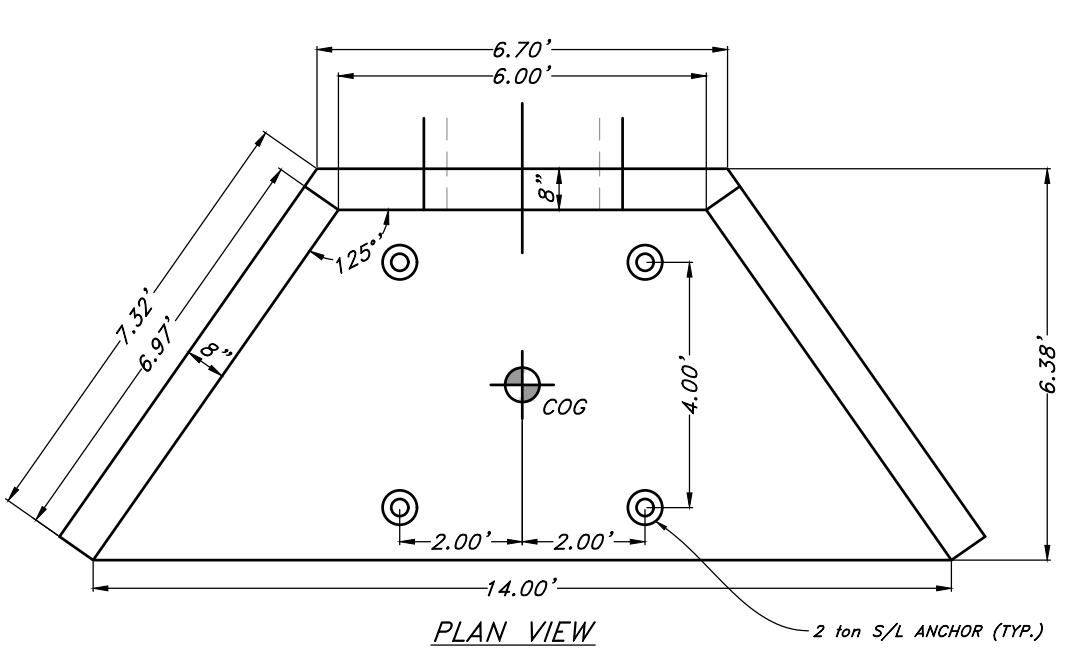
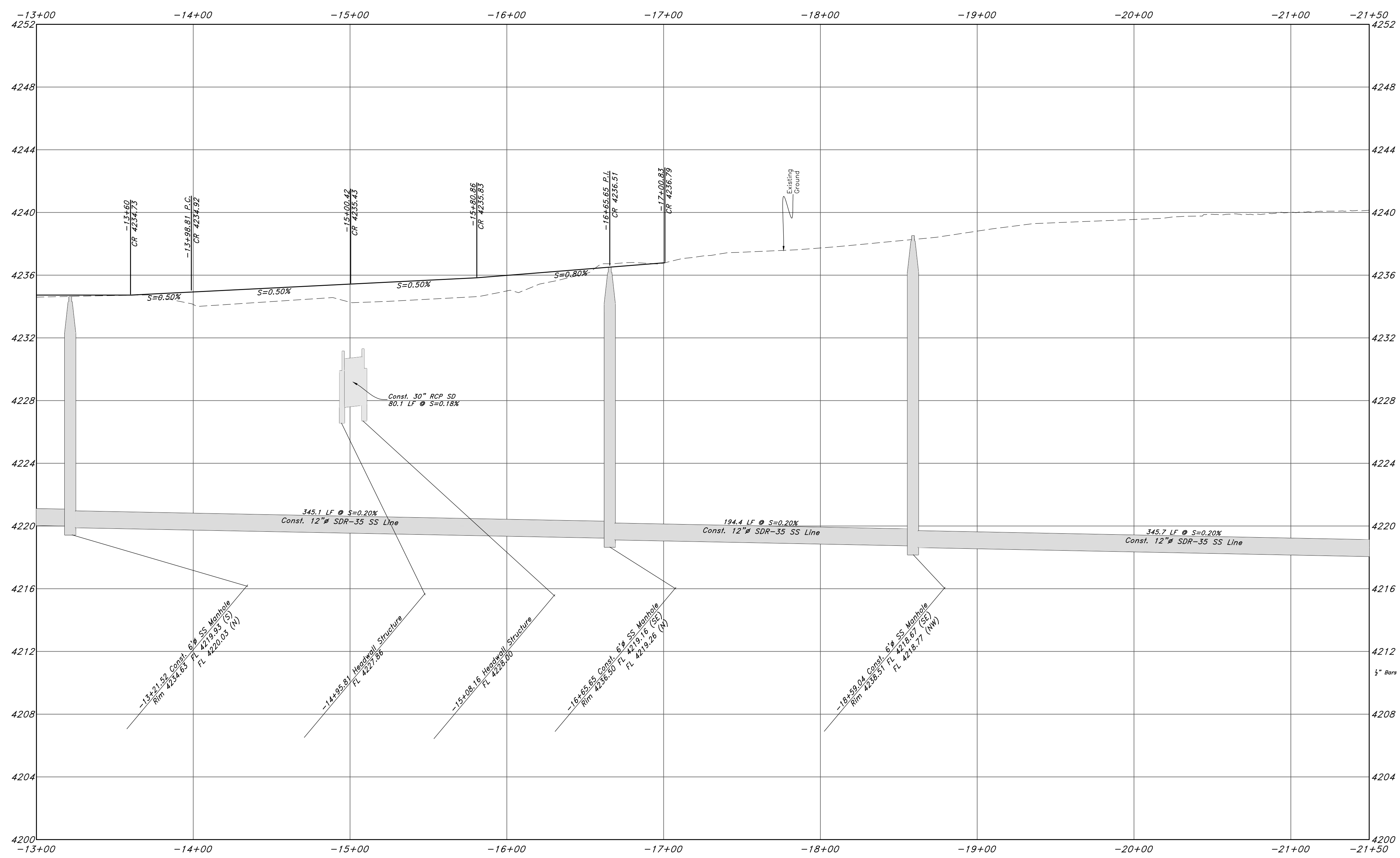
### Legend

(Note: All items may not appear on drawing)

- San. Sewer Manhole
- Water Manhole
- Storm Drain Manhole
- Cleanout
- Electrical Manhole
- Catch Basins
- Exist. Fire Hydrant
- Fire Hydrant
- Exist. Water Valve
- Water Valve
- Sanitary Sewer
- Culinary Water
- Gas Line
- Irrigation Line
- Storm Drain
- Telephone Line
- Secondary Waterline
- Power Line
- Fire Line
- Land Drain
- Power pole
- Power pole w/guy
- Light Pole
- Fence
- Flowline of ditch
- Overhead Power line
- Corrugated Metal Pipe
- Concrete Pipe
- Reinforced Concrete Pipe
- Ductile Iron
- Polyvinyl Chloride
- Top of Asphalt
- Edge of Asphalt
- Centerline
- Flowline
- Finish Floor
- Top of Curb
- Top of Wall
- Top of Walk
- Top of Concrete
- Natural Ground
- Finish Grade
- Match Existing
- Fire Department Connection
- Finish Contour
- Exist. Contour
- Finish Grade
- Exist. Grade
- Ridge Line



## 3600 West Street



HEADWALL STRUCTURE WITH TRASHRACK

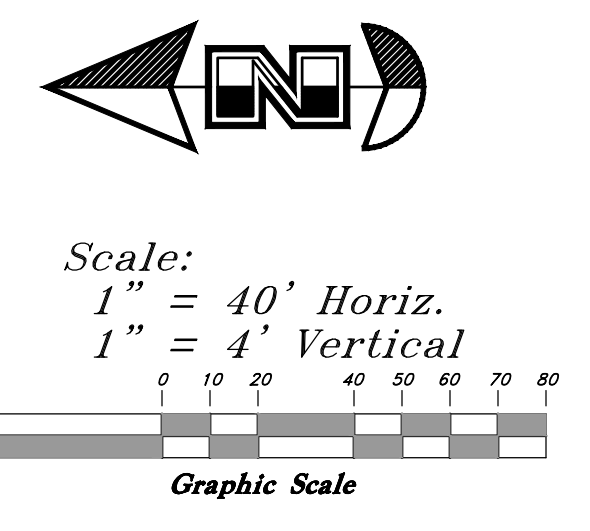
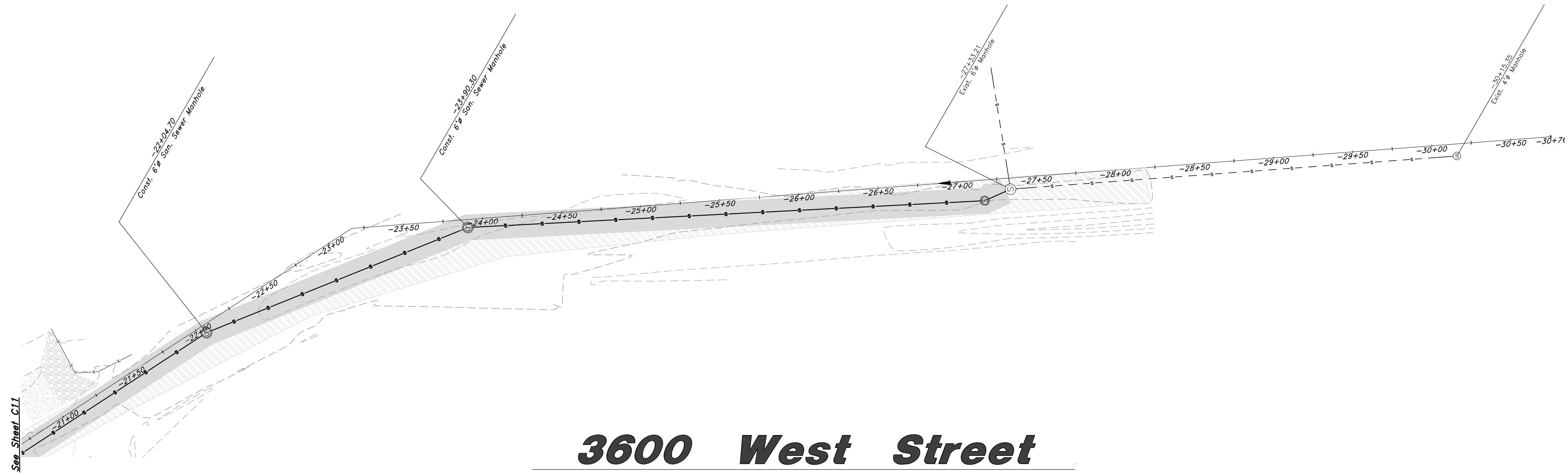
**GREAT BASIN ENGINEERING**  
 574 SOUTH 1475 EAST, SUITE 100, OGDEN, UTAH 84403  
 WWW.GREATBASINENGINEERING.COM

**Plan & Profile**  
**Terakee Farm PRUD No. 1**  
 Approximately 1000 North 3600 West  
 Weber County, Utah  
 A part of Section 9, T6N, R2W, SLB&M, U.S. Survey

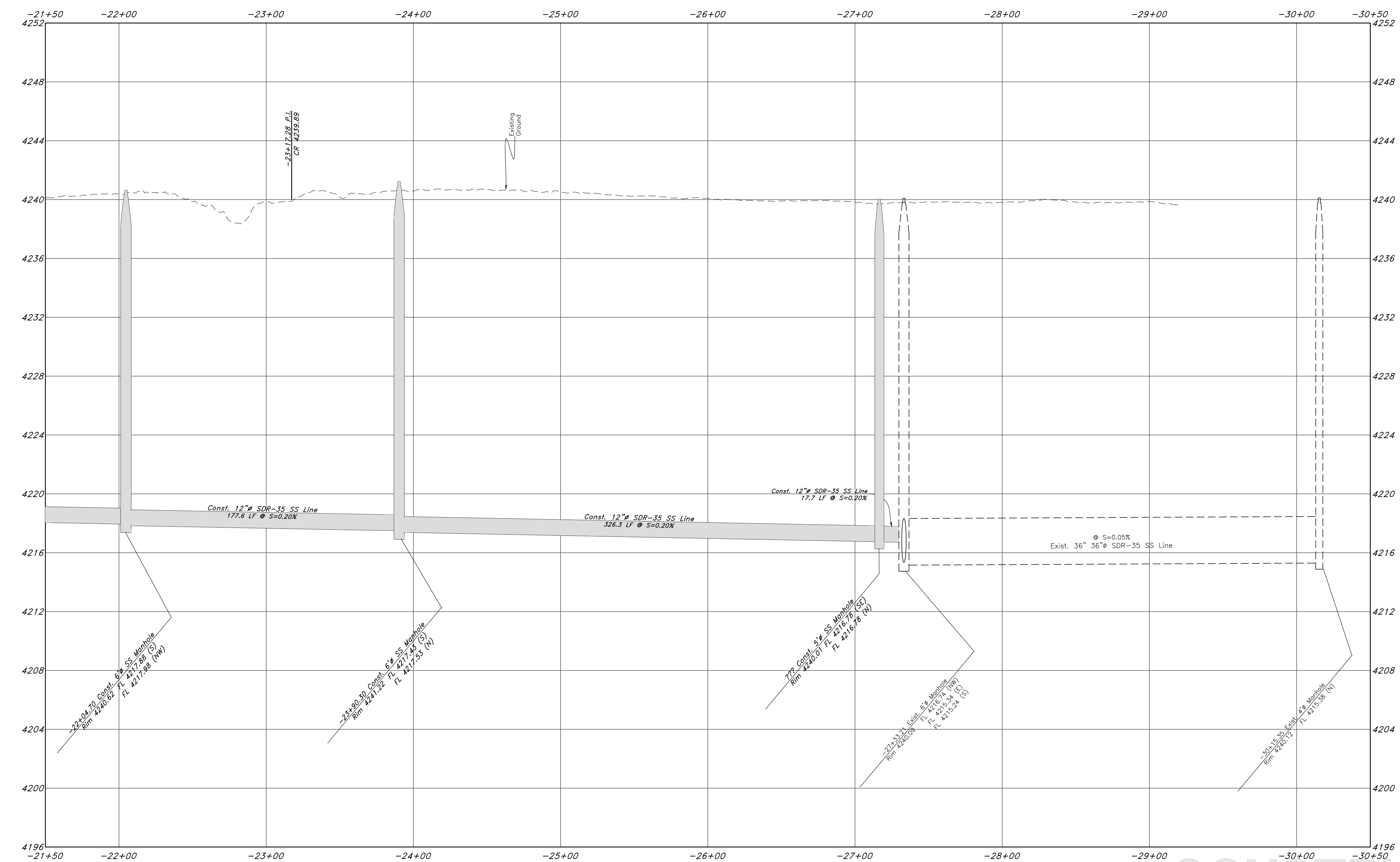
June 2022  
 SHEET NO.  
**C10**  
 of 11  
 16N704 - AM-1

CONSTRUCTION SERVICES  
 Call before you Dig  
 Avoid cutting underground utility lines. It's safety.  
 Call 811  
 1-800-662-4111





# 3600 West Street



| REV        | DATE       | DESCRIPTION                      |
|------------|------------|----------------------------------|
| 06-02-2022 | 06-02-2022 | Don White Utility Water Comments |

**GREAT BASIN ENGINEERING**

574 SOUTH 1475 EAST, BOONVILLE, UTAH 84403  
 435 S. 1000 W., SUITE 100, BOONVILLE, UTAH 84403  
 WWW.GREATBASINENGINEERING.COM

**Plan & Profile**

**Terakee Farm PRUD No. 1**

Approximately 1000 North 3600 West  
 Weber County, Utah  
 A part of Section 9, T6N, R2W, SLB&M, U.S. Survey



W:\16N704 - Terakee\DWG\16N704 - AM.dwg, 6/23/2022 10:15:50 AM, Kortneyg, 1:1