

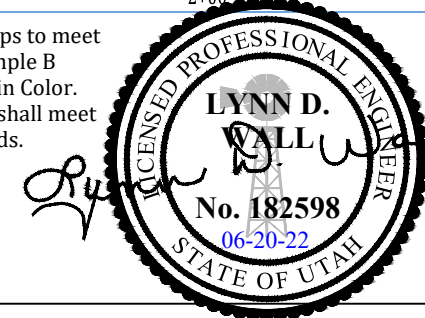
**CONSTRUCTION NOTES:**

- Construct 1" copper water lateral and meter box (typical).
- Install 4" pvc sanitary sewer lateral (typical) sl=2% minimum.

- Install double service meter (typical). Install 1-1/2" CTS poly secondary water lateral.
- Install service meter (typical). Install 1-1/2" CTS poly secondary water lateral.

- Install 6" pvc Class 150 land drain lateral sl=1% minimum.
- The land drain pipe must be perforated pvc wrapped with 1" clean gravel and fabric liner on all 4 sides of gravel (includes all 6" laterals).

- All handicap ramps to meet APWA Plan 235.1 Example B Truncated Dome Gray in Color.
- All fire hydrants shall meet Water District Standards.



Approved for Construction  
Weber County Engineer  
Date: \_\_\_\_\_

Developer:  
Pat Burns  
Lync Construction  
801-710-2234

The Geotechnical Report provided by: CMT Engineering Laboratories (Project No. 10878, Dated March 7, 2018) has critical information in regards to this project and must be followed.

Project: **IMPROVEMENTS STAGECOACH ESTATES WEBER COUNTY, UTAH**

Title: **SANITARY SEWER CONNECTION PLAN & PROFILE: STA 0+00 - 3+50**

Date: 20 JUNE 2022

Sheet 10.0

Prepared By: **Summers Engineering Collective**  
- Jen Summers -  
Summers.eng.collective@gmail.com

#	Date:	Revision: