

Construction Notes:

- 1) ALL CONSTRUCTION IS TO CONFORM TO THE STANDARD DRAWINGS AND SPECIFICATIONS OF WEBER COUNTY.
 - 2) CONSTRUCT HANDICAP RAMP PER ADA AND CITY REQUIREMENTS.
- CULINARY WATER**
W/8 - 8" PVC C-900 CLASS 200 WATER
- SANITARY SEWER**
SS/8 - 8" ASTM D3034 SDR 35 SEWER
SS/12 - 12" ASTM D3034 SDR 35 SEWER

DUE TO THE SHALLOWNESS OF THE SEWER LINE THROUGH ADJACENT FIELD, CLASS I OR CLASS II PIPE EMBEDMENT (PER ASTM D2487) INSTALLED PER ASTM D 2321 WITH 95% MODIFIED PROCTOR.

STORM DRAIN
SD/15 - 15" RCP STORM DRAIN

SECONDARY WATER
SW/8 - 8" PVC C-900 SECONDARY WATER LINE

Canal Crossing Notes

- 1) ANY CROSSING OF THE HOOPER IRR. CANALS MUST OBTAIN A LICENSE AGREEMENT.
- 2) A CHAIN LINK FENCE MUST BE INSTALLED AT 12" FROM HIGH BANK ON THE OFF ROAD SIDE AND 22" ON ROAD SIDE. THE PROPERTY IS ON THE OFF ROAD SIDE, BUT MUST FENCE THE ENTIRE EASEMENT THROUGH THE PROPERTY.
- 3) THE SEWER LINE MUST BE INSTALLED IN AN 18" STEEL CASING EXTENDING 4'-0" BEYOND HIGH BANK BOTH SIDES OF THE CANAL ACCORDING TO HOOPER IRR. COMPANY STANDARD DETAILS.
- 4) NO DRAINAGE FROM THE DEVELOPMENT IS ALLOWED INTO THE CANAL SYSTEM.
- 5) ALL CONSTRUCTION TO BE DONE IN ACCORDANCE WITH HOOPER IRR. COMPANY STANDARDS.

Reeve & Associates, Inc.
 920 CHAMBERS STREET #14, OGDEN, UTAH 84403
 TEL: (801) 621-3100 FAX: (801) 621-2665 www.reeve-inc.com
 LAND PLANNERS • CIVIL ENGINEERS • LAND SURVEYORS
 TRAFFIC ENGINEERS • STRUCTURAL ENGINEERS • LANDSCAPE ARCHITECTS



DATE	DESCRIPTION
5-2-14	RH County Comments
9-4-14	ST County Comments
9-30-14	ST County Comments
10-9-14	ST County Comments
11-3-14	RH Sewer Revisions
11-24-14	ST HIC Comments

Mallard Springs Subdivision
 WEBER COUNTY, UTAH
4000 West Street
18+32.19 - 21+00.00

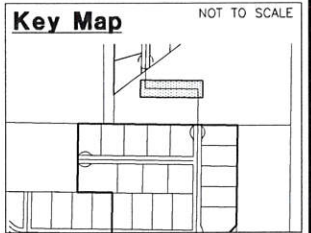
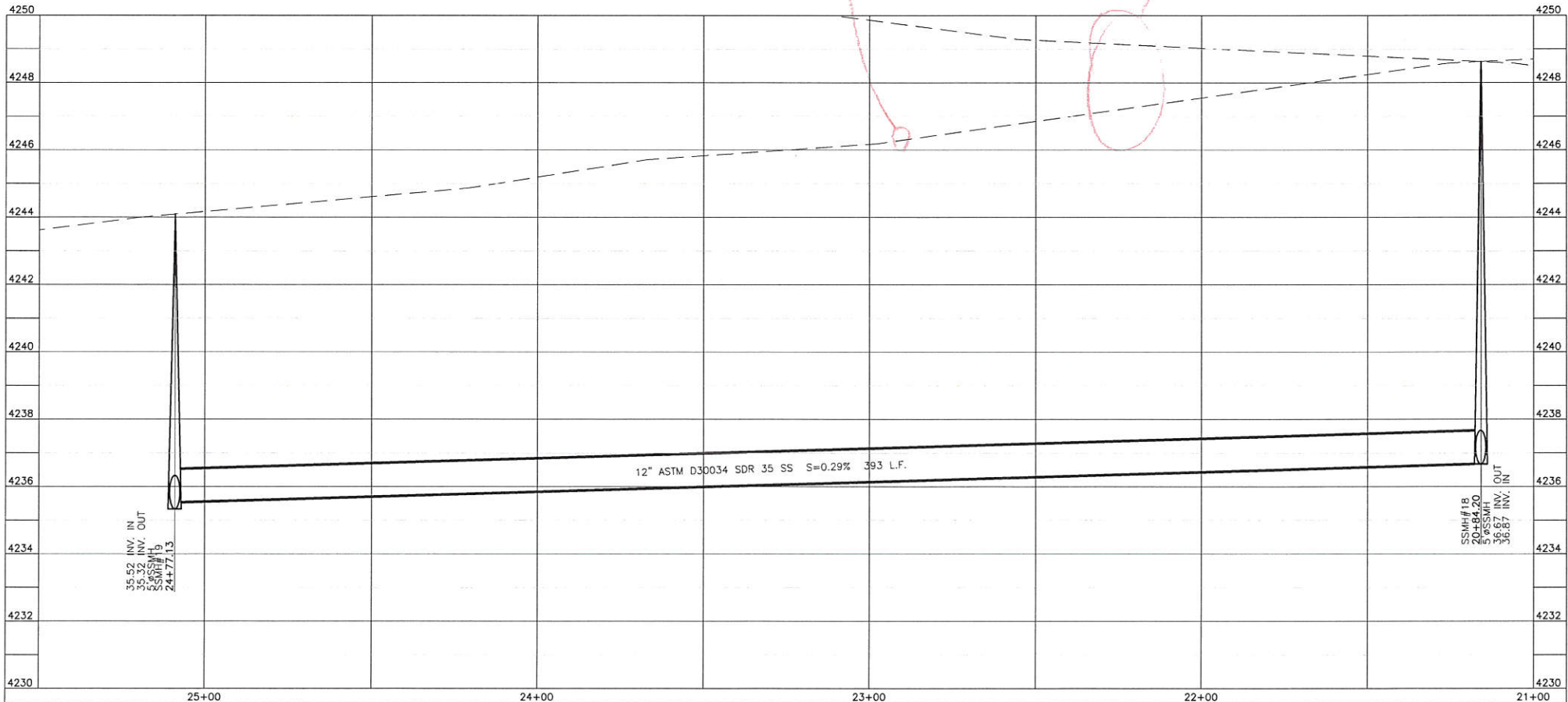
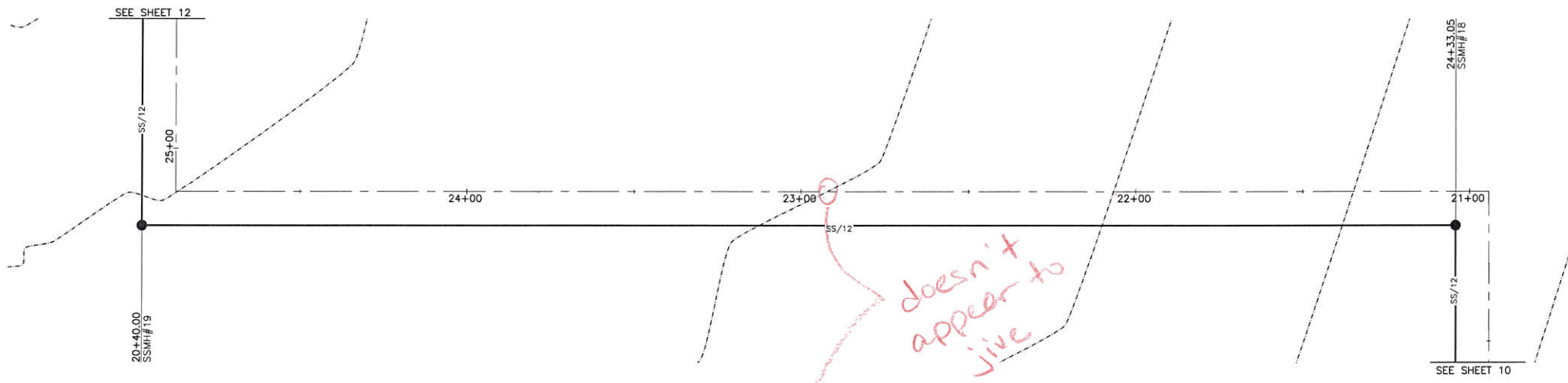


Revised: 11-3-14

Project Info.
 Engineer: J. NATE REEVE, P.E.
 Drafter: R. HANSEN
 Begin Date: NOVEMBER 4, 2013
 Name: MALLARD SPRINGS SUBDIVISION
 Number: 3442-A30

Sheet **15**
10 Sheets

Blue Stakes Location Center
Call: Toll Free 1-800-662-4111
 Two Working Days Before You Dig



Construction Notes:

- 1) ALL CONSTRUCTION IS TO CONFORM TO THE STANDARD DRAWINGS AND SPECIFICATIONS OF WEBER COUNTY.
- 2) CONSTRUCT HANDICAP RAMP PER ADA AND CITY REQUIREMENTS.

CULINARY WATER

W/8 - 8" PVC C-900 CLASS 200 WATER

SANITARY SEWER

SS/8 - 8" ASTM D3034 SDR 35 SEWER
 SS/12 - 12" ASTM D3034 SDR 35 SEWER

DUE TO THE SHALLOWNESS OF THE SEWER LINE THROUGH ADJACENT FIELD, CLASS I OR CLASS II PIPE EMBEDMENT (PER ASTM D2487) INSTALLED PER ASTM D 2321 WITH 95% MODIFIED PROCTOR.

STORM DRAIN

SD/15 - 15" RCP STORM DRAIN

SECONDARY WATER

SW/8 - 8" PVC C-900 SECONDARY WATER LINE

Canal Crossing Notes

- 1) ANY CROSSING OF THE HOOPER IRR. CANALS MUST OBTAIN A LICENSE AGREEMENT.
- 2) A CHAIN LINK FENCE MUST BE INSTALLED AT 12' FROM HIGH BANK ON THE OFF ROAD SIDE AND 22' ON ROAD SIDE. THE PROPERTY IS ON THE OFF ROAD SIDE, BUT MUST FENCE THE ENTIRE EASEMENT THROUGH THE PROPERTY.
- 3) THE SEWER LINE MUST BE INSTALLED IN AN 18" STEEL CASING EXTENDING 4'-0" BEYOND HIGH BANK BOTH SIDES OF THE CANAL ACCORDING TO HOOPER IRR. COMPANY STANDARD DETAILS.
- 4) NO DRAINAGE FROM THE DEVELOPMENT IS ALLOWED INTO THE CANAL SYSTEM.
- 5) ALL CONSTRUCTION TO BE DONE IN ACCORDANCE WITH HOOPER IRR. COMPANY STANDARDS.

Reeve & Associates, Inc.
 920 CHAMBERS STREET, SUITE 114, OGDEN, UTAH 84403
 TEL: (801) 466-8800 FAX: (801) 466-8801
 WWW.REEVE-ASSOCIATES.COM
 CIVIL ENGINEERS • STRUCTURAL ENGINEERS • LANDSCAPE ARCHITECTS

DATE	DESCRIPTION
5-2-14	RH County Comments
9-4-14	ST County Comments
9-30-14	ST County Comments
10-9-14	ST County Comments
11-3-14	RH Sewer Revisions
11-24-14	ST HIC Comments

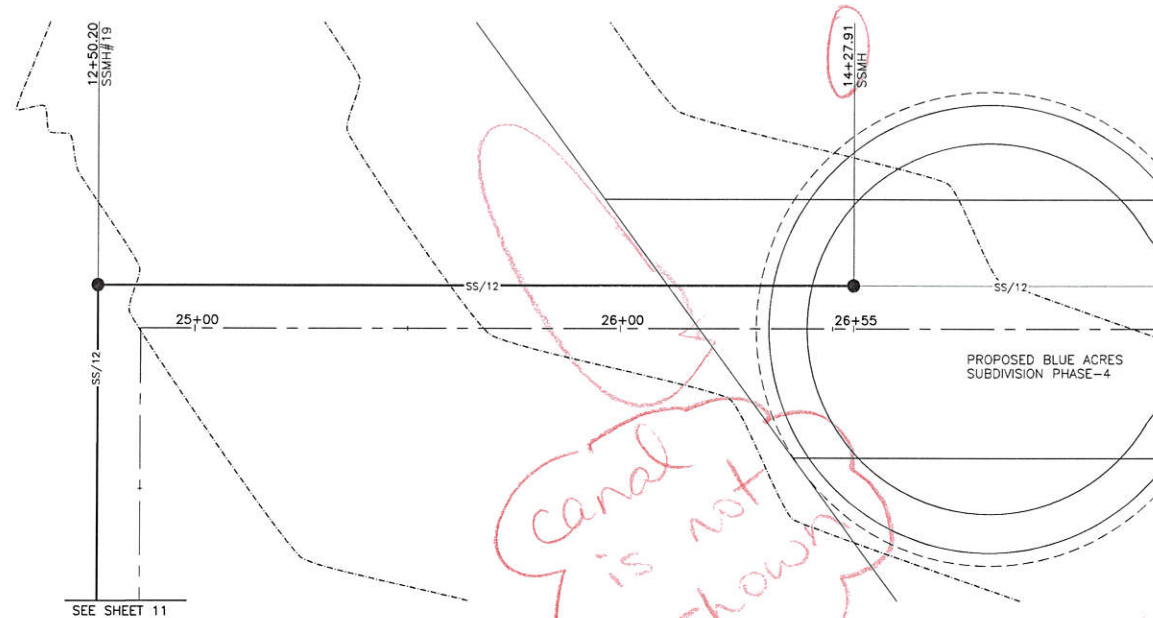
Mallard Springs Subdivision
 WEBER COUNTY, UTAH
2325 South Street
20+00.00 - 25+00.00

Revised: 11-3-14

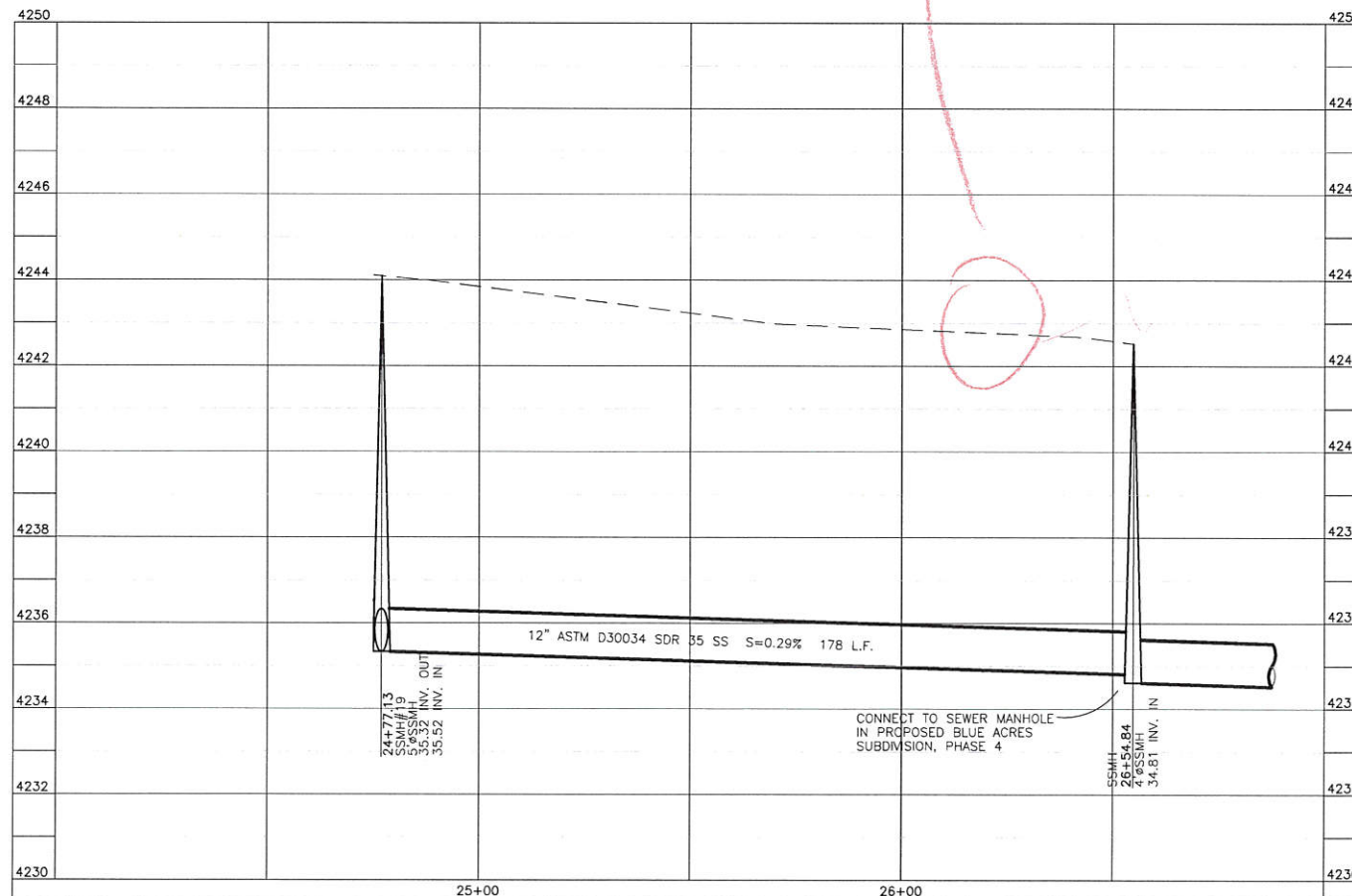
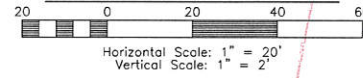


Project Info.
 Engineer: J. NATE REEVE, P.E.
 Drafter: R. HANSEN
 Begin Date: NOVEMBER 4, 2013
 Name: MALLARD SPRINGS SUBDIVISION
 Number: 3442-A30

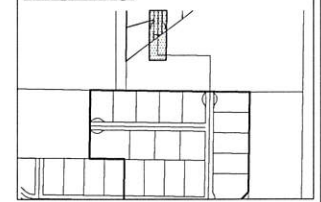
Blue Stakes Location Center
Call: Toll Free 1-800-662-4111
 Two Working Days Before You Dig



4075 West Street



Key Map NOT TO SCALE



Construction Notes:

- 1) ALL CONSTRUCTION IS TO CONFORM TO THE STANDARD DRAWINGS AND SPECIFICATIONS OF WEBER COUNTY.
- 2) CONSTRUCT HANDICAP RAMP PER ADA AND CITY REQUIREMENTS.

CULINARY WATER

W/8 - 8" PVC C-900 CLASS 200 WATER

SANITARY SEWER

SS/8 - 8" ASTM D3034 SDR 35 SEWER
SS/12 - 12" ASTM D3034 SDR 35 SEWER

DUE TO THE SHALLOWNESS OF THE SEWER LINE THROUGH ADJACENT FIELD, CLASS I OR CLASS II PIPE EMBEDMENT (PER ASTM D2487) INSTALLED PER ASTM D 2321 WITH 95% MODIFIED PROCTOR.

STORM DRAIN

SD/15 - 15" RCP STORM DRAIN

SECONDARY WATER

SW/8 - 8" PVC C-900 SECONDARY WATER LINE

Canal Crossing Notes

- 1) ANY CROSSING OF THE HOOPER IRR. CANALS MUST OBTAIN A LICENSE AGREEMENT.
- 2) A CHAIN LINK FENCE MUST BE INSTALLED AT 12' FROM HIGH BANK ON THE OFF ROAD SIDE AND 22' ON ROAD SIDE. THE PROPERTY IS ON THE OFF ROAD SIDE, BUT MUST FENCE THE ENTIRE EASEMENT THROUGH THE PROPERTY.
- 3) THE SEWER LINE MUST BE INSTALLED IN AN 18" STEEL CASING EXTENDING 4'-0" BEYOND HIGH BANK BOTH SIDES OF THE CANAL ACCORDING TO HOOPER IRR. COMPANY STANDARD DETAILS.
- 4) NO DRAINAGE FROM THE DEVELOPMENT IS ALLOWED INTO THE CANAL SYSTEM.
- 5) ALL CONSTRUCTION TO BE DONE IN ACCORDANCE WITH HOOPER IRR. COMPANY STANDARDS.

show
show

Reeve & Associates, Inc.
220 CHAMBERS STREET, SUITE 14, OGDEN, UTAH 84403
TEL: 801-468-4400
FAX: 801-468-4401
WWW.REEVE-ASSOCIATES.COM

RA

LAND SURVEYORS • CIVIL ENGINEERS • LANDSCAPE ARCHITECTS

DATE	DESCRIPTION
5-2-14	RH County Comments
9-4-14	ST County Comments
9-30-14	ST County Comments
10-9-14	ST County Comments
11-3-14	RH Sewer Revisions
11-24-14	ST HIC Comments

Mallard Springs Subdivision
WEBER COUNTY, UTAH
4075 West Street
12+00.00 - 15+00.00

Revised: 11-3-14



Project Info.
Engineer: J. NATE REEVE, P.E.
Drafter: R. HANSEN
Begin Date: NOVEMBER 4, 2013
Name: MALLARD SPRINGS SUBDIVISION
Number: 3442-A30

Blue Stakes Location Center
Call: Toll Free 1-800-662-4111
Two Working Days Before You Dig

Sheet **15**
12 Sheets