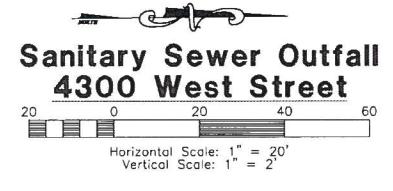
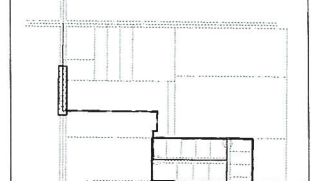


show in profile on sheet 12. Per 11/25/13 meeting - pothole to show sewer line is feasible.



Key Map NOT TO SCALE



Construction Notes:

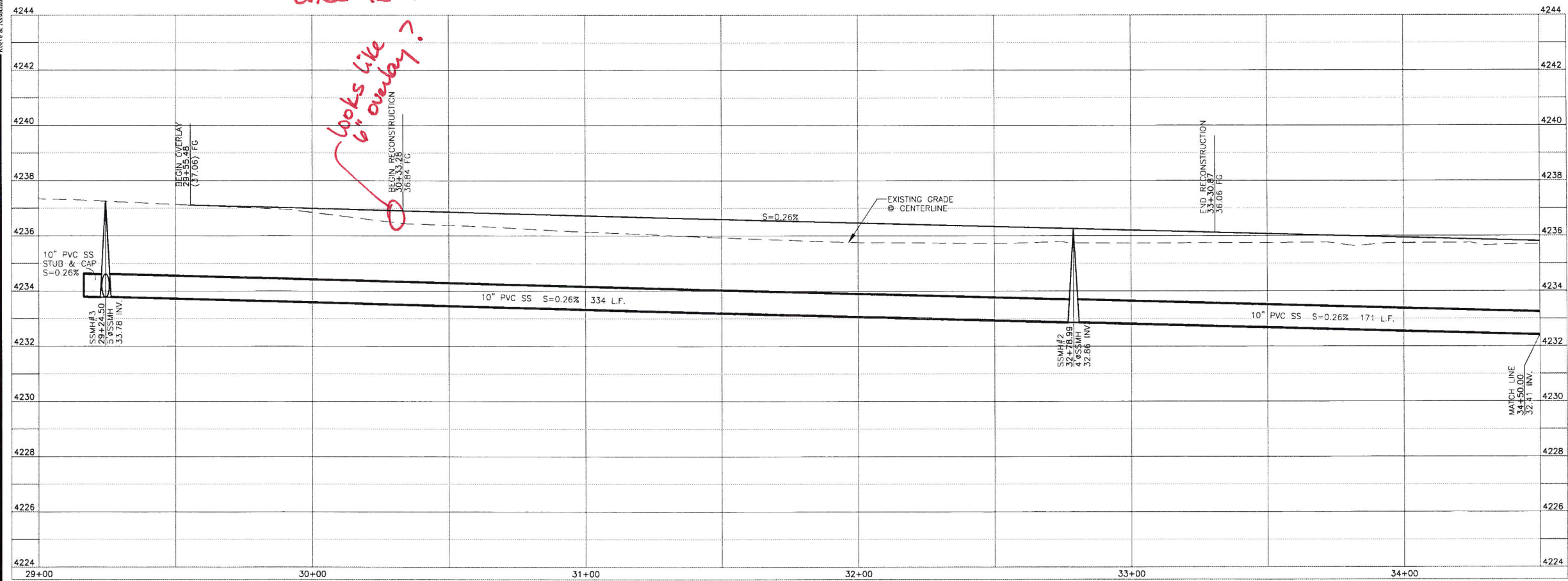
- 1) ALL CONSTRUCTION IS TO CONFORM TO THE STANDARD DRAWINGS AND SPECIFICATIONS OF WEBER COUNTY.
- CULINARY WATER**
W/8 - 8" PVC C-900 CLASS 200 WATER
- SANITARY SEWER**
SS/8 - 8" PVC C-900 SEWER LINE
SS/10 - 10" PVC C-900 SEWER LINE
- STORM DRAIN**
SD/15 - 15" RCP STORM DRAIN
- SECONDARY WATER**
SW/8 - 8" PVC C-900 SECONDARY WATER LINE

Reeve & Associates, Inc.
920 CHAMBERS STREET, SUITE 14, OGDEN, UTAH 84403
TEL: (801) 671-3100 FAX: (801) 671-2666 WWW.REEVE-ASSOC.COM
LAND PLANNERS • CIVIL ENGINEERS • LAND SURVEYORS
PAVING CONTRACTORS • STRUCTURAL ENGINEERS • LANDSCAPE ARCHITECTS

REVISIONS	DESCRIPTION

Mallard Springs Subdivision
WEBER COUNTY, UTAH

Sanitary Sewer Outfall - 4300 West St.
29+00.00 - 34+50.00

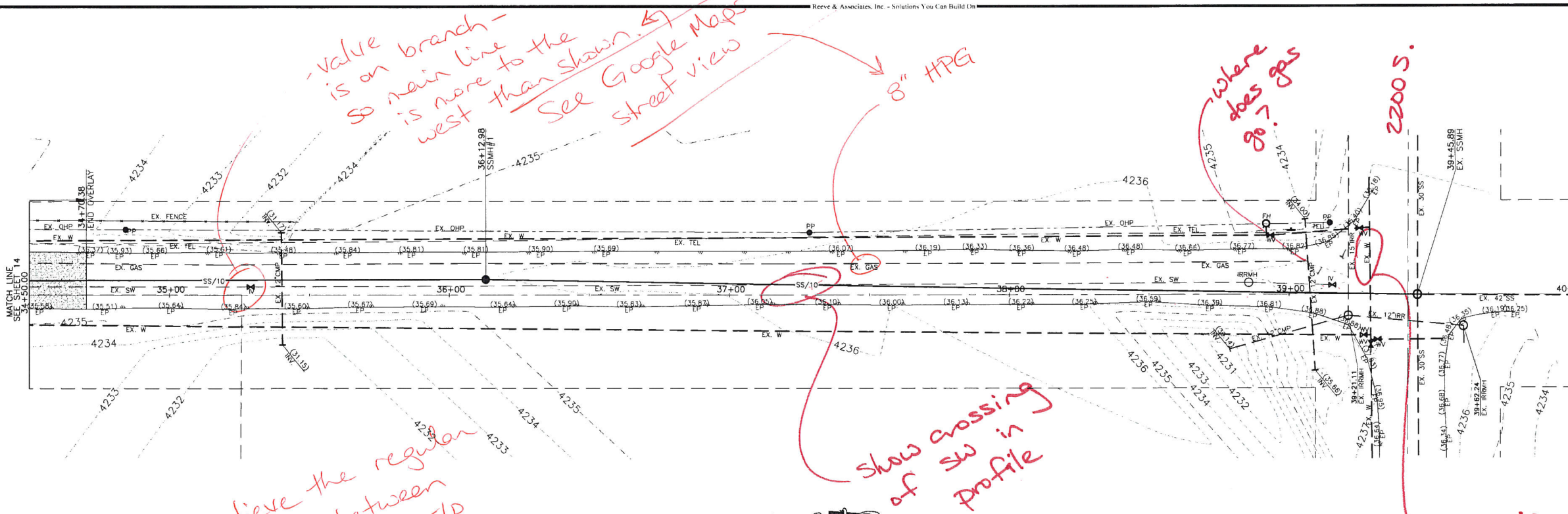


Revised: 1-14-14



Project Info.
Engineer: J. NATE REEVE, P.E.
Drafter: R. HANSEN
Begin Date: NOVEMBER 4, 2013
Name: MALLARD SPRINGS SUBDIVISION
Number: 3442-A30

Blue Stokes Location Center
Call: Toll Free 1-800-662-4111
Two Working Days Before You Dig



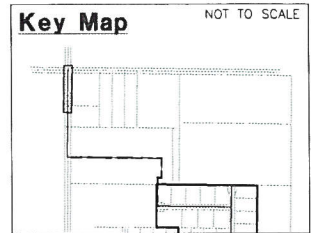
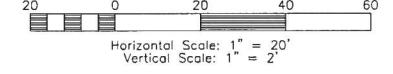
We believe the regular gas line is between the SW + east E/P

Show crossing of SW in profile

where does gas go? 2200.5.

Show in profile

Sanitary Sewer Outfall 4300 West Street



Construction Notes:

1) ALL CONSTRUCTION IS TO CONFORM TO THE STANDARD DRAWINGS AND SPECIFICATIONS OF WEBER COUNTY.

CULINARY WATER
W/8 - 8" PVC C-900 CLASS 200 WATER

SANITARY SEWER
SS/8 - 8" PVC C-900 SEWER LINE
SS/10 - 10" PVC C-900 SEWER LINE

STORM DRAIN
SD/15 - 15" RCP STORM DRAIN

SECONDARY WATER
SW/8 - 8" PVC C-900 SECONDARY WATER LINE

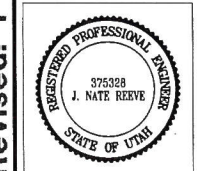
Reeve & Associates, Inc.
320 CHAMBERS STREET, SUITE 14, OGDEN, UTAH 84403
TEL: (801) 871-3100 FAX: (801) 871-2868 WWW.REEVE-ASSOCIATES.COM
LAND PLANNERS • CIVIL ENGINEERS • LAND SURVEYORS
TIMING ENGINEERS • STRUCTURAL ENGINEERS • LANDSCAPE ARCHITECTS

REVISIONS	DESCRIPTION
DATE	

Revised: 1-14-14

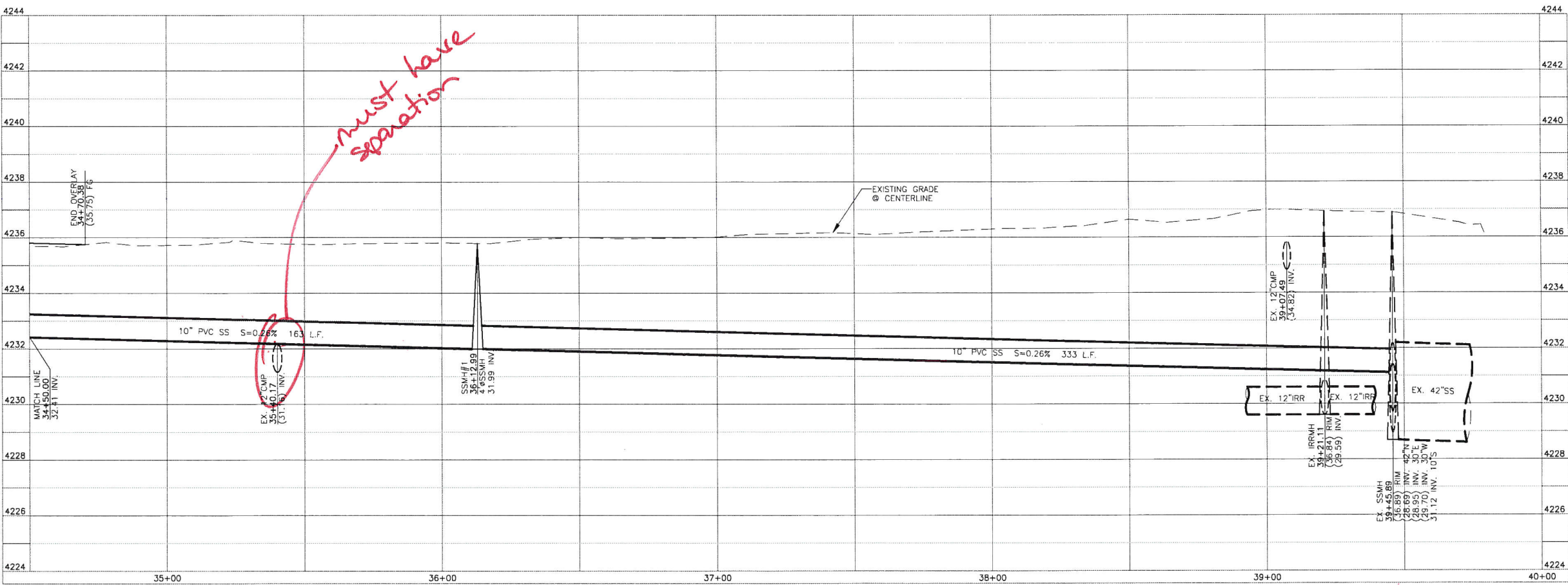
Mallard Springs Subdivision
WEBER COUNTY, UTAH

Sanitary Sewer Outfall - 4300 West St.
34+50.00 - 40+00.00



Project Info.
Engineer: J. NATE REEVE, P.E.
Drafted: R. HANSEN
Begin Date: NOVEMBER 4, 2013
Name: MALLARD SPRINGS SUBDIVISION
Number: 3442-A30

Blue Stakes Location Center
Call: Toll Free 1-800-662-4111
Two Working Days Before You Dig



Must have separation