

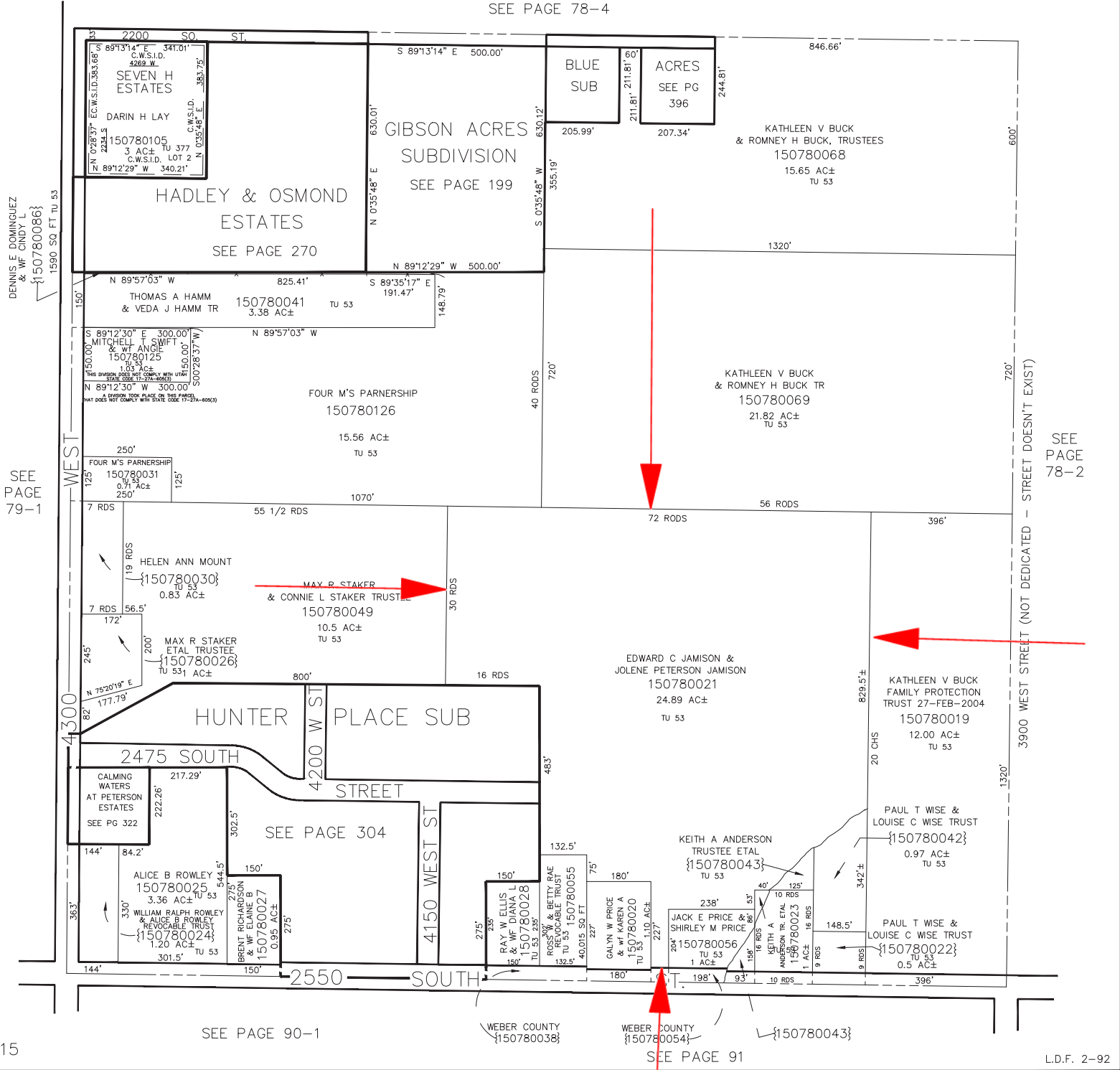
**THIS PLAT IS A REFERENCE ONLY. PLEASE REFER TO THE LEGAL DESCRIPTION FOR ACTUAL LOCATION AND DIMENSIONS OF THE PROPERTY. LINCOLN TITLE INSURANCE AGENCY ASSUMES NO LIABILITY FOR ACCURACY OR VARIATIONS WITH THE ACTUAL SURVEY.**

S.W. 1/4  
SECTION 28, T.6N., R.2W., S.L.B. & M.

IN WEBER COUNTY  
SCALE 1" = 200'

TAXING UNIT: 53, 377

SEE PAGE 78-4



SEE PAGE 79-1

SEE PAGE 78-2

SEE PAGE 90-1

WEBER COUNTY {150780038}

WEBER COUNTY {150780054}

SEE PAGE 91