

Construction Notes:

1) ALL CONSTRUCTION IS TO CONFORM TO THE STANDARD DRAWINGS AND SPECIFICATIONS OF WEBER COUNTY.

CULINARY WATER
W/8 - 8" PVC C-900 CLASS 200 WATER

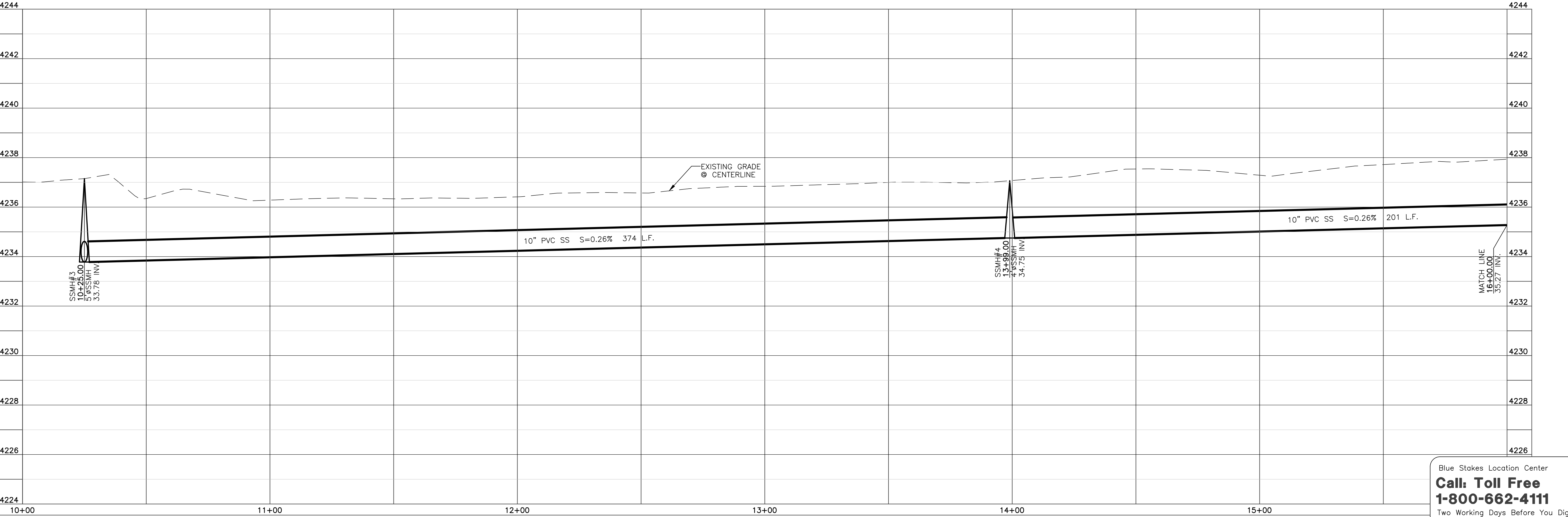
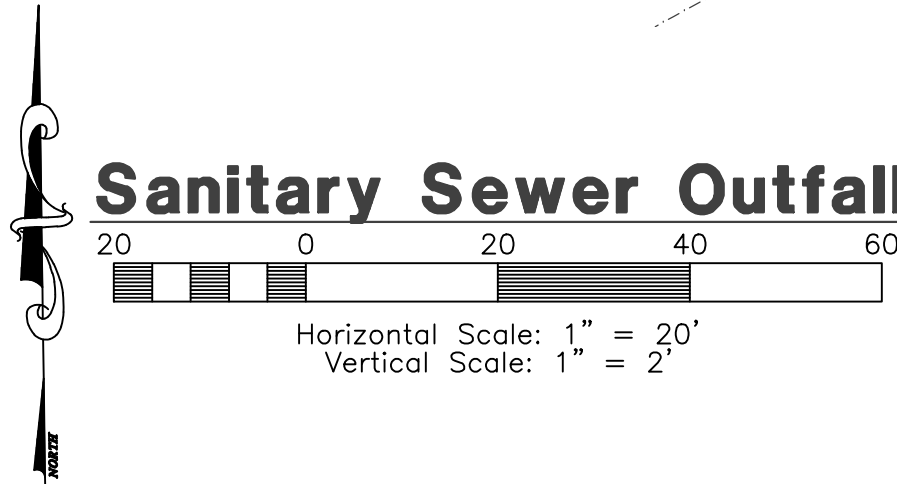
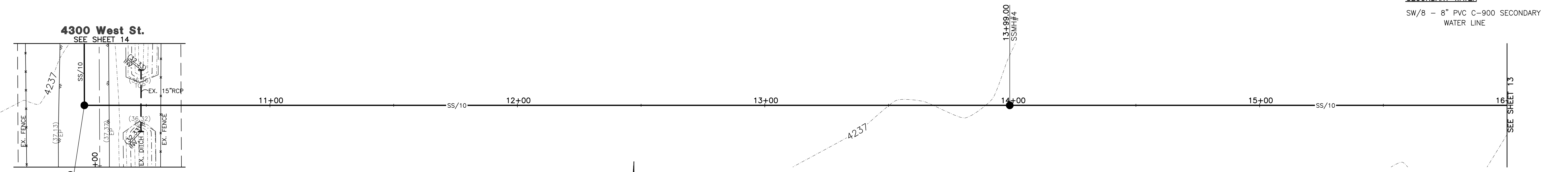
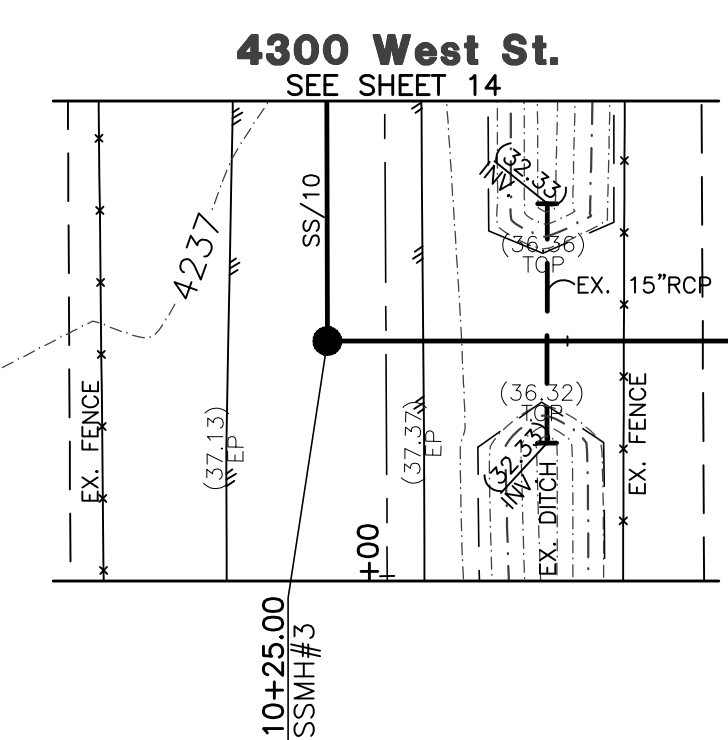
SANITARY SEWER
SS/8 - 8" PVC C-900 SEWER LINE
SS/10 - 10" PVC C-900 SEWER LINE

STORM DRAIN
SD/15 - 15" RCP STORM DRAIN

SECONDARY WATER
SW/8 - 8" PVC C-900 SECONDARY WATER LINE

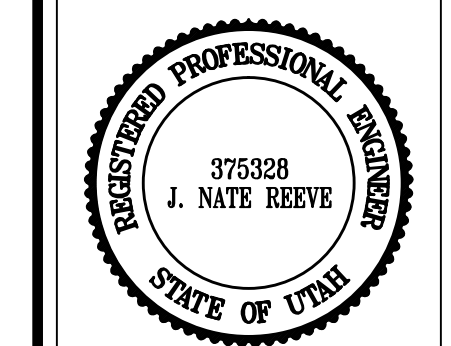
Reeve & Associates, Inc.
920 CHAMBERS STREET, SUITE 14, OGDEN, UTAH 84403
TEL: (801) 621-2100 FAX: (801) 621-2666 www.reeve-assoc.com
LAND PLANNERS • CIVIL ENGINEERS • LAND SURVEYORS
TRAFFIC ENGINEERS • STRUCTURAL ENGINEERS • LANDSCAPE ARCHITECTS

REVISIONS	DESCRIPTION



Blue Stakes Location Center
Call: Toll Free 1-800-662-4111
Two Working Days Before You Dig

Mallard Springs Subdivision
WEBER COUNTY, UTAH
Sanitary Sewer Outfall
10+00.00 - 16+00.00



Project Info.
Engineer: J. NATE REEVE, P.E.
Draftster: R. HANSEN
Begin Date: NOVEMBER 4, 2013
Name: MALLARD SPRINGS SUBDIVISION
Number: 3442-A30

Sheet **12** of **17** Sheets