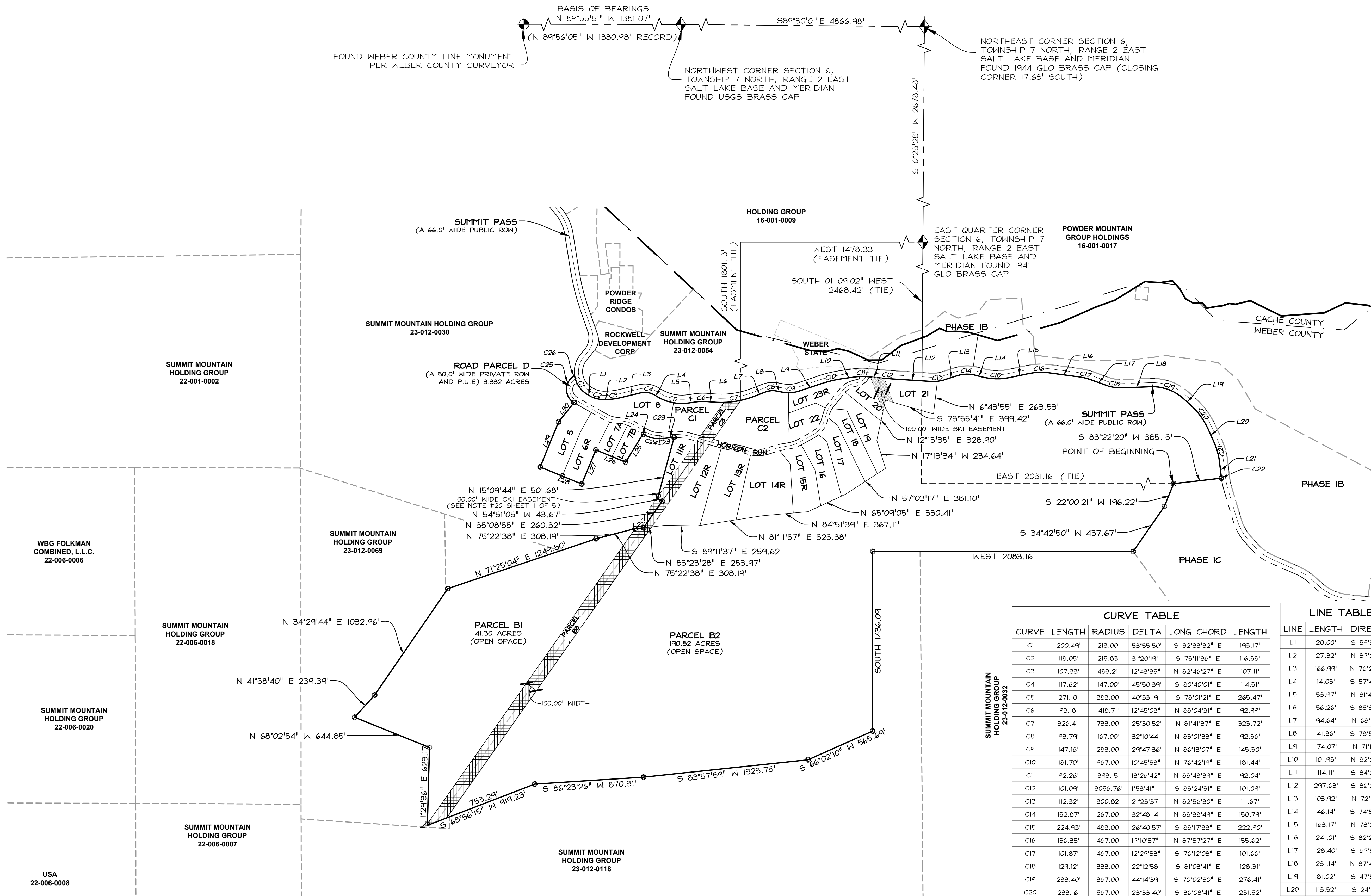
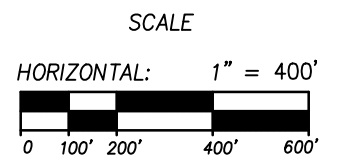
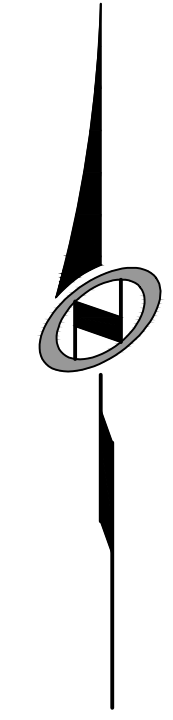


SUMMIT AT POWDER MOUNTAIN PHASE 1A

LOCATED IN THE NORTHEAST QUARTER OF SECTION 12, T 7N, R 1E, SLBM1, AND SECTION 7, THE SOUTH HALF OF SECTIONS 5 & 6, AND THE NORTH HALF OF SECTION 8, T 7N, R 2E, SLBM1.

DATE: _____ TIME: _____ DRAWING NAME: _____
 SERVER: _____ PLOTTING VIEW: _____
 PAPER: _____ RECORDS:



LEGEND

- BOUNDARY LINE
- LOT LINE
- SECTION LINE
- QUARTER SECTION LINE
- COUNTY LINE
- ADJOINER DEED LINES
- AREA TIE LINES
- CALCULATED SECTION CORNER AS NOTED
- SECTION CORNER AS NOTED
- SET 5/8" X 2" REBAR WITH "NOLTE ASSOC." PLASTIC CAP
- BUILDABLE AREA
- EASEMENT

CURVE TABLE					
CURVE	LENGTH	RADIUS	DELTA	LONG CHORD	LENGTH
C1	200.49'	213.00'	53°55'50"	S 32°33'32" E	193.17'
C2	118.05'	215.83'	31°20'19"	S 75°11'36" E	116.58'
C3	107.33'	483.21'	12°43'35"	N 82°46'27" E	107.11'
C4	117.62'	147.00'	45°50'39"	S 80°40'01" E	114.51'
C5	271.10'	383.00'	40°33'19"	S 78°01'21" E	265.47'
C6	93.18'	418.71'	12°45'03"	N 88°04'31" E	92.99'
C7	326.41'	733.00'	25°30'52"	N 81°41'37" E	323.72'
C8	93.79'	167.00'	32°10'44"	N 85°01'33" E	92.56'
C9	147.16'	283.00'	29°47'36"	N 86°13'07" E	145.50'
C10	181.70'	967.00'	10°45'58"	N 76°42'19" E	181.44'
C11	92.26'	393.15'	13°26'42"	N 88°48'39" E	92.04'
C12	101.09'	305.76'	1°53'41"	S 85°24'51" E	101.09'
C13	112.32'	300.82'	21°23'37"	N 82°56'30" E	111.67'
C14	152.87'	267.00'	32°48'14"	N 88°38'49" E	150.79'
C15	224.93'	483.00'	26°40'57"	S 88°17'33" E	222.90'
C16	156.35'	467.00'	19°10'57"	N 87°57'27" E	155.62'
C17	101.87'	467.00'	12°29'53"	S 76°12'08" E	101.66'
C18	129.12'	333.00'	22°12'58"	S 81°03'41" E	128.31'
C19	283.40'	367.00'	44°14'39"	S 70°02'50" E	276.41'
C20	233.16'	567.00'	23°33'40"	S 36°08'41" E	231.52'

LINE TABLE		
LINE	LENGTH	DIRECTION
L1	20.00'	S 59°31'27" E
L2	27.32'	N 89°08'14" E
L3	166.99'	N 76°24'39" E
L4	14.03'	S 57°44'42" E
L5	53.97'	N 81°42'00" E
L6	56.26'	S 85°32'57" E
L7	94.64'	N 68°56'11" E
L8	41.36'	S 78°53'05" E
L9	174.07'	N 71°19'19" E
L10	101.93'	N 82°05'18" E
L11	114.11'	S 84°28'01" E
L12	297.63'	S 86°21'42" E
L13	103.92'	N 72°14'41" E
L14	46.14'	S 74°57'04" E
L15	163.17'	N 78°21'59" E
L16	241.01'	S 82°27'04" E
L17	128.40'	S 69°57'12" E
L18	231.14'	N 87°49'50" E
L19	81.02'	S 47°55'31" E
L20	113.52'	S 24°21'51" E
L21	118.34'	S 6°37'40" E
L22	80.94'	N 83°23'28" E
L23	63.25'	S 84°20'22" E

LINE TABLE		
LINE	LENGTH	DIRECTION
L24	9.28'	N 58°25'06" W
L25	265.07'	S 31°34'54" W
L26	257.38'	N 67°30'09" W
L27	295.08'	S 22°29'51" W
L28	359.08'	N 67°44'01" W
L29	389.31'	N 22°15'59" E
L30	196.43'	N 38°29'38" E

CURVE TABLE					
CURVE	LENGTH	RADIUS	DELTA	LONG CHORD	LENGTH
C21	175.52'	567.00'	17°44'11"	S 15°29'46" E	174.82'
C22	6.19'	603.42'	0°35'15"	S 6°55'18" E	6.19'
C23	37.87'	475.00'	4°34'05"	S 86°37'24" W	37.86'
C24	146.25'	225.00'	37°14'33"	N 77°02'22" W	143.69'
C25	249.30'	125.00'	114°16'09"	N 1°14'03" W	209.99'
C26	21.47'	20.00'	61°29'35"	N 25°09'14" E	20.45'

SUMMIT AT POWDER MOUNTAIN PHASE 1A BOUNDARY, PARCEL A AND PARCEL B1, B2 AND B3, PARCEL C1, C2 AND C3

NO.	BY	DATE	REVISIONS:
3	T.D.	2013-10-30	COUNTY REDLINES
2	T.D.	2013-10-20	PHASE 1E
1	T.D.	2013-09-17	PLAT NOTES & LEGAL DESCRIPTION

LOCATED IN SECTION 8 OF TOWNSHIP 7 NORTH, RANGE 2 EAST, SALT LAKE BASE AND MERIDIAN, WEBER COUNTY, UTAH

Sheet 2 of 4

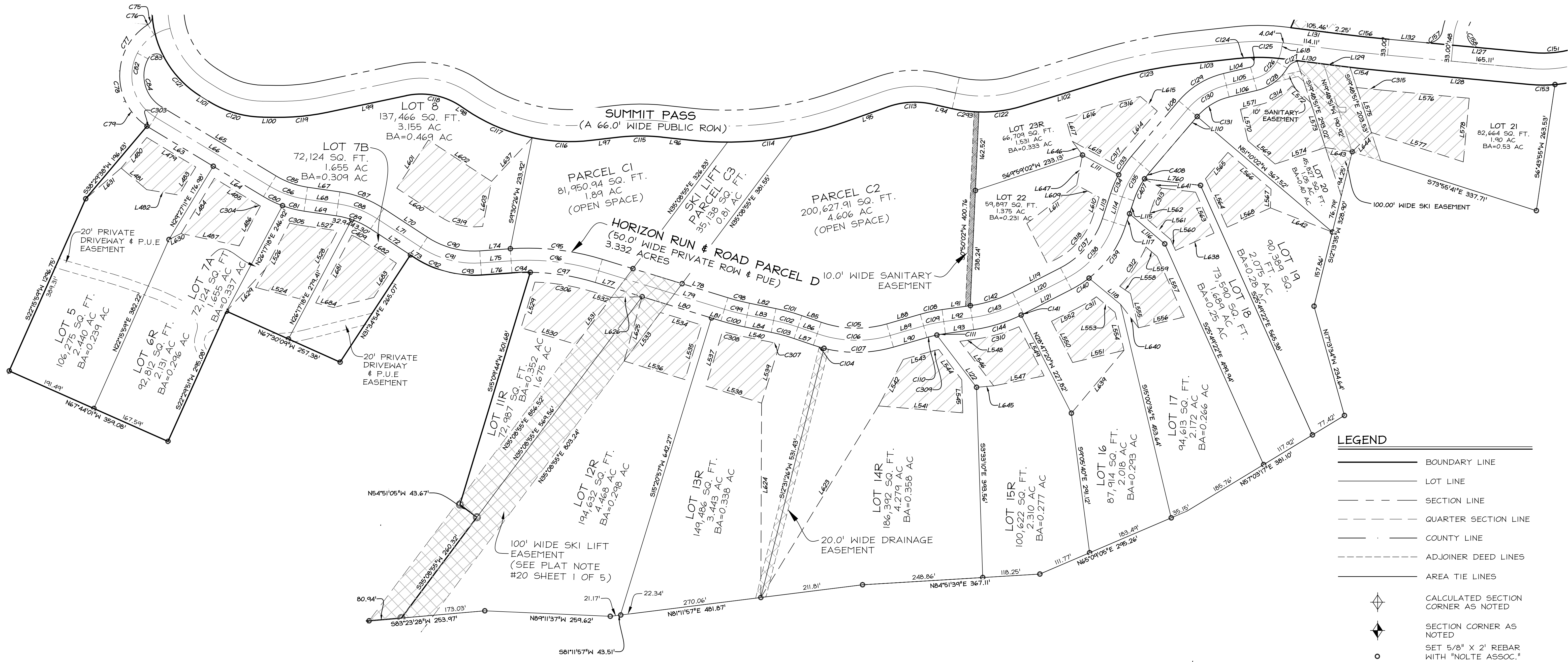
NIVIS
NOLTE VERTICALIVE
 5217 SOUTH STATE STREET, SUITE 300 MURRAY, UT 84107
 801.743.1300 TEL. 801.743.0300 FAX WWW.NOLTE.COM

RECORDED #
 STATE OF UTAH, COUNTY OF WEBER, RECORDED AND FILED AT THE REQUEST OF:
 ENTRY NO: _____
 DATE: _____ TIME: _____
 BOOK: _____ PAGE: _____
 FEE \$ _____
 WEBER COUNTY RECORDER

SUMMIT AT POWDER MOUNTAIN PHASE 1A

LOCATED IN THE NORTHEAST QUARTER OF SECTION 12, T 7N, R 1E, SLBM, AND SECTION 7, THE SOUTH HALF OF SECTIONS 5 & 6, AND THE NORTH HALF OF SECTION 8, T 7N, R 2E, SLBM.

DATE: _____ TIME: _____
 SERVER: _____ SERVICE: _____
 PROJ. NO.: _____ DRAWING NO.: _____
 SHEET NO.: _____



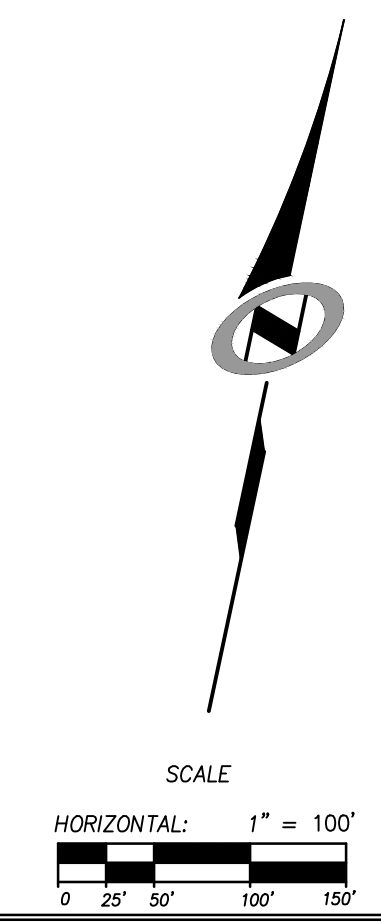
LEGEND

- BOUNDARY LINE
- LOT LINE
- SECTION LINE
- QUARTER SECTION LINE
- COUNTY LINE
- ADJOINER DEED LINES
- AREA TIE LINES
- CALCULATED SECTION CORNER AS NOTED
- SECTION CORNER AS NOTED
- SET 5/8" X 2' REBAR WITH "NOLTE ASSOC." PLASTIC CAP
- BUILDABLE AREA
- EASEMENT

NO.	BY	DATE	REVISIONS:
3	T.D.	2013-10-30	COUNTY REDLINES
2	T.D.	2013-10-20	PHASE 1E
1	T.D.	2013-09-17	PLAT NOTES & LEGAL DESCRIPTION

SUMMIT AT POWDER MOUNTAIN PHASE 1A
 LOTS 1 TO 14 & PARCEL C

LOCATED IN SECTION 8 OF
 TOWNSHIP 7 NORTH, RANGE 2 EAST, SALT LAKE
 BASE AND MERIDIAN, WEBER COUNTY, UTAH



RECORDED # _____
 STATE OF UTAH, COUNTY OF WEBER,
 RECORDED AND FILED AT THE
 REQUEST OF: _____
 ENTRY NO: _____
 DATE: _____ TIME: _____
 BOOK: _____ PAGE: _____
 FEE \$ _____

Sheet 3 of 4

NIVIS
 NOLTE VERTICALFIVE
 5217 SOUTH STATE STREET, SUITE 300 MURRAY, UT 84107
 801.743.1300 TEL. 801.743.0300 FAX WWW.NOLTE.COM

WEBER COUNTY RECORDER

SUMMIT AT POWDER MOUNTAIN PHASE 1A

LOCATED IN THE NORTHEAST QUARTER OF SECTION 12, T 7N, R 1E, S1B1, AND SECTION 7, THE SOUTH HALF OF SECTIONS 5 & 6, AND THE NORTH HALF OF SECTION 8, T 7N, R 2E, S1B1.

DATE: TIME: DRAWING NAME:
SERVER: SERVICE: PLOTTING VIEW:
PAIR: RESPONSE:
PROJ. MOR:

LINE TABLE with columns: LINE, LENGTH, DIRECTION. Rows L63 to L84.

LINE TABLE with columns: LINE, LENGTH, DIRECTION. Rows L85 to L104.

LINE TABLE with columns: LINE, LENGTH, DIRECTION. Rows L105 to L148.

LINE TABLE with columns: LINE, LENGTH, DIRECTION. Rows L149 to L192.

CURVE TABLE with columns: CURVE, LENGTH, RADIUS, DELTA, LONG CHORD, LENGTH. Rows C74 to C93.

CURVE TABLE with columns: CURVE, LENGTH, RADIUS, DELTA, LONG CHORD, LENGTH. Rows C94 to C114.

CURVE TABLE with columns: CURVE, LENGTH, RADIUS, DELTA, LONG CHORD, LENGTH. Rows C115 to C137.

LINE TABLE with columns: LINE, LENGTH, DIRECTION. Rows L538 to L557.

LINE TABLE with columns: LINE, LENGTH, DIRECTION. Rows L558 to L577.

LINE TABLE with columns: LINE, LENGTH, DIRECTION. Rows L578 to L630.

LINE TABLE with columns: LINE, LENGTH, DIRECTION. Rows L631 to L760.

CURVE TABLE with columns: CURVE, LENGTH, RADIUS, DELTA, LONG CHORD, LENGTH. Rows C138 to C312.

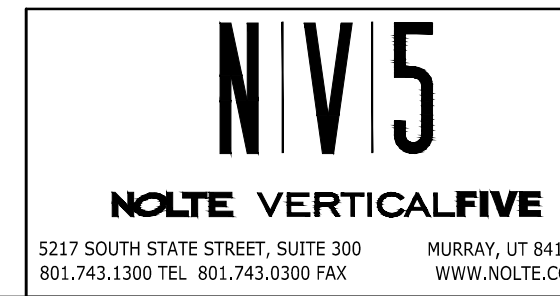
CURVE TABLE with columns: CURVE, LENGTH, RADIUS, DELTA, LONG CHORD, LENGTH. Rows C313 to C409.

SUMMIT AT POWDER MOUNTAIN PHASE 1A TABLES

LOCATED IN SECTION 8 OF TOWNSHIP 7 NORTH, RANGE 2 EAST, SALT LAKE BASE AND MERIDIAN, WEBER COUNTY, UTAH

Table with columns: NO., BY, DATE, REVISIONS. Contains revision history.

Sheet 4 of 4



RECORDED # STATE OF UTAH, COUNTY OF WEBER, RECORDED AND FILED AT THE REQUEST OF: ENTRY NO: DATE: TIME: BOOK: PAGE: FEE \$ WEBER COUNTY RECORDER

XREFS: