

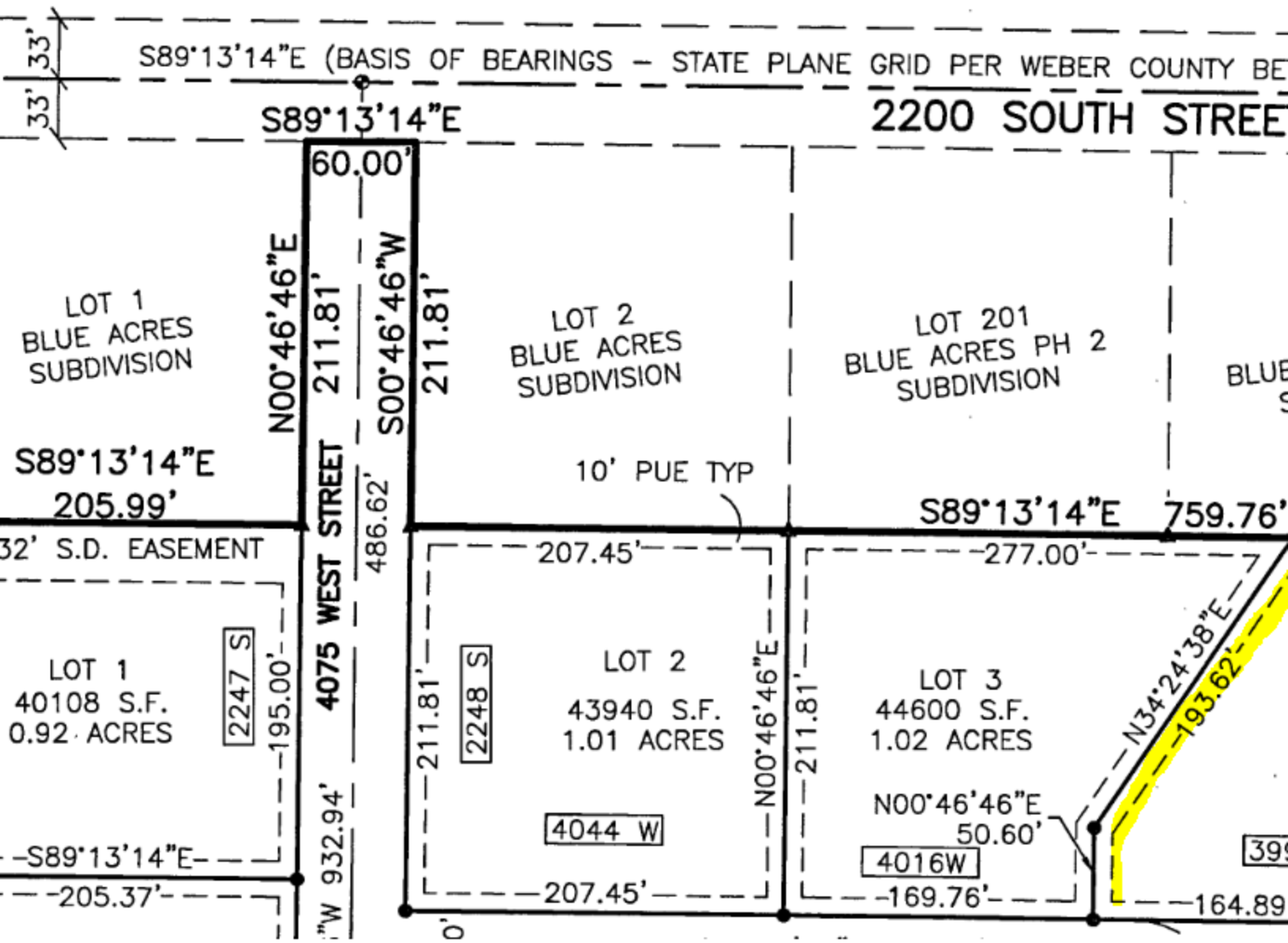
CAMERON CROSS

T OF THE SOUTHWEST QUARTER OF SECTION 28, TOWNSHIP

WEBER C

NOVE

HAZY ACRES SUBDIVISION

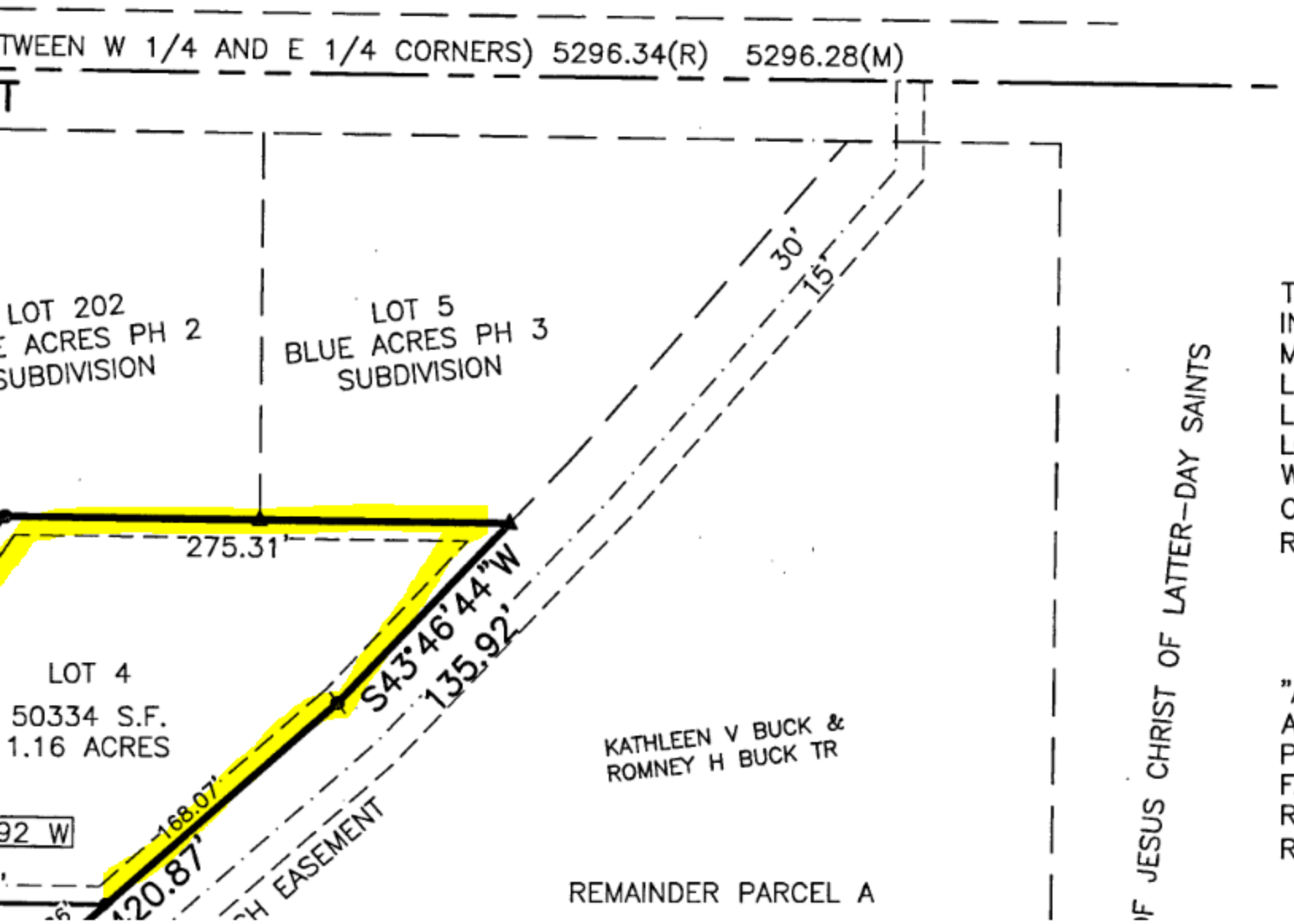


MISSING SUBDIVISION

6 NORTH, RANGE 2 WEST, SALT LAKE BASE AND MERIDIAN,
COUNTY, UTAH
EMBER 2016

BASIS OF BEARINGS

THE BASIS OF BEARINGS FOR THIS PLAT IS THE UTAH COOR SYSTEM (1927) NORTH ZONE, DETERMINED LOCALLY BY THE COUNTY RECORDS ALONG THE LINE BETWEEN THE WEST QUARTER CORNER AND THE EAST QUARTER CORNER OF SECTION 28, T6N, R2W, S13E, SALT LAKE BASE AND MERIDIAN, U.S. SHOWN HEREON AS: S89°13'14"E



U.S. SURVEY

DINATE
WEBER EAST
RTER 28,
TOWNSHIP 6 WEST,
. SURVEY, U.S. S
SET 1'

THE PURPOSE OF THIS
TO LOTS AND STREETS
MATCHING THE EAST LIN
INES BY MATCHING BLL
INE FOLLOWS THE NOR
OCATION OF THE IRRIG
WITH THE WIDTH BEING
OMPANY. ALL BOUNDAR
EBAR AND PLASTIC CAP

A

AGRICULTURE IS THE P
GRICULTURAL OPERATIO
ARTICULAR ZONE ARE I
ARM MACHINERY AND M
RESTRICTION ON THE BA
ESIDENTS OF THIS SUE