

FENSTER FARM SUBDIVISION PHASE 2

IN WEBER COUNTY

SCALE 1" = 60'

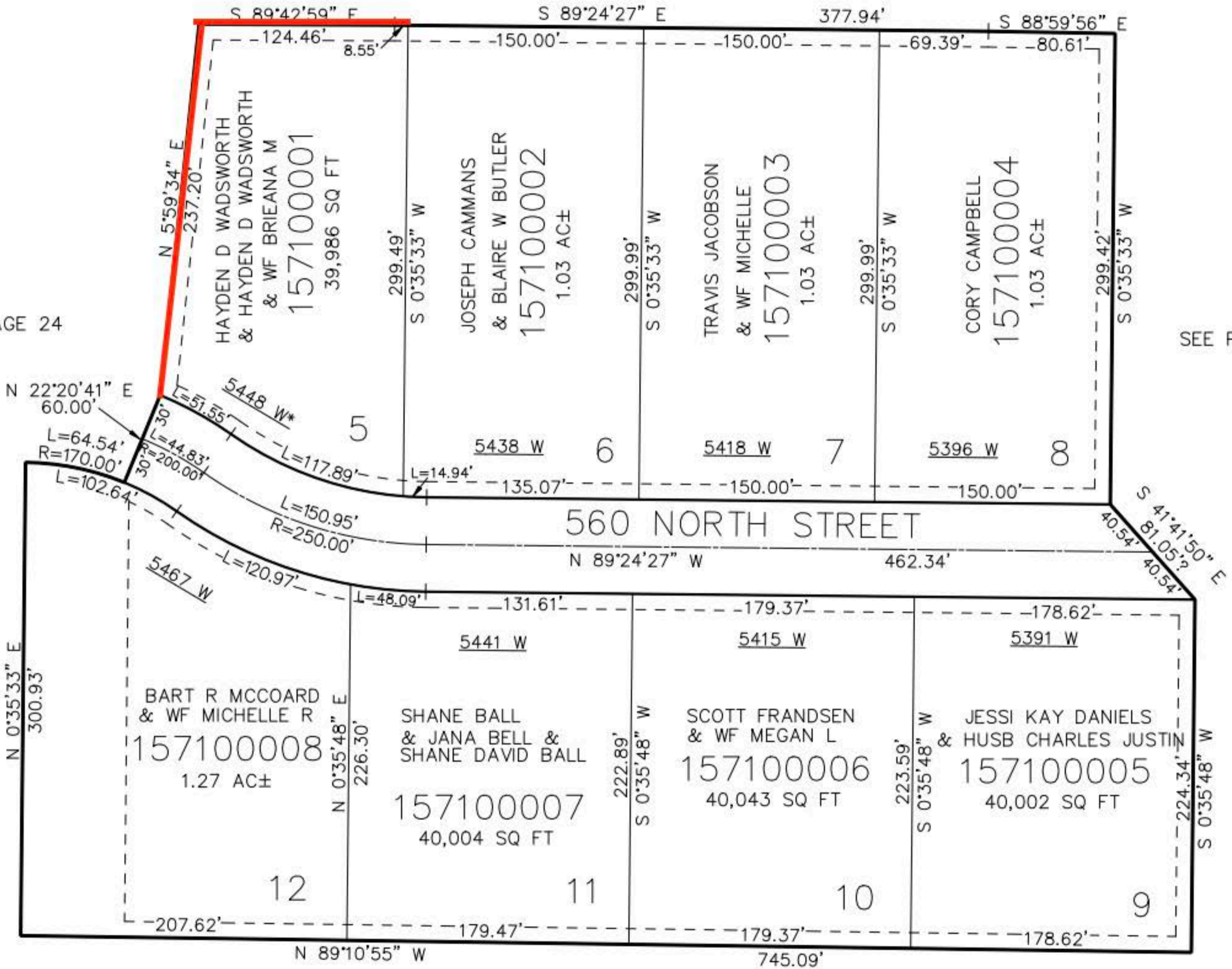
TAXING UNIT: 531

SEE PAGE 24

SEE PAGE 24

SEE PAGE 24

SEE PAGE 24



E#3061724 ADDRESS AFF
 10' UTILITY & DRAINAGE EASEMENTS EACH
 SIDE OF PROPERTY LINES AS INDICATED
 BY DASHED LINES EXCEPT AS OTHERWISE
 SHOWN.

FOR COMPLETE ENG DATA SEE
 ORIGINAL DEDICATION PLAT IN
 BOOK 87, PAGE 20 OF RECORDS.