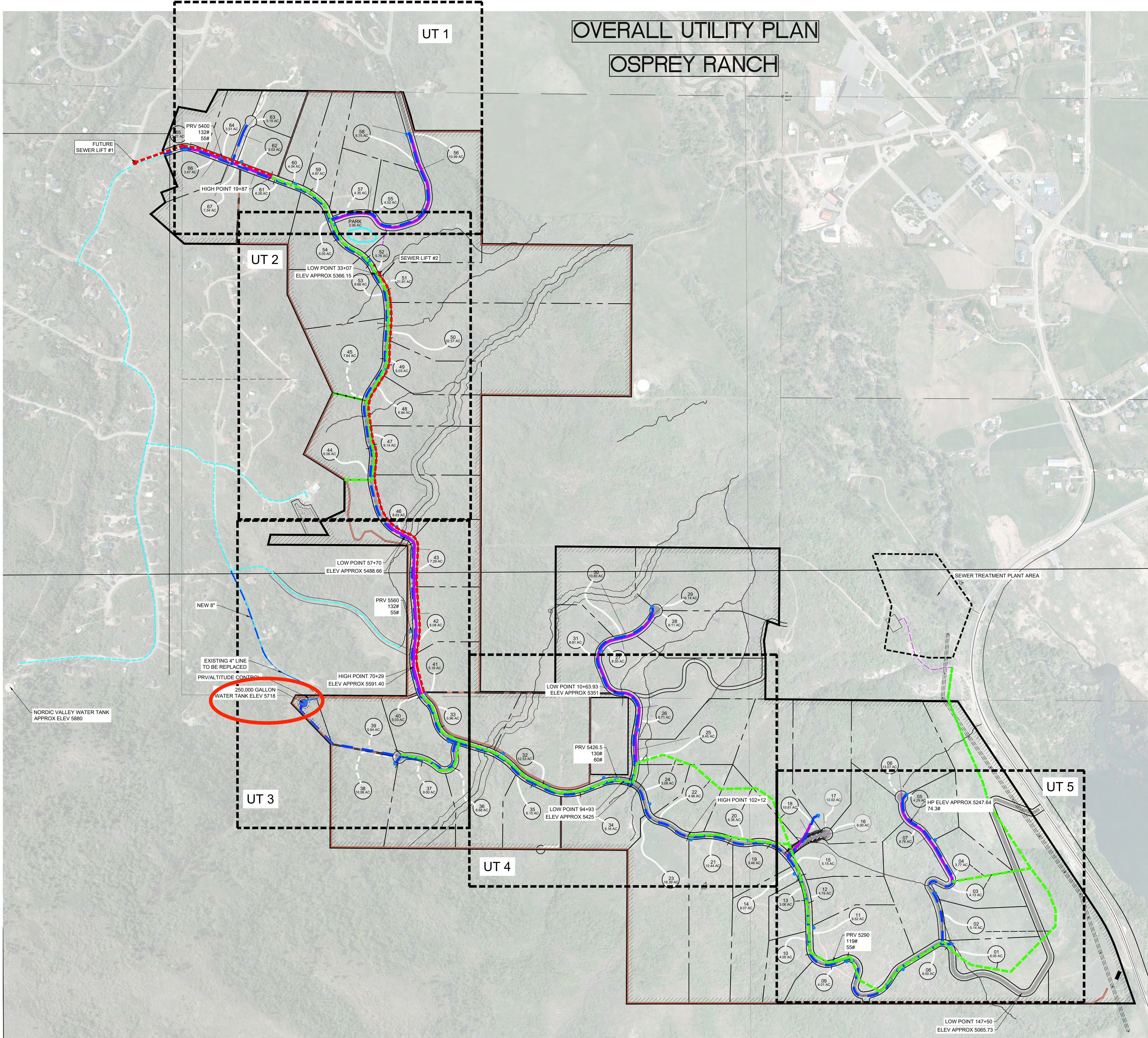


# OVERALL UTILITY PLAN OSPREY RANCH



- - - - - PRESSURE SEWER
- - - - - GRAVITY SEWER
- - - - - LOW PRESSURE SEWER
- - - - - PROPOSED 4" WATERLINE
- - - - - PROPOSED 8" WATERLINE
- - - - - EXISTING WATERLINE
- 250,000 GALLON WATER TANK
- ◀ PROPOSED FIRE HYDRANT
- ⊠ PROPOSED PRV
- PROPOSED SEWER LIFT STATION

- SEWER IMPROVEMENTS**
- PHASE 1**
- GRAVITY SEWER
  - LOW PRESSURE SEWER
  - SEWER TREATMENT PLANT
- PHASE 2**
- LOW PRESSURE SEWER
  - 1 SEWER LIFT STATION WITH HIGH PRESSURE SEWER

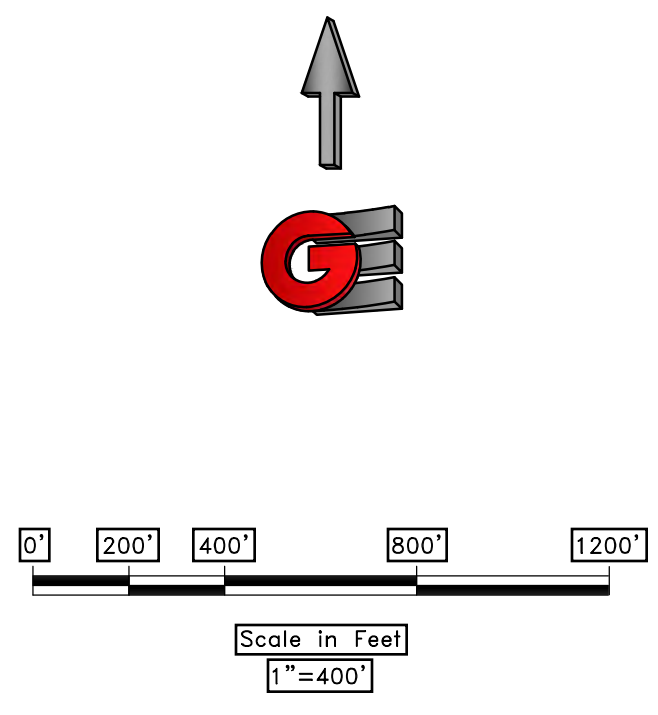
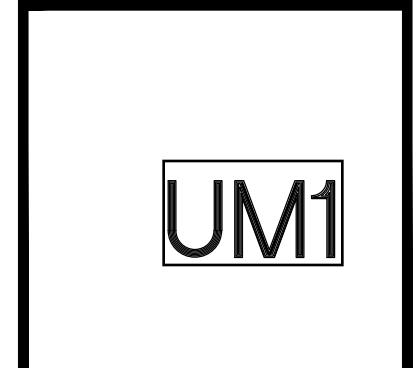
- CULINARY WATER IMPROVEMENTS**
- PHASE 1**
- 250 K GALLON WATER TANK
  - 47"8" WATER MAIN
  - PRESSURE REDUCING /PRESSURE SUSTAINING/ALTITUDE CONTROL STATION
  - 2 - PRESSURE REDUCING VALVES
- PHASE 2**
- 8" WATER MAIN
  - 2 - PRESSURE REDUCING VALVES

SCALE	DATE	DESIGN	DRAWN	CHECKED
1"=400'	6-22-24	KAN	KAN	RC

REVISIONS	DESCRIPTION

OVERALL UTILITY PLAN  
 OSPREY RANCH  
 UT-158  
 EDEN, WEBER, UTAH

**GARDNER ENGINEERING**  
 CIVIL • LAND PLANNING  
 MUNICIPAL • LAND SURVEYING  
 5150 SOUTH 375 EAST OGDEN, UT  
 OFFICE: 801-476-0202 FAX: 801-476-0066



12/21 - LEWIS, HOWES, 2015 - OSPREY RANCH, LESICA, DANA, OSPREY PLAN SHEETS.DWG

UM1