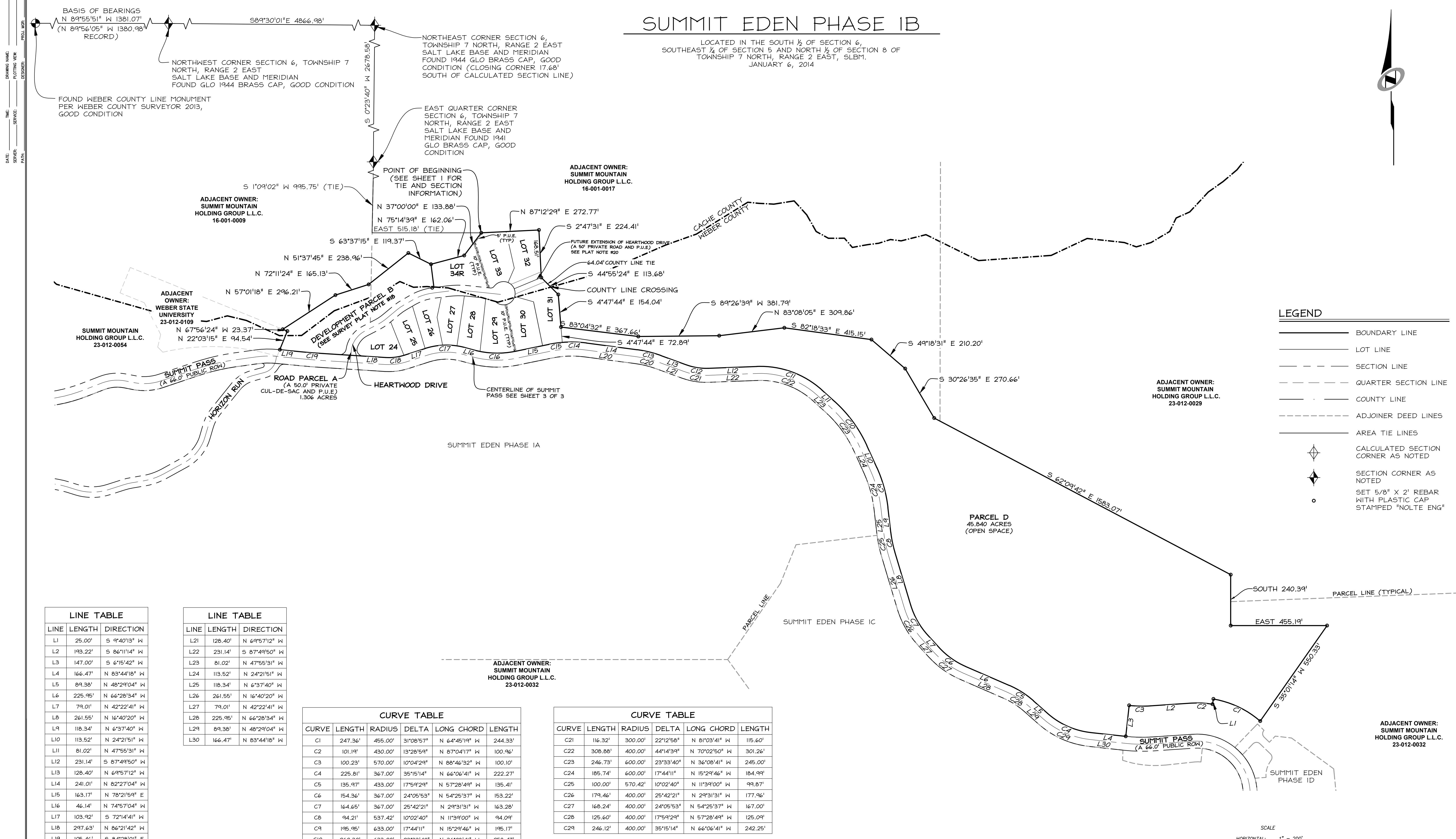
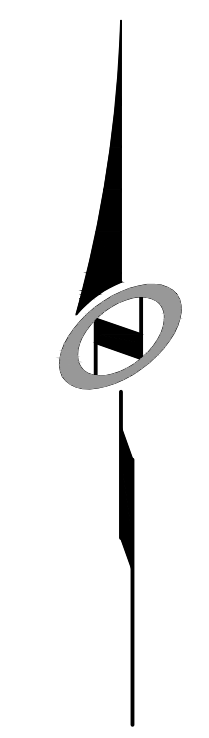


SUMMIT EDEN PHASE 1B

LOCATED IN THE SOUTH 1/2 OF SECTION 6,
SOUTHEAST 1/4 OF SECTION 5 AND NORTH 1/2 OF SECTION 8 OF
TOWNSHIP 7 NORTH, RANGE 2 EAST, SLBM.
JANUARY 6, 2014



LEGEND	
	BOUNDARY LINE
	LOT LINE
	SECTION LINE
	QUARTER SECTION LINE
	COUNTY LINE
	ADJOINER DEED LINES
	AREA TIE LINES
	CALCULATED SECTION CORNER AS NOTED
	SECTION CORNER AS NOTED
	SET 5/8" X 2' REBAR WITH PLASTIC CAP STAMPED "NOLTE ENG"

LINE TABLE		
LINE	LENGTH	DIRECTION
L1	25.00'	S 94°0'13" W
L2	193.22'	S 86°11'14" W
L3	147.00'	S 61°5'42" W
L4	166.47'	N 83°44'18" W
L5	89.38'	N 48°29'04" W
L6	225.95'	N 66°28'34" W
L7	79.01'	N 42°22'41" W
L8	261.55'	N 16°40'20" W
L9	118.34'	N 6°37'40" W
L10	113.52'	N 24°21'51" W
L11	81.02'	N 47°55'31" W
L12	231.14'	S 87°49'50" W
L13	128.40'	N 64°57'12" W
L14	241.01'	N 82°27'04" W
L15	163.17'	N 78°21'59" E
L16	46.14'	N 74°57'04" W
L17	103.92'	S 72°14'41" W
L18	297.63'	N 86°21'42" W
L19	105.46'	S 84°28'01" E
L20	241.01'	N 82°27'04" W

LINE TABLE		
LINE	LENGTH	DIRECTION
L21	128.40'	S 69°57'12" W
L22	231.14'	S 87°49'50" W
L23	81.02'	N 47°55'31" W
L24	113.52'	N 24°21'51" W
L25	118.34'	N 6°37'40" W
L26	261.55'	N 16°40'20" W
L27	79.01'	N 42°22'41" W
L28	225.95'	N 66°28'34" W
L29	89.38'	N 48°29'04" W
L30	166.47'	N 83°44'18" W

CURVE TABLE					
CURVE	LENGTH	RADIUS	DELTA	LONG CHORD	LENGTH
C1	247.36'	455.00'	31°08'57"	N 64°45'19" W	244.33'
C2	101.19'	430.00'	13°28'59"	N 87°04'17" W	100.96'
C3	100.23'	570.00'	10°04'29"	N 88°46'32" W	100.10'
C4	225.81'	367.00'	35°15'14"	N 66°06'41" W	222.27'
C5	135.97'	433.00'	17°59'29"	N 57°28'49" W	135.41'
C6	154.36'	367.00'	24°05'53"	N 54°25'37" W	153.22'
C7	164.65'	367.00'	25°42'21"	N 29°31'31" W	163.28'
C8	94.21'	537.42'	10°02'40"	N 11°39'00" W	94.09'
C9	195.95'	633.00'	17°44'11"	N 15°29'46" W	195.17'
C10	260.30'	633.00'	23°33'40"	N 36°08'41" W	258.47'
C11	334.37'	433.00'	44°14'39"	N 70°02'50" W	326.12'
C12	103.53'	267.00'	22°12'58"	N 81°03'41" W	102.88'
C13	116.26'	533.00'	12°29'53"	N 76°12'08" W	116.03'
C14	114.84'	533.00'	12°20'40"	N 88°37'24" W	114.61'
C15	63.61'	533.00'	6°50'17"	S 81°47'07" W	63.57'
C16	194.19'	417.00'	26°40'57"	N 88°17'33" W	192.44'
C17	190.65'	333.00'	32°48'14"	S 88°38'49" W	188.06'
C18	87.68'	234.82'	21°23'37"	S 82°56'30" W	87.17'
C19	98.91'	2990.76'	1°53'41"	S 85°24'51" E	98.90'
C20	109.07'	500.00'	12°29'53"	N 76°12'08" W	108.85'

CURVE TABLE					
CURVE	LENGTH	RADIUS	DELTA	LONG CHORD	LENGTH
C21	116.32'	300.00'	22°12'58"	N 81°03'41" W	115.60'
C22	308.88'	400.00'	44°14'39"	N 70°02'50" W	301.26'
C23	246.73'	600.00'	23°33'40"	N 36°08'41" W	245.00'
C24	185.74'	600.00'	17°44'11"	N 15°29'46" W	184.99'
C25	100.00'	570.42'	10°02'40"	N 11°39'00" W	99.87'
C26	179.46'	400.00'	25°42'21"	N 29°31'31" W	177.96'
C27	168.24'	400.00'	24°05'53"	N 54°25'37" W	167.00'
C28	125.60'	400.00'	17°59'29"	N 57°28'49" W	125.09'
C29	246.12'	400.00'	35°15'14"	N 66°06'41" W	242.25'

SUMMIT EDEN PHASE 1B
BOUNDARY AND PARCEL D

LOCATED IN THE SOUTH 1/2 OF SECTION 5,
SOUTHEAST 1/4 OF SECTION 6 AND
NORTH 1/2 OF SECTION 8 OF
TOWNSHIP 7 NORTH, RANGE 2 EAST, SALT LAKE
BASE AND MERIDIAN, WEBER COUNTY, UTAH

SCALE
HORIZONTAL: 1" = 200'
0 50' 100' 200' 300'

RECORDED #
STATE OF UTAH, COUNTY OF WEBER,
RECORDED AND FILED AT THE
REQUEST OF: _____
ENTRY NO: _____
DATE: _____ TIME: _____
BOOK: _____ PAGE: _____
FEE \$ _____

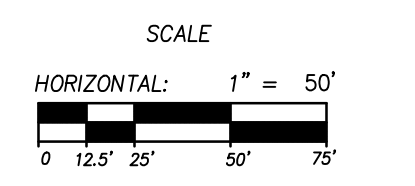
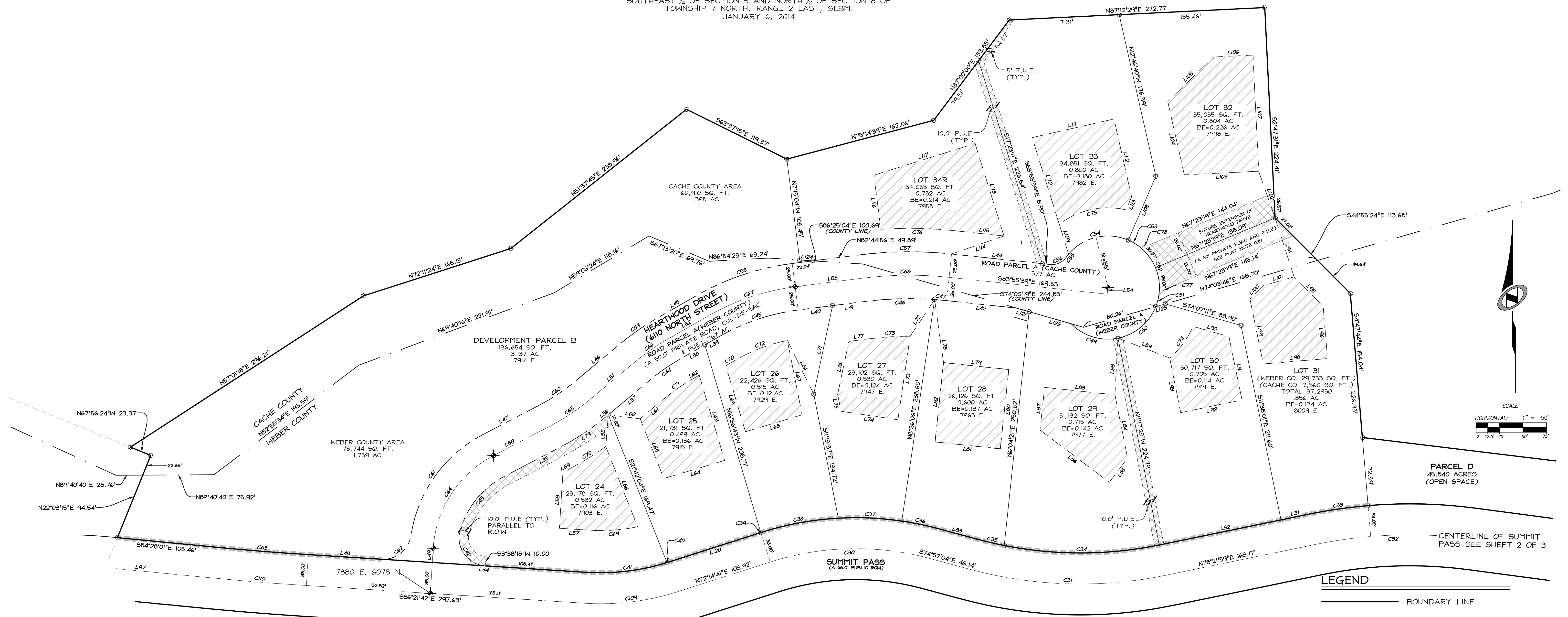
Sheet 2 of 3

NIVIS
NOLTE VERTICALFIVE
5217 SOUTH STATE STREET, SUITE 300 MURRAY, UT 84107
801.743.1300 TEL 801.743.0300 FAX WWW.NOLTE.COM

WEBER COUNTY RECORDER

SUMMIT EDEN PHASE 1B

LOCATED IN THE SOUTH 1/2 OF SECTION 6,
SOUTHEAST 1/4 OF SECTION 5 AND NORTH 1/2 OF SECTION 8 OF
TOWNSHIP 7 NORTH, RANGE 2 EAST, SLM1.
JANUARY 6, 2014



CURVE TABLE				
CURVE	LENGTH	RADIUS	DELTA	LONG CHORD
C30	171.76'	300.00'	32°48'14"	S 88°38'44" W 169.42'
C31	209.56'	450.00'	26°40'57"	S 88°17'33" E 207.67'
C32	167.40'	500.00'	19°10'57"	S 87°57'27" W 166.62'
C33	63.61'	533.00'	6°50'17"	S 81°47'07" W 63.57'
C34	166.44'	417.00'	22°52'06"	N 89°48'02" E 165.33'
C35	27.76'	417.00'	3°48'50"	S 76°51'29" E 27.75'
C36	38.44'	333.00'	6°36'50"	N 78°15'29" W 38.42'
C37	67.91'	333.00'	11°41'06"	N 87°24'27" W 67.80'
C38	84.30'	333.00'	14°30'18"	N 79°24'51" E 84.08'
C39	0.06'	333.00'	0°00'37"	S 72°15'00" W 0.06'
C40	1.04'	234.82'	0°15'16"	N 72°22'20" E 1.04'
C41	87.68'	234.82'	21°23'37"	N 82°56'30" E 87.17'
C42	54.01'	30.00'	103°08'42"	S 34°47'21" E 47.00'
C43	75.72'	95.00'	45°40'14"	S 71°27'14" W 88.14'
C44	39.27'	225.00'	10°00'04"	S 55°09'31" W 39.22'
C45	88.71'	225.00'	22°35'23"	S 71°27'14" W 88.14'
C46	74.35'	375.00'	11°21'36"	S 88°25'44" W 74.23'
C47	12.85'	375.00'	1°57'48"	N 84°54'34" W 12.85'
C48	54.44'	55.00'	56°42'33"	S 72°56'07" E 52.24'
C50	54.74'	55.00'	57°01'17"	N 50°11'58" E 52.51'

CURVE TABLE				
CURVE	LENGTH	RADIUS	DELTA	LONG CHORD
C51	11.64'	55.00'	12°07'44"	N 15°37'28" E 11.62'
C52	61.46'	55.00'	64°01'20"	N 22°27'03" W 58.31'
C53	11.74'	55.00'	12°13'40"	N 60°34'33" W 11.72'
C54	70.00'	55.00'	72°55'19"	S 76°50'57" W 65.37'
C55	4.65'	55.00'	4°50'27"	S 37°58'04" W 4.65'
C56	19.01'	18.00'	60°31'31"	N 65°48'35" E 18.14'
C57	98.83'	425.00'	13°19'25"	S 89°24'38" W 98.61'
C58	108.42'	275.00'	22°35'23"	S 71°27'14" W 107.72'
C59	48.00'	275.00'	10°00'04"	S 55°09'31" W 47.94'
C60	48.29'	225.00'	12°17'45"	N 56°18'22" E 48.19'
C61	136.58'	145.00'	53°58'12"	S 35°28'08" W 131.59'
C62	44.59'	30.00'	85°09'16"	N 51°03'40" E 40.60'
C63	98.91'	2990.76'	1°53'41"	S 85°24'51" E 98.90'
C64	123.18'	120.00'	58°48'56"	S 33°02'46" W 117.85'
C65	53.65'	250.00'	12°17'45"	N 56°18'22" E 53.55'
C66	43.64'	250.00'	10°00'04"	S 55°09'31" W 43.58'
C67	98.57'	250.00'	22°35'23"	S 71°27'14" W 97.93'
C68	93.02'	400.00'	13°19'25"	S 89°24'38" W 92.81'
C69	51.59'	189.82'	15°34'22"	S 85°51'07" W 51.43'
C70	43.32'	300.00'	8°16'24"	N 58°19'02" E 43.28'

CURVE TABLE				
CURVE	LENGTH	RADIUS	DELTA	LONG CHORD
C71	34.91'	200.00'	10°00'04"	N 55°09'31" E 34.87'
C72	57.90'	180.00'	18°25'45"	N 69°22'26" E 57.65'
C73	43.26'	335.00'	7°23'55"	N 86°26'53" E 43.23'
C74	42.24'	100.00'	24°12'11"	N 36°36'31" E 41.93'
C75	75.24'	85.00'	50°43'01"	S 77°47'15" W 72.81'
C76	78.24'	450.00'	9°57'44"	N 88°54'31" W 78.14'
C77	12.68'	18.00'	40°21'51"	S 47°12'24" W 12.42'
C78	12.27'	18.00'	39°03'49"	N 86°55'14" E 12.04'
C79	59.02'	275.00'	12°17'45"	N 56°18'22" E 58.90'
C109	100.00'	267.82'	21°23'37"	N 82°56'30" E 99.42'
C110	100.00'	3023.76'	1°53'41"	S 85°24'51" E 100.00'

LINE TABLE		
LINE	LENGTH	DIRECTION
L31	30.58'	N 78°21'59" E
L32	132.59'	N 78°21'59" E
L33	46.14'	S 74°57'04" E
L34	219.49'	S 86°21'42" E
L35	67.41'	S 62°27'14" W
L36	2.69'	S 50°09'29" W
L37	57.55'	S 50°09'29" W
L38	30.71'	S 60°09'33" W
L39	18.32'	S 60°09'33" W
L40	36.96'	S 82°44'56" W
L41	34.97'	S 82°44'56" W
L42	74.91'	N 83°55'39" W
L44	97.08'	S 83°55'39" E
L45	49.03'	N 60°09'33" E
L46	60.24'	N 50°09'29" E
L47	67.41'	N 62°27'14" E
L48	78.15'	S 86°21'42" E
L49	15.22'	N 3°38'18" E
L50	67.41'	N 62°27'14" E
L51	60.24'	N 50°09'29" E
L52	49.03'	N 60°09'33" E
L53	71.93'	N 82°44'56" E
L54	7.08'	S 6°04'21" W
L55	33.94'	S 4°31'42" W

LINE TABLE		
LINE	LENGTH	DIRECTION
L56	91.90'	S 21°42'04" E
L57	32.19'	N 86°21'42" W
L58	59.86'	N 3°38'18" E
L59	9.94'	N 62°27'14" E
L60	34.23'	S 82°55'19" E
L61	34.17'	N 50°09'29" E
L62	9.43'	N 60°09'33" E
L63	94.83'	S 16°36'43" E
L64	67.61'	S 73°23'17" W
L65	68.55'	N 21°42'04" W
L66	63.83'	N 26°07'19" W
L67	80.87'	S 11°13'37" E
L68	63.05'	S 73°23'17" W
L69	73.39'	N 16°36'43" W
L70	13.49'	N 60°09'33" E
L71	96.47'	N 12°00'14" E
L72	46.91'	S 33°40'21" W
L73	90.02'	S 8°26'06" W
L74	61.29'	N 81°33'54" W
L75	18.46'	N 11°13'37" W
L76	57.70'	N 12°00'14" E
L77	22.46'	N 82°44'56" E
L78	67.82'	S 8°00'55" E
L79	70.00'	N 83°55'39" W

LINE TABLE		
LINE	LENGTH	DIRECTION
L80	85.00'	N 6°04'21" E
L81	70.00'	S 83°55'39" E
L82	85.00'	S 6°04'21" W
L83	60.53'	S 3°03'27" W
L84	68.67'	S 11°17'23" E
L85	32.34'	S 36°59'11" W
L86	92.48'	N 53°00'49" W
L87	45.78'	N 6°04'21" E
L88	75.47'	S 83°55'39" E
L89	59.15'	S 68°59'41" E
L90	39.62'	S 74°07'11" E
L91	68.96'	S 1°38'01" E
L92	66.77'	S 78°21'59" W
L93	59.34'	N 11°17'23" W
L94	66.06'	S 17°54'49" E
L95	43.87'	N 44°55'24" W
L96	56.22'	N 4°47'44" W
L97	114.11'	S 84°28'01" E
L98	68.76'	N 85°12'16" E
L99	70.44'	S 11°38'01" E
L100	20.65'	S 45°04'36" W
L101	33.72'	S 74°03'46" W
L102	52.67'	N 19°20'13" W
L103	79.38'	S 87°12'29" W

LINE TABLE		
LINE	LENGTH	DIRECTION
L104	80.00'	N 12°46'40" W
L105	68.29'	N 45°50'30" E
L106	42.00'	N 87°12'29" E
L107	123.92'	S 2°47'31" E
L108	74.13'	N 23°18'36" E
L109	33.25'	N 17°23'11" W
L110	96.87'	N 17°23'11" W
L111	89.49'	N 77°13'20" E
L112	85.06'	S 12°46'40" E
L113	15.11'	S 23°18'36" W
L114	59.08'	N 71°02'16" E
L115	53.53'	S 83°55'39" E
L116	58.07'	N 7°15'04" W
L117	113.00'	N 72°36'49" W
L118	103.24'	S 17°23'11" E
L120	103.92'	N 72°14'41" E
L121	13.96'	S 74°00'19" E
L122	46.70'	S 74°00'19" E
L123	10.56'	N 74°03'46" E
L124	13.97'	S 86°25'04" E

LEGEND

- BOUNDARY LINE
- LOT LINE
- SECTION LINE
- QUARTER SECTION LINE
- COUNTY LINE
- ADJOINER DEED LINES
- NO ACCESS LINE
- AREA TIE LINES
- CALCULATED SECTION CORNER AS NOTED
- SECTION CORNER AS NOTED
- STREET MONUMENT
- SET 5/8" X 2" REBAR WITH PLASTIC CAP STAMPED "NOLTE ENG"
- BUILDING ENVELOPE
- P.U.E AND FUTURE EXTENSION OF HEARTWOOD DRIVE

**SUMMIT EDEN PHASE 1B
DEVELOPMENT PARCEL B, ROAD
PARCEL A AND LOTS 24 TO 34**

LOCATED IN THE SOUTH 1/2 OF SECTION 5,
SOUTHEAST 1/4 OF SECTION 6 AND
NORTH 1/2 OF SECTION 8 OF
TOWNSHIP 7 NORTH, RANGE 2 EAST, SALT LAKE
BASE AND MERIDIAN, WEBER COUNTY, UTAH

AREA PER COUNTY				
LOT #	WEBER COUNTY ACRES	CACHE COUNTY ACRES	WEBER COUNTY SQ.FT.	CACHE COUNTY SQ.FT.
ROAD PARCEL "A"	0.767	0.377	33,397	16,446
DEVELOPMENT PARCEL "B"	1.739	1.398	75,744	60,910
31	0.682	0.174	29,733	7,560

RECORDED #

STATE OF UTAH, COUNTY OF WEBER,
RECORDED AND FILED AT THE
REQUEST OF:

ENTRY NO: _____
DATE: _____ TIME: _____
BOOK: _____ PAGE: _____
FEE \$ _____

Sheet 3 of 3

NIVIS

NOLTE VERTICAL FIVE

5217 SOUTH STATE STREET, SUITE 300 MURRAY, UT 84107
801.743.1300 TEL 801.743.0300 FAX WWW.NOLTE.COM

WEBER COUNTY RECORDER