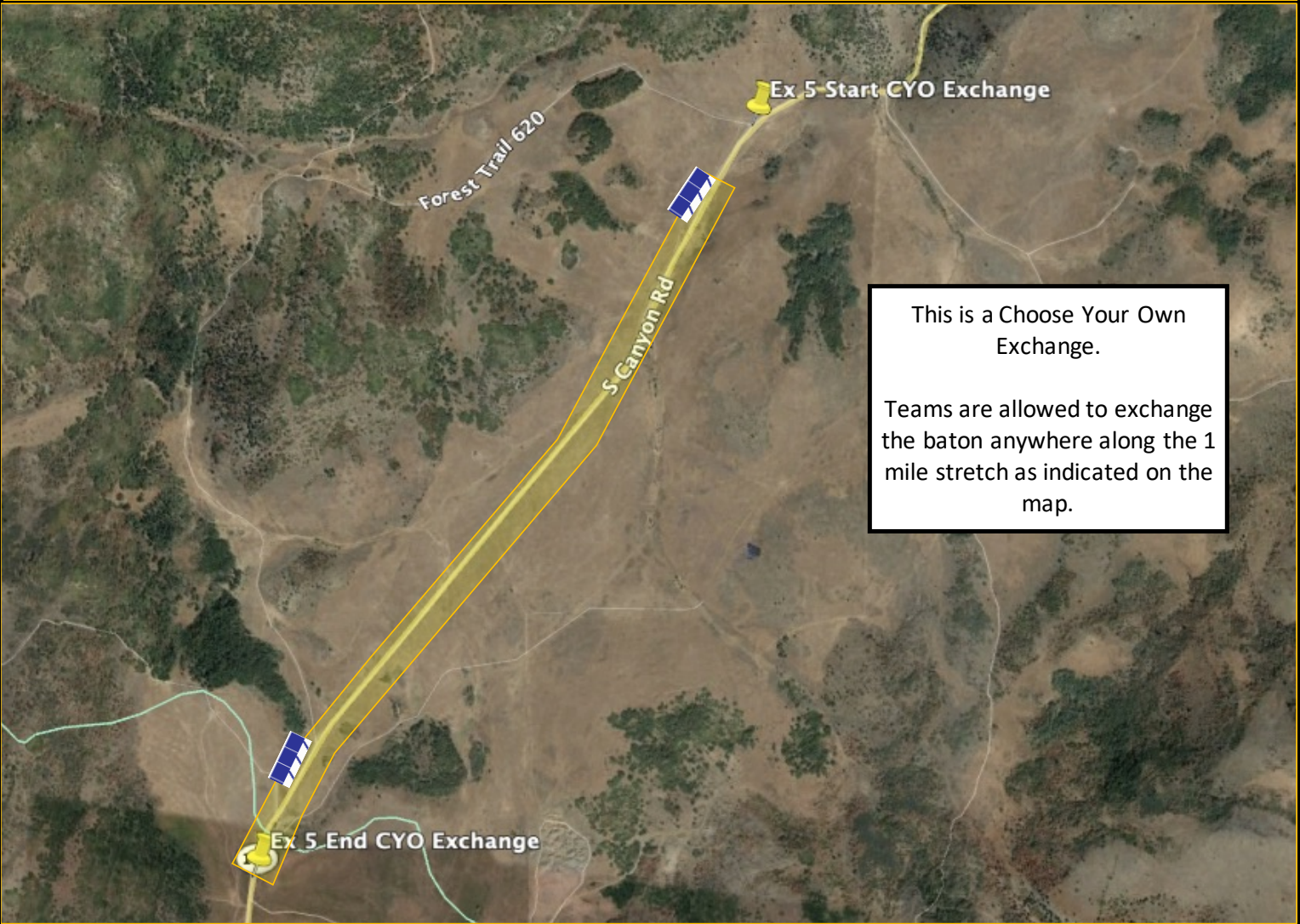



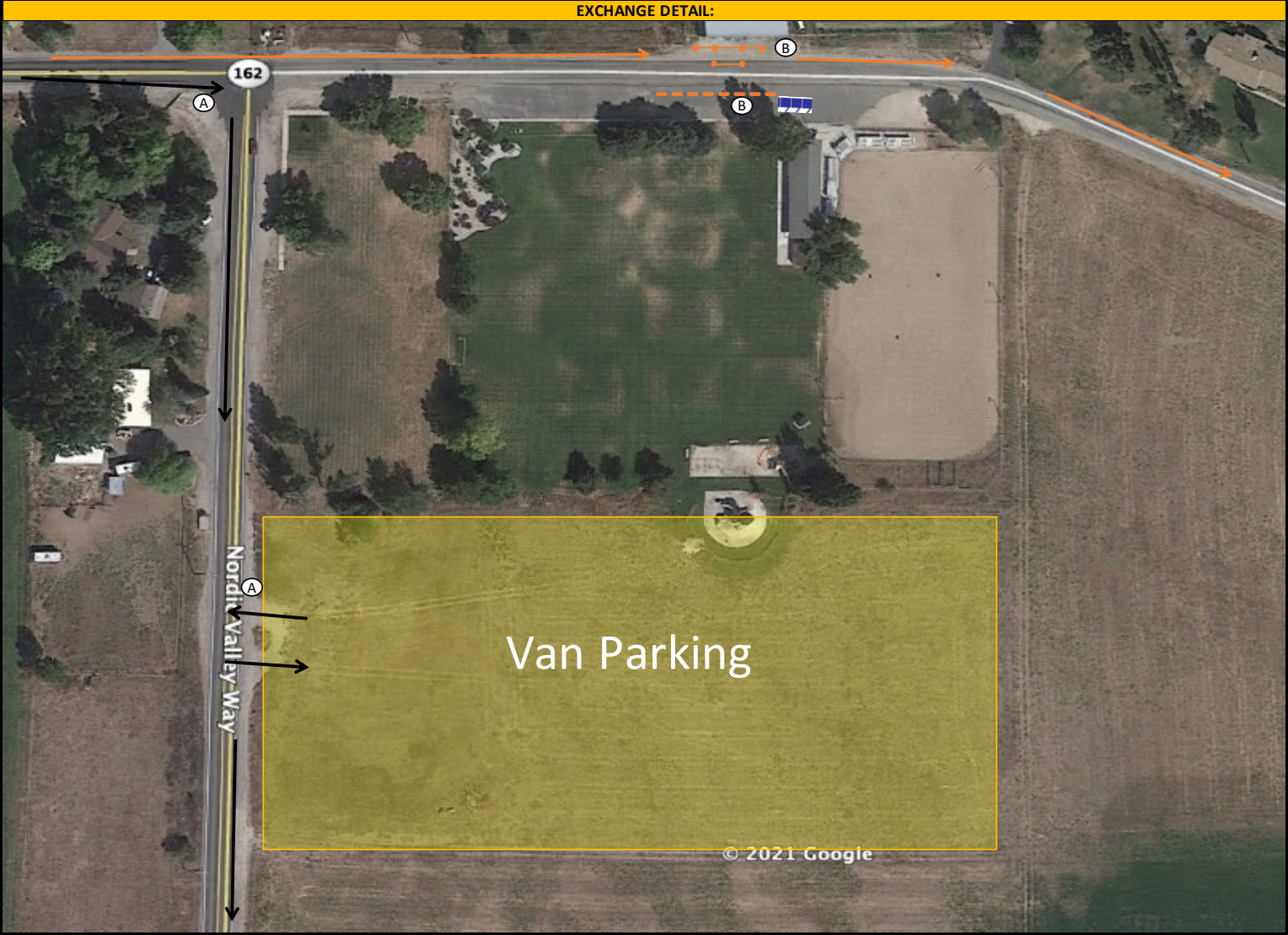


Ex 6 Venue:	Mountain Pass Road	Location:	Avon Pass Start: 41.412491048, -111.847291251				Venue Contact:	Ragnar Race Command - TEXT ONLY 661-RAGNAR-1 (661-724-6271)		Night Time Hours 8:15 PM to 6:00 AM
Max Parking Space	CYO	Volunteer Shift Time				Key: <div><div><div></div><div>←</div><div>↶</div><div>⌓</div></div><div><div>Cones & Tape</div><div>Van's Path</div><div>Runner's Path</div><div>Chute</div></div><div><div><div></div><div>Ⓐ</div><div></div></div><div><div>Toilets</div><div>Volunteer</div><div>Parking</div></div></div></div>				
Peak Parking Needs	107	Shift		Start	End					
Peak Time	12:45 PM	Shift 1								
Exchange Opens:	9:00 AM									
Exchange Closes:	2:30 PM									
Toilet Vendor	Honey Buckets	Incoming Runner Distance				7.4	Outgoing Runner Distance		6.9	
EXCHANGE DETAIL:										



DETAIL NOTES:	
CHUTE PLACEMENT	No Chute - exchange can happen anywhere along the 1 mile stretch
PARKING INSTRUCTIONS	Vans can parallel park anywhere along the 1 mile stretch of road.
TRAFFIC CONCERNS	Van may try to park immediately upon seeing the toilets. If there is back-up, Floaters should flag teams to continue down the road before pulling over.
VAN/RUNNER FLOW	N/A
PORT-A-POTTIE PLACEMENT	At the beginning and ending of mile stretch. Beginning: 41.412496, -111.847444, Ending: 41.396562, -111.861400
PRIVATE PROPERTY CONCERNS	None
OTHER DETAIL NOTES	

Ex 7	Park	Location:	Liberty Park N Hwy 162, Eden, UT 84310				Venue	Ragnar Race Command - TEXT ONLY 661-RAGNAR-1 (661-724-6271)		Night Time Hours
Venue:							Contact:			8:15 PM to 6:00 AM
Max Parking Space	600	Volunteer Shift Time				Key: ----- Cones & Tape ← Van's Path ← Runner's Path ●●● Chute		Toilets		
Peak Parking Needs	105	Shift	Start	End			Volunteer			
Peak Time	1:45 PM	Shift 1	9:30 AM	4:00 PM			Parking			
Exchange Opens:	9:00 AM									
Exchange Closes:	2:30 PM									
Toilet Vendor	Honey Buckets					Incoming Runner Distance	6.9	Outgoing Runner Distance	2.7	



DETAIL NOTES:	
CHUTE PLACEMENT	Placed on the runner side of the road. Only the next runner crosses to the chute. Any remaining team membes must wait behind cones and tape on the park side.
PARKING INSTRUCTIONS	All parking in the field- absolutely no parking on the road. Park Volunteer vehicles to start rows of parking. Should be plenty of space for team vehicles to park.
TRAFFIC CONCERNS	Road is open to local traffic. Please
VAN/RUNNER FLOW	Only the next active runner crosses to the chute. Make sure there is no vehicle traffic when runners cross. Vans must turn right on Nordic Valley Way. Place volunteer to flag vans this direction.
PORT-A-POTTIE PLACEMENT	Place as directed on layout, doors facing towards the park
PRIVATE PROPERTY CONCERNS	None
OTHER DETAIL NOTES	

VOLUNTEER DUTIES:		
A	Traffic: Direct and manage traffic in the parking lot and at entrances and exits. When slow, manage toilets and pick up trash. DO NOT STOP TRAFFIC ON PUBLIC ROADS AS it is illegal and unsafe.	2
B	Exchange Chute: Monitor chute - only let the next runner cross the road. Be mindful of local traffic driving through, runners must yield to all vehicles. Mark off timing of each team, announce approaching runners race numbers. When slow, manage toilets and trash.	3
		5

Ex 8	School	Location:	Snowcrest Jr High School 2755 N Hwy 162, Eden, UT 84310		Venue	Ragnar Race Command - TEXT ONLY	Night Time Hours
Venue:					Contact:	661-RAGNAR-1 (661-724-6271)	8:15 PM to 6:00 AM
Max Parking Space	91	Volunteer Shift Time		Key: <div style="display: flex; justify-content: space-around; align-items: flex-start;"> <div> <div style="border-bottom: 2px dashed orange; width: 20px; margin-bottom: 5px;"></div> <div style="margin-bottom: 5px;">Cones & Tape</div> <div style="border-bottom: 2px solid black; width: 20px; margin-bottom: 5px;"></div> <div style="margin-bottom: 5px;">Van's Path</div> <div style="border-bottom: 2px solid orange; width: 20px; margin-bottom: 5px;"></div> <div style="margin-bottom: 5px;">Runner's Path</div> <div style="border-bottom: 2px solid orange; width: 20px; margin-bottom: 5px;"></div> <div style="margin-bottom: 5px;">Chute</div> </div> <div> <div style="border: 1px solid blue; border-radius: 50%; width: 20px; height: 20px; display: flex; align-items: center; justify-content: center; margin-bottom: 5px;">A</div> <div style="margin-bottom: 5px;">Toilets</div> <div style="border: 1px solid yellow; width: 20px; height: 20px; display: flex; align-items: center; justify-content: center; margin-bottom: 5px;"></div> <div style="margin-bottom: 5px;">Volunteer</div> <div style="border: 1px solid yellow; width: 20px; height: 20px; display: flex; align-items: center; justify-content: center; margin-bottom: 5px;"></div> <div style="margin-bottom: 5px;">Parking</div> </div> </div>			
Peak Parking Needs	64	Shift	Start	End			
Peak Time	2:30 PM	Shift 1	10:30 AM	4:15 PM			
Exchange Opens:	11:00 AM						
Exchange Closes:	3:45 PM						
Toilet Vendor	Honey Buckets	Incoming Runner Distance	2.7	Outgoing Runner Distance	2.4		
EXCHANGE DETAIL:							
DETAIL NOTES:							
CHUTE PLACEMENT	Place chute on the grass away from the road and parking lot so runners stay on grass.						
PARKING INSTRUCTIONS	Use school parking lot						
TRAFFIC CONCERNS	Runners cross road by the track - help them cross safely. Runners must yield to traffic and only cross when the road is clear. DO NOT TRY TO STOP VEHICLE TRAFFIC.						
VAN/RUNNER FLOW	Runners will only cross vans at cross walk. Make sure they know that they must run back to the cross walk to start Leg 9.						
PORT-A-POTTIE PLACEMENT	Place in the west corner of the parking lot with the doors facing the grass.						
PRIVATE PROPERTY CONCERNS	None						
OTHER DETAIL NOTES	None						
VOLUNTEER DUTIES:							
(A)	Traffic: Direct and manage traffic in the parking lot and at entrances and exits. When slow, manage toilets and pick up trash. DO NOT STOP TRAFFIC ON PUBLIC ROADS AS it is illegal and unsafe.						3
(B)	Exchange Chute: Monitor chute and make sure baton exchange happens between double orange tape. Mark off timing of each team, announce approaching runners race numbers. When slow, manage toilets and trash.						2
							5

Ex 9	School	Location:	Valley Elementary School				Venue	Ragnar Race Command - TEXT ONLY				Night Time Hours
Venue:			5821 E 1900 N, Eden, UT 84310				Contact:	661-RAGNAR-1 (661-724-6271)				8:15 PM to 6:00 AM
Max Parking Space	86	Volunteer Shift Time				Key:	<div><div></div><div></div><div></div></div>	<div><div></div><div></div><div></div></div>	<div><div></div><div></div><div></div></div>	<div><div></div><div></div><div></div></div>	<div><div></div><div></div><div></div></div>	
Peak Parking Needs	63	Shift	Start	End	Cones & Tape							Toilets
Peak Time	2:53 PM	Shift 1	10:45 AM	4:45 PM	Van's Path							Volunteer
Exchange Opens:	11:15 AM				Runner's Path							Parking
Exchange Closes:	4:15 PM				Chute							
Toilet Vendor	Honey Buckets				Incoming Runner Distance	2.4	Outgoing Runner Distance	6.4				
EXCHANGE DETAIL:												




DETAIL NOTES:		
CHUTE PLACEMENT	Place chute along school sidewalk along the coned off section of the parking lot as depicted. Place cones to block vans from parking in exchange area.	
PARKING INSTRUCTIONS	Use school parking lot. Vans should stay in lined parking stalls	
TRAFFIC CONCERNS	None	
VAN/RUNNER FLOW	Runners should not have to cross van traffic, must follow sidewalk around parking lot.	
PORT-A-POTTIE PLACEMENT	Place in northeast corner of parking lot. Doors facing towards the school.	
PRIVATE PROPERTY CONCERNS	None	
OTHER DETAIL NOTES	None	
VOLUNTEER DUTIES:		
(A)	Traffic: Direct and manage traffic in the parking lot and at entrances and exits. When slow, manage toilets and pick up trash. DO NOT STOP TRAFFIC ON PUBLIC ROADS AS it is illegal and unsafe.	3
(B)	Exchange Chute: Monitor chute and make sure baton exchange happens between double orange tape. Mark off timing of each team, announce approaching runners race numbers. When slow, manage toilets and trash.	2
		5

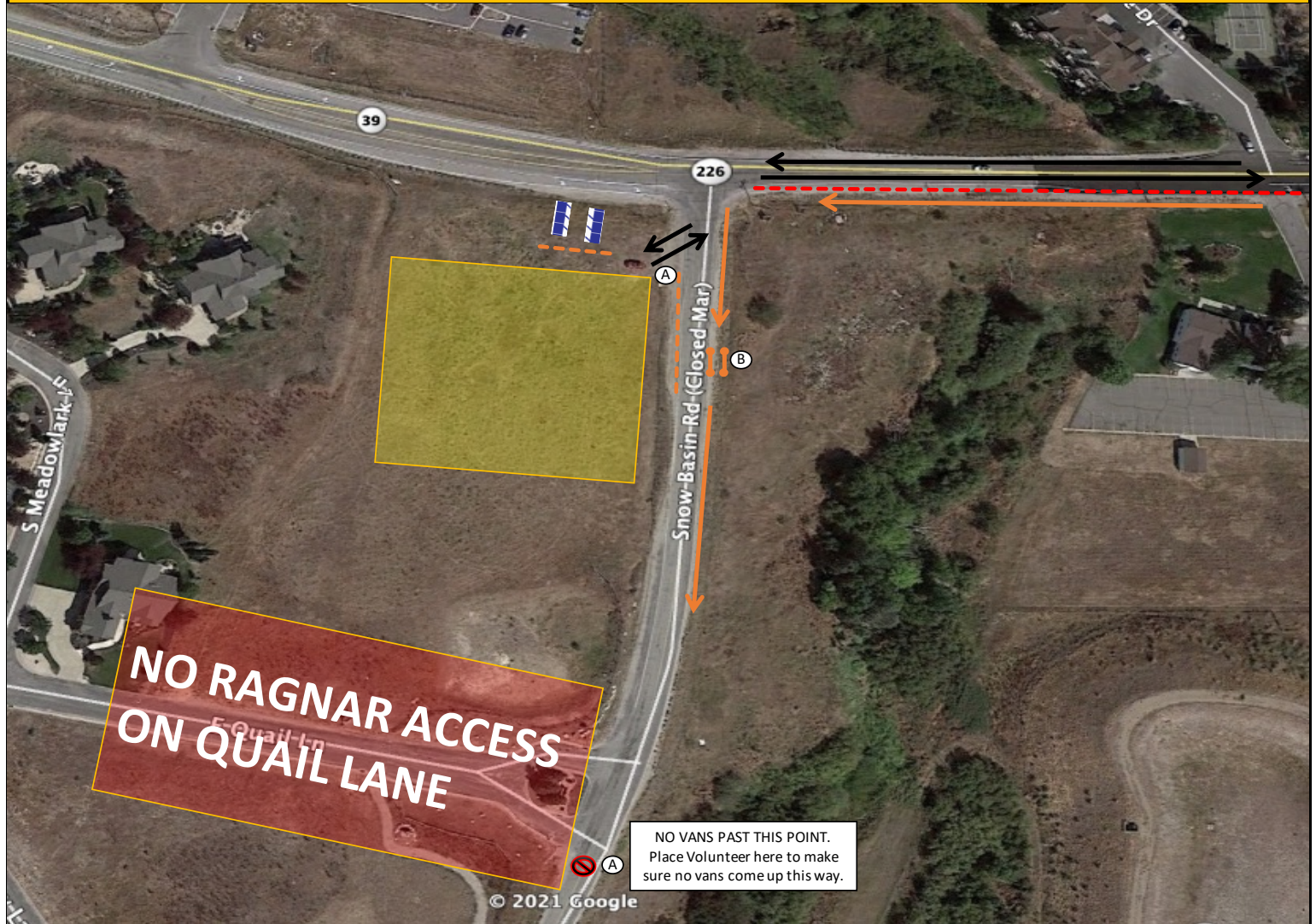
Ex 10 Venue:	Town Park	Location:	Huntsville Park 240110032, Huntsville, UT 84317				Venue Contact:	Ragnar Race Command - TEXT ONLY 661-RAGNAR-1 (661-724-6271)		Night Time Hours	8:15 PM to 6:00 AM
Max Parking Space	100	Volunteer Shift Time				Key: <div><div><div></div><div>←</div><div>↶</div><div>⋮</div></div><div><div>Cones & Tape</div><div>Van's Path</div><div>Runner's Path</div><div>Chute</div></div><div><div><div></div><div>Ⓐ</div><div></div></div><div><div>Toilets</div><div>Volunteer</div><div>Parking</div></div></div></div>					
Peak Parking Needs	127	Shift	Start	End							
Peak Time	3:30 PM	Shift 1	11:45 AM	5:45 PM							
Exchange Opens:	12:15 PM										
Exchange Closes:	5:15 PM										
Toilet Vendor	Honey Buckets				Incoming Runner Distance		6.4	Outgoing Runner Distance		2.7	
EXCHANGE DETAIL:											



DETAIL NOTES:		
CHUTE PLACEMENT	Place chute in front of pavillion, as far into the grass/cement area as possible as depicted. Add a line of coning along street to keep runners out of roadway.	
PARKING INSTRUCTIONS	Most parking should stay on 7400 E. Use orange flags to waive vehicles to park here first.	
TRAFFIC CONCERNS	Vehicles should not park on the south side of the park. That needs to be clear for runners.	
VAN/RUNNER FLOW	Make sure runners yield to vehicle traffic when crossing intersection before exchange.	
PORT-A-POTTIE PLACEMENT	Toilets placed in street parking on southwest corner of the park. Doors facing towards the field	
PRIVATE PROPERTY CONCERNS	None	
OTHER DETAIL NOTES	None	
VOLUNTEER DUTIES:		
(A)	Traffic: Direct and manage traffic in the parking lot and at entrances and exits. When slow, manage toilets and pick up trash. DO NOT STOP TRAFFIC ON PUBLIC ROADS AS it is illegal and unsafe.	3
(B)	Exchange Chute: Monitor chute and make sure baton exchange happens between double orange tape. Mark off timing of each team, announce approaching runners race numbers. When slow, manage toilets and trash.	2
		5

Ex 11	Field	Location:	Farm Field			Venue	Ragnar Race Command - TEXT ONLY			Night Time Hours
Venue:			Hwy 39, Huntsville - 41.249124121, -111.79398396			Contact:	661-RAGNAR-1 (661-724-6271)			8:15 PM to 6:00 AM
Max Parking Space	300	Volunteer Shift Time			Key: 					
Peak Parking Needs	92	Shift	Start	End						
Peak Time	4:48 PM	Shift 1	1:00 PM	7:15 PM						
Exchange Opens:	1:30 PM									
Exchange Closes:	6:45 PM									
Toilet Vendor	Honey Buckets			Incoming Runner Distance		4.6	Outgoing Runner Distance		7.3	

EXCHANGE DETAIL:



DETAIL NOTES:

CHUTE PLACEMENT	Place chute on the shoulder as far off the road as possible
PARKING INSTRUCTIONS	No street parking- all vans should park in the field. Volunteers can park their cars to get the first parking row started. Have the team vehicles follow suit to fill in the remaining rows.
TRAFFIC CONCERNS	Old Snowbasin Road is closed to Ragnar van traffic. Vans must proceed to Snowbasin via Trappers Loop.
VAN/RUNNER FLOW	Runners approach exchange on the south side of SR-39. The runners need to continue along the east side of Old Snowbasin Road. Place chute on east side of the road. Teams should be corralled on the west side of the road behind the cones and tape. Only the next runner should cross to the chute.
PORT-A-POTTIE PLACEMENT	Place in northeast corner of the lot as depicted. Doors facing each other.
PRIVATE PROPERTY CONCERNS	Do Not let vehicles pull out of field onto Quail Lane. Have everyone enter and Exit from Old Snowbasin Road.
OTHER DETAIL NOTES	None

VOLUNTEER DUTIES:

(A)	Traffic: Direct and manage traffic in the parking lot and at entrances and exits. When slow, manage toilets and pick up trash. DO NOT STOP TRAFFIC ON PUBLIC ROADS AS it is illegal and unsafe.	3
(B)	Exchange Chute: Monitor chute and make sure baton exchange happens between double orange tape. Mark off timing of each team, announce approaching runners race numbers. When slow, manage toilets and trash.	2
		5

FINISH LINE	Ski Resort	Location:	Snowbasin Resort	3925 Snow Basin Rd, Huntsville, UT 84317	Contact:	Ragnar Race Command - TEXT ONLY	661-RAGNAR-1 (661-724-6271)	Night Time Hours
Max Parking Space	632	Volunteer Shift Time	Start	End	Toilets	Orange Ragnar Tent		8:15 PM to 6:00 AM
Peak Parking Needs	168	Finish Line	2:30 PM	10:30 PM	ADA Toilet	Trash Dumpster/Recycle		
Peak Time	6:20 PM	Gear	7:00 PM	11:00 PM	Power Access	Medic		
		Trailer	4:00 PM	11:00 PM	Water Access	Ragnar Semi Trailers		
					Chute			

EXCHANGE OVERVIEW:



FINISH LINE	Ski Resort	Location:	Snowbasin Resort 3925 Snow Basin Rd, Huntsville, UT 84317	Contact:	Ragnar Race Command - TEXT ONLY 661-RAGNAR-1 (661-724-6271)	Night Time Hours
Max Parking Space	632	Volunteer Shift Time	Shift Start End	Key: Parking	Toilets	8:15 PM to 6:00 AM
Peak Parking Needs	168	Shift 1	2:30 PM 10:30 PM	Cones & Tape	Orange Ragnar Tent	Chute
Peak Time	0.763888889	Shift 2	7:00 PM 11:00 PM	Van's Path	Dumpster/Recycle	Volunteer
		Shift 3	4:00 PM 11:00 PM	Runner's Path	Medic	
				ADA Toilet		
				Power Access		
				Water Access		



EXCHANGE NOTES	
CHUTE PLACEMENT	Runners will run around Earl's lodge and finish on the grass south of the lodge. Cone a line around the east side of the building to guide runners into the chute. Teams can wait for the incoming runner by the lift and run in together from that point. Start the chute right after the gravel area past the lift.
PARKING INSTRUCTIONS	Teams Can park anywhere in the upper lots (A, B, C, D, E)
TRAFFIC CONCERNS	None
VAN/RUNNER FLOW	Runners will cross the road at the access point to Parking A. Station volunteers there to ensure they are aware of vehicle traffic. Ragnar traffic should not be crossing runners, and should be minimal.
PORT-A-POTTIE PLACEMENT	Place in Lot A on the east side
PRIVATE PROPERTY CONCERNS	None
OTHER DETAIL NOTES	Set Up - Allowed to drive on plaza Friday during set up. Cannot drive Saturday - Gondola open to the public, and there will be pedestrian traffic.

OTHER NOTES					
Toilets	Honey Buckets	Incoming leg distance	7.3	Exchange Opens:	3:00 PM
Dumpster	Republic Services			Exchange Closes:	9:00 PM
VOLUNTEER DUTIES:					
A	Parking: Manage parking flow, when slow, manage toilets & clean up exchange. Use orange flags and batons to direct support vehicles into appropriate lots. Fill East lot first.				4
B	Assist Announcer / Timer. 1 person receives next team finishing info from radio. 1 person assists with marking teams for timing.				2
C	Radio: Stand (or sit) about 200 yards before exchange and radio incoming runner to volunteer B. May be stationed further up the road than depicted on layout				1
D	Medal Tent - Pass out medals to teams as they cross the finish line				2
E	Manage Ragnar HQ & Flag Return				2
F	Manage Recovery Zone area				2
G	Sweep for trash, direct runners to areas within the finish line, check on water station				1
					14