

GATEWAY ESTATES SUBDIVISION PHASE 1

PART OF THE SOUTH HALF OF SECTION 11, TOWNSHIP 6 NORTH, RANGE 2 EAST, SALT LAKE BASE AND MERIDIAN, U.S. SURVEY
WEBER COUNTY, UTAH
MARCH, 2022

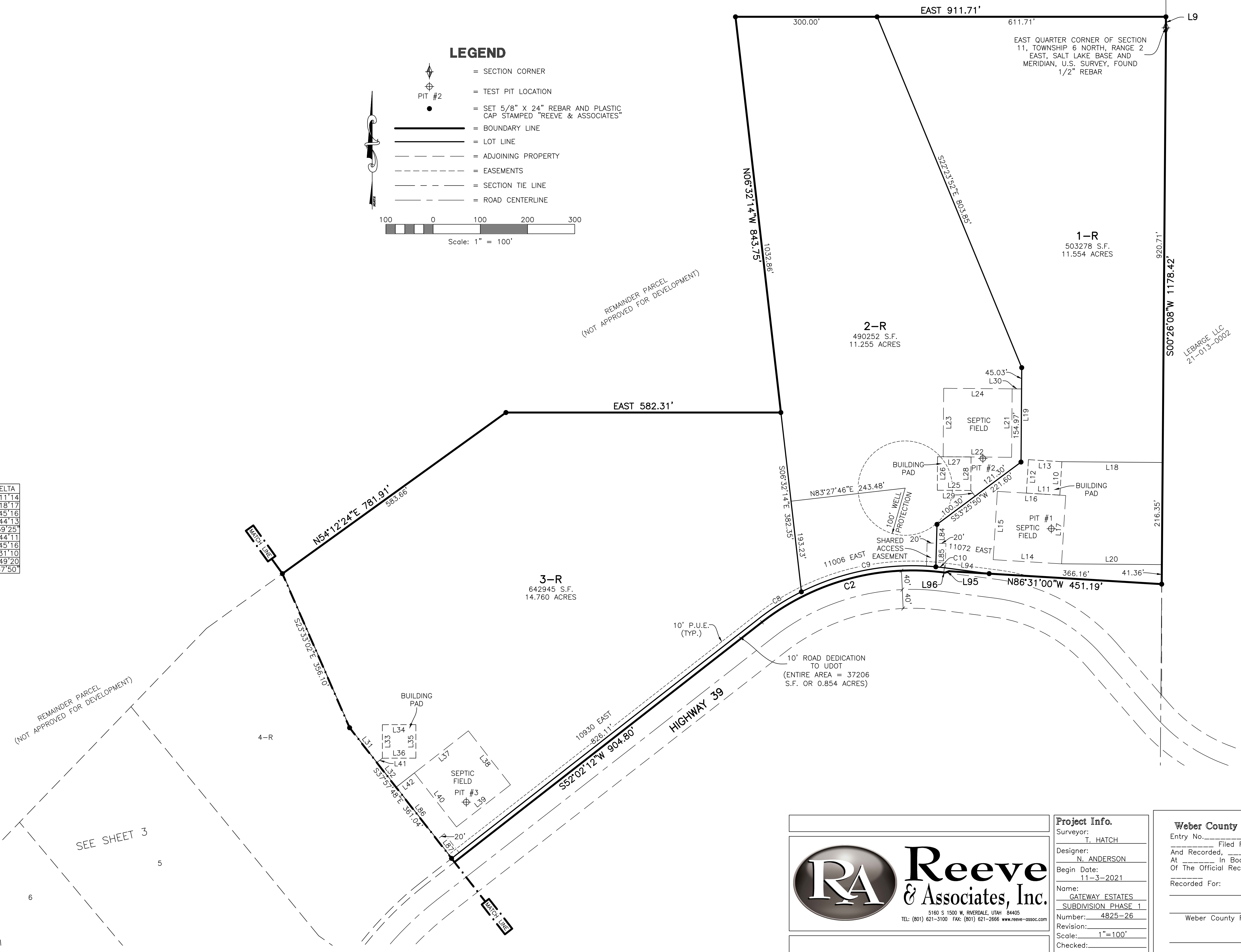
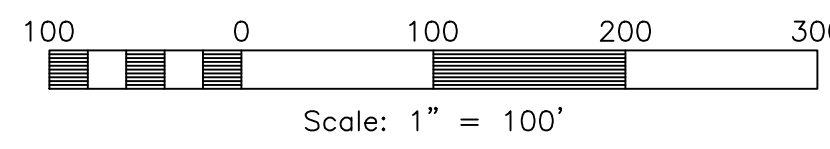
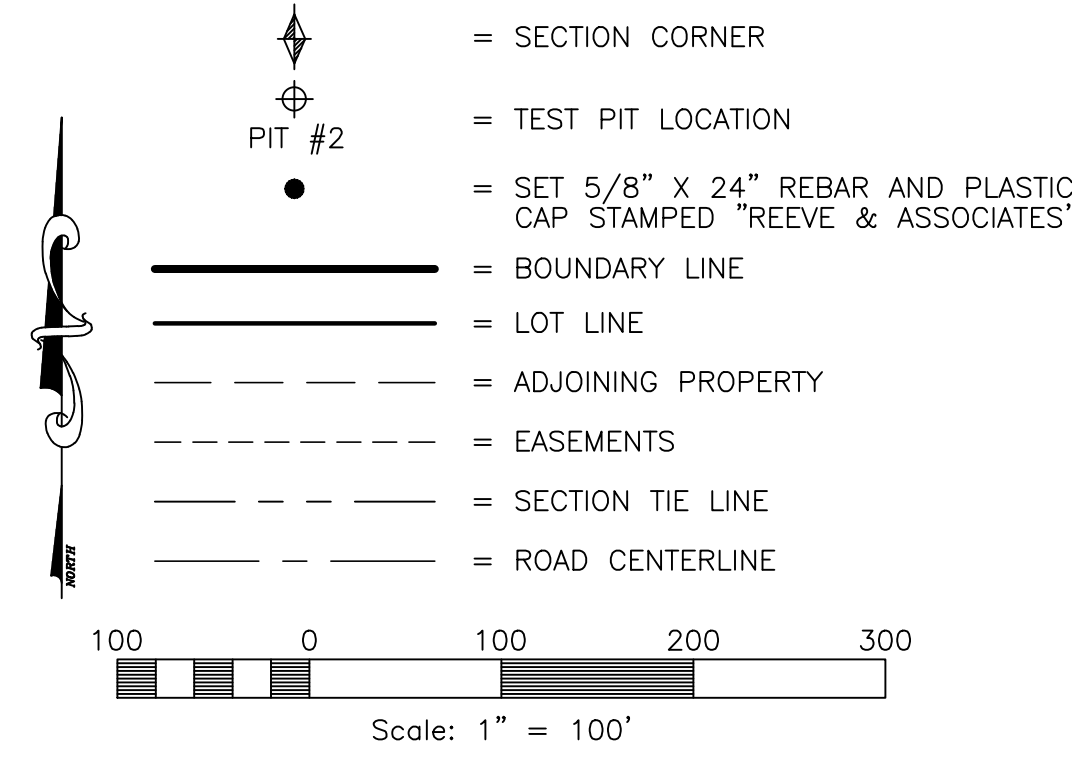
LINE TABLE

LINE	BEARING	DISTANCE	LINE	BEARING	DISTANCE
L1	S64°43'04"E	68.00'	L50	N39°18'27"W	71.00'
L2	N25°16'56"E	68.98'	L51	N50°41'33"E	20.00'
L3	S06°52'15"W	258.74'	L52	S50°05'00"W	145.00'
L4	S17°41'17"E	220.35'	L53	N39°55'00"W	145.00'
L5	S01°11'41"W	91.86'	L54	N50°05'00"E	145.00'
L6	S13°12'48"E	187.85'	L55	S39°55'00"E	145.00'
L7	N83°27'11"E	199.73'	L56	S27°49'28"E	145.00'
L8	N83°27'11"E	159.09'	L57	S62°10'32"W	145.00'
L9	S00°09'20"E	23.41'	L58	N27°49'28"W	145.00'
L10	S03°29'00"W	71.00'	L59	N62°10'32"E	145.00'
L11	N86°31'00"W	71.00'	L60	S50°05'00"W	109.72'
L12	N03°29'00"E	71.00'	L61	S05°55'48"E	145.00'
L13	S86°31'00"E	71.00'	L62	S84°04'12"W	145.00'
L14	N86°31'00"W	145.00'	L63	N05°55'48"W	145.00'
L15	N03°29'00"E	145.00'	L64	N84°04'12"E	145.00'
L16	S86°31'00"E	145.00'	L65	S84°04'12"W	51.91'
L17	S03°29'00"W	145.00'	L66	N84°04'12"E	145.00'
L18	N89°33'52"W	213.43'	L67	S05°55'48"E	145.00'
L19	N00°26'08"E	200.00'	L68	S84°04'12"W	145.00'
L20	N89°33'52"W	212.55'	L69	N05°55'48"W	145.00'
L21	S00°26'08"W	145.00'	L70	S84°04'12"W	28.00'
L22	N89°33'52"W	145.00'	L71	N50°41'33"E	100.52'
L23	N00°26'08"E	145.00'	L72	N84°04'12"E	99.99'
L24	S89°33'52"E	145.00'	L73	N00°00'00"W	100.00'
L25	N89°33'52"W	71.00'	L74	N25°16'56"E	145.00'
L26	N00°26'08"E	71.00'	L75	S64°43'04"E	145.00'
L27	N89°33'52"W	71.00'	L76	S25°16'56"W	145.00'
L28	S00°26'08"W	71.00'	L77	N64°43'04"W	145.00'
L29	N36°34'10"W	15.00'	L78	S64°43'04"E	30.00'
L30	N89°33'52"W	20.00'	L79	S25°16'56"W	145.00'
L31	S37°57'48"E	93.49'	L80	N64°43'04"W	145.00'
L32	S37°57'48"E	66.38'	L81	N25°16'56"E	145.00'
L33	N00°04'27"W	71.00'	L82	S64°43'04"E	145.00'
L34	N89°55'33"E	71.00'	L83	N64°43'04"W	30.00'
L35	S00°04'27"E	71.00'	L84	S01°32'52"W	39.98'
L36	S89°55'33"W	71.00'	L85	S01°32'52"W	50.00'
L37	N52°02'12"E	145.00'	L86	S37°57'48"E	141.17'
L38	S37°57'48"E	145.00'	L87	S37°57'48"E	50.00'
L39	S52°02'12"W	145.00'	L88	S54°43'48"E	80.00'
L40	N37°57'48"W	145.00'	L89	S54°43'48"E	96.47'
L41	N52°02'12"E	15.00'	L90	S54°41'49"E	30.00'
L42	N52°02'12"E	49.18'	L91	S54°41'48"E	50.00'
L43	N50°41'33"E	145.00'	L92	S07°44'19"E	40.79'
L44	S39°18'27"E	145.00'	L93	S07°44'19"E	21.21'
L45	S50°41'33"W	145.00'	L94	S82°34'48"E	95.77'
L46	N39°18'27"W	145.00'	L95	S69°59'00"W	9.03'
L47	N50°41'33"E	71.00'	L96	N82°34'48"W	2.91'
L48	S39°18'27"E	71.00'			
L49	S50°41'33"W	71.00'			

CURVE TABLE

#	RADIUS	ARC LENGTH	CHD LENGTH	TANGENT	CHD BEARING	DELTA
C1	183.00'	166.68'	160.98'	89.63'	N00°48'41"W	52°11'14"
C2	518.30'	409.83'	399.24'	216.30'	S74°41'21"W	45°18'17"
C3	756.80'	221.31'	220.52'	111.45'	S43°38'51"W	16°45'16"
C4	533.70'	453.98'	440.41'	241.74'	S59°42'06"W	48°44'13"
C5	117.00'	2.02'	2.02'	1.01'	N26°24'35"W	0°59'25"
C6	523.70'	445.46'	432.16'	237.21'	N59°42'07"E	48°44'11"
C7	766.80'	224.23'	223.43'	112.92'	N43°38'51"E	16°45'16"
C8	528.30'	106.22'	106.04'	53.29'	N57°47'47"E	11°31'10"
C9	528.30'	293.42'	289.66'	150.60'	N79°28'02"E	31°49'20"
C10	528.30'	18.11'	18.11'	9.05'	S83°38'23"E	1°57'50"

LEGEND



SEE SHEET 3

Reeve & Associates, Inc.

5160 S 1500 W, RIVERDALE, UTAH 84405
TEL: (801) 621-3100 FAX: (801) 621-2666 www.reeve-assoc.com

Project Info.	
Surveyor:	T. HATCH
Designer:	N. ANDERSON
Begin Date:	11-3-2021
Name:	GATEWAY ESTATES SUBDIVISION PHASE 1
Number:	4825-26
Revision:	
Scale:	1"=100'
Checked:	

Weber County Recorder	
Entry No. _____	Fee Paid _____
And Recorded, _____	Filed For Record _____
At _____	In Book _____
Of The Official Records, Page _____	
Recorded For:	_____
_____	Weber County Recorder
_____	Deputy.

Reeve & Associates, Inc. - Solutions You Can Build On

Reeve & Associates, Inc. - Solutions You Can Build On

GATEWAY ESTATES SUBDIVISION PHASE 1

PART OF THE SOUTH HALF OF SECTION 11, TOWNSHIP 6 NORTH, RANGE 2 EAST, SALT LAKE BASE AND MERIDIAN, U.S. SURVEY
WEBER COUNTY, UTAH
MARCH, 2022

LINE TABLE

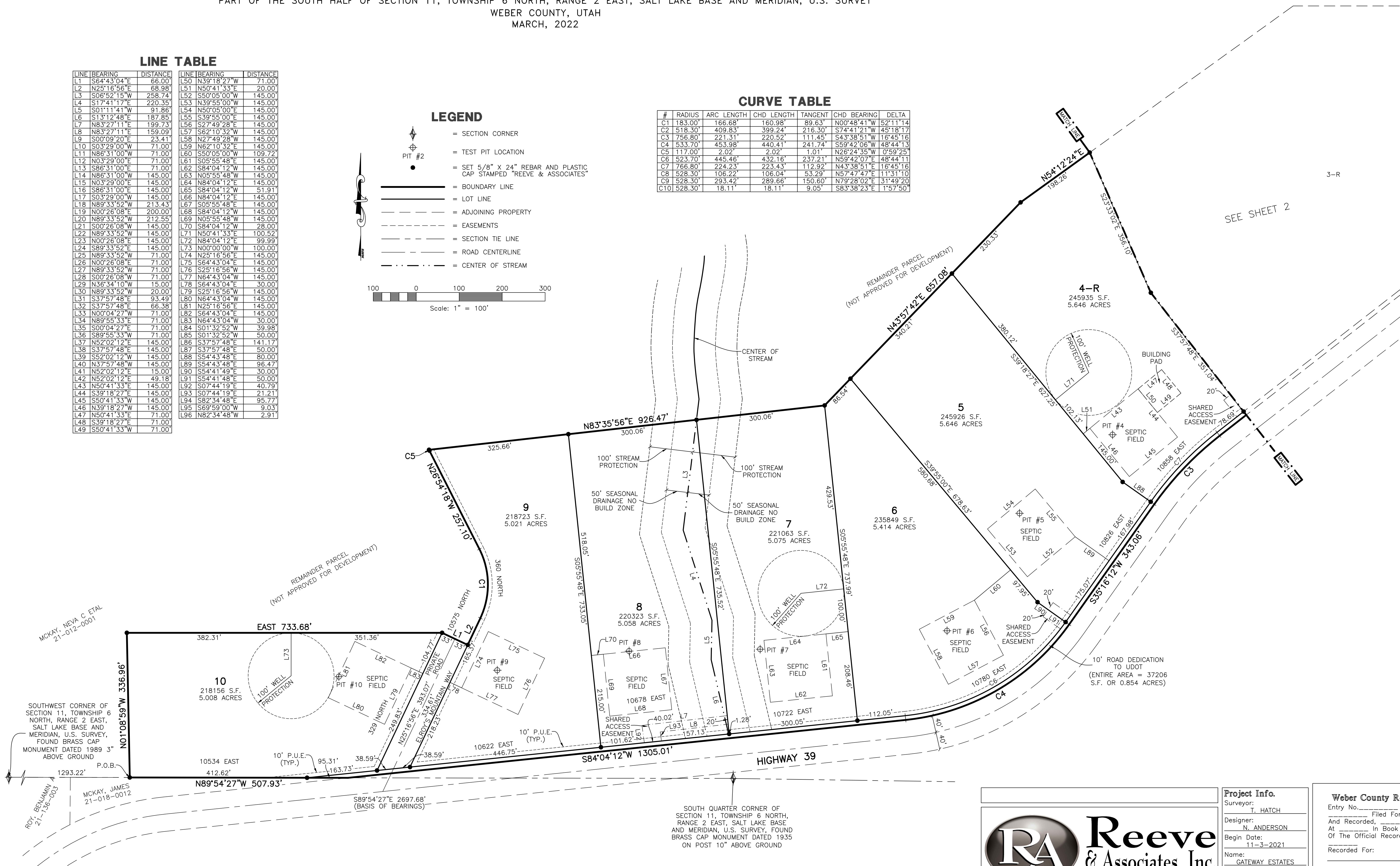
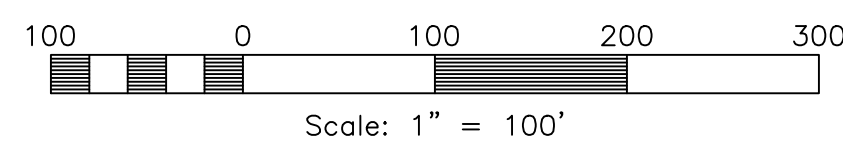
LINE	BEARING	DISTANCE	LINE	BEARING	DISTANCE
L1	S64°43'04"E	66.00	L50	N39°18'27"W	71.00
L2	N25°16'56"E	68.98	L51	N50°41'33"E	20.00
L3	S06°42'15"W	258.74	L52	S50°05'00"W	145.00
L4	S17°41'17"E	220.35	L53	N39°55'00"W	145.00
L5	S01°11'41"W	91.86	L54	N50°05'00"E	145.00
L6	S13°12'48"E	187.85	L55	S39°55'00"E	145.00
L7	N83°27'11"E	199.73	L56	S27°49'28"E	145.00
L8	N83°27'11"E	159.09	L57	S62°10'32"W	145.00
L9	S00°09'20"E	23.41	L58	N27°49'28"W	145.00
L10	S03°29'00"W	71.00	L59	N62°10'32"E	145.00
L11	N86°31'00"W	71.00	L60	S50°05'00"W	109.72
L12	N03°29'00"E	71.00	L61	S05°55'48"E	145.00
L13	S86°31'00"E	71.00	L62	S84°04'12"W	145.00
L14	N86°31'00"W	145.00	L63	N05°55'48"W	145.00
L15	N03°29'00"E	145.00	L64	N84°04'12"E	145.00
L16	S86°31'00"E	145.00	L65	S84°04'12"W	51.91
L17	S03°29'00"W	145.00	L66	N84°04'12"E	145.00
L18	N89°33'52"W	213.43	L67	S05°55'48"E	145.00
L19	N00°26'08"E	200.00	L68	S84°04'12"W	145.00
L20	N89°33'52"W	212.55	L69	N05°55'48"W	145.00
L21	S00°26'08"W	145.00	L70	S84°04'12"W	28.00
L22	N89°33'52"W	145.00	L71	N50°41'33"E	100.52
L23	N00°26'08"E	145.00	L72	N84°04'12"E	99.99
L24	S89°33'52"E	145.00	L73	N00°00'00"W	100.00
L25	N89°33'52"W	71.00	L74	N25°16'56"E	145.00
L26	N00°26'08"E	71.00	L75	S64°43'04"E	145.00
L27	N89°33'52"W	71.00	L76	S25°16'56"W	145.00
L28	S00°26'08"W	71.00	L77	N64°43'04"W	145.00
L29	N36°34'10"W	15.00	L78	S64°43'04"E	30.00
L30	N89°33'52"W	20.00	L79	S25°16'56"W	145.00
L31	S37°57'48"E	93.49	L80	N64°43'04"W	145.00
L32	S37°57'48"E	66.38	L81	N25°16'56"E	145.00
L33	N00°04'27"W	71.00	L82	S64°43'04"E	145.00
L34	N89°55'33"E	71.00	L83	N64°43'04"W	30.00
L35	S00°04'27"E	71.00	L84	S01°32'52"W	39.98
L36	S89°55'33"W	71.00	L85	S01°32'52"W	50.00
L37	N52°02'12"E	145.00	L86	S37°57'48"E	141.17
L38	S37°57'48"E	145.00	L87	S37°57'48"E	50.00
L39	S52°02'12"W	145.00	L88	S54°43'48"E	80.00
L40	N37°57'48"W	145.00	L89	S54°43'48"E	96.47
L41	N52°02'12"E	15.00	L90	S54°41'49"E	30.00
L42	N52°02'12"E	49.18	L91	S54°41'48"E	50.00
L43	N50°41'33"E	145.00	L92	S07°44'19"E	40.79
L44	S39°18'27"E	145.00	L93	S07°44'19"E	21.21
L45	S50°41'33"W	145.00	L94	S82°34'48"E	95.77
L46	N39°18'27"W	145.00	L95	S69°59'00"W	9.03
L47	N50°41'33"E	71.00	L96	N82°34'48"W	2.91
L48	S39°18'27"E	71.00			
L49	S50°41'33"W	71.00			

CURVE TABLE

#	RADIUS	ARC LENGTH	CHD LENGTH	TANGENT	CHD BEARING	DELTA
C1	183.00'	166.68'	160.98'	89.63'	N00°48'41"W	52°11'14"
C2	518.30'	409.83'	399.24'	216.30'	S74°41'21"W	45°18'17"
C3	756.80'	221.31'	220.52'	111.45'	S43°38'51"W	16°45'16"
C4	533.70'	453.98'	440.41'	241.74'	S59°42'06"W	48°44'13"
C5	117.00'	2.02'	2.02'	1.01'	N28°24'35"W	0°59'25"
C6	523.70'	445.46'	432.16'	237.21'	N59°42'07"E	48°44'11"
C7	766.80'	224.23'	223.43'	112.92'	N43°38'51"E	16°45'16"
C8	528.30'	106.22'	106.04'	53.29'	N57°47'47"E	11°31'10"
C9	528.30'	293.42'	289.66'	150.60'	N79°28'02"E	31°49'20"
C10	528.30'	18.11'	18.11'	9.05'	S83°38'23"E	1°57'50"

LEGEND

- = SECTION CORNER
- = TEST PIT LOCATION
- = SET 5/8" X 24" REBAR AND PLASTIC CAP STAMPED "REEVE & ASSOCIATES"
- = BOUNDARY LINE
- = LOT LINE
- = ADJOINING PROPERTY
- = EASEMENTS
- = SECTION TIE LINE
- = ROAD CENTERLINE
- = CENTER OF STREAM



SEE SHEET 2

3-R

10' ROAD DEDICATION TO UDOT (ENTIRE AREA = 37206 S.F. OR 0.854 ACRES)

SOUTH QUARTER CORNER OF SECTION 11, TOWNSHIP 6 NORTH, RANGE 2 EAST, SALT LAKE BASE AND MERIDIAN, U.S. SURVEY, FOUND BRASS CAP MONUMENT DATED 1935 ON POST 10' ABOVE GROUND

Project Info.
 Surveyor: T. HATCH
 Designer: N. ANDERSON
 Begin Date: 11-3-2021
 Name: GATEWAY ESTATES SUBDIVISION PHASE 1
 Number: 4825-26
 Revision:
 Scale: 1"=100'
 Checked:

Weber County Recorder
 Entry No. _____ Fee Paid _____
 And Recorded, _____
 At _____ In Book _____
 Of The Official Records, Page _____
 Recorded For: _____
 Weber County Recorder
 Deputy.

