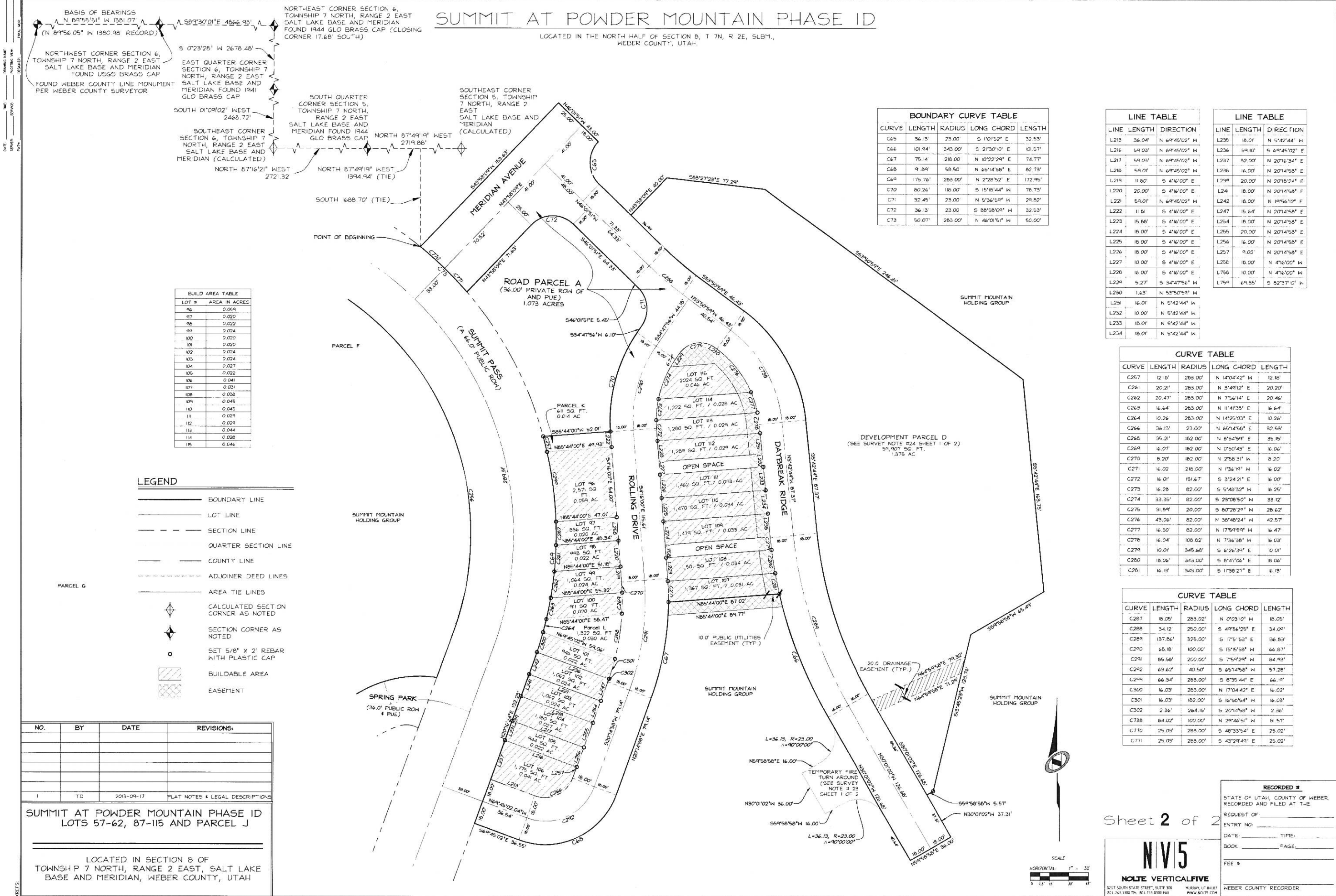


Exhibit A

SUMMIT AT POWDER MOUNTAIN PHASE ID

LOCATED IN THE NORTH HALF OF SECTION 8, T 7N, R 2E, 56BM., WEBER COUNTY, UTAH.



CURVE	LENGTH	RADIUS	LONG CHORD	LENGTH
C65	36.13	23.00	S 1°01'52" E	32.53'
C66	101.94'	343.00'	S 21°30'10" E	101.57'
C67	75.14'	218.00'	N 10°22'29" E	74.77'
C68	9.89'	58.50'	N 65°14'58" E	82.73'
C69	175.76'	283.00'	N 2°28'52" E	172.95'
C70	80.26'	118.00'	S 15°18'44" W	78.73'
C71	32.45'	23.00'	N 5°36'59" W	29.82'
C72	36.13'	23.00'	S 88°58'09" W	32.53'
C73	50.07'	283.00'	N 46°10'51" W	50.00'

LINE	LENGTH	DIRECTION
L213	36.04'	N 69°45'02" W
L216	59.03'	N 69°45'02" W
L217	59.03'	N 69°45'02" W
L218	59.01'	N 69°45'02" W
L219	11.80'	S 4°16'00" E
L220	20.00'	S 4°16'00" E
L221	59.01'	N 69°45'02" W
L222	11.81'	S 4°16'00" E
L223	15.88'	S 4°16'00" E
L224	18.00'	S 4°16'00" E
L225	18.00'	S 4°16'00" E
L226	18.00'	S 4°16'00" E
L227	10.00'	S 4°16'00" E
L228	16.00'	S 4°16'00" E
L229	5.27'	S 34°47'56" W
L230	1.63'	N 53°50'59" W
L231	16.01'	N 5°42'44" W
L232	10.00'	N 5°42'44" W
L233	16.01'	N 5°42'44" W
L234	18.01'	N 5°42'44" W

LINE	LENGTH	DIRECTION
L235	18.01'	N 5°42'44" W
L236	59.10'	S 69°45'02" E
L237	32.00'	N 20°16'34" E
L238	16.00'	N 20°14'58" E
L239	20.00'	N 20°16'24" E
L241	18.00'	N 20°14'58" E
L242	18.00'	N 19°56'10" E
L247	15.64'	N 20°14'58" E
L254	18.00'	N 20°14'58" E
L255	20.00'	N 20°14'58" E
L256	16.00'	N 20°14'58" E
L257	9.00'	N 20°14'58" E
L258	18.00'	N 4°16'00" W
L759	10.00'	N 4°16'00" W
L759	69.95'	S 82°37'01" W

LOT #	AREA IN ACRES
96	0.059
97	0.020
98	0.022
99	0.024
100	0.020
101	0.020
102	0.024
103	0.024
104	0.027
105	0.022
106	0.041
107	0.031
108	0.036
109	0.045
110	0.045
111	0.029
112	0.029
113	0.044
114	0.028
115	0.046

- LEGEND**
- BOUNDARY LINE
 - LOT LINE
 - - - SECTION LINE
 - - - QUARTER SECTION LINE
 - - - COUNTY LINE
 - - - ADJOINER DEED LINES
 - - - AREA TIE LINES
 - ◆ CALCULATED SECTON CORNER AS NOTED
 - ◆ SECTION CORNER AS NOTED
 - SET 5/8" X 2' REBAR WITH PLASTIC CAP
 - ▨ BUILDABLE AREA
 - ▩ EASEMENT

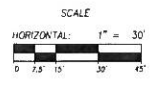
CURVE	LENGTH	RADIUS	LONG CHORD	LENGTH
C257	12.18'	283.00'	N 14°04'42" W	12.18'
C261	20.21'	283.00'	N 3°49'12" E	20.20'
C262	20.47'	283.00'	N 7°56'14" E	20.46'
C263	16.64'	283.00'	N 11°41'38" E	16.64'
C264	10.26'	283.00'	N 14°25'03" E	10.26'
C266	36.13'	23.00'	N 65°14'58" E	32.53'
C268	35.21'	182.00'	N 8°54'59" E	35.15'
C269	6.07'	182.00'	N 0°50'43" E	16.06'
C270	8.20'	182.00'	N 2°58'31" W	8.20'
C271	6.02'	218.00'	N 1°36'19" W	16.02'
C272	16.01'	151.67'	S 3°24'21" E	16.00'
C273	16.28'	82.00'	S 5°48'32" W	16.25'
C274	33.35'	82.00'	S 23°08'50" W	33.12'
C275	31.89'	20.00'	S 80°28'29" W	28.62'
C276	43.06'	82.00'	N 38°48'24" W	42.57'
C277	16.50'	82.00'	N 17°54'59" W	16.47'
C278	16.04'	108.82'	N 7°36'38" W	16.03'
C279	10.01'	345.68'	S 6°26'39" E	10.01'
C280	18.06'	343.00'	S 8°47'06" E	18.06'
C281	16.13'	343.00'	S 11°38'27" E	16.13'

CURVE	LENGTH	RADIUS	LONG CHORD	LENGTH
C287	18.05'	283.02'	N 0°29'10" W	18.05'
C288	34.12'	250.00'	S 49°56'25" E	34.09'
C289	137.86'	375.00'	S 17°5'53" E	136.83'
C290	68.18'	100.00'	S 15°15'58" W	66.87'
C291	85.58'	200.00'	S 7°59'29" W	84.93'
C292	63.62'	40.50'	S 65°14'58" W	57.28'
C299	66.54'	283.00'	S 8°35'44" E	66.19'
C300	16.03'	283.00'	N 17°04'42" E	16.02'
C301	16.03'	182.00'	S 16°50'54" W	16.03'
C302	2.36'	264.15'	S 20°14'58" W	2.36'
C738	84.02'	100.00'	N 29°46'51" W	81.57'
C770	25.03'	283.00'	S 48°33'54" E	25.02'
C771	25.03'	283.00'	S 43°29'49" E	25.02'

NO.	BY	DATE	REVISIONS:
1	TD	2013-09-17	PLAT NOTES & LEGAL DESCRIPTIONS

SUMMIT AT POWDER MOUNTAIN PHASE ID
LOTS 57-62, 87-115 AND PARCEL J

LOCATED IN SECTION 8 OF
TOWNSHIP 7 NORTH, RANGE 2 EAST, SALT LAKE
BASE AND MERIDIAN, WEBER COUNTY, UTAH



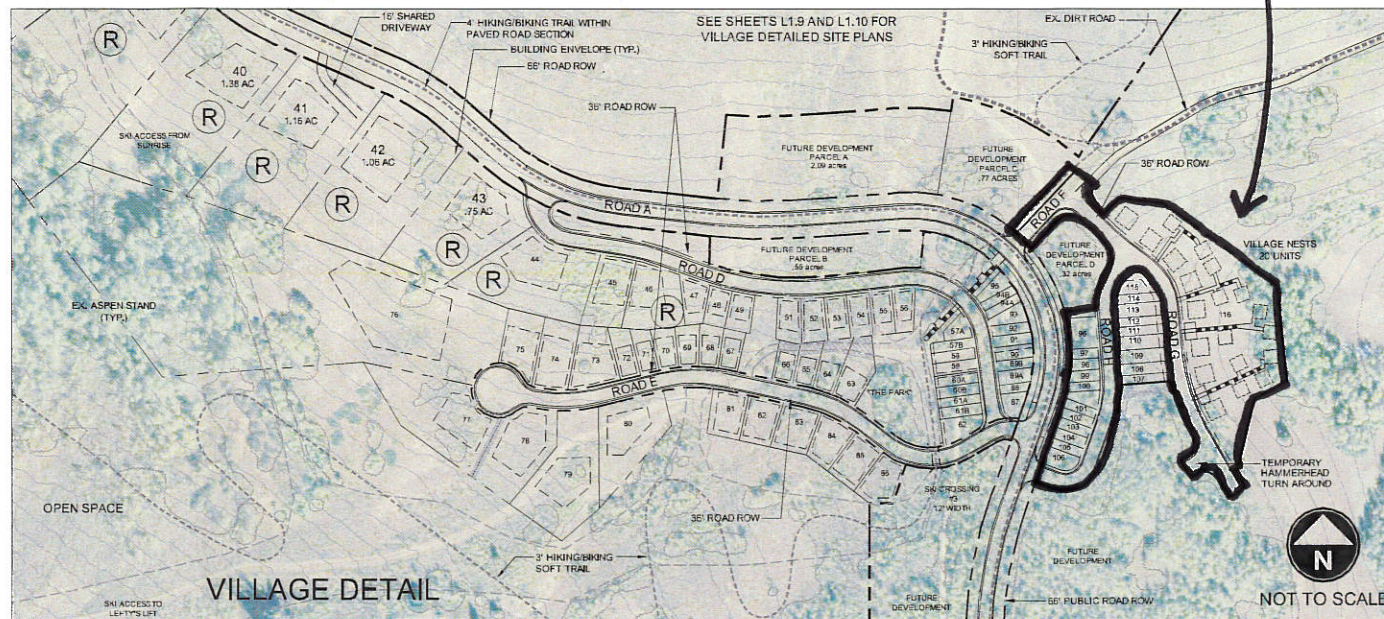
Sheet 2 of 2

NV5
NOLTE VERTICAL FIVE

RECORDED #
STATE OF UTAH, COUNTY OF WEBER,
RECORDED AND FILED AT THE
REQUEST OF:
ENTRY NO. _____
DATE: _____ TIME: _____
BOOK: _____ PAGE: _____
FEE \$ _____
WEBER COUNTY RECORDER



PRUD DEVELOPMENT DATA	
TOTAL PRUD BOUNDARY AREA	594.23 ACRES
ZONE FV-3 AREA	392.04 ACRES
ZONE F-40 AREA	194.83 ACRES
ZONE CVR-1 AREA	2.46 ACRES
CACHE COUNTY AREA	4.90 ACRES
ROAD ROW AREA	18.96 ACRES
SLOPES > 40%	111.85 ACRES
NET DEVELOPABLE AREA	463.42 ACRES
PROPOSED LOTS	116 LOTS
PROPOSED UNITS	154 UNITS
RANCH SINGLE FAMILY	6 UNITS
ESTATE SINGLE FAMILY	26 UNITS
CABIN SINGLE FAMILY	11 UNITS
HILLSIDE SINGLE FAMILY	36 UNITS
VILLAGE SINGLE FAMILY	17 UNITS
VILLAGE LIVE/WORK SF	23 UNITS
NESTS	35 UNITS
PROPOSED DENSITY	1 UNIT/3.85 ACRES
PROPOSED OPEN SPACE	384.19 ACRES (64.6%)



SUMMIT EDEN
PHASE 1 PRUD SUBMITTAL

POWDER MOUNTAIN, WEBER COUNTY, UTAH



DATE:	MAY 24, 2013
PROJECT:	000.0000.00
DRAWN BY:	EL
REVIEW BY:	EL
VERSION:	PRUD
REVISIONS:	
5/24/13 - LOT ADJUSTMENTS - PRUD	
REVISIONS	

SHEET TITLE:
OVERALL SITE PLAN

SHEET NUMBER:
L1.3